

Business Message Standard (BMS)

for

Align/GDSN/Party Synchronisation

BRG: Align

BMS Release: 2.0

Document Version: 2.0.1

Release Date: 31.12.2004

(dd.mm.cyyy)



Change Request Reference

Refer to Change Request (CR) Number(s):	02-000005
CR Submitter(s):	GCI GDS Group
Date of CR Submission to GSMP:	18.01.2002

Business Requirements Document (BRAD) Reference

BRAD Title: BRD Party Synchronisation Process Definition for Global Data Synchronisation Network – Business Requirements Document
BRAD Date: 28.10.2003
BRAD Version: 1.0

BRAD Title:
BRAD Date:
BRAD Version:

Document Summary

Document Title:	BMS For Align/GDSN/Party Synchronisation
Document Version	2.0.1
Owner:	Align BRG
Status:	(<i>Check one box</i>) <input type="checkbox"/> DRAFT <input checked="" type="checkbox"/> Approved
BMS Template Version:	1.0
Targeted BMS Publication Version	2.0

Document Change History

Note: During development include revisions in history. Upon Approval, eliminate revisions and include only delta from previous version.

Date of Change	Version	Changed By	Reason for Change	Summary of Change	Model Build #
31.12.2004	2.0.0	Bob Celeste	Initial Version in BMS/BSD template	Migration of BRD to standard BMS/BSD format	N/A
23.04.2007	2.0.1	Giovanni Biffi	Editorial Changes	Minor Editorial Changes to the Document	N/A

Business Message Standard

Table of contents

Chapter	Page
1 Business Solution	1
1.1 Business Domain View.....	1
1.1.1 Problem Statement / Business Need.....	1
1.1.2 Objective.....	1
1.1.3 Audience.....	2
1.1.4 Artefacts	2
1.1.5 References	2
1.1.6 Acknowledgements	3
1.1.6.1 BRG Members.....	3
1.1.6.2 ITRG Members	4
1.1.6.3 Task/Project Group Participants (<i>where applicable</i>)	4
1.1.6.4 Design Team Members	4
1.2 Business Context	5
1.3 Additional Technical Requirements Analysis	5
1.3.1 Technical Requirements (optional).....	5
1.4 Business Transaction View	6
1.4.1 Business Transaction Use Case Diagram.....	6
1.4.2 Use Case Description.....	6
1.4.3 Business Transaction Activity Diagram(s).....	7
1.4.4 Business Transaction Sequence Diagram(s) (optional)	7
1.5 Information Model (including GDD Report)	8
1.5.1 Data Description:	8
1.5.1.1 Party Confirmation.....	8
1.5.1.2 Party Notification	12
1.5.1.3 Party Publication.....	16
1.5.1.4 Party Registration	17
1.5.1.5 Party Registration Response.....	19
1.5.1.6 Party Subscription	21
1.5.1.7 Request For Party Notification.....	24
1.5.2 GDD Report :.....	26
1.5.2.1 Party Confirmation.....	26
1.5.2.2 Party Notification	28

Business Message Standard

Table of contents

1.5.2.3	Party Publication.....	32
1.5.2.4	Party Registration	34
1.5.2.5	Party Registration Response.....	38
1.5.2.6	Party Subscription	40
1.5.2.7	Request For Party Notification.....	43
1.5.3	Class Diagrams	45
1.5.3.1	Party Confirmation	45
1.5.3.2	Party Notification	45
1.5.3.3	Party Publication.....	46
1.5.3.4	Party Registration	47
1.5.3.5	Party Registration Response.....	48
1.5.3.6	Party Subscription	49
1.5.3.7	Request for Party Notification.....	51
1.5.4	Code Lists.....	52
1.6	Business Document Example	54
1.7	Implementation Considerations.....	54
1.8	Testing.....	54
1.8.1	Pass / Fail Criteria	54
1.8.2	Test Data	54
1.9	Appendices.....	55
1.10	Summary of Changes.....	55
2	XML Technical Solution ITRG Packet.....	56

1 Business Solution

1.1 Business Domain View

1.1.1 Problem Statement / Business Need

Substantial effort has been made to develop a Global Data Synchronisation process because master data sharing between partners is both complex and fundamental to all supply chain processes. Integrity and timeliness of master data is critical to the flow of goods, services and information throughout the chain. Sharing data effectively and efficiently relies on access to common data definitions, data accuracy and agreement on the processes used to exchange data. This process is termed Master Data Synchronisation.

The salient points for synchronisation are:

1. synchronisation is a process
2. it is auditable
3. the process must utilize EAN•UCC industry standards
4. the data exchanged must be compliant with these standards
5. the recipient must acknowledge the integration of the data
6. continuous updates must be applied

Party information is a part of Master Data. Trading Partner's involved with the Global Data Synchronisation Network (GDSN) require data regarding party (GLN) information to determine the unique identification, the role definition, the business process capability and the message capability required to function in the network defined to achieve Master Data Synchronisation.

The process requirements for synchronisation of Party information within the Global Data Synchronisation Network should include:

- Manage a Data Pool Profile
- Load and Update Party Data within a Data Pool
- Load and Update Party Data within the Global Registry
- Manage Party Data in the Global Registry
- Manage Party Distribution Criteria
- Distribute Data Recipient Requests
- Distribute Party Data

The data requirements for synchronisation of Party information within the Global Data Synchronisation Network should include:

- The attributes defined in the most current version of the Party data model defined through EAN.UCC's GSMP
- GLN as mandatory choice for Party Identification
- At least one role of Party as mandatory, allowing additional roles
- At least one Business Process identification and one Message Identification used to define the capability of the party
- Subscription criteria available by:
 - GLN
 - Role
 - Process Capability
 - Trade Item Classification

1.1.2 Objective

To supply the detail design of a Global Data Synchronisation Network business transaction needed to meet the requirements of the referenced BRAD(s).

Business Solution Design

1.1.3 Audience

The audience of this standard is any participant in the global supply chain. This includes retailers, manufacturers, service providers and other third parties.

1.1.4 Artefacts

(List of the artefacts that are used as either an input to the process or an output from the process, also indicating the different states that the artefact takes during the process.)

Artefact name	State	Artefact / State description

1.1.5 References

Reference Name	Description
Party Synchronisation Process Definition For Global Data Synchronisation Network, Version 1.0, October 28, 2003	
EAN•UCC Business Message Standard for Trade Item	
EAN•UCC Business Message Standard for Party	
EAN•UCC Business Message Standard for Catalogue Item Synchronisation	
The Unified Modeling Language User Guide, Booch, Rumbaugh and Jacobson, Addison-Wesley Longman, Inc. Copyright 1999. ISBN 0-201-57168-4	
EAN•UCC Global General Specifications	

1.1.6 Acknowledgements

1.1.6.1 BRG Members

Function	Name	Company / organisation
BRG Chair	Mike Merulla	Wegmans
BRG Member	Bigler, Lori	JM Smucker
BRG Member	Boncore, Marianne	Pepsi
BRG Member	Boortman, Loek	EAN Nederlands
BRG Member	Fassberg, Rob	QRS
BRG Member	Funk, Jim	SC Johnson
BRG Member	Geyer, Terrie	Sears
BRG Member	Goldman, Brad	WWRE
BRG Member	Goodrich, Maryann	Unilever
BRG Member	Hansen, Vic	Unilever
BRG Member	Harris, Mike	Vialink
BRG Member	Hawkins, Bruce	Walmart
BRG Member	Kao, Judy	SAP
BRG Member	Kille, Grant	WWRE
BRG Member	Licul, Ed	Transora
BRG Member	Lockhead, Sean	UCCnet
BRG Member	Mathar, Markus	Sinfos
BRG Member	Merulla, Mike	Wegmans
BRG Member	Miller, Jodi	LandOLakes
BRG Member	Moody, Doug	Frito Lay
BRG Member	Morgan, Gena	ISS
BRG Member	Munro, Barb	Kraft
BRG Member	Nemirovsky, Mike	Campbell Soup
BRG Member	Pickett, Becky	Ahold
BRG Member	Saputra, Budi	P&G
BRG Member	Schneck, Joy	General Mills
BRG Member	Sheehan, Jim	Shaw's
BRG Member	Spooner, Karen	Kraft Foods
BRG Member	Walton, Mike	UDEX
BRG Member	Zwanziger, Greg	SuperValu

1.1.6.2 ITRG Members

Function	Name	Company / organisation
ITRG Chair		
ITRG Member		
ITRG Member		
ITRG Member		
...		

1.1.6.3 Task/Project Group Participants (*where applicable*)

Function	Name	Company / organisation
Participant	Bonito, Maureen	ISI, Mars Inc.
Participant	Buckley, Greg	Pepsi
Participant	Denning, John	UDEX
Participant	Grove, Jeff	LandOLakes
Participant	Marr, Kevin	IBM
Participant	Panaccio, Bob	P&G
Participant	Sadiwnyk, Mike	ECCC
Participant	White, Don	Commerce One
Participant	Zelinski, Felix	Coke

1.1.6.4 Design Team Members

Function	Name	Organisation
Modeller	Celeste, Bob	Uniform Code Council
XML Technical Designer		
EANCOM Technical Designer		
Peer Reviewer	Kramer, Regenal	EAN Brussels

Business Solution Design

1.2 Business Context

(Note: The business context of the business)

Context Category	Value(s)
Industry	All
Geopolitical	All
Product	All
Process	All
System Capabilities	All
Official Constraints	None

1.3 Additional Technical Requirements Analysis

1.3.1 Technical Requirements (optional)

(User Interface, Security, Performance, Quality, etc.)

Number	Statement	Rationale

1.4 Business Transaction View

The initial Party Data Synchronisation solution is to synchronise party (GLN) information for the process of item and party synchronisation, and build a framework to allow for future maturity levels.

1.4.1 Business Transaction Use Case Diagram

1.4.2 Use Case Description

See BRD Party Synchronisation Process Definition for Global Data Synchronisation Network – Business Requirements Document for Use Case Details

1.4.3 Business Transaction Activity Diagram(s)

See BRD Party Synchronisation Process Definition for Global Data Synchronisation Network – Business Requirements Document for Use Case Details

1.4.4 Business Transaction Sequence Diagram(s) (optional)

See BRD Party Synchronisation Process Definition for Global Data Synchronisation Network – Business Requirements Document for Use Case Details

Business Solution Design

1.5 Information Model (including GDD Report)

1.5.1 Data Description:

1.5.1.1 Party Confirmation

CLASS (ABIE)	ATTRIBUTE (BBIE)	ASSOCIATION (ASBIE)	SECONDARY CLASS	RELATED REQUIREMENT
PartyCapability				
	lastChangeDate			BRD Party Synchronisation Process Definition for Global Data Synchronisa- tion Network Version 1.0
		None	CatalogueItemClassification	BRD Party Synchronisation Process Definition for Global Data Synchronisa- tion Network Version 1.0
		None	IndustrySector	BRD Party Synchronisation Process Definition for Global Data Synchronisa- tion Network Version 1.0
		None	PartyMessageCapability	BRD Party Synchronisation Process Definition for Global Data Synchronisa- tion Network Version 1.0

Business Solution Design

CLASS (ABIE)	ATTRIBUTE (BBIE)	ASSOCIATION (ASBIE)	SECONDARY CLASS	RELATED REQUIREMENT
		None	PartyProcessCapability	BRD Party Synchronisation Process Definition for Global Data Synchronisa- tion Network Version 1.0
PartyConfirmation				
	confirmedPartyGLN			BRD Party Synchronisation Process Definition for Global Data Synchronisa- tion Network Version 1.0
	dataRecipient			BRD Party Synchronisation Process Definition for Global Data Synchronisa- tion Network Version 1.0
	dataSource			BRD Party Synchronisation Process Definition for Global Data Synchronisa- tion Network Version 1.0
		None	Document	BRD Party Synchronisation Process Definition for Global Data Synchronisa- tion Network Version 1.0

Business Solution Design

CLASS (ABIE)	ATTRIBUTE (BBIE)	ASSOCIATION (ASBIE)	SECONDARY CLASS	RELATED REQUIREMENT
		partyConfirmationIdentification	EntityIdentification	BRD Party Synchronisation Process Definition for Global Data Synchronisa- tion Network Version 1.0
		None	PartyCapability	BRD Party Synchronisation Process Definition for Global Data Synchronisa- tion Network Version 1.0
		None	PartyConfirmationState	BRD Party Synchronisation Process Definition for Global Data Synchronisa- tion Network Version 1.0
		None	PartyRoleSubscription	BRD Party Synchronisation Process Definition for Global Data Synchronisa- tion Network Version 1.0
PartyConfirmationState				
	state			BRD Party Synchronisation Process Definition for Global Data Synchronisa- tion Network Version 1.0
PartyRoleSubscription				

Business Solution Design

CLASS (ABIE)	ATTRIBUTE (BBIE)	ASSOCIATION (ASBIE)	SECONDARY CLASS	RELATED REQUIREMENT
	partyRole			BRD Party Synchronisation Process Definition for Global Data Synchronisa- tion Network Version 1.0

Business Solution Design

1.5.1.2 Party Notification

CLASS (ABIE)	ATTRIBUTE (BBIE)	ASSOCIATION (ASBIE)	SECONDARY CLASS	RELATED REQUIREMENT
PartyCapability				
	lastChangeDate			BRD Party Synchronisation Process Definition for Global Data Synchronisation Network Version 1.0
				BRD Party Synchronisation Process Definition for Global Data Synchronisation Network Version 1.0
		None	CatalogueItemClassification	BRD Party Synchronisation Process Definition for Global Data Synchronisation Network Version 1.0
		None	IndustrySector	BRD Party Synchronisation Process Definition for Global Data Synchronisation Network Version 1.0
		None	PartyMessageCapability	BRD Party Synchronisation Process Definition for Global Data Synchronisation Network Version 1.0

Business Solution Design

CLASS (ABIE)	ATTRIBUTE (BBIE)	ASSOCIATION (ASBIE)	SECONDARY CLASS	RELATED REQUIREMENT
		None	PartyProcessCapability	BRD Party Synchronisation Process Definition forGlobal Data Synchronisation NetworkVersion 1.0
PartyNotification				
	corporateEntityGLN			BRD Party Synchronisation Process Definition forGlobal Data Synchronisation NetworkVersion 1.0
	dataRecipient			BRD Party Synchronisation Process Definition forGlobal Data Synchronisation NetworkVersion 1.0
	isReload			BRD Party Synchronisation Process Definition forGlobal Data Synchronisation NetworkVersion 1.0
	sourceDataPool			BRD Party Synchronisation Process Definition forGlobal Data Synchronisation NetworkVersion 1.0

Business Solution Design

CLASS (ABIE)	ATTRIBUTE (BBIE)	ASSOCIATION (ASBIE)	SECONDARY CLASS	RELATED REQUIREMENT
		None	Document	BRD Party Synchronisation Process Definition for Global Data Synchronisation Network Version 1.0
		partyNotificationIdentification	EntityIdentification	BRD Party Synchronisation Process Definition for Global Data Synchronisation Network Version 1.0
		None	Party	BRD Party Synchronisation Process Definition for Global Data Synchronisation Network Version 1.0
		None	PartyCapability	BRD Party Synchronisation Process Definition for Global Data Synchronisation Network Version 1.0
		None	PartyNotificationState	BRD Party Synchronisation Process Definition for Global Data Synchronisation Network Version 1.0
PartyNotificationState				

Business Solution Design

CLASS (ABIE)	ATTRIBUTE (BBIE)	ASSOCIATION (ASBIE)	SECONDARY CLASS	RELATED REQUIREMENT
	discontinueDate			BRD Party Synchronisation Process Definition for Global Data Synchronisation Network Version 1.0
	state			BRD Party Synchronisation Process Definition for Global Data Synchronisation Network Version 1.0

Business Solution Design

1.5.1.3 Party Publication

CLASS (ABIE)	ATTRIBUTE (BBIE)	ASSOCIATION (ASBIE)	SECONDARY CLASS	RELATED REQUIREMENT
PartyPublication				
	availableDate			BRD Party Synchronisation Process Definition forGlobal Data Synchronisation Network Version 1.0
	gLNToPublish			BRD Party Synchronisation Process Definition forGlobal Data Synchronisation Network Version 1.0
	isAvailableToPublic			BRD Party Synchronisation Process Definition forGlobal Data Synchronisation Network Version 1.0
	publishToGLN			
		None	Document	BRD Party Synchronisation Process Definition forGlobal Data Synchronisation Network Version 1.0
		partyPublicationIdentification	EntityIdentification	BRD Party Synchronisation Process Definition forGlobal Data Synchronisation Network Version 1.0

Business Solution Design

1.5.1.4 Party Registration

CLASS (ABIE)	ATTRIBUTE (BBIE)	ASSOCIATION (ASBIE)	SECONDARY CLASS	RELATED REQUIREMENT
PartyRegistration				
	corporateldentityGLN			BRD Party Synchronisation Process Definition for Global Data Synchronisation Network Version 1.0
	sourceDataPool			
		None	Document	BRD Party Synchronisation Process Definition for Global Data Synchronisation Network Version 1.0
		partyRegistrationIdentification	EntityIdentification	BRD Party Synchronisation Process Definition for Global Data Synchronisation Network Version 1.0
		None	Party	BRD Party Synchronisation Process Definition for Global Data Synchronisation Network Version 1.0
		None	PartyCapability	BRD Party Synchronisation Process Definition for Global Data Synchronisation Network Version 1.0

Business Solution Design

CLASS (ABIE)	ATTRIBUTE (BBIE)	ASSOCIATION (ASBIE)	SECONDARY CLASS	RELATED REQUIREMENT
		None	PartyRegistrationDates	BRD Party Synchronisation Process Definition forGlobal Data Synchronisation NetworkVersion 1.0
		None	RegistryPartyState	BRD Party Synchronisation Process Definition forGlobal Data Synchronisation NetworkVersion 1.0
PartyRegistrationDates				
	canceledDate			BRD Party Synchronisation Process Definition forGlobal Data Synchronisation NetworkVersion 1.0
	deletionDate			BRD Party Synchronisation Process Definition forGlobal Data Synchronisation NetworkVersion 1.0
	discontinuedDate			BRD Party Synchronisation Process Definition forGlobal Data Synchronisation NetworkVersion 1.0
	lastChangedDate			BRD Party Synchronisation Process Definition forGlobal Data Synchronisation NetworkVersion 1.0
RegistryPartyState				

Business Solution Design

CLASS (ABIE)	ATTRIBUTE (BBIE)	ASSOCIATION (ASBIE)	SECONDARY CLASS	RELATED REQUIREMENT
	state			BRD Party Synchronisation Process Definition for Global Data Synchronisation Network Version 1.0

1.5.1.5 Party Registration Response

CLASS (ABIE)	ATTRIBUTE (BBIE)	ASSOCIATION (ASBIE)	SECONDARY CLASS	RELATED REQUIREMENT
PartyRegistrationInformation				
	lastChangedDate			BRD Party Synchronisation Process Definition for Global Data Synchronisation Network Version 1.0
	registrationDate			BRD Party Synchronisation Process Definition for Global Data Synchronisation Network Version 1.0
	removedDate			BRD Party Synchronisation Process Definition for Global Data Synchronisation Network Version 1.0

Business Solution Design

CLASS (ABIE)	ATTRIBUTE (BBIE)	ASSOCIATION (ASBIE)	SECONDARY CLASS	RELATED REQUIREMENT
	None			BRD Party Synchronisation Process Definition for Global Data Synchronisation Network Version 1.0
PartyRegistrationResponse				
	partyReference			BRD Party Synchronisation Process Definition for Global Data Synchronisation Network Version 1.0
		None	PartyRegistrationInformation	BRD Party Synchronisation Process Definition for Global Data Synchronisation Network Version 1.0
		None	Response	BRD Party Synchronisation Process Definition for Global Data Synchronisation Network Version 1.0

Business Solution Design

1.5.1.6 Party Subscription

CLASS (ABIE)	ATTRIBUTE (BBIE)	ASSOCIATION (ASBIE)	SECONDARY CLASS	RELATED REQUIREMENT
PartyCapability				
	lastChangeDate			BRD Party Synchronisation Process Definition for Global Data Synchronisation Network Version 1.0
		None	CatalogueItemClassification	BRD Party Synchronisation Process Definition for Global Data Synchronisation Network Version 1.0
		None	IndustrySector	BRD Party Synchronisation Process Definition for Global Data Synchronisation Network Version 1.0
		None	PartyMessageCapability	BRD Party Synchronisation Process Definition for Global Data Synchronisation Network Version 1.0
		None	PartyProcessCapability	BRD Party Synchronisation Process Definition for Global Data Synchronisation Network Version 1.0
PartyRoleSubscription				

Business Solution Design

CLASS (ABIE)	ATTRIBUTE (BBIE)	ASSOCIATION (ASBIE)	SECONDARY CLASS	RELATED REQUIREMENT
	partyRole			BRD Party Synchronisation Process Definition for Global Data Synchronisation Network Version 1.0
PartySubscription				
	dataRecipient			BRD Party Synchronisation Process Definition for Global Data Synchronisation Network Version 1.0
	subscribeToGLN			BRD Party Synchronisation Process Definition for Global Data Synchronisation Network Version 1.0
	recipientDataPool			BRD Party Synchronisation Process Definition for Global Data Synchronisation Network Version 1.0
		None	Document	BRD Party Synchronisation Process Definition for Global Data Synchronisation Network Version 1.0
		partySubscriptionIdentification	EntityIdentification	BRD Party Synchronisation Process Definition for Global Data Synchronisation Network Version 1.0

Business Solution Design

CLASS (ABIE)	ATTRIBUTE (BBIE)	ASSOCIATION (ASBIE)	SECONDARY CLASS	RELATED REQUIREMENT
		None	PartyCapability	BRD Party Synchronisation Process Definition for Global Data Synchronisation Network Version 1.0
		partyRoleSubscribedTo	PartyRoleSubscription	BRD Party Synchronisation Process Definition for Global Data Synchronisation Network Version 1.0

Business Solution Design

1.5.1.7 Request For Party Notification

CLASS (ABIE)	ATTRIBUTE (BBIE)	ASSOCIATION (ASBIE)	SECONDARY CLASS	RELATED REQUIREMENT
PartySubscription				
	dataRecipient			BRD Party Synchronisation Process Definition for Global Data Synchronisation Network Version 1.0
	subscribeToGLN			BRD Party Synchronisation Process Definition for Global Data Synchronisation Network Version 1.0
	recipientDataPool			BRD Party Synchronisation Process Definition for Global Data Synchronisation Network Version 1.0
		None	Document	BRD Party Synchronisation Process Definition for Global Data Synchronisation Network Version 1.0
		partySubscriptionIdentification	EntityIdentification	BRD Party Synchronisation Process Definition for Global Data Synchronisation Network Version 1.0
		None	PartyCapability	BRD Party Synchronisation Process Definition for Global Data Synchronisation Network Version 1.0

Business Solution Design

CLASS (ABIE)	ATTRIBUTE (BBIE)	ASSOCIATION (ASBIE)	SECONDARY CLASS	RELATED REQUIREMENT
		partyRoleSubscribedTo	PartyRoleSubscription	BRD Party Synchronisation Process Definition for Global Data Synchronisation Network Version 1.0
RequestForPartyNotification				
	isReload			BRD Party Synchronisation Process Definition for Global Data Synchronisation Network Version 1.0
		None	PartySubscription	BRD Party Synchronisation Process Definition for Global Data Synchronisation Network Version 1.0

Business Solution Design

1.5.2 GDD Report :

1.5.2.1 Party Confirmation

CLASS (ABIE)	ATTRIBUTE (BBIE)	ASSOCIATION (ASBIE)	SECONDARY CLASS	Official Dictionary Entry Name	Definition	Multiplicity
Document				Electronic_ Document. De- tails	Used to specify basic information about the content of the mes- sage including version number, creation date and time.	
	contentVersion			Electronic_ Document. Con- tent_ Version. Identifier	Not defined in BRD	0..1
	creationDateTime			Electronic_ Document. Crea- tion_ Date. Date Time	Not defined in BRD	1..1
	documentStatus			Electronic_ Document. Status. Identifier	Indicates if the docu- ment is a copy or an original.	1..1
	documentStructureVer- sion			Electronic_ Document. Document Structure_ Ver- sion. Identifier	Not defined in BRD	0..1
	lastUpdateDate			Electronic_ Document. Last Update_ Date. Date Time	Not defined in BRD	0..1
EntityIdentification				Entity Identification. Details	The unique identifica- tion of a document.	
	uniqueCreatorIdentifica-			Entity Identification. Identi-	N/A	1..1

Business Solution Design

CLASS (ABIE)	ATTRIBUTE (BBIE)	ASSOCIATION (ASBIE)	SECONDARY CLASS	Official Dictionary Entry Name	Definition	Multiplicity
	tion			fication. Identifier		
		contentOwner	PartyIdentification	Entity Identification. Content Owner. Party Identification	None	1..1
PartyCapability				Party Capability. Details	None	
	lastChangeDate			Party Capability. Last Change_ Date. Date_ Date Time		1..1
		None	CatalogueItemClassification	Party Capability. Association. GPC_ Product Classification	None	0..*
		None	IndustrySector	Party Capability. Association. Industry Sector	None	0..*
		None	PartyMessageCapability	Party Capability. Association. Party Message Capability	None	0..*
		None	PartyProcessCapability	Party Capability. Association. Party Process Capability	None	0..*
PartyConfirmation				Party Confirmation. Details	None	
	confirmedPartyGLN			Party Confirmation. Confirmed_ Party. GLN_ Identifier		1..1
	dataRecipient			Party Confirmation. Data Recipient_ Party. GLN_ Identifier		1..1

Business Solution Design

CLASS (ABIE)	ATTRIBUTE (BBIE)	ASSOCIATION (ASBIE)	SECONDARY CLASS	Official Dictionary Entry Name	Definition	Multiplicity
	dataSource			Party Confirmation. Data Source_ Party. GLN_ Identifier		0..1
		None	Document	Party Confirmation. Inheritance_ Association. Electronic_ Document	None	1..1
		partyConfirmationIdentification	EntityIdentification	Party Confirmation. Identification. Entity Identification	None	1..1
		None	PartyCapability	Party Confirmation. Association. Party Capability	None	0..*
		None	PartyConfirmationState	Party Confirmation. Association. Party Confirmation State	None	1..1
		None	PartyRoleSubscription	Party Confirmation. Association. Party Role Subscription	None	0..*
PartyConfirmation-State				Party Confirmation State. Details	None	
	state			Party Confirmation State. State. Party Confirmation State_ Code		1..1
PartyRoleSubscription				Party Role Subscription. Details	None	
	partyRole			Party Role Subscription. Party Role. Party Role Type_ Code		1..1

End of Report

1.5.2.2 Party Notification

Business Solution Design

CLASS (ABIE)	ATTRIBUTE (BBIE)	ASSOCIATION (ASBIE)	SECONDARY CLASS	Official Dictionary Entry Name	Definition	Multiplicity
Document				Electronic_ Document. De- tails	Used to specify basic information about the content of the message including version num- ber, creation date and time.	
	contentVersion			Electronic_ Document. Con- tent_ Version. Identifier	Not defined in BRD	0..1
	creationDateTime			Electronic_ Document. Crea- tion_ Date. Date Time	Not defined in BRD	1..1
	documentStatus			Electronic_ Document. Status. Identifier	Indicates if the docu- ment is a copy or an original.	1..1
	documentStructureVer- sion			Electronic_ Document. Document Structure_ Ver- sion. Identifier	Not defined in BRD	0..1
	lastUpdateDate			Electronic_ Document. Last Update_ Date. Date Time	Not defined in BRD	0..1
EntityIdentification				Entity Identification. Details	The unique identifica- tion of a document.	
	uniqueCreatorIdentifica- tion			Entity Identification. Identifi- cation. Identifier	N/A	1..1

Business Solution Design

CLASS (ABIE)	ATTRIBUTE (BBIE)	ASSOCIATION (ASBIE)	SECONDARY CLASS	Official Dictionary Entry Name	Definition	Multiplicity
		contentOwner	PartyIdentification	Entity Identification. Content Owner. Party Identification	None	1..1
Party				Party. Details	n.a.	
		None	PartyContainment	Party. Association. Party Containment	None	0..1
		None	PartyIdentification	Party. Association. Party Identification	None	1..1
		informationProviderOf-Party	PartyIdentification	Party. Information Provider. Party Identification	None	0..1
		None	PartyInformation	Party. Association. Party Information Group	None	1..1
PartyCapability				Party Capability. Details	None	
	lastChangeDate			Party Capability. Last Change_ Date. Date_ Date Time		1..1
		None	CatalogueItemClassification	Party Capability. Association. GPC Product Classification	None	0..*
		None	IndustrySector	Party Capability. Association. Industry Sector	None	0..*
		None	PartyMessageCapability	Party Capability. Association. Party Message Capability	None	0..*
		None	PartyProcessCapability	Party Capability. Association. Party Process Capability	None	0..*
PartyNotification				Party Notification. Details	None	
	corporateEntityGLN			Party Notification. Corporate Entity Party. GLN Identifier		1..1

Business Solution Design

CLASS (ABIE)	ATTRIBUTE (BBIE)	ASSOCIATION (ASBIE)	SECONDARY CLASS	Official Dictionary Entry Name	Definition	Multiplicity
	dataRecipient			Party Notification. Data Recipient_ Party. GLN_ Identifier		0..1
	isReload			Party Notification. Reload. Indicator		1..1
	sourceDataPool			Party Notification. Source Data Pool_ Party. GLN_ Identifier		1..1
		None	Document	Party Notification. Inheritance_ Association. Electronic_ Document	None	1..1
		partyNotificationIdentification	EntityIdentification	Party Notification. Identification. Entity Identification	None	1..1
		None	Party	Party Notification. Association. Party	None	1..1
		None	PartyCapability	Party Notification. Association. Party Capability	None	1..*
		None	PartyNotificationState	Party Notification. Association. Party Notification State	None	1..1
PartyNotification-State				Party Notification State. Details	None	
	discontinueDate			Party Notification State. Discontinued_ Date Time. Date Time		0..1
	state			Party Notification State. State. Party State_ Code		1..1

Business Solution Design

1.5.2.3 Party Publication

CLASS (ABIE)	ATTRIBUTE (BBIE)	ASSOCIATION (ASBIE)	SECONDARY CLASS	Official Dictionary Entry Name	Definition	Multiplicity
Document				Electronic_ Document. Details	Used to specify basic information about the content of the message including version number, creation date and time.	
	contentVersion			Electronic_ Document. Content_ Version. Identifier	Not defined in BRD	0..1
	creationDateTime			Electronic_ Document. Creation_ Date. Date Time	Not defined in BRD	1..1
	documentStatus			Electronic_ Document. Status. Identifier	Indicates if the document is a copy or an original.	1..1
	documentStructureVersion			Electronic_ Document. Document Structure_ Version. Identifier	Not defined in BRD	0..1
	lastUpdateDate			Electronic_ Document. Last Update_ Date. Date Time	Not defined in BRD	0..1

Business Solution Design

CLASS (ABIE)	ATTRIBUTE (BBIE)	ASSOCIATION (ASBIE)	SECONDARY CLASS	Official Dictionary Entry Name	Definition	Multiplicity
EntityIdentification				Entity Identification. Details	The unique identification of a document.	
	uniqueCreatorIdentification			Entity Identification. Identification. Identifier	N/A	1..1
		contentOwner	PartyIdentification	Entity Identification. Content Owner. Party Identification	None	1..1
PartyPublication				Party Publication. Details	None	
	availableDate			Party Publication. Available_ Date. Date_ Date Time	N/A	1..1
	gLNToPublish			Party Publication. Published_ Party. GLN_ Identifier	N/A	1..*
	isAvailableToPublic			Party Publication. Available To Public_ Indicator. Indicator	N/A	1..1
	publishToGLN			Party Publication. Publish To_ Party. GLN_ Identifier	N/A	0..*
		None	Document	Party Publication. Inheritance_ Association. Electronic_ Document	None	1..1
		partyPublicationIdentification	EntityIdentification	Party Publication. Identification. Entity Identification	None	1..1

Business Solution Design

1.5.2.4 Party Registration

CLASS (ABIE)	ATTRIBUTE (BBIE)	ASSOCIATION (ASBIE)	SECONDARY CLASS	Official Dictionary Entry Name	Definition	Multiplicity
Document				Electronic_ Document. Details	Used to specify basic information about the content of the message including version number, creation date and time.	
	contentVersion			Electronic_ Document. Content_ Version. Identifier	Not defined in BRD	0..1
	creationDateTime			Electronic_ Document. Creation_ Date. Date Time	Not defined in BRD	1..1
	documentStatus			Electronic_ Document. Status. Identifier	Indicates if the document is a copy or an original.	1..1
	documentStructureVersion			Electronic_ Document. Document Structure_ Version. Identifier	Not defined in BRD	0..1
	lastUpdateDate			Electronic_ Document. Last Update_ Date. Date Time	Not defined in BRD	0..1
EntityIdentification				Entity Identification. Details	The unique identification of a document.	
	uniqueCreatorIdentification			Entity Identification. Identification. Identifier	N/A	1..1
		contentOwner	PartyIdentification	Entity Identification. Content Owner. Party Identification	None	1..1

Business Solution Design

CLASS (ABIE)	ATTRIBUTE (BBIE)	ASSOCIATION (ASBIE)	SECONDARY CLASS	Official Dictionary Entry Name	Definition	Multiplicity
Party				Party. Details	n.a.	
		None	PartyContainment	Party. Association. Party Containment	None	0..1
		None	PartyIdentification	Party. Association. Party Identification	None	1..1
		informationProviderOfParty	PartyIdentification	Party. Information Provider. Party Identification	None	0..1
		None	PartyInformation	Party. Association. Party Information Group	None	1..1
PartyCapability				Party Capability. Details	None	
	lastChangeDate			Party Capability. Last Change_ Date. Date_ Date Time		1..1
		None	CatalogueItemClassification	Party Capability. Association. GPC_ Product Classification	None	0..*
		None	IndustrySector	Party Capability. Association. Industry Sector	None	0..*
		None	PartyMessageCapability	Party Capability. Association. Party Message Capability	None	0..*
		None	PartyProcessCapability	Party Capability. Association. Party Process Capability	None	0..*
PartyRegistration				Party Registration. Details	None	
	corporateIdentityGLN			Party Registration. Corporate Identity_ Party.		1..1

Business Solution Design

CLASS (ABIE)	ATTRIBUTE (BBIE)	ASSOCIATION (ASBIE)	SECONDARY CLASS	Official Dictionary Entry Name	Definition	Multiplicity
				GLN_ Identifier		
	sourceDataPool			Party Registration. Source Data Pool_ Party. GLN_ Identifier		1..1
		None	Document	Party Registration. Inheritance_ Association. Electronic_ Document	None	1..1
		partyRegistrationIdentification	EntityIdentification	Party Registration. Identification. Entity Identification	None	1..1
		None	Party	Party Registration. Association. Party	None	1..1
		None	PartyCapability	Party Registration. Association. Party Capability	None	1..*
		None	PartyRegistrationDates	Party Registration. Association. Party Registration_ Date Group	None	0..1
		None	RegistryPartyState	Party Registration. Association. Registry Party State	None	1..1
PartyRegistration-Dates				Party Registration_ Date Group. Details	None	
	canceledDate			Party Registration_ Date Group. Cancelled_ Date Time. Date_ Date Time		0..1
	deletionDate			Party Registration_ Date Group. Deletion_ Date Time. Date_ Date Time		0..1
	discontinuedDate			Party Registration_ Date		0..1

Business Solution Design

CLASS (ABIE)	ATTRIBUTE (BBIE)	ASSOCIATION (ASBIE)	SECONDARY CLASS	Official Dictionary Entry Name	Definition	Multiplicity
				Group. Discontinued_ Date Time. Date_ Date Time		
	lastChangedDate			Party Registration_ Date Group. Last Changed_ Date Time. Date_ Date Time		0..1
RegistryPartyState				Registry Party State. Details	None	
	state			Registry Party State. State. Registry Party State_ Code		1..1

Business Solution Design

1.5.2.5 Party Registration Response

CLASS (ABIE)	ATTRIBUTE (BBIE)	ASSOCIATION (ASBIE)	SECONDARY CLASS	Official Dictionary Entry Name	Definition	Multiplicity
PartyRegistrationInformation				Party Registration Response_ Date Group. Details	None	
	lastChangedDate			Party Registration Response_ Date Group. Last Changed_ Date Time. Date_ Date Time		1..1
	registrationDate			Party Registration Response_ Date Group. Registration_ Date Time. Date_ Date Time		1..1
	removedDate			Party Registration Response_ Date Group. Removed_ Date Time. Date_ Date Time		0..1
	None			Party Registration Response_ Date Group. Date Time. Date Time		0..*
PartyRegistrationResponse				Party Registration Response. Details	None	
	partyReference			Party Registration Response. Reference_ Party. GLN_ Identifier		1..1
		None	PartyRegistrationInformation	Party Registration Response. Association. Party Registration Response_ Date Group	None	1..1
		None	Response	Party Registration Response. Inheritance_ Association. Response	None	1..1

Business Solution Design

CLASS (ABIE)	ATTRIBUTE (BBIE)	ASSOCIATION (ASBIE)	SECONDARY CLASS	Official Dictionary Entry Name	Definition	Multiplicity
Response				Response. Details	n.a.	
	responseStatus			Response. Status. Response Status_ Code	N/A	1..1
	responseStatus			Response. Response_ Status. Response Status_ Code	N/A	1..1
		responseIdentification	EntityIdentification	Response. Identification. Entity Identification	None	1..1

Business Solution Design

1.5.2.6 Party Subscription

CLASS (ABIE)	ATTRIBUTE (BBIE)	ASSOCIATION (ASBIE)	SECONDARY CLASS	Official Dictionary Entry Name	Definition	Multiplicity
Document				Electronic_ Document. Details	Used to specify basic information about the content of the message including version number, creation date and time.	
	contentVersion			Electronic_ Document. Content_ Version. Identifier	Not defined in BRD	0..1
	creationDateTime			Electronic_ Document. Creation_ Date. Date Time	Not defined in BRD	1..1
	documentStatus			Electronic_ Document. Status. Identifier	Indicates if the document is a copy or an original.	1..1
	documentStructureVersion			Electronic_ Document. Document Structure_ Version. Identifier	Not defined in BRD	0..1
	lastUpdateDate			Electronic_ Document. Last Update_ Date. Date Time	Not defined in BRD	0..1

Business Solution Design

CLASS (ABIE)	ATTRIBUTE (BBIE)	ASSOCIATION (ASBIE)	SECONDARY CLASS	Official Dictionary Entry Name	Definition	Multiplicity
EntityIdentification				Entity Identification. Details	The unique identification of a document.	
	uniqueCreatorIdentification			Entity Identification. Identification. Identifier	None	1..1
		contentOwner	PartyIdentification	Entity Identification. Content Owner. Party Identification	None	1..1
PartyCapability				Party Capability. Details	None	
	lastChangeDate			Party Capability. Last Change_ Date. Date_ Date Time		1..1
		None	CatalogueItemClassification	Party Capability. Association. GPC_ Product Classification	None	0..*
		None	IndustrySector	Party Capability. Association. Industry Sector	None	0..*
		None	PartyMessageCapability	Party Capability. Association. Party Message Capability	None	0..*
		None	PartyProcessCapability	Party Capability. Association. Party Process Capability	None	0..*
PartyRoleSubscription				Party Role Subscription. Details	None	

Business Solution Design

CLASS (ABIE)	ATTRIBUTE (BBIE)	ASSOCIATION (ASBIE)	SECONDARY CLASS	Official Dictionary Entry Name	Definition	Multiplicity
	partyRole			Party Role Subscription. Party Role. Party Role Type_ Code	None	1..1
PartySubscription				Party Subscription. Details	None	
	dataRecipient			Party Subscription. Data Recipient_ Party. GLN_ Identifier	None	1..1
	subscribeToGLN			Party Subscription. Subscribe To_ Party. GLN_ Identifier	None	1..1
	recipientDataPool			Party Subscription. Recipient Data Pool_ Party. GLN_ Identifier	None	1..1
		None	Document	Party Subscription. Inheritance_ Association. Electronic_ Document	None	1..1
		partySubscriptionIdentification	EntityIdentification	Party Subscription. Identification. Entity Identification	None	1..1
		None	PartyCapability	Party Subscription. Association. Party Capability	None	0..*
		partyRoleSubscribedTo	PartyRoleSubscription	Party Subscription. Subscribed To. Party Role Subscription	None	0..*

End of Report

Business Solution Design

1.5.2.7 Request For Party Notification

CLASS (ABIE)	ATTRIBUTE (BBIE)	ASSOCIATION (ASBIE)	SECONDARY CLASS	Official Dictionary Entry Name	Definition	Multiplicity
PartySubscription				Party Subscription. Details	None	
	dataRecipient			Party Subscription. Data Recipient_ Party. GLN_ Identifier	None	1..1
	subscribeToGLN			Party Subscription. Subscribe To_ Party. GLN_ Identifier	None	1..1
	recipientDataPool			Party Subscription. Recipient Data Pool_ Party. GLN_ Identifier	None	1..1
		None	Document	Party Subscription. Inheritance_ Association. Electronic_ Document	None	1..1
		partySubscriptionIdentification	EntityIdentification	Party Subscription. Identification. Entity Identification	None	1..1
		None	PartyCapability	Party Subscription. Association. Party Capability	None	0..*
		partyRoleSubscribedTo	PartyRoleSubscription	Party Subscription. Subscribed To. Party Role Subscription	None	0..*
RequestForPartyNotification				Request For Party Notification. Details	None	
	isReload			Request For Party Notification. Reload. Indicator		1..1

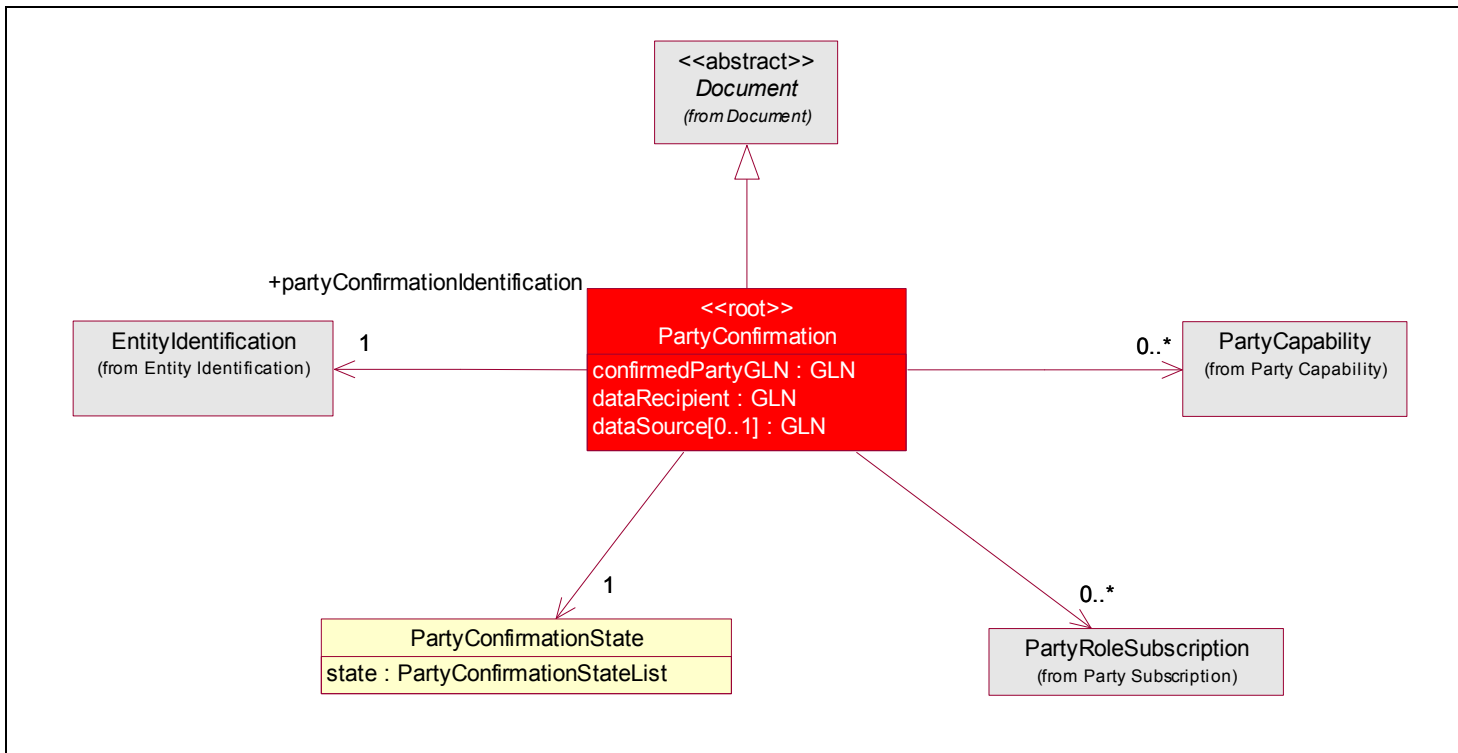
Business Solution Design

CLASS (ABIE)	ATTRIBUTE (BBIE)	ASSOCIATION (ASBIE)	SECONDARY CLASS	Official Dictionary Entry Name	Definition	Multiplicity
		None	PartySubscription	Request For Party Notification. Inheritance Association. Party Subscription	None	1..1

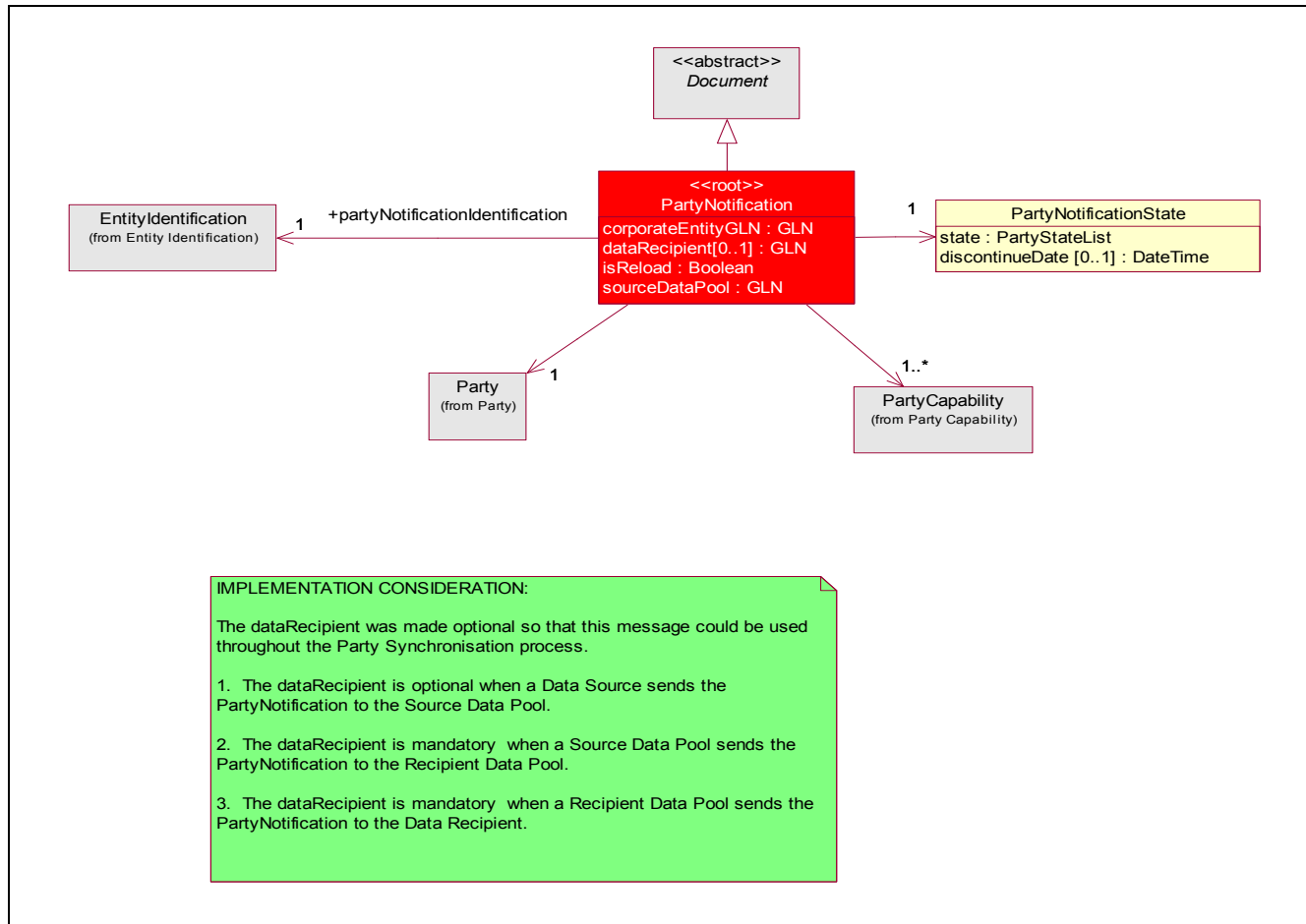
Business Solution Design

1.5.3 Class Diagrams

1.5.3.1 Party Confirmation



1.5.3.2 Party Notification



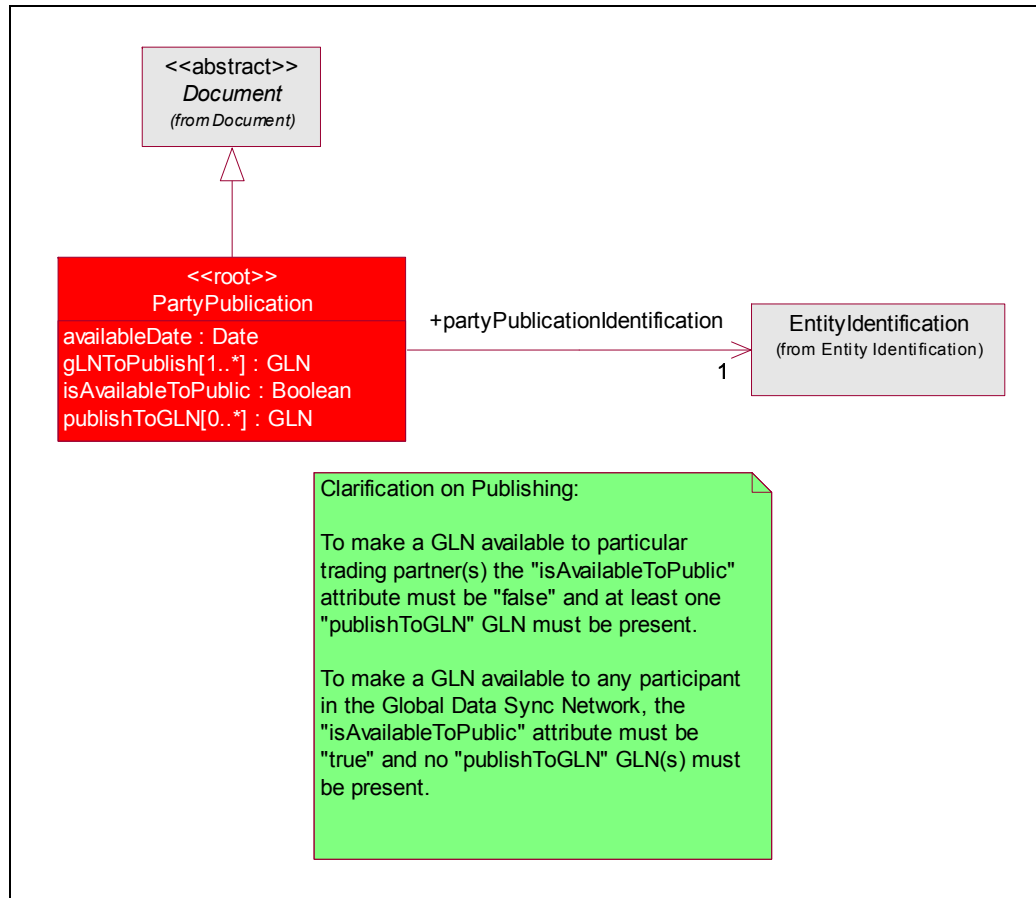
IMPLEMENTATION CONSIDERATION:

The dataRecipient was made optional so that this message could be used throughout the Party Synchronisation process.

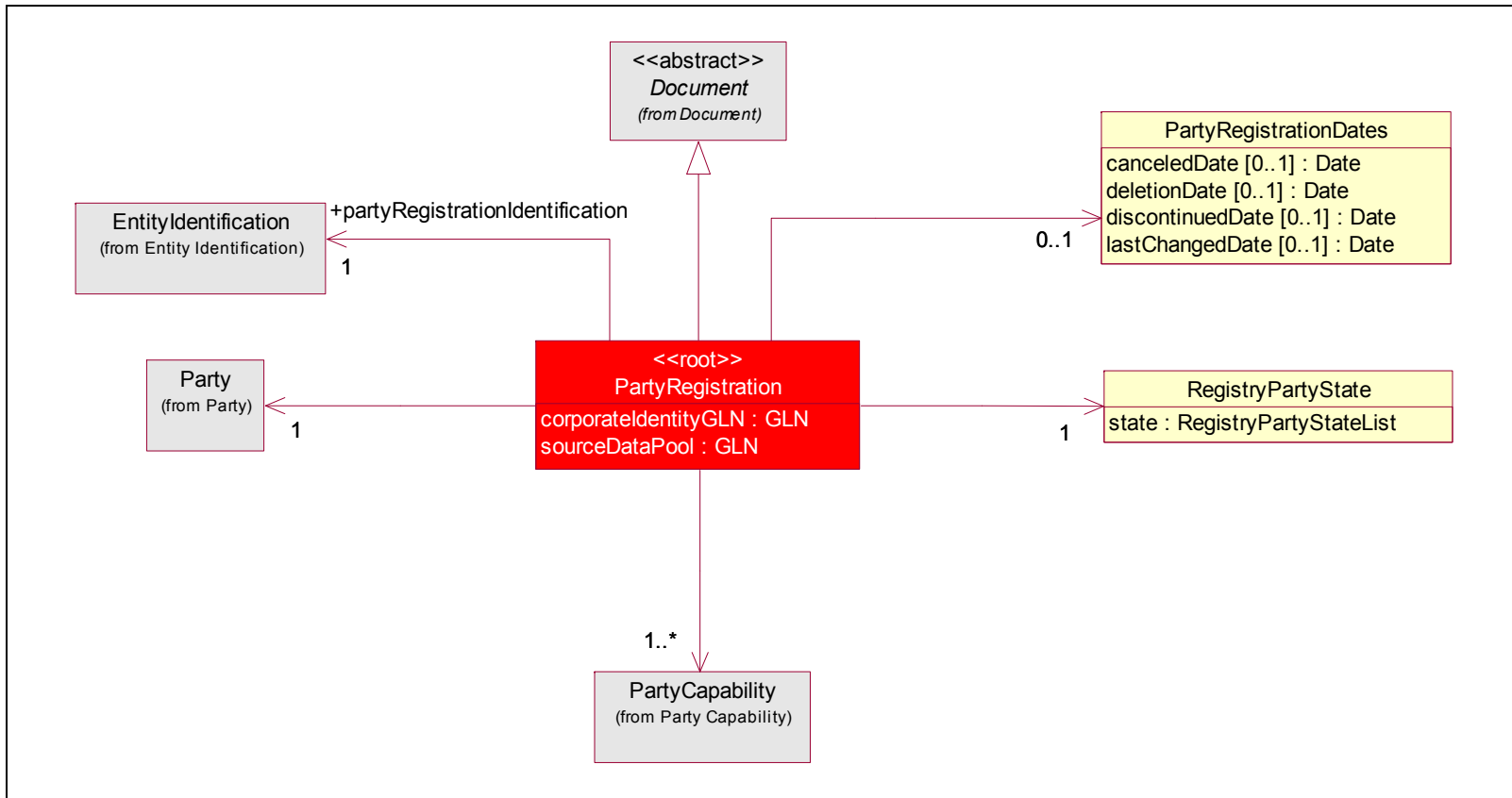
1. The dataRecipient is optional when a Data Source sends the PartyNotification to the Source Data Pool.
2. The dataRecipient is mandatory when a Source Data Pool sends the PartyNotification to the Recipient Data Pool.
3. The dataRecipient is mandatory when a Recipient Data Pool sends the PartyNotification to the Data Recipient.

1.5.3.3 Party Publication

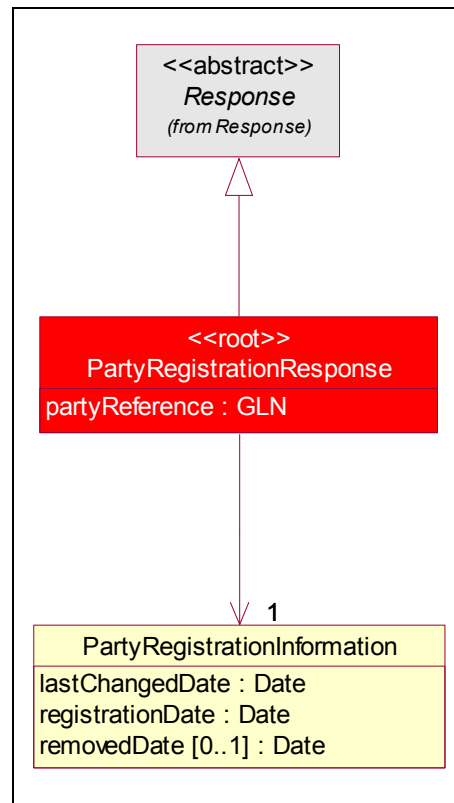
Business Solution Design



1.5.3.4 Party Registration

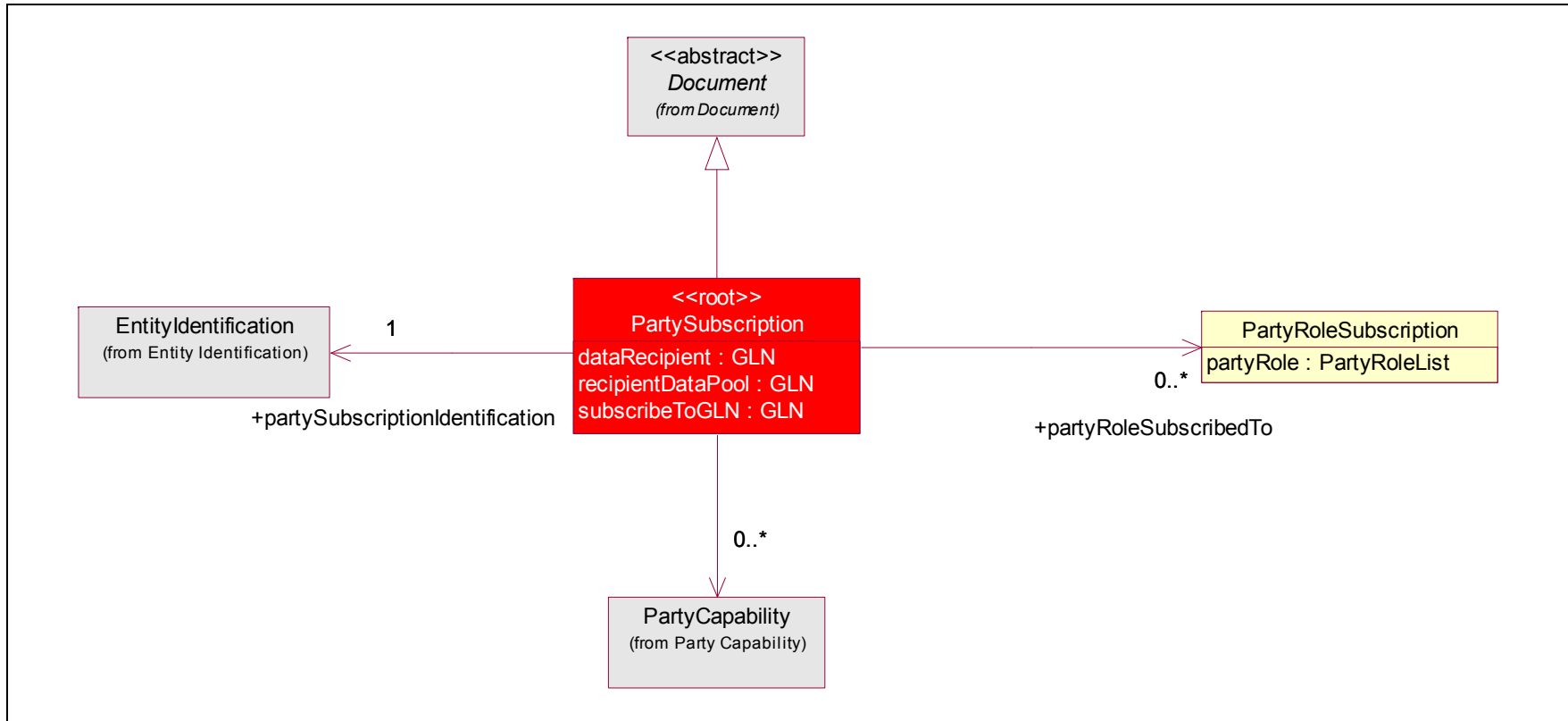


1.5.3.5 Party Registration Response



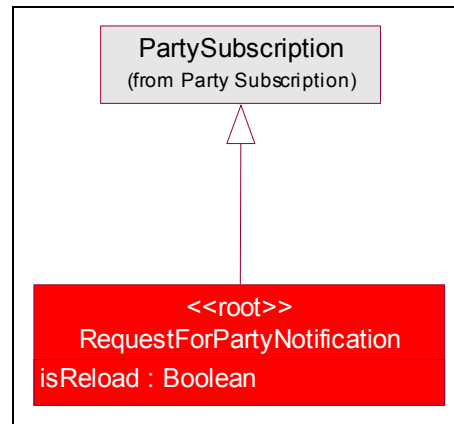
1.5.3.6 Party Subscription

Business Solution Design



Business Solution Design

1.5.3.7 Request for Party Notification



Business Solution Design

1.5.4 Code Lists

Code List Name	Code List Description
Party Confirmation State List	
Code Name	Code Description
ACCEPTED	N/A
REJECTED	N/A
REVIEW	N/A
SYNCHRONISED	N/A

Code List Name	Code List Description
Party Role List	
Code Name	Code Description
BILL_TO	N/A
BROKER_AGENT	N/A
BUYER	N/A
CARRIER	N/A
CONSUMER	N/A
CORPORATE_IDENTITY	N/A
DELIVERY_PARTY	N/A
DISTRIBUTOR	N/A
FACTOR	N/A
FREIGHT_FORWARDER	N/A
INFORMATION_PROVIDER	N/A
INVOICEE	N/A
ISSUER_OF_INVOICE	N/A
LOGISTICS_SERVICE_PROVIDER	N/A
MANUFACTURING_PLANT	N/A
MARK_FOR	N/A
MESSAGE_FROM	N/A
MESSAGE_RECIPIENT	N/A
OPERATING_DIVISION	N/A
OPERATOR	N/A
PARTY_TO_RECEIVE_COMMERCIAL_INVOICE	N/A
PAYEE	N/A
PAYER	N/A
PUBLIC_WAREHOUSE	N/A
REMIT_TO	N/A
SELLER	N/A
SHIP_FROM	N/A
SHIP_TO	N/A
STORE	N/A
SUPPLIER	N/A
WAREHOUSE_AND_OR_DEPOT	N/A

Code List Name	Code List Description
----------------	-----------------------

Business Solution Design

Party State List	
Code Name	Code Description
CANCELED	N/A
DISCONTINUED	N/A
IN_PROGRESS	N/A
REGISTERED	N/A

Code List Name	Code List Description
Registry Party State List	
Code Name	Code Description
CANCELED	N/A
DISCONTINUED	N/A
NEW	N/A
REGISTERED	N/A

Business Solution Design

1.6 Business Document Example

1.7 Implementation Considerations

1.8 Testing

1.8.1 Pass / Fail Criteria

Number	Test Criteria	Related Requirement	Design Element	Pass Criteria	Fail Criteria
1					
2					
3					

1.8.2 Test Data

Attribute	Value

Business Solution Design

1.9 Appendices

1.10 Summary of Changes

Change	BMS Ver- sion	Associated CR Number
•		

2 XML Technical Solution ITRG Packet

The Technical Representation of the Business process is documented in a Technical Solution ITRG Packet containing all supplemental XML artefacts and is used by the Information Requirements Group (ITRG) to evaluate the solution. Upon approval from the Information Technical Requirements Group (ITRG), the Technical Solution ITRG Packet is updated to the Technical Solution Implementers Packet and published with the Business

Message Standard at:

http://www.ean-ucc.org/global_smp/ean.ucc_standards.htm.

Technical Solution ITRG Packet Content:

- Business Message Standard (BMS)
- ITRG Review Packet
 - Style Sheet: This HTML has been created using a Style Sheet that is a visual representation of the data. It is not an actual Style Sheet, but an ex-ample of what a Style Sheet may look like.
 - Instance File: The Instance File is an example of what the schema may look like when it includes live data. This can be used as comparison to a completed schema and can serve as a point of reference for development.
 - Technical Level GDD Report

Technical Solution Implementers Packet Content:

Contains all the message specific.XSD files required to implement

Example:

- AS2Envelope
- Command.xsd
- DocumentCommand.xsd
- Proxy.xsd
- ComponentLibrary.xsd

Both the Business Message Standard and the Implementers Packet are available during the ITRG Review Period in the working documents section of the ITRG eRoom:

http://eroom.uncouncil.org/eRoom/facility/InformationTechnicalAssessmentGroupITAG/0_14f7

All documents for review will be in this folder listed by name of the Change Request and Change Request Number. The Business Message Standard is not open for review, but offered as the basis for determining the suitability of the technical solutions.

This eRoom may be accessed by using the following User Name and Password:

User Name: guest

Password: guest