

# **Business Message Standard (BMS)**

**for**

**Deliver/Full Truckload Load Tender**

**BRG: Deliver**

**BMS Release: 2.0.2**

**Document Version: 0.1.1**

**Release Date: 31.03.2004**

(dd.mm.cyy)



### Change Request Reference

<b>Refer to Change Request (CR) Number(s):</b>	01-000071
<b>CR Submitter(s):</b>	Uniform Code Council
<b>Date of CR Submission to GSMP:</b>	20010925

### Business Requirements Document (BRAD) Reference

<b>BRAD Title:</b> Business Requirements Document (BRD) for Full Truckload Load Tender
<b>BRAD Date:</b> 20030630
<b>BRAD Version:</b> 1.2

<b>BRAD Title:</b>
<b>BRAD Date:</b>
<b>BRAD Version:</b>

### Document Summary

<b>Document Title:</b>	BMS for Deliver/Full Truckload Load Tender
<b>Document Version:</b>	0.1.1
<b>Owner:</b>	Deliver BRG
<b>Status:</b>	(Check one box) <input type="checkbox"/> DRAFT <input checked="" type="checkbox"/> Approved
<b>BMS Template Version:</b>	1.1
<b>Targeted BMS Release:</b>	2.0.2

### Document Change History

*Note: During development include revisions in history. Upon Approval, eliminate revisions and include only delta from previous version.*

Date of Change	Version	Changed By	Reason for Change	Summary of Change	Model Build #
31.03.004	0.1.0	John Ryu	Initial Draft	Migration of BRD to standard BMS/BSD format	Model P4CL: 5890  BSD P4CL: 5973
19.04.2007	0.1.1	Giovanni Biffi	Editorial Changes	Minor Editorial Changes	

# Business Message Standard

---

## Table of contents

---

Chapter	Page
<b>1 Business Solution .....</b>	<b>1</b>
1.1 Business Domain View.....	1
1.1.1 Problem Statement / Business Need.....	1
1.1.2 Objective.....	1
1.1.3 Audience.....	1
1.1.4 Artefacts .....	1
1.1.5 References .....	1
1.1.6 Acknowledgements .....	2
1.1.6.1 BRG Members.....	2
1.1.6.2 ITRG Members .....	2
1.1.6.3 Task/Project Group Participants (Transportation Task Group) .....	3
1.1.6.4 Design Team Members .....	3
1.2 Business Context .....	4
1.3 Additional Technical Requirements Analysis .....	4
1.3.1 Technical Requirements (optional).....	4
1.4 Business Transaction View .....	5
1.4.1 Business Transaction Use Case Diagram.....	5
1.4.2 Use Case Description.....	5
1.4.3 Business Transaction Activity Diagram(s) .....	7
1.4.3.1 Full Truckload Load Tender.....	7
1.4.4 Business Transaction Sequence Diagram .....	8
1.4.4.1 Full Truckload Load Tender.....	8
1.5 Information Model (including GDD Report) .....	9
1.5.1 Data Description: .....	9
1.5.2 GDD Report : .....	10
1.5.3 Class Diagrams .....	19
1.5.3.1 Class Diagram: Full Truckload Load Tender .....	19
1.5.3.2 Class Diagram: FTL Shipment Information.....	20
1.5.4 Code Lists.....	21
1.6 Business Document Example .....	23
1.7 Implementation Considerations.....	23
1.8 Testing.....	23

# **Business Message Standard**

---

---

## Table of contents

---

1.8.1	Pass / Fail Criteria .....	23
1.8.2	Test Data .....	23
1.9	Appendices.....	24
1.10	Summary of Changes.....	24
<b>2</b>	<b>XML Technical Solution ITRG Packet.....</b>	<b>25</b>

# Business Solution Design

---

---

## 1 Business Solution

### 1.1 Business Domain View

#### 1.1.1 Problem Statement / Business Need

A message is needed that can pass Load Tender data from the Shipper (also called Con-signor), Consignee or Third Party to the full truckload carrier.

#### 1.1.2 Objective

To supply the detail design of a Full Truckload Load Tender business transaction needed to meet the requirements of the referenced BRAD(s).

#### 1.1.3 Audience

The audience of the standards would be any participant in the global supply chain. This would include carriers, and their customers and partners.

#### 1.1.4 Artefacts

Artefact name	State	Artefact / State description
BRD Full Truckload Load Tender, Version 1.2, June 30, 2003		Deliver BRG approved this BRD. This BRD was the source to create this BSD.
Change Request # 01-000071		Change request objective was to develop a Core Transport Service Request model and schema.

#### 1.1.5 References

Reference Name	Description
Transportation FTL AS-IS Model, Draft 1.4 July 13, 2001	
Business Requirements Document for Despatch Advice, January 2001	

### 1.1.6 Acknowledgements

#### 1.1.6.1 BRG Members

Function	Name	Company / organisation
BRG Co-chair	Debra Noyes	Johnsonville Sausage, L.L.C.
BRG Co-chair	Sue Donarski	Schneider Logistics
BRG Member	Stephanie Hodge-Daniels	Levi Strauss & Co.
BRG Member	Mike Osiecki	Best Buy Company
BRG Member	Roman Gural	UPS
BRG Member	Wayne Gingerich	Werner Enterprises
BRG Member	Paul Martin	General Mills
BRG Member	Kari Melhus	Target Corporation
BRG Member	Jeff Miller	Kraft Foods, Inc.
BRG Member	Bob Robertson	Manhattan Associates
BRG Member	Stef Spaan	EAN Netherlands
BRG Member	Apostolos Xiradakis	Unilever
BRG Member	Thorsten Kirschner	CCG (EAN Germany)
BRG Member	Aart Koning	Albert Heijn
BRG Member	José Jean-Paul Tavares	EAN Brazil
BRG Member	Mario Abitol	EAN Argentina
BRG Member	Tamari Tashiro	DCC (EAN Japan)
BRG Manager	Bruno Julien	Gencod EAN France

#### 1.1.6.2 ITRG Members

Function	Name	Company / organisation
ITRG Chair		
ITRG Member		
ITRG Member		
ITRG Member		
...		

## Business Solution Design

---

---

### 1.1.6.3 Task/Project Group Participants (Transportation Task Group)

Function	Name	Company / organisation
Co-chair	Rick Battista	Roadway
Co-chair	Sue Donarski	Schneider Logistics
Participant	Doug Anderson	Kleinschmidt
Participant	Shanda Marvin	Procter & Gamble
Participant	Wayne Gingerich	Werner
Participant	Bob Robertson	Manhattan Associates
Participant	John Hervey	NACS
Participant	Scott Keske	Best Buy Company
Participant	Mike Osiecki	Best Buy Company
Participant	Kari Melhus	Target
Participant	Tom Moriarty	J.C. Penney
Participant	Regina De Baker	Watkins
Participant	Patrick Pinter	ABF
Participant	Dana Morton	Fedex
Participant	Franck Napoli	LMI
Participant	Jared Andrews	LMI
Participant	Brian Finale	UPS
Participant	Rita Marie Fernandez	UPS
Participant	Roman Gural	UPS

### 1.1.6.4 Design Team Members

Function	Name	Organisation
Modeller	John Ryu	GS1
XML Technical Designer		
EANCOM Technical Designer		
Peer Reviewer		

# Business Solution Design

---

---

## 1.2 Business Context

Context Category	Value(s)
Industry	All
Geopolitical	All
Product	All
Process	Deliver
System Capabilities	All
Official Constraints	None

## 1.3 Additional Technical Requirements Analysis

### 1.3.1 Technical Requirements (optional)

*(User Interface, Security, Performance, Quality, etc.)*

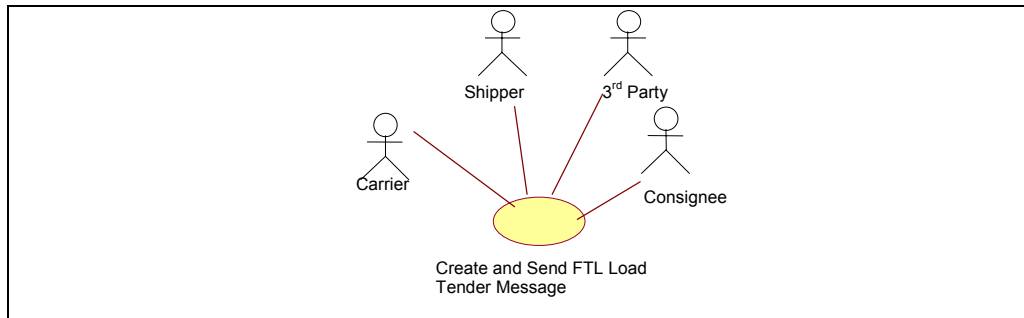
Number	Statement	Rationale
	None	



# Business Solution Design

## 1.4 Business Transaction View

### 1.4.1 Business Transaction Use Case Diagram



### 1.4.2 Use Case Description

<b>Use Case ID</b>	UC-1									
<b>Use Case Name</b>	Create and Send FTL Load Tender Message									
<b>Use Case Description</b>	A standard load tender for FTL would provide the North American Motor Freight industry with an electronic means of communicating shipping instructions to the Carrier from the Shipper, Consignee or Third Party.									
<b>Actors (Goal)</b>	There are four actors in this process, the Carrier, Shipper (also called consignor) and Consignee with another possible actor named Third Party.									
<b>Performance Goals</b>	None									
<b>Preconditions</b>	Alignment of data between trading partners such as an explicit agreement between Shipper and Consignee to deliver and receive, respectively.									
<b>Post conditions</b>	<p><b>Successful End Condition:</b></p> <p>Shipper, Consignee, or Third party sends load tender message to carrier.</p> <p><b>Failed End Condition:</b></p> <p>Shipper, Consignee, or Third party cannot send load tender message to carrier.</p>									
<b>Scenario</b>	<p><b>Begins when</b></p> <p>The process starts when a shipper consignee or Third party recognizes the need to tender a load.</p> <p><b>Continues with...</b></p> <table border="1"> <thead> <tr> <th>Step #</th> <th>Actor</th> <th>Activity Step</th> </tr> </thead> <tbody> <tr> <td>1</td> <td>Shipper, Consignee or Third Party</td> <td>Prepares load tender message consisting of all relevant data regarding the goods to be picked up and transported from initial origin to final destination and all intermediate stops if applicable.</td> </tr> <tr> <td>2</td> <td>Shipper, Consignee or Third</td> <td>Sends the Load Tender Message to the Carrier as a Load Tender.</td> </tr> </tbody> </table>	Step #	Actor	Activity Step	1	Shipper, Consignee or Third Party	Prepares load tender message consisting of all relevant data regarding the goods to be picked up and transported from initial origin to final destination and all intermediate stops if applicable.	2	Shipper, Consignee or Third	Sends the Load Tender Message to the Carrier as a Load Tender.
Step #	Actor	Activity Step								
1	Shipper, Consignee or Third Party	Prepares load tender message consisting of all relevant data regarding the goods to be picked up and transported from initial origin to final destination and all intermediate stops if applicable.								
2	Shipper, Consignee or Third	Sends the Load Tender Message to the Carrier as a Load Tender.								

## Business Solution Design

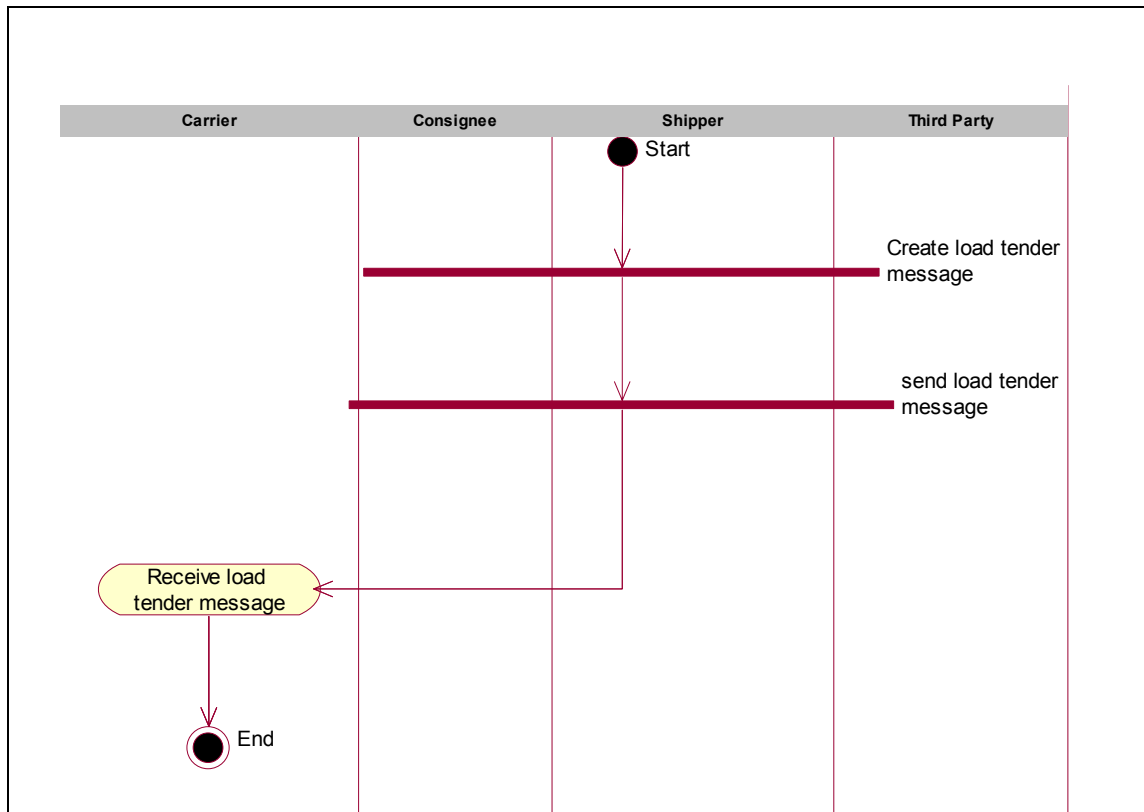
---

---

		Party	
	3	Carrier	Receives Load Tender Message
	<b>Ends when</b> The carrier receives the tender message.		
<b>Alternative Scenario</b>	None		
<b>Related Requirements</b>	None		
<b>Related Rules</b>	None		

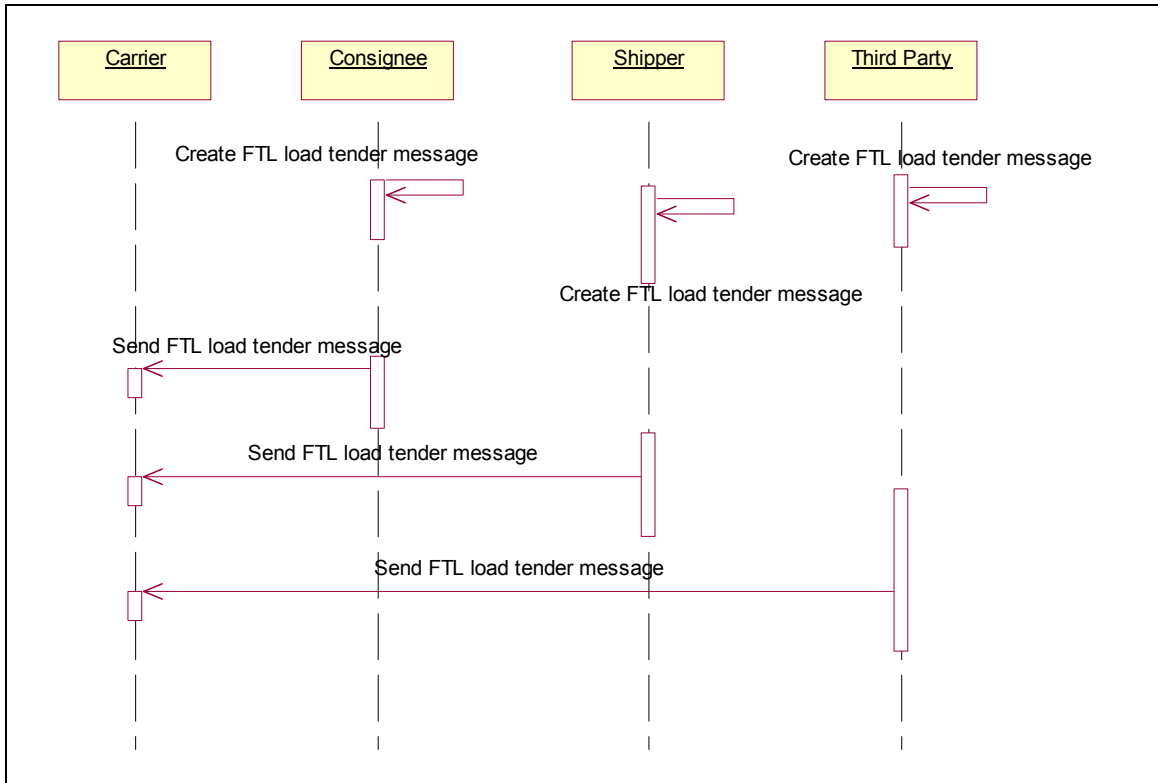
## 1.4.3 Business Transaction Activity Diagram(s)

### 1.4.3.1 Full Truckload Load Tender



**1.4.4 Business Transaction Sequence Diagram**

**1.4.4.1 Full Truckload Load Tender**



## Business Solution Design

---

### 1.5 Information Model (including GDD Report)

#### 1.5.1 Data Description:

*(Contains list of attributes included in the model and the related requirement which led to its inclusion in the design.)*

Class (ABIE)	Attribute (BBIE)	Association (ASBIE)	Secondary Class	Related Requirements
EquipmentInformation				
FTLShipmentInformation				Business Requirements Document (BRD) for FTL Load Tender, Version 1.2, 20030630
FullTruckloadLoadTender				Business Requirements Document (BRD) for FTL Load Tender
PalletInformation				Business Requirements Document (BRD) for FTL Load Tender
ShipmentStopOffGroup				Business Requirements Document (BRD) for FTL Load Tender
StopOffDeliveryInformation				Business Requirements Document (BRD) for FTL Load Tender

## Business Solution Design

---

### 1.5.2 GDD Report :

(Output from GDD should be pasted in this section.)

#### Full Truckload Load Tender

Class (ABIE)	Attribute (BBIE)	Association (ASBIE)	Secondary Class	Official Dictionary Entry Name	Definition	Multiplicity
EquipmentInformation				Equipment. Details	!! This class is optional with possible multiple occurrences. If Equipment Information is required then an equipment type code must be selected and the carrier needs to be identified.	
	equipmentType			Equipment. Equipment Type. Equipment Type_Code	!! This class is an enumerated class and is mandatory if Equipment Information class is used.	1..1
	length			Equipment. Length. Longitude_Measure	Not Available	1..1
		carrier	PartyIdentification	Equipment. Carrier. Party Identification	!! This external class originates from Party Identification. The Full Truckload Load Tender must include the identification of the car-	1..1

## Business Solution Design

Class (ABIE)	Attribute (BBIE)	Association (ASBIE)	Secondary Class	Official Dictionary Entry Name	Definition	Multiplicity
					rier. This class has no attributes but provides for identification. A Primary party identification must be selected.	
FTLShipmentInformation				Full Truck Load_Planned_Shipment. Details	!! This class is mandatory in two places in the Full Truckload Load Tender class diagram. From 'Full Truckload Load Tender' class From 'Shipment Stop Off Group' classThis 'FTL Shipment Information' class has a mandatory association to 'Deliver Shipment Information' class which identifies number of units and weight of shipment.	
	shipmentSpecialHandling			Full Truck Load_Planned_Shipment. Shipment Special Handling. Shipment Special Handling_Code	Not Available	0..*
	specialInstruction			Full Truck Load_Planned_Shipment. Special Instructions. Lan-	!! This external class originates from Description. It is optional with the role name of special instruction. This class allows for text	0..*

## Business Solution Design

Class (ABIE)	Attribute (BBIE)	Association (ASBIE)	Secondary Class	Official Dictionary Entry Name	Definition	Multiplicity
				guage_Text	and the language code.	
	truckloadSpecialService			Full Truck Load_Planned_Shipment. Truckload Special Service. Truckload Special Service_Code	Not Available	0..*
		referenceNumber	DeliverReference	Full Truck Load_Planned_Shipment. Reference Number. Deliver_Entity Reference	Not Available	0..*
		shipmentInformation	DeliverShipmentInformation	Full Truck Load_Planned_Shipment. Association. Shipment Information	Not Available	1..1
FullTruckloadLoadTender				Full Truck Load_Load Tender. Details	!! This is the root class for the Full Truckload Load Tender Message.	
	declaredValue			Full Truck Load_Load Tender. Declared Value. Amount	!! Total monetary value. For US ACH, amount may not exceed 99999999.99. This external class originates from Amount. Amount	0..1



## Business Solution Design

Class (ABIE)	Attribute (BBIE)	Association (ASBIE)	Secondary Class	Official Dictionary Entry Name	Definition	Multiplicity
					class is optional with a role name of declared value.	
	mustRespond-ByDateAndTime			Full Truck Load _ Load Tender. Must Respond By_ Date Time. Date Time	!! The carrier must acknowledge to the consigner if the booking request was accepted or rejected. This attribute has a 'Yes' or 'No' value to record this. (This is a direct copy and paste from BMS, but Definition is wrong.)	0..1
		billTo	DeliverLocationInformation	Full Truck Load _ Load Tender. Choice_ Bill To_ Association. Deliver_ Location	Not Available	1..1
		customs-Broker	DeliverLocationInformation	Full Truck Load _ Load Tender. Choice_ Customs Broker_ Association. Deliver_ Location	Not Available	1..1
		orderedBy	DeliverLocationInformation	Full Truck Load _ Load Tender. Choice_ Ordered By_ Association. Deliver_ Location	Not Available	1..1
		partyFill-	DeliverLocationIn-	Full Truck Load _	Not Available	1..1

## Business Solution Design

Class (ABIE)	Attribute (BBIE)	Association (ASBIE)	Secondary Class	Official Dictionary Entry Name	Definition	Multiplicity
		ingShippersOrder	formation	Load Tender. Choice_Party Filling Shippers Order_Association. Deliver_Location		
		None	Document	Full Truck Load_Load Tender. Inheritance. Electronic_Document	Not Applicable	1..1
		fullTruckloadLoadTenderIdentification	EntityIdentification	Full Truck Load_Load Tender. Identification. Entity Identification	!! This class originates from Entity Identification. This class is used in two places. The first use is mandatory where Full Truckload Load Tender Identification must be identified. The second use is mandatory referring to a purchase order number.	1..1
		None	EquipmentInformation	Full Truck Load_Load Tender. Association. Equipment	!! This class is optional with possible multiple occurrences. If Equipment Information is required then an equipment type code must be selected and the carrier needs to be identified.	0..*
		shipmentDetail	FTLShipmentInformation	Full Truck Load_Load Tender. Shipment Detail.	!! This class is mandatory in two places in the Full Truckload Load Tender class diagram. From 'Full	1..1

## Business Solution Design

Class (ABIE)	Attribute (BBIE)	Association (ASBIE)	Secondary Class	Official Dictionary Entry Name	Definition	Multiplicity
				Full Truck Load_Planned_Shipment	Truckload Load Tender' class From 'Shipment Stop Off Group' class This 'FTL Shipment Information' class has a mandatory association to 'Deliver Shipment Information' class which identifies number of units and weight of shipment.	
		carrier	PartyIdentification	Full Truck Load_Load Tender. Carrier. Party Identification	!! This external class originates from Party Identification. The Full Truckload Load Tender must include the identification of the carrier. This class has no attributes but provides for identification. A Primary party identification must be selected.	1..1
		None	Shipment-StopOffGroup	Full Truck Load_Load Tender. Association. Full Truck Load_Load Tender Line	!! This class is optional with possible multiple occurrences.	0..*
PalletInformation				Shipment_Pallet.Details	!! This class is optional. There is one mandatory association to 'Pallet Exchange Code List' class.	
	palletExchange			Shipment_Pallet.Pallet Exchange.	Not Available	1..1

## Business Solution Design

Class (ABIE)	Attribute (BBIE)	Association (ASBIE)	Secondary Class	Official Dictionary Entry Name	Definition	Multiplicity
				Pallet Exchange Code		
	palletQuantity			Shipment_Pallet.Quantity. Quantity	!! Integer (Deficient Definition)	1..1
ShipmentStopOffGroup				Full Truck Load Load Tender Line. Details	!! This class is optional with possible multiple occurrences.	
	stopOffSequence			Full Truck Load Load Tender Line. Stop Off_Sequence. Identifier	!! String (Deficient Definition)	1..1
		commodityInformation	CommodityGroup	Full Truck Load Load Tender Line. Association. Freight_Commodity	Not Available	0..*
		shipFrom	DeliverLocationInformation	Full Truck Load Load Tender Line. Ship From. Deliver_Location	Point of origin for shipped goods	1..1
		shipTo	DeliverLocationInformation	Full Truck Load Load Tender Line. Ship To. Deliver_Location	Not Available	1..*
		purchaseOr-	EntityIdentification	Full Truck Load Load Tender Line.	Not Available	1..1

## Business Solution Design

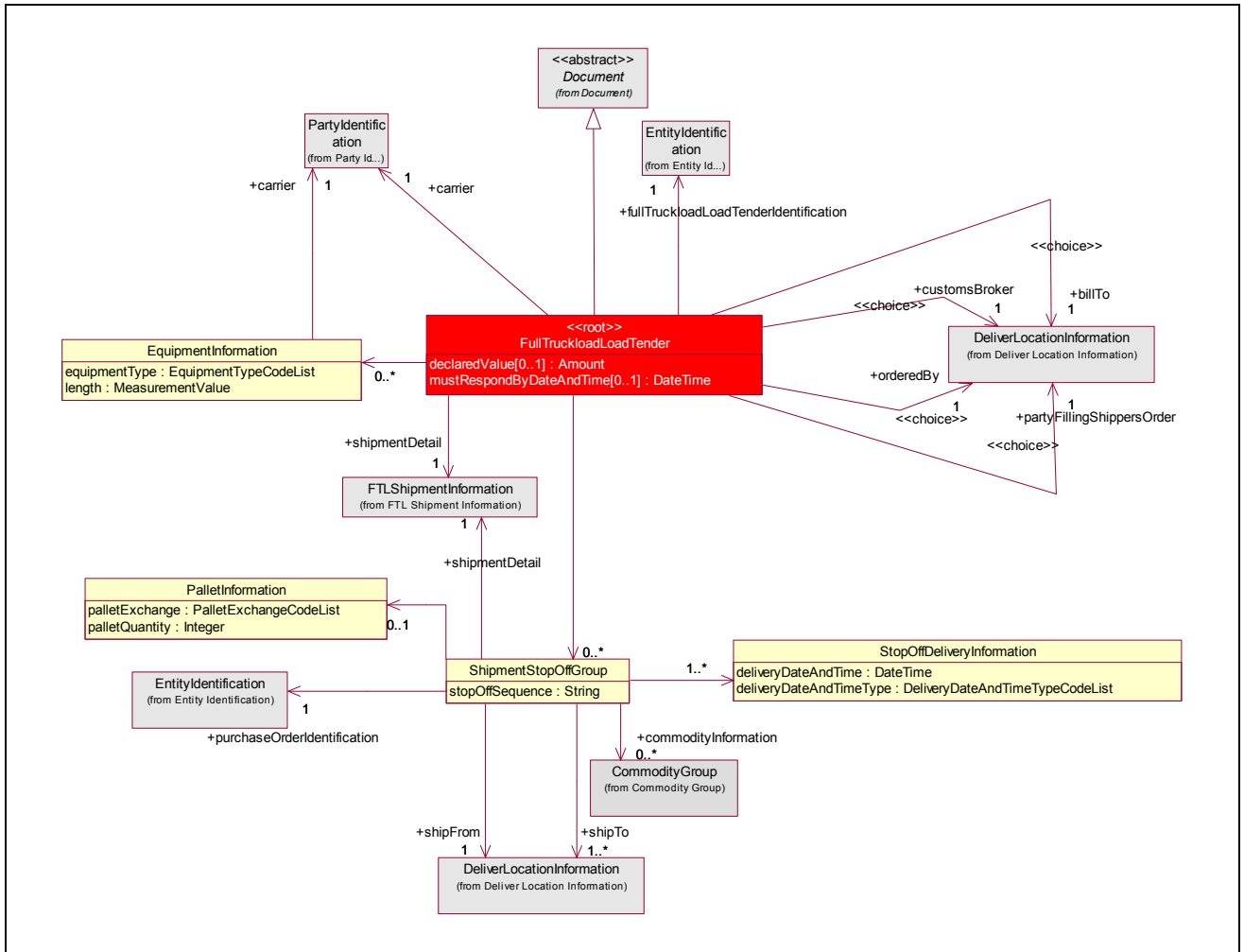
Class (ABIE)	Attribute (BBIE)	Association (ASBIE)	Secondary Class	Official Dictionary Entry Name	Definition	Multiplicity
		derIdentification		Purchase Order Identification. Entity Identification		
		shipmentDetail	FTLShipmentInformation	Full Truck Load Load Tender Line. Shipment Detail. Full Truck Load_Planned_Shipment	Not Available	1..1
		None	PalletInformation	Full Truck Load Load Tender Line. Association. Shipment_Pallet	Not Available	0..1
		None	StopOffDeliveryInformation	Full Truck Load Load Tender Line. Delivery Date And Time. Stop Off_Planned_Delivery	Not Available	1..*
StopOffDeliveryInformation				Stop Off_Planned_Delivery. Details	!! This class is mandatory with possible multiple occurrences. A Delivery Date and Time Type Code must be selected for every occurrence of this class.	
	delivery-DateAndTime			Stop Off_Planned_De-	!! Date and time associated with different delivery date and time	1..1

## Business Solution Design

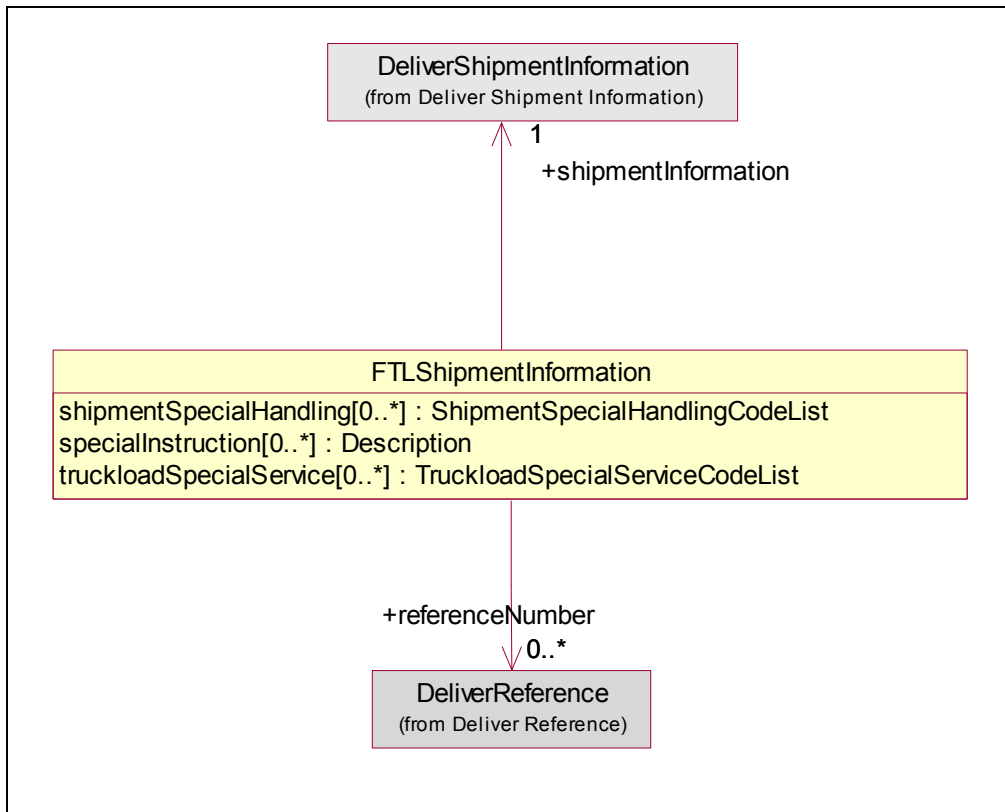
Class (ABIE)	Attribute (BBIE)	Association (ASBIE)	Secondary Class	Official Dictionary Entry Name	Definition	Multiplicity
				livery. Delivery_ Date Time. Date Time	types.	
	delivery-DateAnd-TimeType			Stop Off_Planned_ Delivery. Delivery_ Date And Time Type. Delivery Date Time Type_ Code	Not Available	1..1

## 1.5.3 Class Diagrams

### 1.5.3.1 Class Diagram: Full Truckload Load Tender



## 1.5.3.2 Class Diagram: FTL Shipment Information





## Business Solution Design

---

---

### 1.5.4 Code Lists

(Output from GDD should be pasted in this section.)

Code List Name	Code List Description
DeliveryDateAndTimeTypeCodeList	Not available
Code Name	Code Description
APPOINTMENT_GRANTED	Not available
APPOINTMENT_SCHEDULED	Not available
DELIVER_BY	Not available
DELIVER_NO_LATER_THAN	Not available
DELIVER_NOT_BEFORE	Not available
REQUESTED	Not available
REQUESTED_SCHEDULED	Not available
SCHEDULED	Not available
SHIP_NO_LATER_THAN	Not available
SHIP_NOT_BEFORE	Not available

Code List Name	Code List Description
PalletExchangeCodeList	Not available
Code Name	Code Description
EXCHANGE_PALLETS	Not available
PALLETS_TO_BE_PURCHASED_BY_CUSTOMER	Not available
RETURN_PALLETS	Not available
THIRD_PARTY_PALLET_EXCHANGE	Not available



## Business Solution Design

---

---

### 1.6 Business Document Example

Not available

### 1.7 Implementation Considerations

None

### 1.8 Testing

#### 1.8.1 Pass / Fail Criteria

Number	Test Criteria	Related Requirement	Design Element	Pass Criteria	Fail Criteria
1	None				

#### 1.8.2 Test Data

Attribute	Value
None	

## Business Solution Design

---

---

### 1.9 Appendices

None

### 1.10 Summary of Changes

*(Details changes to BMS for each version by BMS Section)*

Change	BMS Version	Associated CR Number
<ul style="list-style-type: none"><li>• Conversion from BRD to BMS/BSD</li></ul>	2.0.1	

### 2 XML Technical Solution ITRG Packet

The Technical Representation of the Business process is documented in a Technical Solution ITRG Packet containing all supplemental XML artefacts and is used by the Information Requirements Group (ITRG) to evaluate the solution. Upon approval from the Information Technical Requirements Group (ITRG), the Technical Solution ITRG Packet is updated to the Technical Solution Implementers Packet and published with the Business

Message Standard at:

[http://www.ean-ucc.org/global\\_smp/ean.ucc\\_standards.htm](http://www.ean-ucc.org/global_smp/ean.ucc_standards.htm).

Technical Solution ITRG Packet Content:

- Business Message Standard (BMS)
- ITRG Review Packet
  - Style Sheet: This HTML has been created using a Style Sheet that is a visual representation of the data. It is not an actual Style Sheet, but an example of what a Style Sheet may look like.
  - Instance File: The Instance File is an example of what the schema may look like when it includes live data. This can be used as comparison to a completed schema and can serve as a point of reference for development.
  - Technical Level GDD Report

Technical Solution Implementers Packet Content:

Contains all the message specific.XSD files required to implement

Example:

- AS2Envelope
- Command.xsd
- DocumentCommand.xsd
- Proxy.xsd
- ComponentLibrary.xsd

Both the Business Message Standard and the Implementers Packet are available during the ITRG Review Period in the working documents section of the ITRG eRoom:

[http://eroom.uncouncil.org/eRoom/facility/InformationTechnicalAssessmentGroupITAG/0\\_14f7](http://eroom.uncouncil.org/eRoom/facility/InformationTechnicalAssessmentGroupITAG/0_14f7)

All documents for review will be in this folder listed by name of the Change Request and Change Request Number. The Business Message Standard is not open for review, but offered as the basis for determining the suitability of the technical solutions.

This eRoom may be accessed by using the following User Name and Password:

User Name: guest

Password: guest