

Business Message Standard (BMS)

for

**Deliver/Motor Fuel Carrier
Bill of Lading**

BRG: Deliver

BMS Release: 2.0.2

Document Version: 2.0.3

Release Date: 31.03.2005



Change Request Reference

Refer to Change Request (CR) Number(s):	N/A
CR Submitter(s):	N/A
Date of CR Submission to GSMP:	N/A

Business Requirements Document (BRAD) Reference

BRAD Title: LTL and Motor Fuel Carrier Bill of Lading – Business Requirement Document
BRAD Date: 11/10/2004
BRAD Version: 1.0.1

BRAD Title:
BRAD Date:
BRAD Version:

Document Summary

Document Title:	BMS for Deliver/Motor Fuel Carrier Bill of Lading
Document Version:	2.0.3
Owner:	Deliver BRG
Status:	(<i>Check one box</i>) <input type="checkbox"/> DRAFT <input checked="" type="checkbox"/> Approved
BMS Template Version:	1.0
Targeted BMS Release:	2.0.2

Document Change History

Date of Change	Version	Changed By	Reason for Change	Summary of Change	Model Build #
31/12/2004	2.0.0	Rob Toole	Created Motor Fuel Carrier BOL BSD from BRAD		N/A
31/03/2005	2.0.2	Andrew Hearn	Context Update	Updated the context listed within the document	N/A
19/04/2007	2.0.3	Giovanni Biffi	Editorial Changes	Minor Editorial Updates	

Business Message Standard

Table of contents

Chapter	Page
1 Business Solution Design	5
1.1 Business Domain View.....	5
1.1.1 Problem Statement / Business Need.....	5
1.1.2 Objective.....	5
1.1.3 Audience.....	5
1.1.4 Artefacts	5
1.1.5 References	5
1.1.6 Acknowledgements	6
1.1.6.1 BRG Members.....	6
1.1.6.2 ITRG Members	6
1.1.6.3 Task/Project Group Participants (<i>where applicable</i>)	7
1.1.6.4 Design Team Members	7
1.2 Business Context	8
1.3 Additional Technical Requirements Analysis	8
1.3.1 Technical Requirements (optional).....	8
1.4 Business Transaction View	9
1.4.1 Business Transaction Use Case Diagram.....	9
1.4.2 Motor Fuel Carrier Bill Of Lading.....	9
1.4.3 Business Transaction Activity Diagram(s).....	11
1.4.4 Business Transaction Sequence Diagram(s) (optional)	11
1.5 Information Model (including GDD Report)	12
1.5.1 Data Description:	12
1.5.2 GDD Report :	18
1.5.3 Class Diagram	27
1.5.4 Code Lists.....	28
1.5.4.1 Blended Or Additive Code List	28
1.5.4.2 Deliver Payment Method Code List	28
1.5.4.3 Equipment Type Code List	28
1.5.4.4 Shipment Special Handling Code List	28
1.5.4.5 Truckload Special Service Code List.....	28
1.6 Business Document Example	29
1.7 Implementation Considerations.....	29

Business Message Standard

Table of contents

1.8	Testing.....	29
1.8.1	Pass / Fail Criteria	29
1.8.2	Test Data	29
1.9	Appendices.....	30
1.10	Summary of Changes.....	30
2	XML Technical Solution ITRG Packet.....	31

Business Solution Design

1 Business Solution Design

1.1 Business Domain View

1.1.1 Problem Statement / Business Need

A message is needed for a shipper to electronically pass load information from a consignor to a motor carrier to a consignee similar to the hardcopy Bill of Lading.

1.1.2 Objective

To supply the detail design of a Motor Carrier Bill of Lading transaction needed to meet the requirements of the referenced BRAD(s).

1.1.3 Audience

The audience for this document is the global business community within the motor carrier sector being any business that ships, carries, or receives goods at one or more points in the supply chain.

1.1.4 Artefacts

Artefact name	State	Artefact / State description
Business Requirements Worksheet For Bill of Lading		Outlines broad Business Requirements for the processing of a Motor Carrier Bill of Lading.

1.1.5 References

Reference Name	Description
Change Request #02-000200	
BRD for LTL and Motor Fuel Carrier BOL V 1.0.1 11-10-2004	

1.1.6 Acknowledgements

1.1.6.1 BRG Members

Function	Name	Company
BRG Manager	Bruno, Julien	Gencod EAN France
BRG Co-Chair	Noyes, Debra	Johnsonville Sausage
BRG Co-Chair	Donarski, Sue	Schneider Logistics
BRG Member	Mario Abitol	EAN Argentina
BRG Member	Regina De Baker	Watkins
BRG Member	Jean François Fusco	Geodis Solution
BRG Member	Wayne Gingerich	Werner Enterprises
BRG Member	Roman Gural	UPS
BRG Member	Thorsten Kirschner	CCG (EAN Germany)
BRG Member	Aart Koning	Albert Heijn
BRG Member	Paul Martin	General Mills
BRG Member	Shanda Marvin	Procter & Gamble
BRG Member	Kari Melhus	Target Corporation
BRG Member	Jeff Miller	Kraft Foods, Inc.
BRG Member	Mike Osiecki	Best Buy Company
BRG Member	Bob Robertson	Manhattan Associates
BRG Member	Tan Jin Soon	SANC (EAN Singapore)
BRG Member	Tamari Tashiro	DCC (EAN Japan)
BRG Member	José Jean-Paul Tavares	EAN Brazil
BRG Member	Marco Van Der Lee	EAN Netherlands
BRG Member	Apostolos Xiradakis	Unilever

1.1.6.2 ITRG Members

Function	Name	Company / organisation
ITRG Chair		
ITRG Member		
ITRG Member		
ITRG Member		
...		

1.1.6.3 Task/Project Group Participants (*where applicable*)

Function	Name	Company / organisation
Participant	Bill, Lohse	ABF
Participant	Bob, Robertson	Manhattan Associates
Participant	Brian, Finale	UPS
Participant	Dana, Morton	Fedex
Participant	Debra, Noyes	Johnsonville Sausage
Participant	Doug, Anderson	Kleinschmidt
Participant	Franck, Napoli	LMI
Participant	Jared, Andrews	LMI
Participant	John, Hervey	NACS
Participant	Kari, Melhus	Target
Participant	Kevin, Wiederkeher	ABF
Participant	Mike, Osiecki	Best Buy Company
Participant	Patrick, Pinter	ABF
Participant	Regina, De Baker	Watkins
Co-chair	Rick, Battista	Roadway
Participant	Roman, Gural	UPS
Participant	Scott, Keske	Best Buy Company
Participant	Shanda, Marvin	Procter & Gamble
Co-chair	Sue, Donarski	Schneider Logistics
Participant	Tan, Jin Soon	SANC (EAN Singapore)
Participant	Wayne, Gingerich	Werner
...		

1.1.6.4 Design Team Members

Function	Name	Organisation
Modeller	Eric, Kauz	GS1
XML Technical Designer		
EANCOM Technical Designer		
Peer Reviewer	John, Ryu	GS1

Business Solution Design

1.2 Business Context

Context Category	Value(s)
Industry	All
Geopolitical	All
Product	All
Process	Deliver
System Capabilities	EAN.UCC
Official Constraints	None

1.3 Additional Technical Requirements Analysis

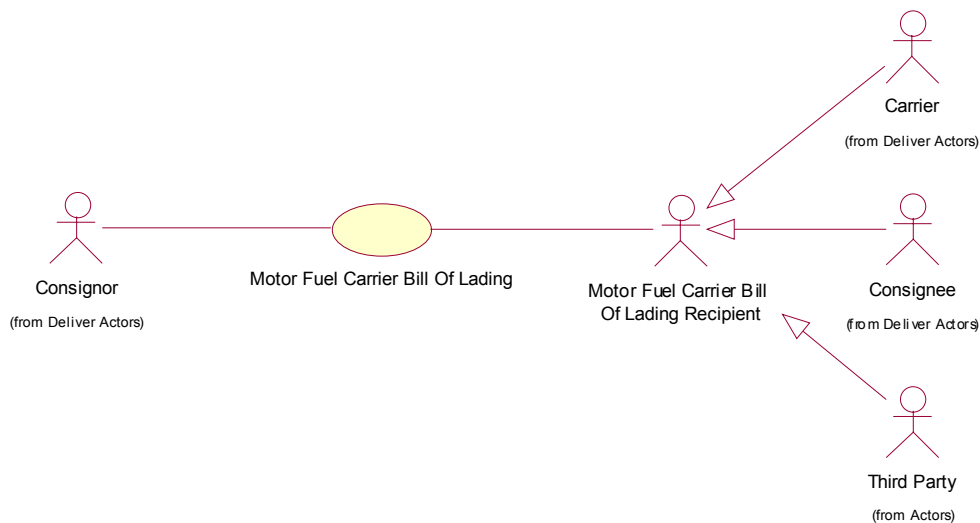
1.3.1 Technical Requirements (optional)

(User Interface, Security, Performance, Quality, etc.)

Number	Statement	Rationale

1.4 Business Transaction View

1.4.1 Business Transaction Use Case Diagram



1.4.2 Motor Fuel Carrier Bill Of Lading

Use Case Name	Motor Fuel Carrier Bill of Lading
Use Case Description	This Use Case describes the exchange of the Motor Carrier Bill of Lading for Motor Fuels. The use of a Motor Carrier Bill of Lading in this Use Case can represent a shipment from a single origin to multiple destinations. The carrier will keep the original Bill of Lading on file and use a delivery receipt for confirmation of the delivery of goods. The Motor Carrier Bill of Lading referenced in this Use Case is an electronic message version of the traditional bill of lading.
Actors	<p>Carrier: Party responsible for the transport of freight/goods.</p> <p>Consignor: Party responsible for the origination of the Motor Carrier Bill of Lading.</p> <p>Consignee: Party receiving the freight/goods.</p> <p>Third Party: Party acting on behalf of a consignor or consignee.</p> <p>Motor Fuel Carrier Bill of Lading Recipient: Generalization for all actors receiving a Motor Fuel Carrier Bill of Lading. Can include the consignor, consignee, or a third party.</p>
Preconditions	Freight contracts and/or trading partner agreements are in place and the trading partners are capable of sending and receiving electronic messages. Consignor has motor fuel ready for carrier. Consignee

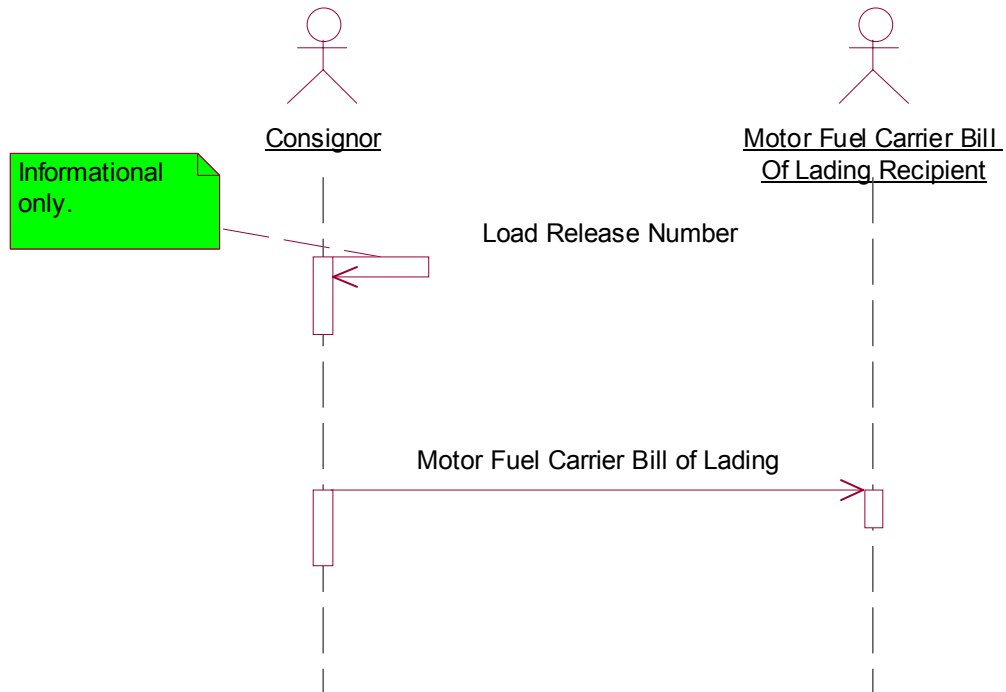
Business Solution Design

	provides a load release number to the consignor.						
Postconditions	<p>Success: The carrier, consignee and other third parties receive the Motor Fuel Carrier Bill of Lading.</p> <p>Failure: The carrier, consignee and other third parties do not receive the Motor Fuel Carrier Bill of Lading.</p>						
Scenario	<p>Begins when the consignor transmits the Motor Fuel Carrier Bill of Lading including the information required for Motor Fuel Carriers to the carrier, consignee and third parties.</p> <p>Continues with...</p> <table border="1"> <thead> <tr> <th>Step #</th> <th>Actor</th> <th>Activity Step</th> </tr> </thead> <tbody> <tr> <td>(Se- quen- tial num- ber)</td> <td></td> <td></td> </tr> </tbody> </table> <p>Ends when the carrier, consignee and other third parties receive the Motor Fuel Carrier Bill of Lading.</p>	Step #	Actor	Activity Step	(Se- quen- tial num- ber)		
Step #	Actor	Activity Step					
(Se- quen- tial num- ber)							
Alternative Scenario	None						

1.4.3 Business Transaction Activity Diagram(s)

N/A

1.4.4 Business Transaction Sequence Diagram(s) (optional)



Business Solution Design

1.5 Information Model (including GDD Report)

1.5.1 Data Description:

Class (ABIE)	Attribute (BBIE)	Association (ASBIE)	Secondary Class	Related Requirements
BillOfLadingHazardousInformation				BRD for LTL and Motor Fuel Carrier BOL V 1.0.1 11-10-2004
	dangerousGoodsPackingGroup			BRD for LTL and Motor Fuel Carrier BOL V 1.0.1 11
	hazardousMaterialsClass			BRD for LTL and Motor Fuel Carrier BOL V 1.0.1 11
	hazardousMaterialsDescription			BRD for LTL and Motor Fuel Carrier BOL V 1.0.1 11
	hazardousMaterialsSequenceNumber			BRD for LTL and Motor Fuel Carrier BOL V 1.0.1 11
	shippingCommodityName			BRD for LTL and Motor Fuel Carrier BOL V 1.0.1 11
	technicalCommodityName			BRD for LTL and Motor Fuel Carrier BOL V 1.0.1 11
	unitedNationsNumber			BRD for LTL and Motor Fuel Carrier BOL V 1.0.1 11
		None	Contact	BRD for LTL and Motor Fuel Carrier BOL V 1.0.1 11
				BRD for LTL and Motor Fuel Carrier BOL V 1.0.1 11
CarrierIdentification				BRD for LTL and Motor Fuel Carrier BOL V 1.0.1 11
	carrierPROIdentification			BRD for LTL and Motor Fuel Carrier

Business Solution Design

Class (ABIE)	Attribute (BBIE)	Association (ASBIE)	Secondary Class	Related Requirements
				BOL V 1.0.1 11
		carrierIdentification	PartyIdentification	BRD for LTL and Motor Fuel Carrier BOL V 1.0.1 11
				BRD for LTL and Motor Fuel Carrier BOL V 1.0.1 11
CommodityClassification				BRD for LTL and Motor Fuel Carrier BOL V 1.0.1 11
	commodityClassificationCode			BRD for LTL and Motor Fuel Carrier BOL V 1.0.1 11
	commodityClassificationCodeType			BRD for LTL and Motor Fuel Carrier BOL V 1.0.1 11
				BRD for LTL and Motor Fuel Carrier BOL V 1.0.1 11
DriverInformation				BRD for LTL and Motor Fuel Carrier BOL V 1.0.1 11
	commercialDriversLicenseNumber			BRD for LTL and Motor Fuel Carrier BOL V 1.0.1 11
	driverLicenseOriginOfIssue			BRD for LTL and Motor Fuel Carrier BOL V 1.0.1 11
	None			BRD for LTL and Motor Fuel Carrier BOL V 1.0.1 11
				BRD for LTL and Motor Fuel Carrier BOL V 1.0.1 11
MotorFuelCarrierBOLDateTime				BRD for LTL and Motor Fuel Carrier BOL V 1.0.1 11
	gateIn			BRD for LTL and Motor Fuel Carrier BOL V 1.0.1 11
	loadBegin			BRD for LTL and Motor Fuel Carrier BOL V 1.0.1 11
	loadEnd			BRD for LTL and Motor Fuel Carrier

Business Solution Design

Class (ABIE)	Attribute (BBIE)	Association (ASBIE)	Secondary Class	Related Requirements
				BOL V 1.0.1 11
	None			BRD for LTL and Motor Fuel Carrier BOL V 1.0.1 11
				BRD for LTL and Motor Fuel Carrier BOL V 1.0.1 11
MotorFuelCarrierBOLTotals				BRD for LTL and Motor Fuel Carrier BOL V 1.0.1 11
		totalVolume	Measurement	BRD for LTL and Motor Fuel Carrier BOL V 1.0.1 11
		totalWeight	Measurement	BRD for LTL and Motor Fuel Carrier BOL V 1.0.1 11
				BRD for LTL and Motor Fuel Carrier BOL V 1.0.1 11
MotorFuelCarrierDeliverLocationIn- formation				BRD for LTL and Motor Fuel Carrier BOL V 1.0.1 11
MotorFuelCarrierBillOfLading				BRD for LTL and Motor Fuel Carrier BOL V 1.0.1 11
	loadReleaseNumber			BRD for LTL and Motor Fuel Carrier BOL V 1.0.1 11
	remarks			BRD for LTL and Motor Fuel Carrier BOL V 1.0.1 11
	uniqueTrailerIdentifier			BRD for LTL and Motor Fuel Carrier BOL V 1.0.1 11
	freightTerms			BRD for LTL and Motor Fuel Carrier BOL V 1.0.1 11
	uniqueTruckIdentifier			BRD for LTL and Motor Fuel Carrier BOL V 1.0.1 11
	specialHandling			BRD for LTL and Motor Fuel Carrier BOL V 1.0.1 11
	specialServices			BRD for LTL and Motor Fuel Carrier

Business Solution Design

Class (ABIE)	Attribute (BBIE)	Association (ASBIE)	Secondary Class	Related Requirements
				BOL V 1.0.1 11
	trailerDescription			BRD for LTL and Motor Fuel Carrier BOL V 1.0.1 11
		shipFrom	MotorFuelShipFromLocation	BRD for LTL and Motor Fuel Carrier BOL V 1.0.1 11
		consignor	MotorFuelCarrierDeliveryLocationInformation	BRD for LTL and Motor Fuel Carrier BOL V 1.0.1 11
		shipTo	MotorFuelCarrierDeliveryLocationInformation	BRD for LTL and Motor Fuel Carrier BOL V 1.0.1 11
		consignee	MotorFuelCarrierDeliveryLocationInformation	BRD for LTL and Motor Fuel Carrier BOL V 1.0.1 11
		billTo	MotorFuelCarrierDeliveryLocationInformation	BRD for LTL and Motor Fuel Carrier BOL V 1.0.1 11
		customsBroker	MotorFuelCarrierDeliveryLocationInformation	BRD for LTL and Motor Fuel Carrier BOL V 1.0.1 11
	employerIdentificationNumber			BRD for LTL and Motor Fuel Carrier BOL V 1.0.1 11
		None	DeliverLocationInformation	BRD for LTL and Motor Fuel Carrier BOL V 1.0.1 11
				BRD for LTL and Motor Fuel Carrier BOL V 1.0.1 11
MotorFuelsCommodityCharacteristics				BRD for LTL and Motor Fuel Carrier BOL V 1.0.1 11
		oxygenation	Measurement	BRD for LTL and Motor Fuel Carrier BOL V 1.0.1 11
		rFG	Measurement	BRD for LTL and Motor Fuel Carrier BOL V 1.0.1 11
		rVP	Measurement	BRD for LTL and Motor Fuel Carrier BOL V 1.0.1 11

Business Solution Design

Class (ABIE)	Attribute (BBIE)	Association (ASBIE)	Secondary Class	Related Requirements
		specificGravity	Measurement	BRD for LTL and Motor Fuel Carrier BOL V 1.0.1 11
		temperature	Measurement	BRD for LTL and Motor Fuel Carrier BOL V 1.0.1 11
				BRD for LTL and Motor Fuel Carrier BOL V 1.0.1 11
MotorFuelsCommodityDescription				BRD for LTL and Motor Fuel Carrier BOL V 1.0.1 11
	blendOrAdditiveCode			BRD for LTL and Motor Fuel Carrier BOL V 1.0.1 11
	commodityDescription			BRD for LTL and Motor Fuel Carrier BOL V 1.0.1 11
	componentCode			BRD for LTL and Motor Fuel Carrier BOL V 1.0.1 11
	declaredValue			BRD for LTL and Motor Fuel Carrier BOL V 1.0.1 11
	departmentNumber			BRD for LTL and Motor Fuel Carrier BOL V 1.0.1 11
	finishedCode			BRD for LTL and Motor Fuel Carrier BOL V 1.0.1 11
		None	BillOfLadingHazardousIn- formation	BRD for LTL and Motor Fuel Carrier BOL V 1.0.1 11
		commodityClassificationCode	CommodityClassification	BRD for LTL and Motor Fuel Carrier BOL V 1.0.1 11
		None	MotorFuelsCom- modityCharacteristics	BRD for LTL and Motor Fuel Carrier BOL V 1.0.1 11
				BRD for LTL and Motor Fuel Carrier BOL V 1.0.1 11
MotorFuelShipFromLocation				BRD for LTL and Motor Fuel Carrier BOL V 1.0.1 11

Business Solution Design

Class (ABIE)	Attribute (BBIE)	Association (ASBIE)	Secondary Class	Related Requirements
	iRSTerminalControlNumber			BRD for LTL and Motor Fuel Carrier BOL V 1.0.1 11
		None	MotorFuelCarrierDeliver- LocationInformation	BRD for LTL and Motor Fuel Carrier BOL V 1.0.1 11
				BRD for LTL and Motor Fuel Carrier BOL V 1.0.1 11
ShipmentDestination				BRD for LTL and Motor Fuel Carrier BOL V 1.0.1 11
	destinationCity			BRD for LTL and Motor Fuel Carrier BOL V 1.0.1 11
	destinationCountry			BRD for LTL and Motor Fuel Carrier BOL V 1.0.1 11
	destinationSecondaryGovernmentArea			BRD for LTL and Motor Fuel Carrier BOL V 1.0.1 11
	destinationTertiaryGovernmentArea			BRD for LTL and Motor Fuel Carrier BOL V 1.0.1 11
				BRD for LTL and Motor Fuel Carrier BOL V 1.0.1 11
ShipmentSealInformation				BRD for LTL and Motor Fuel Carrier BOL V 1.0.1 11
	None			BRD for LTL and Motor Fuel Carrier BOL V 1.0.1 11
		None	PartyIdentification	BRD for LTL and Motor Fuel Carrier BOL V 1.0.1 11

Business Solution Design

1.5.2 GDD Report :

Class (ABIE)	Attribute (BBIE)	Association (ASBIE)	Secondary Class	Official Dictionary Entry Name	Definition	Multiplicity
BillOfLadingHazardous-Information				Bill Of Lading_ Hazardous Goods. Details	None	
	dangerousGoodsPackingGroup			Bill Of Lading_ Hazardous Goods. Dangerous Goods_ Packing Group. Identifier	Identifies the degree of risk these dangerous goods present during transport according to IATA/IMDG/ADR/RID regulations.	1..1
	hazardousMaterialsClass			Bill Of Lading_ Hazardous Goods. Hazardous Materials_ Class. Identifier	A code specifying the kind of hazard for a material	1..1
	hazardousMaterialsDescription			Bill Of Lading_ Hazardous Goods. Hazardous Materials_ Description. Text	Text description of hazardous goods.	1..1
	hazardousMaterialsSequenceNumber			Bill Of Lading_ Hazardous Goods. Hazardous Materials_ Sequence_ Number. Numeric	Sequence number identifying each instance of Hazardous Material associated with shipped commodity.	1..1
	shippingCommodityName			Bill Of Lading_ Hazardous Goods. Shipping_ Commodity_ Name. Text	Common name of the commodity being shipped.	1..1
	technicalCommodityName			Bill Of Lading_ Hazardous Goods. Technical_ Commodity_ Name. Text	Chemical name (chemical make-up) of the commodity being shipped.	1..1
	unitedNationsNumber			Bill Of Lading_ Hazardous Goods. United Nations_ Number. Numeric	UN classification of commodity being shipped.	1..1

Business Solution Design

Class (ABIE)	Attribute (BBIE)	Association (ASBIE)	Secondary Class	Official Dictionary Entry Name	Definition	Multiplicity
		None	Contact	Bill Of Lading_ Hazardous Goods. Association. Contact	N.A.	1..1
CarrierIdentification				Carrier_ Shipment Identification. Details	None	
	carrierPROIdentification			Carrier_ Shipment Identification. Carrier Pro Identification. Indicator	Unique number assigned by the carrier to identify the shipment.	0..1
		carrierIdentification	PartyIdentification	Carrier_ Shipment Identification. Carrier Identifier. Party Identification	n.a	1..1
CommodityClassification				Commodity Classification. Details	n.a.	
	commodityClassificationCode			Commodity Classification. Commodity Classification_ Code. Text	Code specifying the type of product being shipped. National Motor Freight Classification code is required in North America.	1..1
	commodityClassificationCodeType			Commodity Classification. Commodity Classification_ Code Type. Commodity_ Code	Code Type associated with Commodity Classification Code.	1..1
DriverInformation				Driver License. Details	n.a	
	commercialDriversLicenseNumber			Driver License. Commercial Drivers License Number_ Identification. Text	The identification number of the commercial drivers license	1..1
	driverLicenseOriginOfIssue			Driver License. Origin Of Issue_ Code. ISO3166_2_ Code	The location of the authority.	1..1

Business Solution Design

Class (ABIE)	Attribute (BBIE)	Association (ASBIE)	Secondary Class	Official Dictionary Entry Name	Definition	Multiplicity
EntityIdentification				Entity Identification. Details	The unique identification of a document.	
	uniqueCreatorIdentification			Entity Identification. Identification. Identifier	n.a	1..1
		contentOwner	PartyIdentification	Entity Identification. Content Owner. Party Identification	n.a	1..1
MotorFuelCarrier-BOLDateTime				Motor Fuel Carrier Bill Of Lading_ Date Group. Details	n.a	
	gateIn			Motor Fuel Carrier Bill Of Lading_ Date Group. Gate In_ Date Time. Date Time	The date and time the truck entered the gate.	0..1
	loadBegin			Motor Fuel Carrier Bill Of Lading_ Date Group. Load Begin_ Date Time. Date Time	The date and time the fuelling started.	0..1
	loadEnd			Motor Fuel Carrier Bill Of Lading_ Date Group. Load End_ Date Time. Date Time	The date and time the fuelling ended.	0..1
MotorFuelCarrierBillOfLading				Motor Fuel Carrier_ Bill Of Lading. Details		
	loadReleaseNumber			Motor Fuel Carrier_ Bill Of Lading. Load Release Number_ Identification. Text	Release Number for Shipment Load.	1..1
	Remarks			Motor Fuel Carrier_ Bill Of Lading. Remarks_ Text. Text	n.a	
	uniqueTrailerIdentifier			Motor Fuel Carrier_ Bill Of Lading. Unique Trailer Identifier_ Identification. Text	The trailer number as labelled on the trailer plus owners code.	1.1
	freightTerms			Motor Fuel Carrier_ Bill Of Lading	Identifies party responsi-	0..1

Business Solution Design

Class (ABIE)	Attribute (BBIE)	Association (ASBIE)	Secondary Class	Official Dictionary Entry Name	Definition	Multiplicity
				ing. Freight Terms_ Code. Deliver Payment Method_ Code	ble for paying the freight invoice.	
	uniqueTruckIdentifier			Motor Fuel Carrier_ Bill Of Lading. Unique Truck Identifier_ Identification. Text	The number identifying the conveyance unit.	0..1
	specialHandling			Motor Fuel Carrier_ Bill Of Lading. Special Handling_ Code. Shipment Special Handling_ Code	n.a	0..1
	specialServices			Motor Fuel Carrier_ Bill Of Lading. Special Service_ Code. Special Service_ Code	n.a	0..1
	trailerDescription			Motor Fuel Carrier_ Bill Of Lading. Equipment_ Type. Equipment Type_ Code	A description of the type of equipment being used.	0..1
		shipFrom	MotorFuelShipFromLocation	Motor Fuel Carrier_ Bill Of Lading. Association. Motor Fuel Ship From_ Transport Location	The physical address of where the shipment originated	1
		consignor	MotorFuelCarrierDeliverLocationInformation	Motor Fuel Carrier_ Bill Of Lading. Consignor_ Association. Motor Fuel Carrier_ Transport Location	Party requesting the shipment of the freight/goods. Party responsible for origination of Motor Carrier Bill of Lading.	0..1
		shipTo	MotorFuelCarrierDeliverLocationInformation	Motor Fuel Carrier_ Bill Of Lading. Ship To_ Association. Motor Fuel Carrier_ Transport Location	Ultimate destination where the shipment is delivered.	1..*
		consignee	MotorFuelCarrierDeliverLocationInformation	Motor Fuel Carrier_ Bill Of Lading. Consignee_ Association. Motor Fuel Carrier_ Transport Location	Party receiving the freight/goods.	0..1

Business Solution Design

Class (ABIE)	Attribute (BBIE)	Association (ASBIE)	Secondary Class	Official Dictionary Entry Name	Definition	Multiplicity
		billTo	MotorFuelCarrierDeliverLocationInformation	Motor Fuel Carrier_ Bill Of Lading. Bill To_ Association. Motor Fuel Carrier_ Transport Location	Party where freight invoice is to be sent	1..1
		customsBroker	MotorFuelCarrierDeliverLocationInformation	Motor Fuel Carrier_ Bill Of Lading. Customs Broker_ Association. Motor Fuel Carrier_ Transport Location	Party responsible for processing the shipment through customs.	0..1
MotorFuelCarrierBOLTotals				Motor Fuel Carrier_ Bill Of Lading Summary. Details	None	
		totalVolume	Measurement	Motor Fuel Carrier_ Bill Of Lading Summary. Total_ Volume_ Association. Multi-unit Measure	Total volume of the shipment. Includes Unit of Measure	0..1
		totalWeight	Measurement	Motor Fuel Carrier_ Bill Of Lading Summary. Total_ Weight_ Association. Multi-unit Measure	Total weight of the shipment. Includes Unit of Measure	0..1
MotorFuelCarrierDeliverLocationInformation				Motor Fuel Carrier_ Transport Location. Details	n.a.	
	employerIdentificationNumber			Motor Fuel Carrier_ Transport Location. Employer_ Identification_ Number. Text	A unique identifier assigned to a corporation by the Federal government for purposes of taxation. Use Federal Employer Identification Number in North America.	1..1
		None	DeliverLocationInformation	Motor Fuel Carrier_ Transport Location. Association. Deliver_ Location	n.a.	1..1

Business Solution Design

Class (ABIE)	Attribute (BBIE)	Association (ASBIE)	Secondary Class	Official Dictionary Entry Name	Definition	Multiplicity
MotorFuelsCommodityCharacteristics				Motor Fuel_ Commodity Characteristic Group. Details	None	
		oxygenation	Measurement	Motor Fuel_ Commodity Characteristic Group. Oxygenation_ Association. Multi-unit Measure	Measurement of Oxygenation Additive in shipped motor fuel	1..1
		rFG	Measurement	Motor Fuel_ Commodity Characteristic Group. RFG_ Association. Multi-unit Measure	Measurement of Reformulated Gasoline in shipped motor fuel.	1..1
		rVP	Measurement	Motor Fuel_ Commodity Characteristic Group. RVP_ Association. Multi-unit Measure	Measurement of Reid Vapour Pressure in shipped motor fuel.	1..1
		specificGravity	Measurement	Motor Fuel_ Commodity Characteristic Group. Specific Gravity_ Association. Multi-unit Measure	Measurement of Specific Gravity of shipped motor fuel.	1..1
		temperature	Measurement	Motor Fuel_ Commodity Characteristic Group. Temperature_ Association. Multi-unit Measure	n.a	1..1
MotorFuelsCommodity-Description				Motor Fuel_ Shipment Containment. Details	n.a	
	blendOrAdditiveCode			Motor Fuel_ Shipment Containment. Blended Or Additive_ Code. Blended Or Additive_ Code	A motor fuels commodity code identifier.	1..1
	commodityDescription			Motor Fuel_ Shipment Containment. Commodity Description_ Text. Text	Text description of the commodity being shipped.	1..1
	componentCode			Motor Fuel_ Shipment Containment. Component Code_ Text. Text	Code Identifying Motor Fuel Component.	1..1
	declaredValue			Motor Fuel_ Shipment Contain-	The value of the com-	0..1

Business Solution Design

Class (ABIE)	Attribute (BBIE)	Association (ASBIE)	Secondary Class	Official Dictionary Entry Name	Definition	Multiplicity
				ment. Declared_ Value. Amount	modities being shipped.	
	compartmentNumber			Motor Fuel_ Shipment Containment. Department Number_ Text. Text	Provides commodity location of shipped goods.	1..1
	finishedCode			Motor Fuel_ Shipment Containment. Finished Code_ Text. Text	A motor fuels commodity code identifier.	1..1
		None	BillOfLadingHazardousInformation	Motor Fuel_ Shipment Containment. Association. Bill Of Lading_ Hazardous Goods	n.a.	0..*
		commodityClassificationCode	CommodityClassification	Motor Fuel_ Shipment Containment. Association. Commodity Classification	Code specifying the type of product being shipped. Oil industry Common Product Code is required in North America.	1..1
		None	MotorFuelsCommodityCharacteristics	Motor Fuel_ Shipment Containment. Association. Motor Fuel_ Commodity Characteristic Group	n.a	1..1
MotorFuelShipFromLocation				Motor Fuel Ship From_ Transport Location. Details	None	
	iRSTerminalControlNumber			Motor Fuel Ship From_ Transport Location. IRS Terminal Control_ Number. Text	A unique identification number assigned to terminals	1..1
		None	MotorFuelCarrierDeliveryLocationInformation	Motor Fuel Ship From_ Transport Location. Association. Motor Fuel Carrier_ Transport Location	n.a.	1..1
ShipmentDestination				Shipment Destination_ Transport Location. Details	n.a	
	destinationCity			Shipment Destination_ Transport Location. City_ Name. Text	The city that is the final destination for a given shipment of motor fuel.	1..1
	destinationCountry			Shipment Destination_ Trans-	The country that is the	1..1

Business Solution Design

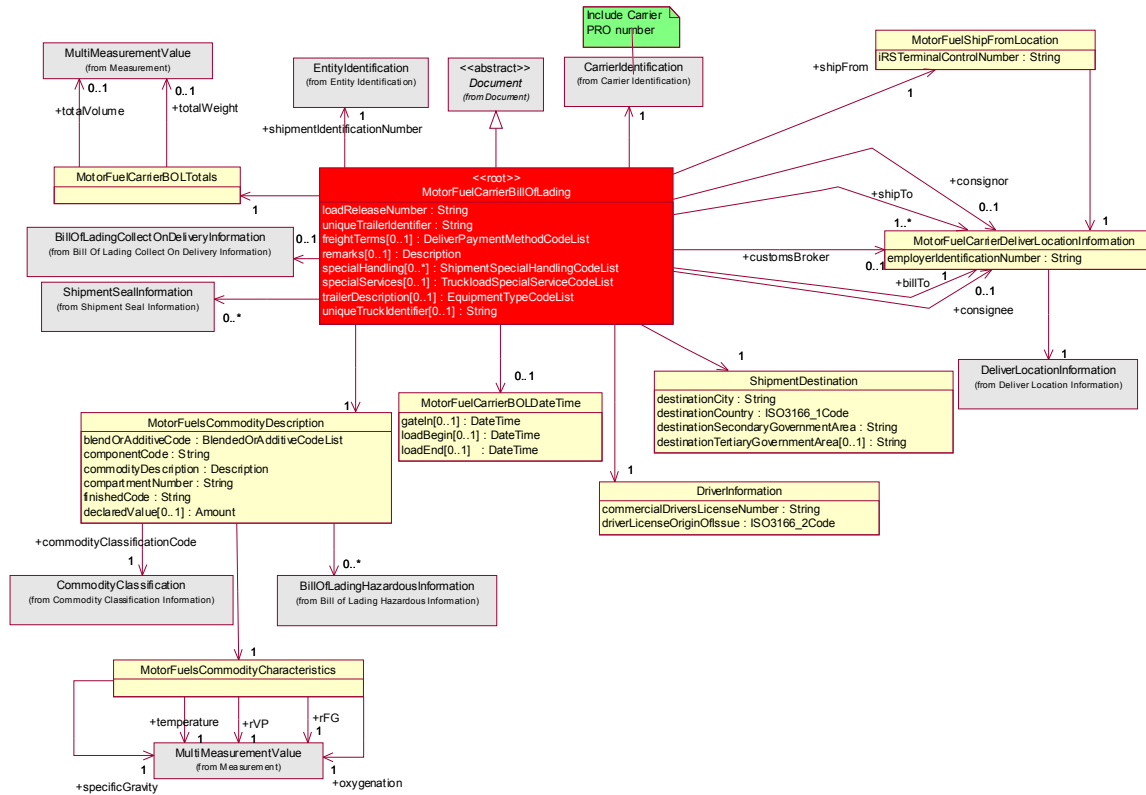
Class (ABIE)	Attribute (BBIE)	Association (ASBIE)	Secondary Class	Official Dictionary Entry Name	Definition	Multiplicity
				port Location. Country_ Code. ISO3166_1_ Code	final destination for a given shipment of motor fuel.	
	destinationSecondaryGovernmentArea			Shipment Destination_ Transport Location. Secondary_ Government Area_ Name. Text	The secondary government subdivision that is the final destination for a given shipment of motor fuel. Types of secondary government areas include province, state, lander, territory, prefecture, republic and region.	1..1
	destinationTertiaryGovernmentArea			Shipment Destination_ Transport Location. Tertiary_ Government Area_ Name. Text	The tertiary government subdivision that is the final destination for a given shipment of motor fuel. Tertiary government areas are subdivisions between a municipality and a secondary government area. Types of tertiary government areas include counties and departments.	0..1
ShipmentSealInformation				Shipment_ Seal. Details	n.a	
	sealNumber			Shipment_ Seal. Seal_ Number. Text	The number marked on the physical seal applied to a trailer.	1..1
		sealEntityIdentification	PartyIdentification	Shipment_ Seal. Seal_ Party Identification_ Association. Party	Identification of the party that applied the seal.	1..1

Business Solution Design

Class (ABIE)	Attribute (BBIE)	Association (ASBIE)	Secondary Class	Official Dictionary Entry Name	Definition	Multiplicity
				Identification		

Business Solution Design

1.5.3 Class Diagram



Business Solution Design

1.5.4 Code Lists

1.5.4.1 Blended Or Additive Code List

Code List Name	Code List Description
BlendedOrAdditiveCodeList	not available
Code Name	Code Description
24_HOUR_BLEND	not available
BLENDED_AND_CONTAINS_ADDITIVE	not available
CONTAINS_ADDITIVE	not available
CONTAINS_DETERGENT_ADDITIVE	not available
CONTAINS_IVD_DETERGENT_ADDITIVE	not available
NO_BLEND_OR_ALTERATION	not available
TRUCK_BLENDED_WITH_ANOTHER_PRODUCT	not available

1.5.4.2 Deliver Payment Method Code List

See Common BSD.

1.5.4.3 Equipment Type Code List

See Common BSD

1.5.4.4 Shipment Special Handling Code List

See Common BSD

1.5.4.5 Truckload Special Service Code List

See Common BSD

Business Solution Design

1.6 Business Document Example

Not available

1.7 Implementation Considerations

Not available

1.8 Testing

1.8.1 Pass / Fail Criteria

Number	Test Criteria	Related Requirement	Design Element	Pass Criteria	Fail Criteria
1					
2					
3					

1.8.2 Test Data

Business Solution Design

1.9 Appendices

1.10 Summary of Changes

(Details changes to BMS for each version by BMS Section)

Change	BMS Ver- sion	Associated CR Number
•		

2 XML Technical Solution ITRG Packet

The Technical Representation of the Business process is documented in a Technical Solution ITRG Packet containing all supplemental XML artefacts and is used by the Information Requirements Group (ITRG) to evaluate the solution. Upon approval from the Information Technical Requirements Group (ITRG), the Technical Solution ITRG Packet is updated to the Technical Solution Implementers Packet and published with the Business

Message Standard at:

http://www.ean-ucc.org/global_smp/ean.ucc_standards.htm.

Technical Solution ITRG Packet Content:

- Business Message Standard (BMS)
- ITRG Review Packet
 - Style Sheet: This HTML has been created using a Style Sheet that is a visual representation of the data. It is not an actual Style Sheet, but an ex-ample of what a Style Sheet may look like.
 - Instance File: The Instance File is an example of what the schema may look like when it includes live data. This can be used as comparison to a completed schema and can serve as a point of reference for development.
 - Technical Level GDD Report

Technical Solution Implementers Packet Content:

Contains all the message specific.XSD files required to implement

Example:

- AS2Envelope
- Command.xsd
- DocumentCommand.xsd
- Proxy.xsd
- ComponentLibrary.xsd

Both the Business Message Standard and the Implementers Packet are available during the ITRG Review Period in the working documents section of the ITRG eRoom:

http://eroom.uncouncil.org/eRoom/facility/InformationTechnicalAssessmentGroupITAG/0_14f7

All documents for review will be in this folder listed by name of the Change Request and Change Request Number. The Business Message Standard is not open for review, but offered as the basis for determining the suitability of the technical solutions.

This eRoom may be accessed by using the following User Name and Password:

User Name: guest

Password: guest