

# **Business Message Standard (BMS)**

**for**

**Deliver/Receiving Advice**

**BRG: Deliver**

**BMS Release: 2.0.2**

**Document Version: 3.0.2**

**Release Date: 31.03.2005**



### Change Request Reference

<b>Refer to Change Request (CR) Number(s):</b>	02-000213, 03-000043
<b>CR Submitter(s):</b>	Deliver Task Group
<b>Date of CR Submission to GSMP:</b>	14/10/2004

### Business Requirements Document (BRAD) Reference

<b>BRAD Title:</b>	BRD Receiving Advice – Business Requirement Document
<b>BRAD Date:</b>	10/12/2004
<b>BRAD Version:</b>	2.1.1

<b>BRAD Title:</b>	
<b>BRAD Date:</b>	
<b>BRAD Version:</b>	

### Document Summary

<b>Document Title:</b>	BMS for Deliver/Receiving Advice		
<b>Document Version:</b>	3.0.2		
<b>Owner:</b>	Deliver BRG		
<b>Status:</b>	(Check one box)	<input type="checkbox"/> DRAFT	<input checked="" type="checkbox"/> Approved
<b>BMS Template Version:</b>	1.0		
<b>Targeted BMS Release:</b>	2.0.2		

### Document Change History

*Note: During development include revisions in history. Upon Approval, eliminate revisions and include only delta from previous version.*

Date of Change	Version	Changed By	Reason for Change	Summary of Change	Model Build #
31/12/2004	3.0.0	Rob Toole	Completed BSD by adding GDD information and updated class diagram		N/A
31/03/2005	3.0.1	Andrew Hearn	Context Update	Updated the context listed within the document	N/A

# Business Message Standard

---

## Table of contents

---

Chapter	Page
<b>1 Business Solution .....</b>	<b>1</b>
1.1 Business Domain View.....	1
1.1.1 Problem Statement / Business Need.....	1
1.1.2 Objective.....	1
1.1.3 Audience.....	1
1.1.4 Artefacts .....	1
1.1.5 References .....	2
1.1.6 Acknowledgements .....	3
1.1.6.1 BRG Members.....	3
1.1.6.2 ITRG Members .....	4
1.1.6.3 Task/Project Group Participants ( <i>where applicable</i> ) .....	4
1.1.6.4 Design Team Members .....	4
1.2 Business Context .....	5
1.3 Additional Technical Requirements Analysis .....	5
1.3.1 Technical Requirements (optional).....	5
1.4 Business Transaction View .....	6
1.4.1 Business Transaction Use Case Diagram.....	6
1.4.2 Use Case Description.....	6
1.4.3 Business Transaction Activity Diagram(s).....	8
1.4.4 Business Transaction Sequence Diagram(s) (optional) .....	8
1.5 Information Model (including GDD Report) .....	9
1.5.1 Data Description: .....	9
1.5.2 GDD Report : .....	12
1.5.3 Class Diagrams .....	17
1.5.4 Code Lists.....	18
1.6 Business Document Example .....	19
1.7 Implementation Considerations.....	19
1.8 Testing.....	19
1.8.1 Pass / Fail Criteria .....	19
1.8.2 Test Data .....	19
1.9 Appendices.....	20
1.10 Summary of Changes.....	20

## **Business Message Standard**

---

---

### Table of contents

---

<b>2</b>	<b>XML Technical Solution ITRG Packet.....</b>	<b>21</b>
----------	--	-----------

## 1 Business Solution

### 1.1 Business Domain View

#### 1.1.1 Problem Statement / Business Need

The business process of shipping and receiving requires the actors in this process to share information regarding goods shipped and goods received. The Receiving Advice is developed to provide the receiver of the shipment the capability to inform the shipper of actual goods received, compared to what was advised as being sent. Typical business uses of the receipt information can include – updating of inventory, identifying shipping discrepancies, and adjusting orders and related invoicing.

This version of Receiving Advice, Version 2.1, was created in order to improve upon the existing Receiving Advice (Version 1.0.2 of June 30, 2003), which is only an acknowledgement of goods received (proof of delivery) from a Receiver to a Shipper. The Receiving Advice should have the capability to link to the information that makes up a Despatch Advice or Shipping Document, which provides detailed information about the content of a shipment of goods from the Shipper to the Receiver. With the capability of this link comes the ability to compare exactly what was received to what was indicated as sent on the Despatch Advice or Shipping Document. The established link between receipt and despatch information enables the comparison and in turn allows the Receiving Advice to contain a range of comparison information, from general to specific.

#### 1.1.2 Objective

The objective of the Receiving Advice is to satisfy the business need as stated in section 1.1 above as well as to provide a format that is flexible to serve the actors' process goals based on trading partner agreements.

For example, the Receiving Advice can be used in correlation with the Despatch Advice or other shipment documentation to:

- Provide a simple acknowledgment that goods have been received
- Provide a detailed verification of actual goods received
- Provide notification of exceptions between shipment documentation (e.g. Despatch Advice and BOL) and actual receipts

#### 1.1.3 Audience

Retailers, manufacturers, warehouses, material suppliers and any other third party such as a logistic service or 3PL provider involved in the despatch and receipt of goods.

#### 1.1.4 Artefacts

*(List of the artefacts that are used as either an input to the process or an output from the process, also indicating the different states that the artefact takes during the process.)*

Artefact name	Artefact description
Deliver BRG approved Core Despatch Advice BRD, Version 1.2, April 2003	
Receiving Advice BRD, Version 1.0.2, 30 June 2003	
Core Despatch Advice – ITRG approved Business Message Standard, Version 1.3.1 November 2003	
BRW 0.4 dated December 08, 2003 to create Receiving Advice BRD	

## Business Solution Design

---

---

--	--

### 1.1.5 References

Reference Name	Description
Change Request #02-000213	

## Business Solution Design

---

---

### 1.1.6 Acknowledgements

*(List of the individuals—and their companies—who participated in the creation, review and approval of this BMS.)*

#### 1.1.6.1 BRG Members

function	Name	Company / organisation
BRG Co-chair	Debra Noyes	Johnsonville Sausage
BRG Co-chair	Sue Donarski	Schneider Logistics
BRG Member	Regina De Baker	Watkins
BRG Member	Shanda Marvin	Procter & Gamble
BRG Member	Mike Osiecki	Best Buy Company
BRG Member	Roman Gural	UPS
BRG Member	Wayne Gingerich	Werner Enterprises
BRG Member	Paul Martin	General Mills
BRG Member	Kari Melhus	Target Corporation
BRG Member	Jeff Miller	Kraft Foods, Inc.
BRG Member	Bob Robertson	Manhattan Associates
BRG Member	David Burns	INTTRA
BRG Member	Marco Van Der Lee	EAN Netherlands
BRG Member	Apostolos Xiradakis	Unilever
BRG Member	Thorsten Kirschner	CCG (EAN Germany)
BRG Member	Jean François Fusco	Geodis Solution
BRG Member	Aart Koning	Albert Heijn
BRG Member	José Jean-Paul Tavares	EAN Brazil
BRG Member	Jeoffrey Cubillos	IBC Solutions
BRG Member	Tamari Tashiro	DCC (EAN Japan)
BRG Member	Tan Jin Soon	SANC (EAN Singapore)
BRG Manager	Bruno Julien	Gencod EAN France

### 1.1.6.2 ITRG Members

Function	Name	Company / organisation
DTG Co-Chair	Debra Noyes	Johnsonville Sausage
DTG Co-Chair	Mike Osiecki	Best Buy Company
Participant	Regina De Baker	Watkins
Participant	Dean Yuhas	Millard Refregeration
Participant	Sue Donarski	Schneider Logistics
Participant	Paul Martin	General Mills
Participant	Kari Melhus	Target Corporation
Participant	Jeff Miller	Kraft Foods, Inc.
Participant	Franck Napoli	LMI
Participant	David Burns	INTTRA
Participant	Marco Van Der Lee	EAN Netherlands
Participant	Apostolos Xiradakis	Unilever
Participant	Fred Kempkes	Unilever
Participant	Thorsten Kirschner	CCG (EAN Germany)
Participant	Jean François Fusco	Geodis Solution
Participant	Aart Koning	Albert Heijn
Participant	Tan Jin Soon	SANC (EAN Singapore)
Participant	Bruno Julien	Gencod EAN France

### 1.1.6.3 Task/Project Group Participants (*where applicable*)

Function	Name	Company / organisation
DTG Co-Chair	Debra Noyes	Johnsonville Sausage
DTG Co-Chair	Mike Osiecki	Best Buy Company
Participant	Regina De Baker	Watkins
Participant	Dean Yuhas	Millard Refregeration
Participant	Sue Donarski	Schneider Logistics
Participant	Paul Martin	General Mills
Participant	Kari Melhus	Target Corporation
Participant	Jeff Miller	Kraft Foods, Inc.
Participant	Franck Napoli	LMI
Participant	David Burns	INTTRA
Participant	Marco Van Der Lee	EAN Netherlands
Participant	Apostolos Xiradakis	Unilever
Participant	Fred Kempkes	Unilever
Participant	Thorsten Kirschner	CCG (EAN Germany)
Participant	Jean François Fusco	Geodis Solution
Participant	Aart Koning	Albert Heijn
Participant	Tan Jin Soon	SANC (EAN Singapore)
Participant	Bruno Julien	Gencod EAN France

### 1.1.6.4 Design Team Members

Function	Name	Organisation
Modeller	Rob Toole	UCC
XML Technical Designer		
EANCOM Technical Designer		
Peer Reviewer	John Ryu	UCC



# Business Solution Design

---

---

## 1.2 Business Context

*(Note: The business context of the business)*

Context Category	Value(s)
Industry	All
Geopolitical	All
Product	All
Process	Deliver
System Capabilities	EAN.UCC
Official Constraints	None

## 1.3 Additional Technical Requirements Analysis

### 1.3.1 Technical Requirements (optional)

*(User Interface, Security, Performance, Quality, etc.)*

Number	Statement	Rationale

## Business Solution Design

---



---

### 1.4 Business Transaction View

When the Receiver receives a shipment of goods from the Shipper, the Receiver compares the received goods to what was advised as despatched on the despatch advice or shipping documents, and creates and sends a Receiving Advice. The Receiver has the following options to choose from regarding what the Receiving Advice may contain:

- full –details- Includes qualitative and/or quantitative details regarding everything received (all line items) whether or not there were exceptions between what was received and what was advised as being sent.
- exceptions – Includes only qualitative and/or quantitative exceptions between what was received and what was advised as being sent.
- confirmation- The acceptance of the receipt of goods.

#### 1.4.1 Business Transaction Use Case Diagram

Not available

#### 1.4.2 Use Case Description

<b>Use Case ID</b>	UC-1												
<b>Use Case Name</b>	Create and Send Receiving Advice												
<b>Use Case Description</b>	Describes a complete process whereby a Receiver generates a Receiving Advice based on information gained from received goods and physical or electronic documents from a Shipper.												
<b>Actors (Goal)</b>	Receiver and Shipper												
<b>Performance Goals</b>	None												
<b>Preconditions</b>	Master data alignment of locations (GLNs) and products (GTINs).												
<b>Post conditions</b>	Indication of exceptions, full-detailed comparison or confirmation between goods received and goods advised as despatched.												
<b>Scenario</b>	<p><b>Begins when</b> the Receiver receives a shipment of goods accompanied or preceded by the Despatch Advice or Shipping Documents</p> <p><b>Continues with...</b></p> <table border="1"> <thead> <tr> <th>Step #</th> <th>Actor</th> <th>Activity Step</th> </tr> </thead> <tbody> <tr> <td>1</td> <td></td> <td></td> </tr> <tr> <td>2</td> <td></td> <td></td> </tr> <tr> <td>3</td> <td></td> <td></td> </tr> </tbody> </table> <p><b>Ends when</b> the Receiver compares the received goods (as well as qualitative properties) to what was advised as being sent on the despatch advice or shipping documents.</p> <p>Receiving Advice will include full details OR exceptions OR a confirmation of the received goods compared to what was advised as being despatched on the despatch advice or shipping documents.</p>	Step #	Actor	Activity Step	1			2			3		
Step #	Actor	Activity Step											
1													
2													
3													
<b>Alternative Scenario</b>	<i>(any alternatives to the above scenario)</i>												

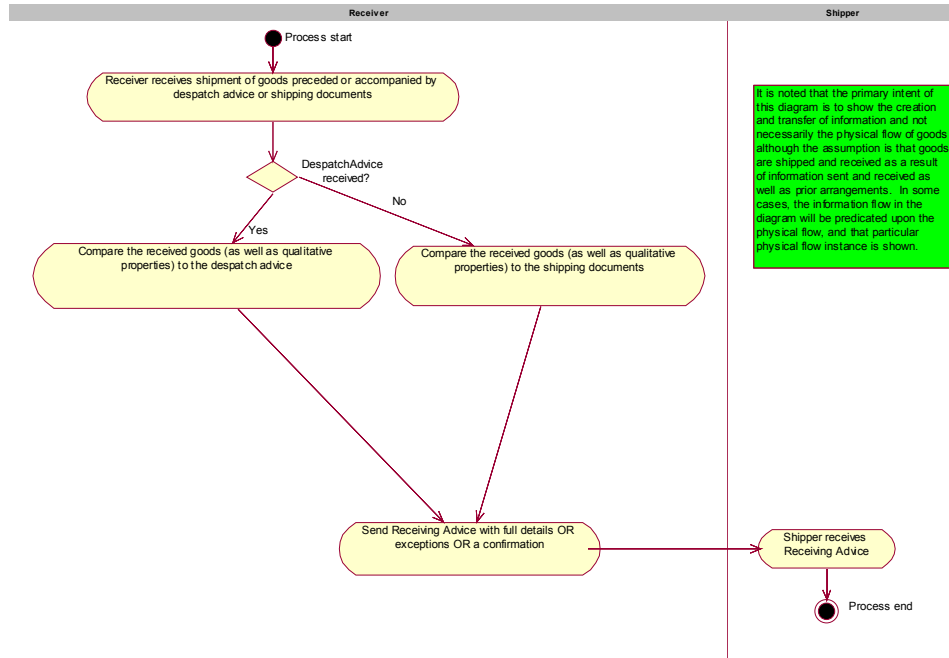
## Business Solution Design

---

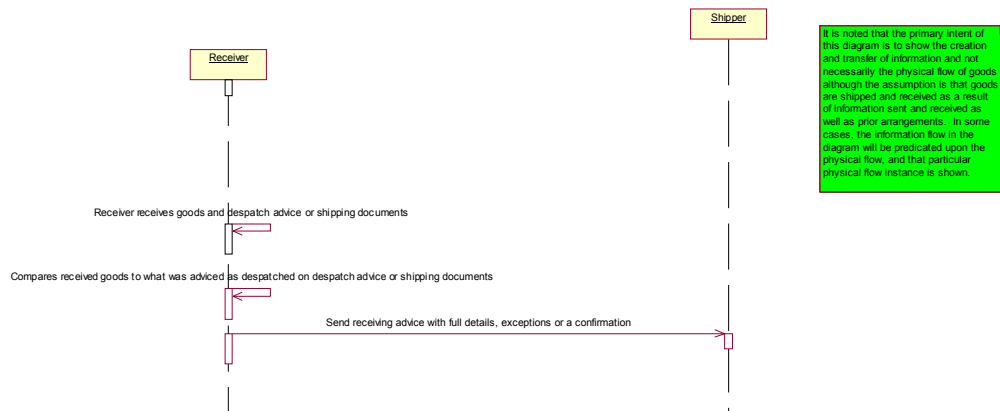
---

	Step #	Actor	Activity Step
Related Requirements	1		
Related Rules			

## 1.4.3 Business Transaction Activity Diagram(s)



## 1.4.4 Business Transaction Sequence Diagram(s) (optional)



## Business Solution Design

### 1.5 Information Model (including GDD Report)

#### 1.5.1 Data Description:

Class (ABIE)	Attribute (BBIE)	Association (ASBIE)	Secondary Class	Related Requirements
ReceivedItem				BRD Receiving Advice V 2.1.1 12.10.2004
		tradeltemsReceived	ReceivingAdviceTradeltemInformation	BRD Receiving Advice V 2.1.1 12.10.2004
		<<choice>>	TradeltemUnit	BRD Receiving Advice V 2.1.1 12.10.2004
		<<choice>>	LogisticUnits	BRD Receiving Advice V 2.1.1 12.10.2004
TradeltemUnit				BRD Receiving Advice V 2.1.1 12.10.2004
LogisticUnits				BRD Receiving Advice V 2.1.1 12.10.2004
				BRD Receiving Advice V 2.1.1 12.10.2004
Document				BRD Receiving Advice V 2.1.1 12.10.2004
	contentVersion			BRD Receiving Advice V 2.1.1 12.10.2004
	creationDate			BRD Receiving Advice V 2.1.1 12.10.2004
	documentStatus			BRD Receiving Advice V 2.1.1 12.10.2004
	documentStructureVersion			BRD Receiving Advice V 2.1.1 12.10.2004
	lastUpdateDate			BRD Receiving Advice V 2.1.1 12.10.2004
				BRD Receiving Advice V 2.1.1 12.10.2004
EntityIdentification				BRD Receiving Advice V 2.1.1 12.10.2004
	uniqueCreatorIdentification			BRD Receiving Advice V 2.1.1 12.10.2004
		contentOwner	PartyIdentification	BRD Receiving Advice V 2.1.1 12.10.2004
				BRD Receiving Advice V 2.1.1 12.10.2004
LineItem				BRD Receiving Advice V 2.1.1 12.10.2004
	Number			BRD Receiving Advice V 2.1.1 12.10.2004
				BRD Receiving Advice V 2.1.1 12.10.2004

## Business Solution Design

LogisticUnits				BRD Receiving Advice V 2.1.1 12.10.2004
	Identification			BRD Receiving Advice V 2.1.1 12.10.2004
		itemsContained	ItemContainment	BRD Receiving Advice V 2.1.1 12.10.2004
				BRD Receiving Advice V 2.1.1 12.10.2004
MeasurementValue				BRD Receiving Advice V 2.1.1 12.10.2004
	measurementValue			BRD Receiving Advice V 2.1.1 12.10.2004
				BRD Receiving Advice V 2.1.1 12.10.2004
PartyIdentification				BRD Receiving Advice V 2.1.1 12.10.2004
	globalLocationNumber			BRD Receiving Advice V 2.1.1 12.10.2004
		N/A	AdditionalPartyIdentification	BRD Receiving Advice V 2.1.1 12.10.2004
				BRD Receiving Advice V 2.1.1 12.10.2004
ReceivingAdvice				BRD Receiving Advice V 2.1.1 12.10.2004
	reportingCode			BRD Receiving Advice V 2.1.1 12.10.2004
		N/A	N/A	BRD Receiving Advice V 2.1.1 12.10.2004
		N/A	Document	BRD Receiving Advice V 2.1.1 12.10.2004
		receivingAdviceIdentification	EntityIdentification	BRD Receiving Advice V 2.1.1 12.10.2004
		carrier	PartyIdentification	BRD Receiving Advice V 2.1.1 12.10.2004
		shipper	PartyIdentification	BRD Receiving Advice V 2.1.1 12.10.2004
		receiver	PartyIdentification	BRD Receiving Advice V 2.1.1 12.10.2004
		shipTo	PartyIdentification	BRD Receiving Advice V 2.1.1 12.10.2004
		N/A	shipmentDetails	BRD Receiving Advice V 2.1.1 12.10.2004
				BRD Receiving Advice V 2.1.1 12.10.2004
ReceivingAdviceTradeItemInformation				BRD Receiving Advice V 2.1.1 12.10.2004
	receivingCondition			BRD Receiving Advice V 2.1.1 12.10.2004
		quantityAccepted	MeasurementValue	BRD Receiving Advice V 2.1.1 12.10.2004
		quantityDespatched	MeasurementValue	BRD Receiving Advice V 2.1.1 12.10.2004
		quantityReceived	Measurement	BRD Receiving Advice V 2.1.1 12.10.2004

## Business Solution Design

---

				BRD Receiving Advice V 2.1.1 12.10.2004
shipmentDetails				BRD Receiving Advice V 2.1.1 12.10.2004
	despatchAdvice- DateTime			BRD Receiving Advice V 2.1.1 12.10.2004
	despatchAdviceDeliv- eryDateTime			BRD Receiving Advice V 2.1.1 12.10.2004
	despatchAdviceNumber			BRD Receiving Advice V 2.1.1 12.10.2004
	receivingDateTime			BRD Receiving Advice V 2.1.1 12.10.2004
	shipmentIdentification			BRD Receiving Advice V 2.1.1 12.10.2004

## Business Solution Design

### 1.5.2 GDD Report :

(Output from GDD should be pasted in this section.)

Class (ABIE)	Attribute (BBIE)	Association (ASBIE)	Secondary Class	Official Dictionary Entry Name	Definition	Multiplicity
ReceivedItem				ReceivedItem.Details	N/A	
		tradeltemsReceived	ReceivingAdviceTradeltemInformation	ReceivedItem.tradeltemsReceived.ReceivingAdviceTradeltemInformation	N/A	1..*
		N/A	TradeltemUnit	N/A	<<choice>>	1..1
		N/A	LogisticUnits	N/A	<<choice>>	1.1
TradeltemUnit				N/A	N/A	
LogisticUnits				N/A	N/A	
Document				Electronic_Document.Details	Used to specify basic information about the content of the message including version number, creation date and time.	
	contentVersion			Electronic_Document.Content_Version.Identifier	N/A	0..1
	creationDate			Electronic_Document.Creation_Date.Date Time	N/A	1..1
	documentStatus			Electronic_Document.Status.Identifier	Indicates if the document is a copy or an original.	1..1



## Business Solution Design

	documentStructureVersion			Electronic_Document. Document Structure_Version. Identifier	N/A	0..1
	lastUpdateDate			Electronic_Document. Last Update_Date. Date Time	N/A	0..1
EntityIdentification				Entity Identification. Details	The unique identification of a document.	
	uniqueCreatorIdentification			Entity Identification. Identification. Identifier	N/A	1..1
		contentOwner	PartyIdentification	Entity Identification. Content Owner. Party Identification	N/A	1..1
LineItem				Line Item. Details	N/A	
	Number			Line Item. Number. Integer_Numeric	N/A	1..1
LogisticUnits				Logistic Unit. Details	Used to specify the serial and the Serial Shipping Container Code (SSCC) when defining the item contents of a single despatch unit (mixed pack). This class is not used in the (standard pack) hierarchy.	
	Identification			Logistic Unit. Identification. SSCC_Identifier	A globally unique identifier assigned to a logistics unit.	1..1
		itemsContained	ItemContainment	Logistic Unit. Content. Despatch Item	N/A	1..*

## Business Solution Design

MeasurementValue				Multi-unit Measure. Details	N/A	
	measurementValue			Multi-unit Measure. Measure	N/A	1..*
PartyIdentification				Party Identification. Details	Unique location number identifying the Party for which the rest of the message defines.	
	globalLocationNumber			Party Identification. Primary_ Identification. GLN_ Identifier	N/A	1..1
		N/A	AdditionalPartyIdentification	Party Identification. Additional. Non GLN_ Party Identification	N/A	0..*
ReceivingAdvice				Receiving Advice. Details	This is the root class for the Receiving Advice Message.	
	reportingCode			Receiving Advice. Reporting_ Code. Reporting_ Code	N/A	1..1
		N/A	N/A	Receiving Advice. Association. Receiving Advice Line	N/A	1..*
		N/A	Document	Receiving Advice. Inheritance_ Association. Electronic_ Document	N/A	1..1
		receivingAdviceIdentification	EntityIdentification	Receiving Advice. Receiving Advice Identification. Entity Identification	N/A	1..1
		carrier	PartyIdentification	Receiving Advice. Carrier. Party Identification	Carrier charged with delivery of goods.	0..*

## Business Solution Design

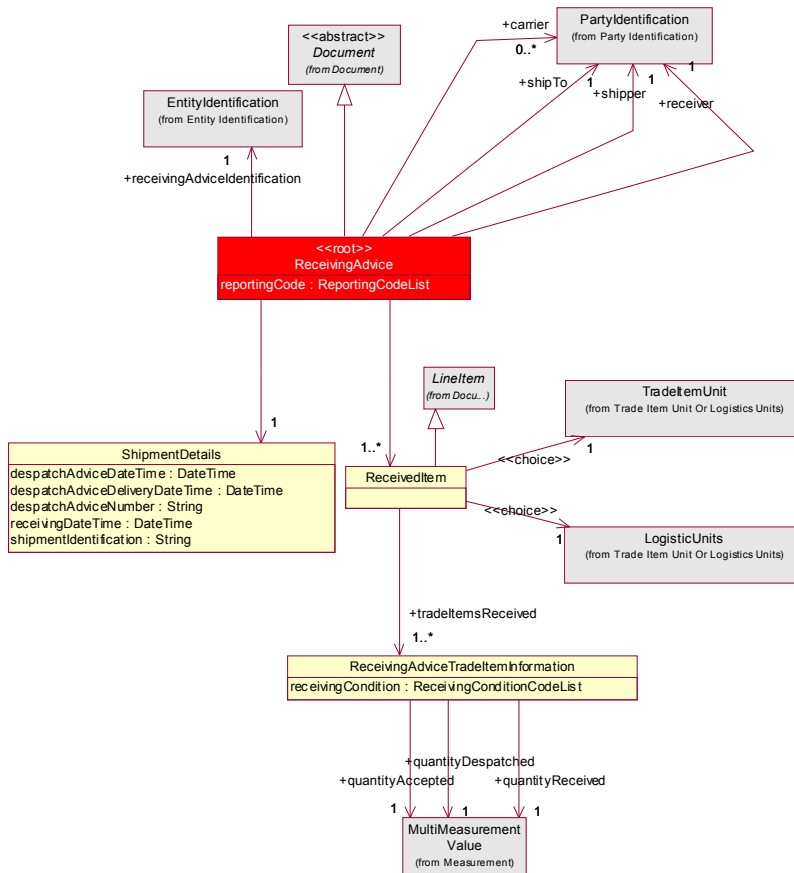
		shipper	PartyIdentification	Receiving Advice. Consignor. Party Identification	N/A	1..1
		receiver	PartyIdentification	Receiving Advice. Receiver. Party Identification	A party who engages in receiving goods	1..1
		shipTo	PartyIdentification	Receiving Advice. Ship To. Party Identification	Identification of the location to where goods will be or have been shipped.	1..1
		N/A	shipmentDetails	Receiving Advice. Association. Actual_Shipment	N/A	1..1
ReceivingAdviceTradeItemInformation				Receiving Advice Sub Line. Details	N/A	
	receivingCondition			Receiving Advice Sub Line. Receiving Condition. Code	N/A	0..*
		quantityAccepted	MeasurementValue	Receiving Advice Sub Line. Accepted_Quantity. Multi-unit Measure	N/A	1..1
		quantityDespatched	MeasurementValue	Receiving Advice Sub Line. Despatched_Quantity. Multi-unit Measure	N/A	1..1
		quantityReceived	Measurement	Receiving Advice Sub Line. Received_Quantity. Multi-unit Measure	N/A	1..1
shipmentDetails				Actual_Shipment.	This class provides for the reporting of the	

## Business Solution Design

				Details	shipment details which includes the receiving date, consignor shipment identification and optional purchase order identification. This class is mandatory. This class has two attributes. - Consignor Shipment	
	despatchAdvice- DateTime			Actual_ Shipment. Despatch Advice_ Date. Date Time	N/A	1..1
	despatchAdviceDe- liveryDateTime			Actual_ Shipment. Despatch Advice Delivery_ Date. Date Time	N/A	1..1
	despatchAd- viceNumber			Actual_ Shipment. Identification. Text	N/A	1..1
	receivingDateTime			Actual_ Shipment. Receiving_ Date. Date Time	N/A	1..1
	shipmentIdentification			Actual_ Shipment. Shipment_ Identifica- tion. Identifier	N/A	1..1

# Business Solution Design

## 1.5.3 Class Diagrams



## Business Solution Design

---

---

### 1.5.4 Code Lists

Code List Name	Code List Description
ReportingCodeList	ReceivingAdvice has a ReportingCodeList it uses to select reporting codes. ReportingCodeList contains an enumerated list that allows the ReceivingAdvice class to select the type of content the Receiving Advice will contain.
Code Name	Code Description
CONFIRMATION	N/A
EXCEPTIONS	N/A
FULL_DETAILS	N/A

Code List Name	Code List Description
ReceivingConditionCodeList	ReceivingAdviceTradeItemInformation has a ReceivingConditionCodeList it uses to select receiving condition codes. ReceivingConditionCodeList contains an enumerated list that allows the ReceivingAdviceTradeItemInformation class to select qualitative and/or quantitative descriptive codes to be used in a comparison for ultimate use in the ReceivingAdvice message.
Code Name	Code Description
ACCEPTED_IN_FULL	N/A
DAMAGED_PRODUCT_OR_CONTAINER	N/A
GOOD_CONDITION	N/A
HOLD	N/A
INCORRECT_PRODUCT	N/A
MATERIAL_SCRAPPED	N/A
NON_STANDARD_CONTAINER	N/A
NOT_RECEIVED_SERIAL_NUMBER_REQUIRED	N/A
QUALITY_PROBLEM	N/A
QUANTITY_OVER	N/A
QUANTITY_OVER_RETURN_TO_SUPPLIER	N/A
QUANTITY_RECEIVED_CANNOT_PROCESS_BECAUSE_NO_MATCHING_SERIAL_NUMBER	N/A
QUANTITY_RECEIVED_PROCESSED_WITH_NO_MATCHING_SERIAL_NUMBER	N/A
QUANTITY_SHORT	N/A
REJECTED	N/A

## Business Solution Design

---

---

### 1.6 Business Document Example

- Receiver has electronic Despatch Advice or Shipping Documents prior to receipt of goods or simultaneously.
- Received goods are manually or automatically counted; count entered manually or automatically in system.
- Processing within system of count and quality of received goods compared to what was advised as despatched on Despatch Advice or Shipping Documents by line item.
- Receiving Advice created based on results of comparison (creation made possible by structure of class diagram built into system). Receiving Advice contains full details, exceptions or confirmation.
- Receiving Advice sent from Receiver to Shipper.

### 1.7 Implementation Considerations

Not available

### 1.8 Testing

#### 1.8.1 Pass / Fail Criteria

Number	Test Criteria	Related Requirement	Design Element	Pass Criteria	Fail Criteria
1					
2					
3					

#### 1.8.2 Test Data

Attribute	Value

## Business Solution Design

---

---

### 1.9 Appendices

#### 1.10 Summary of Changes

*(Details changes to BMS for each version by BMS Section)*

Change	BMS Version	Associated CR Number



### 2 XML Technical Solution ITRG Packet

The Technical Representation of the Business process is documented in a Technical Solution ITRG Packet containing all supplemental XML artefacts and is used by the Information Requirements Group (ITRG) to evaluate the solution. Upon approval from the Information Technical Requirements Group (ITRG), the Technical Solution ITRG Packet is updated to the Technical Solution Implementers Packet and published with the Business

Message Standard at:

[http://www.ean-ucc.org/global\\_smp/ean.ucc\\_standards.htm](http://www.ean-ucc.org/global_smp/ean.ucc_standards.htm).

Technical Solution ITRG Packet Content:

- Business Message Standard (BMS)
- ITRG Review Packet
  - Style Sheet: This HTML has been created using a Style Sheet that is a visual representation of the data. It is not an actual Style Sheet, but an ex-ample of what a Style Sheet may look like.
  - Instance File: The Instance File is an example of what the schema may look like when it includes live data. This can be used as comparison to a completed schema and can serve as a point of reference for development.
  - Technical Level GDD Report

Technical Solution Implementers Packet Content:

Contains all the message specific.XSD files required to implement

Example:

- AS2Envelope
- Command.xsd
- DocumentCommand.xsd
- Proxy.xsd
- ComponentLibrary.xsd

Both the Business Message Standard and the Implementers Packet are available during the ITRG Review Period in the working documents section of the ITRG eRoom:

[http://eroom.uncouncil.org/eRoom/facility/InformationTechnicalAssessmentGroupITAG/0\\_14f7](http://eroom.uncouncil.org/eRoom/facility/InformationTechnicalAssessmentGroupITAG/0_14f7)

All documents for review will be in this folder listed by name of the Change Request and Change Request Number. The Business Message Standard is not open for review, but offered as the basis for determining the suitability of the technical solutions.

This eRoom may be accessed by using the following User Name and Password:

User Name: guest

Password: guest