

Business Message Standard (BMS)

for

Align_Office_Supplies_Extension

(Process/Sub-process/Industry and/or Product/Geopolitical)

BRG: Align

BMS Release: __2.1__

Version: __1.0.1__

(r stands for revision number of a version)

Date: __04.06.2007__

(dd.mm.cyy example 27.10.2004)



Change Request Reference

Refer to Change Request (CR) Number(s):	04-000129
CR Submitter(s):	UCCnet Office Supplies data Attributes Committee
Date of CR Submission to GSMP:	06/14/2004

Business Requirements Document (BRAD) Reference

BRAD Title: BRAD Data Alignment for Office Supplies
BRAD Date: 18.05.2005
BRAD Version: 0.0.6

BRAD Title:
BRAD Date:
BRAD Version:

Document Summary

Document Title:	BMS_Align_Office_Supplies_Extension
Document Version	1.0.1
Owner:	GDSN BRG
Status:	<input type="checkbox"/> DRAFT <input checked="" type="checkbox"/> Approved
BMS Template Version:	1.1
Targeted BMS Publication Version	2.1

Document Change History

Note: During development include revisions in history. Upon Approval, eliminate revisions and include only delta from previous version.

Date of Change	Version	Changed By	Reason for Change	Summary of Change	Model Build #
22.07.2005	0.0.1	Eric Kauz	Initial Draft		7184
15.08.2005	0.0.2	Eric Kauz	Peer Review	<ul style="list-style-type: none"> Corrected Sample Data Corrected Formatting Issues Added definitions for code list values for RightOfReturn-ForNonSold- 	

				TradeItem Code List and FMCGTradeItemIdentification Code List.	
08.11.2005	0.0.3	Eric Kauz	Public Review Feedback	<ul style="list-style-type: none"> Added isTradeItemRecalled, modelNumber, unitsPerTradeItem, Warranty-Information. 	
06.12.2005	0.0.4	Eric Kauz	ITRG Review	<ul style="list-style-type: none"> Changed post-ConsumerRecycledMaterialContentPercentage to mandatory. Changed isTradeItemRecalled to optional. 	
17.11.2006	0.0.5	Eric Kauz	CR 06-000262	<ul style="list-style-type: none"> Replacement of Candidate Attribute. 	
20.01.2007	1.0.0	Eric Kauz	Comment Review.	<ul style="list-style-type: none"> Changed post-ConsumerRecycledMaterialContentPercentage totalRecyclableContentPercentage, componentNumber and totalNumberOfComponents to have data types of non-negative integer. 	
02.04.2007	1.0.1	Giovanni Biffi	Added Code Values to the RightOfReturnForNonSoldTradeItem Code List	<ul style="list-style-type: none"> New code values requested on CR 06-000181 	

Business Message Standard

Table of contents

Chapter	Page
1 Business Solution	6
1.1 Business Domain View.....	6
1.1.1 Problem Statement / Business Need.....	6
1.1.2 Objective.....	6
1.1.3 Audience.....	6
1.1.4 Artefacts	6
1.1.5 References	6
1.1.6 Acknowledgements	7
1.1.6.1 BRG Members	7
1.1.6.2 ITRG Members	8
1.1.6.3 Task/Project Group Participants (<i>where applicable</i>)	8
1.1.6.4 Design Team Members	8
1.2 Business Context	9
1.3 Additional Technical Requirements Analysis	9
1.3.1 Technical Requirements (optional).....	9
1.4 Business Transaction View	10
1.4.1 Business Transaction Use Case Diagram.....	10
1.4.2 Use Case Description.....	10
1.4.3 Business Transaction Activity Diagram(s).....	11
1.4.4 Business Transaction Sequence Diagram(s) (optional)	11
1.5 Information Model (including GDD Report)	12
1.5.1 Data Description:.....	12
1.5.2 GDD Report :.....	14
1.5.3 Class Diagrams	22
1.5.3.1 Office Supplies Trade Item Extension	22
1.5.4 Code Lists.....	25
1.6 Business Document Example	26
1.7 Implementation Considerations.....	26
1.8 Testing.....	26
1.8.1 Pass / Fail Criteria	26
1.8.2 Test Data	26
1.9 Appendices.....	27

Business Message Standard

Table of contents

1.10 Summary of Changes.....	27
2 Technical Solution Design	28

1 Business Solution

1.1 Business Domain View

1.1.1 Problem Statement / Business Need

There is a need in the office supplies industry to exchange information on trade items. When most of the requirements are already covered in the Data Alignment messages, some specific requirements still have to be addressed.

This extension covers all office supplies industry requirements described in the BRAD Data Alignment for Office Supplies. This document covers all the items needed to work in an office.

The following categories of trade items are concerned:

- Paper and anything related to paper (writing instruments, glue, staplers, etc.)
- Office furniture (desks, cupboards, lamps, etc.)
- Computers, peripherals and consumables (printers, toner, mice, etc.).
- Communication trade items (telephones, faxes, etc.).

1.1.2 Objective

The creation of a new extension including attributes and code list values already existing in the hardlines model as well as the needs of the office supplies industry.

1.1.3 Audience

The audience of the standards would be any participant in the global supply chain. This would include retailers, manufacturers, service providers and other third parties.

1.1.4 Artefacts

Not Applicable

1.1.5 References

Reference Number	Reference Name	Description
1	BRAD Data Alignment for Office Supplies: Version: 0.0.6	Extended Item Attribute requirements for the Office Supplies Industry Sector
2	BRAD For GDSN Item Maintenance Release 1: Version: 0.0.2	Updated business rules and definitions around the Align Trade Item Standard

1.1.6 Acknowledgements

1.1.6.1 BRG Members

Function	Name	Company / organisation
BRG Chair	Jim Funk	S.C. JOHNSON & SON, INC.
BRG Chair	Vic Hansen	UNLIVER – LEVER FABERGE LTD.
BRG Chair	Eduardo Tovar	PROCTER & GAMBLE COMPANY
BRG Member		
BRG Member	Javier Arias	GS1 SPAIN
BRG Member	Neale Austen	EAN AUSTRALIA
BRG Member	Michael Bammer	CVS PHARMACY, INC.
BRG Member	Giovanni Biffi	IAC – EAN COLOMBIA
BRG Member	Loek Boortman	GS1 NEDERLAND
BRG Member	Benjamin Couty	GS1 France
BRG Member	MaryAnn Goodrich	UNILVER HOME & PERSONAL CARE NA
BRG Member	Hideki Ichihara	EAN JAPAN
BRG Member	Nancy Laskero	SEARS, ROEBUCK AND CO
BRG Member	Hanjoerg Lerch	METRO GROUP BUYING GMBH
BRG Member	Markus Mathar	SINFOS GMBH
BRG Member	Roberto Matsubayashi	EAN BRASIL
BRG Member	Alistair McArthur	ALLIED DOMECQ SPIRITS & WINE LTD
BRG Member	Michael Moise	NESTLE AG
BRG Member	Olivier Mouton	CARREFOUR
BRG Member	Barbara Munro	KRAFT FOODS, INC
BRG Member	Anakaryna Palacios	EAN VENEZUELA
BRG Member	Hector German Piñeros	IBC SOLUTIONS COLOMBIA
BRG Member	Paul Povey	PROCTER & GAMBLE COMPANY
BRG Member	Rebecca Quigley	COCA-COLA BOTTLERS SALES AND SERVICES
BRG Member	Julie Rodriguez	LEVI STRAUSS & CO
BRG Member	Joy Schneck	GENERAL MILLS, INC.
BRG Member	Peggy Spofford	3M COMPANY
BRG Member	Steve Vazzano	TRANSORA
BRG Member	Lionel Tussau	GEORGIA-PACIFIC CORPORATION
BRG Member	Patricia Vessey	BEST BUY COMPANY, INC.
BRG Member	Marcel Yska	AHOLD NV
BRG Member	Greg Zwanziger	SUPERVALU, INC.

1.1.6.2 ITRG Members

Function	Name	Company / organisation
ITRG Member	Not Applicable	

1.1.6.3 Task/Project Group Participants (*where applicable*)

Function	Name	Company / organisation
Participant	Not Applicable	

1.1.6.4 Design Team Members

Function	Name	Organisation
Modeller	Eric Kauz	GS1
XML Technical Designer	Dipan Anarkat	GS1
EANCOM Technical Designer		
Peer Reviewer	John Ryu	GS1

Business Solution Design

1.2 Business Context

(Note: The business context of the business)

Context Category	Value(s)
Industry	Office Supplies
Geopolitical	All
Product	All
Process	Align_Item
System Capabilities	EAN.UCC
Official Constraints	None

1.3 Additional Technical Requirements Analysis

1.3.1 Technical Requirements (optional)

Number	Statement	Rationale
	Not Applicable	

1.4 Business Transaction View

1.4.1 Business Transaction Use Case Diagram

Not Applicable

1.4.2 Use Case Description

Not Applicable

1.4.3 Business Transaction Activity Diagram(s)

None

1.4.4 Business Transaction Sequence Diagram(s) (optional)

None

Business Solution Design

1.5 Information Model (including GDD Report)

1.5.1 Data Description:

Office Supplies Trade Item Extension

Class (ABIE)	Attribute (BBIE)	Association (ASBIE)	Secondary Class	Related Requirement
ComponentInformation				[ref1]
	componentNumber			[ref1] {7.1-19}
	contentsDescription			[ref1] {7.1-18}
		componentDepth	MultiMeasurementValue	[ref1] {7.1-22}
		componentGrossWeight	MultiMeasurementValue	[ref1] {7.1-23}
		componentHeight	MultiMeasurementValue	[ref1] {7.1-20}
		componentWidth	MultiMeasurementValue	[ref1] {7.1-21}
OfficeSuppliesTrade-ItemExtension				[ref1]
	isTradeItemRecalled			[ref1]
	isAssemblyRequired			[ref1] {7.1-12}
	isProductCustomizable			[ref1] {7.1-14}
	isTradeItemANonFunctioningDisplayUnit			[ref1] {7.1-11}
	isTradeItemDirectShippable			[ref1] {7.1-15}
	isTradeItemShippedInMultipleContainers			[ref1] {7.1-16}
	modelName			[ref1]
	returnGoodsPolicy			[ref1] {7.1-24}
	tradeItemImageURL			[ref1] {7.1-6}
		fMCGAdditionalTrade-ItemIdentification	FMCGRadeItemIdentification	[ref1] {7.1-25}
		consumerPackageDisclaimer	MultiDescription	[ref1] {7.1-3}

Business Solution Design

Class (ABIE)	Attribute (BBIE)	Association (ASBIE)	Secondary Class	Related Requirement
		warningCopyDescription	MultiDescription	[ref1] {7.1-4}
		None	OutOfBoxInformation	[ref1]
		assembledForDisplayDimensions	OutOfBoxInformation	[ref1] {7.1-7,8,9}
		None	tradeItemComponents	[ref1]
		dependentProprietaryTradeItem	TradeItemIdentification	[ref1] {7.1-5}
		primaryAlternateTradeItem	TradeItemIdentification	[ref1] {7.1-13}
		None	TradeItemRecyclingContent	[ref1]
		None	NestingInformation	[ref1]
		unitsPerTradeItem	MultiMeasurementValue	[ref1]
		None	WarrantyInformation	[ref1]
tradeItemComponents				[ref1]
	isRadioFrequencyIdOnPackaging			[ref1] {7.1-10}
	totalNumberOfComponents			[ref1] {7.1-17}
		None	ComponentInformation	[ref1]
TradeItemRecycling-Content				[ref1]
	postConsumerRecycledMaterialContentPercentage			[ref1] {7.1-1}
	totalRecyclableContentPercentage			[ref1] {7.1-2}

Business Solution Design

1.5.2 GDD Report :

Office Supplies Trade Item Extension

Class (ABIE)	Attribute (BBIE)	Association (ASBIE)	Secondary Class	Official Dictionary Entry Name	Definition	Multiplicity
ComponentIn-formation				Component. Details	Not Available	
	componentNumber			Component. Component Number. Integer_ Numeric	Indicate the box number being shipped for the trade item.	1..1
	contentsDescription			Component. Contents Description. Text	Describes the contents of the carton (the component) when a trade item is shipped in multiple boxes.	1..1
		componentDepth	MultiMeasure-mentValue	Component. Component Depth. Multi-unit Measure	The measurement of the component from back to front, including the packaging.	1..1
		componentGrossWeight	MultiMeasure-mentValue	Component. Component Gross Weight. Multi-unit Measure	The weight of the component including all packaging materials.	1..1
		componentHeight	MultiMeasure-mentValue	Component. Component Height. Multi-unit Measure	The vertical dimension from the lowest extremity to the highest extremity, including packaging.	1..1
		componentWidth	MultiMeasure-mentValue	Component. Component Width. Multi-unit Measure	The measurement of the component from left to right, including the packaging.	1..1

Business Solution Design

Class (ABIE)	Attribute (BBIE)	Association (ASBIE)	Secondary Class	Official Dictionary Entry Name	Definition	Multiplicity
OfficeSuppliesTradeItemExtension				Office Supplies Trade Item Extension. Details	An extension to the trade item which enables the passing of information for the following categories of trade items: ·Paper and anything related to paper (writing instruments, glue, staplers, etc.) ·Office furniture (desks, cupboards, lamps, etc.) ·Computers, peripherals and consumables (printers, toner, mice, etc.). ·Communication trade items (telephones, faxes, etc.).	
	isAssemblyRequired			Office Supplies Trade Item Extension. Is Assembly Required. Indicator	Indicates that the Items in the package need to be assembled for use.	0..1
	isProductCustomizable			Office Supplies Trade Item Extension. Is Product Customizable. Indicator	Indicates whether the Items that the Retailer markets are customisable to meet the end consumer's requirements.	0..1
	isTradeItemANonFunctioningDisplayUnit			Office Supplies Trade Item Extension. Is Trade Item A Non Functioning Display Unit. Indicator	Indicates that a trade item is a non-functioning Trade Item, used for display purposes only. Typi-	0..1

Business Solution Design

Class (ABIE)	Attribute (BBIE)	Association (ASBIE)	Secondary Class	Official Dictionary Entry Name	Definition	Multiplicity
					cally it is the shell of the trade item that it represents. Relevant to when the non-functioning Trade Item has to actually be ordered from the supplier.	
	isTradeItemRecalled			Office Supplies Trade Item Extension. Is Trade Item Recalled. Indicator	An indicator for the Trade Item to determine if the Manufacturer or Supplier has recalled the product.	0..1
	isTradeItemDirect-Shippable			Office Supplies Trade Item Extension. Is Trade Item Direct Shippable. Indicator	Indicates that the trade item can be shipped directly from the supplier to the end-consumer or to the dealer.	0..1
	isTradeItemShipped-InMultipleContainers			Office Supplies Trade Item Extension. Is Trade Item Shipped In Multiple Containers. Indicator	Indicates that more than one box is to be delivered when the trade item is ordered.	0..1
	modelNumber			Office Supplies Trade Item Extension. Model Number. Text	Additional Vendor identification number, which defines the configuration of the product over and above the Item number.	0..1
	returnGoodsPolicy			Office Supplies Trade Item Extension. Return Goods Policy. Right Of Return For Non Sold Item Code_ Code	A code that describes the policy for defective, damaged or	0..1

Business Solution Design

Class (ABIE)	Attribute (BBIE)	Association (ASBIE)	Secondary Class	Official Dictionary Entry Name	Definition	Multiplicity
					non-saleable goods.	
	tradeItemImageURL			Office Supplies Trade Item Extension. Trade Item Image URL. Text	Indicates where image(s) may be found, a specific "product page" for the images, or a specific image file. These images are used for imaging in catalogues and websites for example.	0..*
		fMCGadditionalTradeItemIdentification	FMCGTradeItemIdentification	Office Supplies Trade Item Extension. Association. Non GTIN_ FMCG_ Trade Item Identification	Provides Additional Trade Item Identification for the Office Supplies Trade Item.	0..1
		consumerPackageDisclaimer	MultiDescription	Office Supplies Trade Item Extension. Consumer Package Disclaimer. Multi-language Description	Additional information that should be used in advertising and in displaying.	0..*
		warningCopyDescription	MultiDescription	Office Supplies Trade Item Extension. Warning Copy Description. Multi-language Description	Warning information is additional information that outlines special requirements, warning and caution information printed on the package.	0..*
		outOfBoxDimensions	OutOfBoxInformation	Office Supplies Trade Item Extension. Out Of Box Dimensions. Dimension	The measurement of the actual Trade Item. These dimensions should be used for Items that do not require assembly but differ in size when removed from the	0..1

Business Solution Design

Class (ABIE)	Attribute (BBIE)	Association (ASBIE)	Secondary Class	Official Dictionary Entry Name	Definition	Multiplicity
					packaging.	
		assembledForDisplayDimensions	OutOfBoxInformation	Office Supplies Trade Item Extension. Assembled For Display Dimensions. Dimension	The measurements of the displayed/consumer item.	0..1
		None	tradeItemComponents	Office Supplies Trade Item Extension. Association. Trade Item Components	Details on the individual components of a Trade Item.	0..1
		dependentProprietaryTradeItem	TradeItemIdentification	Office Supplies Trade Item Extension. Dependent Trade Item. Trade Item Identification	Dependent trade items are Trade Items which are required to make the current trade item functional.	0..*
		primaryAlternateTradeItem	TradeItemIdentification	Office Supplies Trade Item Extension. Primary Alternate Trade Item. Trade Item Identification	A Trade Item that is similar to the current Trade Item but is not exact match. Same form fit function, e.g. same product different colour, different package size, better quality.	0..1
		None	TradeItemRecyclingContent	Office Supplies Trade Item Extension. Association. Trade Item_ Recycling Content	Provides details (e.g. percentage contained) on recycled material content.	0..1
		unitsPerTradeItem	MultiMeasurementValue	Office Supplies Trade Item Extension. Units Per Trade Item. Multi-unit Measure	Numeric value to indicate number of physical pieces used to make up the Consumer Unit. Used if there is more than	0..1

Business Solution Design

Class (ABIE)	Attribute (BBIE)	Association (ASBIE)	Secondary Class	Official Dictionary Entry Name	Definition	Multiplicity
					one piece in one Trade Item.	
		None	NestingInformation	Office Supplies Trade Item Extension. Association. Nesting	The incremental height of Trade Items nested together.	0..*
		None	WarrantyInformation	Office Supplies Trade Item Extension. Association. Warranty Information	Information on the integrity of a product and of the maker's responsibility for the repair or replacement of defective parts for an Office Supplies Trade Item.	0..1
tradeItem-Components				Trade Item Components. Details	A constituent part of a trade item that is packaged separately.	
	isRadioFrequencyIDOnPackaging			Trade Item Components. RadioFrequencyIDOnPackaging. Indicator	Determines if there is a Radio Frequency Identification associated with the component.	1..1
	totalNumberOfComponents			Trade Item Components. Total Number Of Components. Integer_ Numeric	The total number of components (boxes) shipped for the trade item. Indicates the total number of boxes to be delivered when the trade item is ordered.	0..1
		None	ComponentInformation	Trade Item Components. Association. Component	Provides details on a constituent part of a trade item that is packaged separately.	0..*
TradeItemRe-				Trade Item_ Recycling Content. Details	Provides details (e.g.	

Business Solution Design

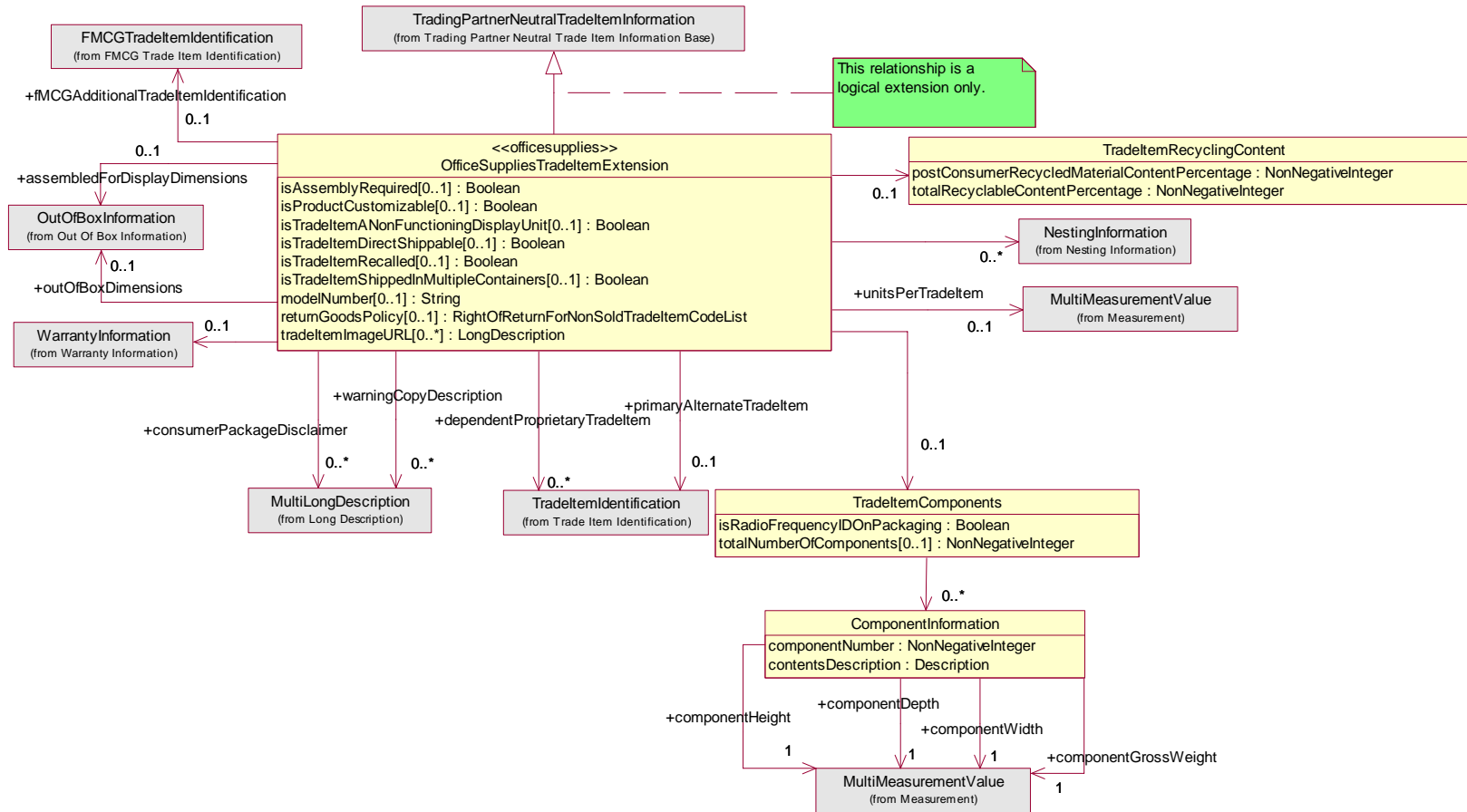
Class (ABIE)	Attribute (BBIE)	Association (ASBIE)	Secondary Class	Official Dictionary Entry Name	Definition	Multiplicity
cyclingContent					percentage contained) on recycled material content.	
	postConsumerRecycledMaterialContentPercentage			Trade Item_ Recycling Content. Post Consumer Recycled Material Content Percentage. Integer_ Numeric	Indicates the percentage of post-consumer material used in the trade item. The post-consumer material is collected from recycle bins and used as pulp to make new items. The percentage of post-consumer material is needed to drive whether the recycled logo goes on the item. Some post-consumer material is collected from the recycle bins and used as pulp to make new items.	1..1
	totalRecyclableContentPercentage			Trade Item_ Recycling Content. Total Recyclable Content Percentage. Integer_ Numeric	The percentage of all recycled material used to produce the trade item. Drives whether or not you can describe an item as recycled in advertising/marketing. This is the totalled recycled content including percentage of post	1..1

Business Solution Design

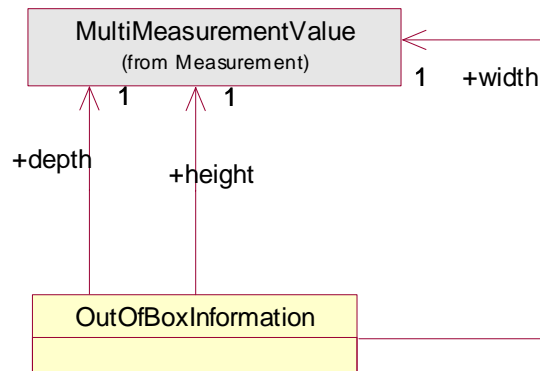
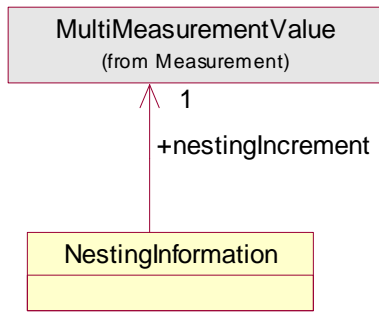
Class (ABIE)	Attribute (BBIE)	Association (ASBIE)	Secondary Class	Official Dictionary Entry Name	Definition	Multiplicity
					consumer recycled. It excludes all packaging material.	

1.5.3 Class Diagrams

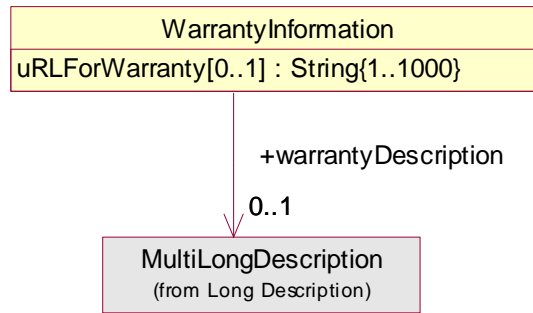
1.5.3.1 Office Supplies Trade Item Extension



Business Solution Design



Business Solution Design



Classes Found In Common BSD

FMCG Trade Item Identification
MultiLongDescription
MultiMeasurementValue
TradeItemIdentification

Business Solution Design

1.5.4 Code Lists

Code List Name	Code List Description
Right Of Return For Non Sold Trade Item Code List	
Code Name	Code Description
CALL_FOR_AUTHORIZATION	A call to a trading partner is required to obtain authorization to disposition defective, damaged, or otherwise non-saleable goods.
DESTROY_FOR_CREDIT	Trading partner documents and subsequently destroys defective, damaged, or otherwise non-saleable goods and is issued a credit for the material by the other trading partner.
DESTROY_NO_CREDIT	Indicates that in case a product is damaged, defective, or not-sellable it can be returned to the supplier. The supplier will then destroy the item and doesn't give the consumer any money back (i.e.: an old copier).
FULL	The manufacturer has indicated the return policy can be for a full shipment of the merchandise received by the retailer.
HOLD_FOR_INSPECTION	Defective, damaged, or otherwise non-saleable goods are held for inspection and verification by a trading partner prior to the issuance of credit for the material.
PARTIAL	The manufacturer has indicated the return policy can only be for a partial shipment of the merchandise received by the retailer.
RETURN_FOR_CREDIT	Defective, damaged, or otherwise non-saleable goods are physically returned by a trading partner prior to the issuance of credit for the material.

1.6 Business Document Example

1.7 Implementation Considerations

1.8 Testing

1.8.1 Pass / Fail Criteria

Not Applicable

1.8.2 Test Data

Attribute	Value
isAssemblyRequired	true
isProductCustomizable	true
isTradelItemANonFunctioningDisplayUnit	true
isTradelItemDirectShippable	true
isTradelItemShippedInMultipleContainers	true
returnGoodsPolicy	DESTROY_NO_CREDIT
tradelItemImageURL	www.myofficesupplyproductimage.org
postConsumerRecycledMaterialContent-Percentage	30
totalRecyclableContentPercentage	30
totalNumberOfComponents	2
componentNumber	1
contentsDescription	Legs for Table <ENG>
assembledForDisplayDimensions	
Height	90 CM
Depth	15 CM
Width	15 CM
componentHeight	100 CM
componentDepth	20 CM
componentWidth	20 CM
componentGrossWeight	30 KGS

1.9 Appendices

1.10 Summary of Changes

Change	BMS Version	Associated CR Number
<ul style="list-style-type: none">• Added in Nesting Information to Class Diagrams• Changed reference to Dimensions to reference to OutOfBoxInformation to keep consistency with Hardlines Extension.• Added back in isRadioFrequencyIDOn-Packaging to meet Candidate Attribute Requirements.• Changed attribute dependentTradeltem to dependentProprietaryTradeltem to match semantics on Candidate Attribute.	0.0.5	06-000262
<ul style="list-style-type: none">• New code values: FULL and PARTIAL added to the RightOfReturnForNonSoldTradeltem Code List	1.0.1	CR 06 -000181

2 Technical Solution Design

This section provides the specifications for the standards content ITRG approves. It is called the Technical Solution Design (TSD).

The Technical Solution Design contains:

- TSD Zip file Table of Contents
- Business Message Standard Section Technical Level GDD Report
- XSD (XML Schema Documents)
- XML Instance File and HTML Form View (XML and HTML files containing sample data specified in Section 1.6)

In the process of approving the Technical Solution Design, the ITRG will be provided the following artefacts:

- Any relevant Business Requirements Analysis Document (BRAD)
- Any relevant Business Requirements Document (BRD)
- Section 1 of Business Message Standard (Business Solution Design)
- Comment Resolution Template from Technical Public Review
- XML Test Report
- Change Request
- Other informative or reference documents