

Business Message Standard (BMS)

for

Full Truckload Load Tender

BRG: Deliver

BMS Release: 2.1

Document Version: 0.1.6

Release Date: 06.01.2006

(dd.mm.cyy)



Change Request Reference

Refer to Change Request (CR) Number(s):	03-000164
CR Submitter(s):	Wayne Gingerich/ Werner Enterprises
Date of CR Submission to GSMP:	20031110

Refer to Change Request (CR) Number(s):	01-000071
CR Submitter(s):	Uniform Code Council
Date of CR Submission to GSMP:	20010925

Business Requirements Document (BRAD) Reference

BRAD Title: Business Requirements Document (BRD) for Full Truckload Load Tender
BRAD Date: 20050620
BRAD Version: 1.8.0 BRD P4CL: 6929

BRAD Title: Common Library
BRAD Date: 14.10.2005
BRAD Version: 2.1 Doc Version 0.2.12 P4CL: 7582

Document Summary

Document Title:	BMS for Full Truckload Load Tender
Document Version:	0.1.6
Owner:	Deliver BRG
Status:	(Check one box) <input type="checkbox"/> DRAFT <input checked="" type="checkbox"/> Approved
BMS Template Version:	1.1
Targeted BMS Release:	2.1

Document Change History

Note: During development include revisions in history. Upon Approval, eliminate revisions and include only delta from previous version.

Date of Change	Version	Changed By	Reason for Change	Summary of Change	Model Build #
31.03.004	0.1.0	John Ryu	Initial Draft	Migration of BRD to standard BMS/BSD format	Model P4CL: 5890

Date of Change	Version	Changed By	Reason for Change	Summary of Change	Model Build #
					BSD P4CL: 5973
16.6.2005	0.1.1	Rajesh Manglani	Updates	Reflected the changes in the updated BRD.	
03.11.2005	0.1.2	John Ryu	Conversion BRD→BSD for ITRG approval	Details are noted in section 1.10 Sourced BRD Full Truck-load Load Tender V1.8.0 BRD P4CL: 6929	BSD P4CL: 7669 MDL P4CL: 6826
16.11.2005	0.1.3	John Ryu	Incorporate peer review comments	GDD platform updated and ODEN entered into GDD.	BSD P4CL: 7778
05.12.2005	0.1.4	John Ryu	Incorporate ITRG Review comment	Data Description corrected to reflect lower-CamelCaseConvention for ASBIE and BBIE Data Description added specific Business Requirements number in related requirements	BSD P4CL: 7880
06.01.2006	0.1.5	John Ryu	Errata	Updated Problem Statement/Business Need section 1.1.1	BSD P4CL: 7966
24.04.2007	0.1.6	Giovanni Biffi	Editorial Changes	Minor Editorial Changes to the Document	N/A

Business Message Standard

Table of contents

Chapter	Page
1 Business Solution	1
1.1 Business Domain View	1
1.1.1 Problem Statement / Business Need	1
1.1.2 Objective	1
1.1.3 Audience	1
1.1.4 Artefacts	1
1.1.5 References	1
1.1.6 Acknowledgements	2
1.1.6.1 BRG Members	2
1.1.6.2 ITRG Members	2
1.1.6.3 Task/Project Group Participants (Transportation Task Group)	3
1.1.6.4 Design Team Members	3
1.2 Business Context	4
1.3 Additional Technical Requirements Analysis	4
1.3.1 Technical Requirements (optional)	4
1.4 Business Transaction View	5
1.4.1 Business Transaction Use Case Diagram	5
1.4.2 Use Case Description	5
1.4.3 Business Transaction Activity Diagram(s)	7
1.4.3.1 Full Truckload Load Tender	7
1.4.4 Business Transaction Sequence Diagram	8
1.4.4.1 Full Truckload Load Tender	8
1.5 Information Model (including GDD Report)	9
1.5.1 Data Description:	9
1.5.2 GDD Report :	13
1.5.3 Class Diagrams	20
1.5.3.1 Class Diagram: Full Truckload Load Tender	20
1.5.3.2 Class Diagram: FTL Shipment Information	20
1.5.4 Code Lists	21
1.6 Business Document Example	27

Business Message Standard

Table of contents

1.7 Implementation Considerations 30

1.8 Testing..... 31

 1.8.1 Pass / Fail Criteria 31

 1.8.2 Test Data 31

1.9 Appendices..... 32

 1.9.1 Full Truckload Tender BMS Version 2.0.1..... 32

 1.9.2 Change Summary 33

1.10 Summary of Changes..... 35

2 XML Technical Solution ITRG Packet..... 36

Business Solution Design

1 Business Solution

1.1 Business Domain View

1.1.1 Problem Statement / Business Need

A message is needed that can pass Load Tender data from the Shipper (also called Con-signor), Consignee or 3rd Party to the full truckload carrier.

1.1.2 Objective

To supply the detail design of a Full Truckload Load Tender business transaction needed to meet the requirements of the referenced BRAD(s).

1.1.3 Audience

The audience of the standards would be any participant in the global supply chain. This would include carriers, and their customers and partners.

1.1.4 Artefacts

Artefact name	State	Artefact / State description
BRD Full Truckload Load Tender, Version 1.2, June 30, 2003		Deliver BRG approved this BRD. This BRD was the source to create this BSD.
Change Request # 01-000071		Change request objective was to develop a Core Transport Service Request model and schema.

1.1.5 References

Reference Name	Description
Transportation FTL AS-IS Model, Draft 1.4 July 13, 2001	
Business Requirements Document for Despatch Advice, January 2001	

Business Solution Design

1.1.6 Acknowledgements

1.1.6.1 BRG Members

Function	Name	Company / Organisation
BRG Co-chair	Sue Donarski	Schneider Logistics
BRG Co-chair	Debra Noyes	Johnsonville Sausage, L.L.C.
BRG Member	Mario Abitol	GS1 Argentina
BRG Member	Stephanie Hodge-Daniels	Levi Strauss & Co.
BRG Member	Roman Gural	UPS
BRG Member	Wayne Gingerich	Werner Enterprises
BRG Member	Thorsten Kirschner	GS1 Germany
BRG Member	Aart Koning	Albert Heijn
BRG Member	Paul Martin	General Mills
BRG Member	Kari Melhus	Target Corporation
BRG Member	Jeff Miller	Kraft Foods, Inc.
BRG Member	Mike Osiecki	Best Buy Company
BRG Member	Bob Robertson	Manhattan Associates
BRG Member	Stef Spaan	GS1 Netherlands
BRG Member	Tamari Tashiro	GS1 Japan
BRG Member	José Jean-Paul Tavares	GS1 Brazil
BRG Member	Apostolos Xiradakis	Unilever
BRG Manager	Tom Heist	GS1

1.1.6.2 ITRG Members

Function	Name	Company / Organisation
ITRG Chair	Carol Edison	General Mills
ITRG Participant	Jon Sharratt	Target
ITRG Participant	Stef Spaan	GS1 Netherlands

Business Solution Design

1.1.6.3 Task/Project Group Participants (Transportation Task Group)

Function	Name	Company / Organisation
Co-chair	Rick Battista	Roadway
Co-chair	Sue Donarski	Schneider Logistics
Participant	Doug Anderson	Kleinschmidt
Participant	Jared Andrews	LMI
Participant	Regina De Baker	Watkins
Participant	Rita Marie Fernandez	UPS
Participant	Brian Finale	UPS
Participant	Wayne Gingerich	Werner
Participant	Roman Gural	UPS
Participant	John Hervey	NACS
Participant	Scott Keske	Best Buy Company
Participant	Shanda Marvin	Procter & Gamble
Participant	Kari Melhus	Target
Participant	Tom Moriarty	J.C. Penney
Participant	Dana Morton	Fedex
Participant	Franck Napoli	LMI
Participant	Mike Osiecki	Best Buy Company
Participant	Patrick Pinter	ABF
Participant	Bob Robertson	Manhattan Associates

1.1.6.4 Design Team Members

Function	Name	Organisation
Modeller	John Ryu	GS1
XML Technical Designer	Dipan Anarkat	GS1
EANCOM Technical Designer	Not Applicable	
Peer Reviewer	Mark Van Eeghem	GS1

Business Solution Design

1.2 Business Context

Context Category	Value(s)
Industry	All
Geopolitical	All
Product	All
Process	Deliver
System Capabilities	GS1 System
Official Constraints	None

1.3 Additional Technical Requirements Analysis

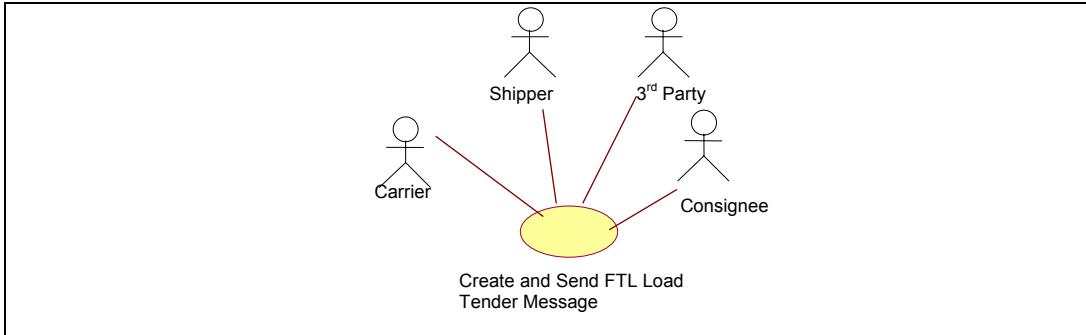
1.3.1 Technical Requirements (optional)

(User Interface, Security, Performance, Quality, etc.)

Number	Statement	Rationale
	None	

1.4 Business Transaction View

1.4.1 Business Transaction Use Case Diagram



1.4.2 Use Case Description

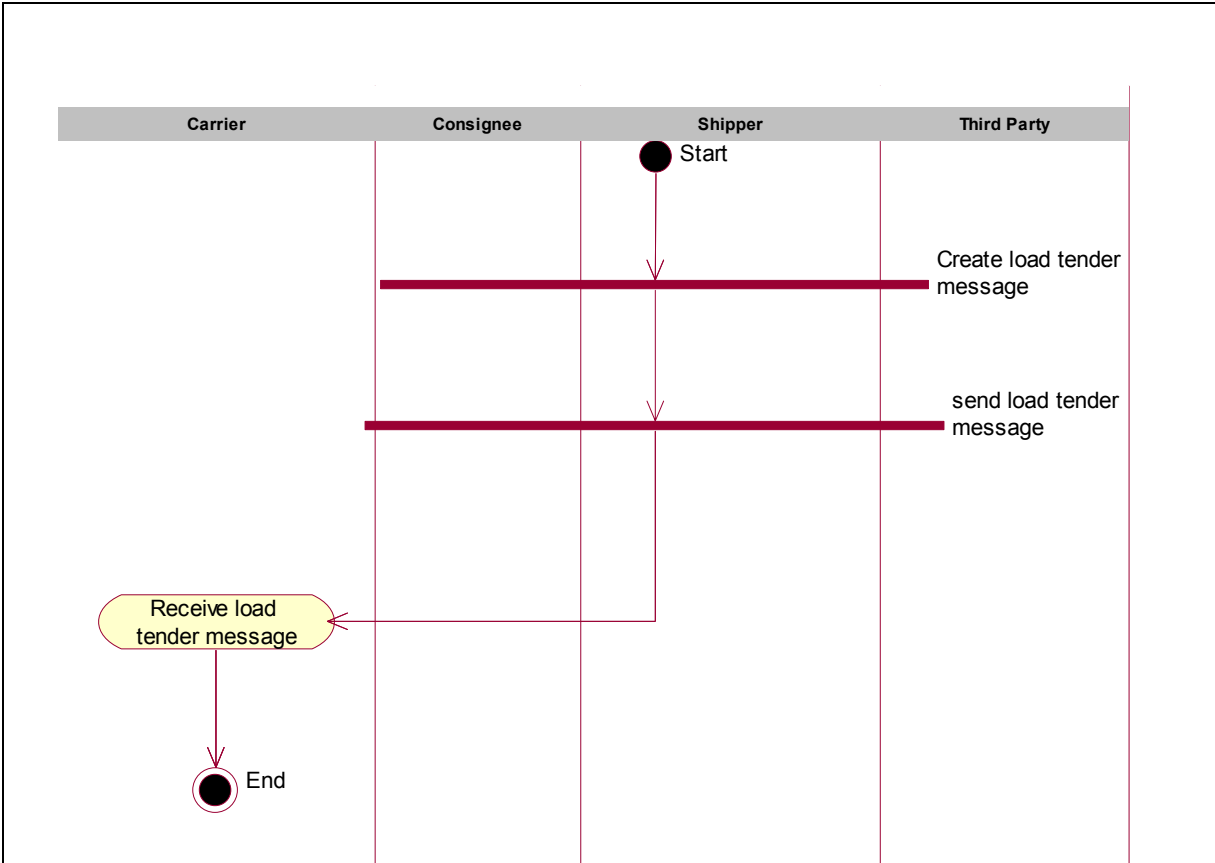
Use Case ID	UC-1
Use Case Name	Create and Send FTL Load Tender Message
Use Case Description	A standard load tender for FTL would provide the North American Motor Freight industry with an electronic means of communicating shipping instructions to the Carrier from the Shipper, Consignee or Third Party.
Actors (Goal)	There are four actors in this process, the Carrier, Shipper (also called consignor) and Consignee with another possible actor named Third Party.
Performance Goals	None
Preconditions	Alignment of data between trading partners such as an explicit agreement between Shipper and Consignee to deliver and receive, respectively.
Post conditions	<p>Successful End Condition:</p> <p>Shipper, Consignee, or Third party sends load tender message to carrier.</p> <p>Failed End Condition:</p> <p>Shipper, Consignee, or Third party cannot send load tender message to carrier.</p>
Scenario	<p>Begins when</p> <p>The process starts when a shipper consignee or Third party recognizes the need to tender a load.</p>

Business Solution Design

	Continues with...	
	Step #	Actor
	1	Shipper, Con- signee or Third Party
	2	Shipper, Con- signee or Third Party
	3	Carrier
	Activity Step Prepares load tender message consisting of all relevant data regarding the goods to be picked up and transported from initial origin to final destination and all intermediate stops if applicable. Sends the Load Tender Message to the Carrier as a Load Tender. Receives Load Tender Message	
	Ends when	
	The carrier receives the tender message.	
Alternative Scenario	None	
Related Requirements	None	
Related Rules	None	

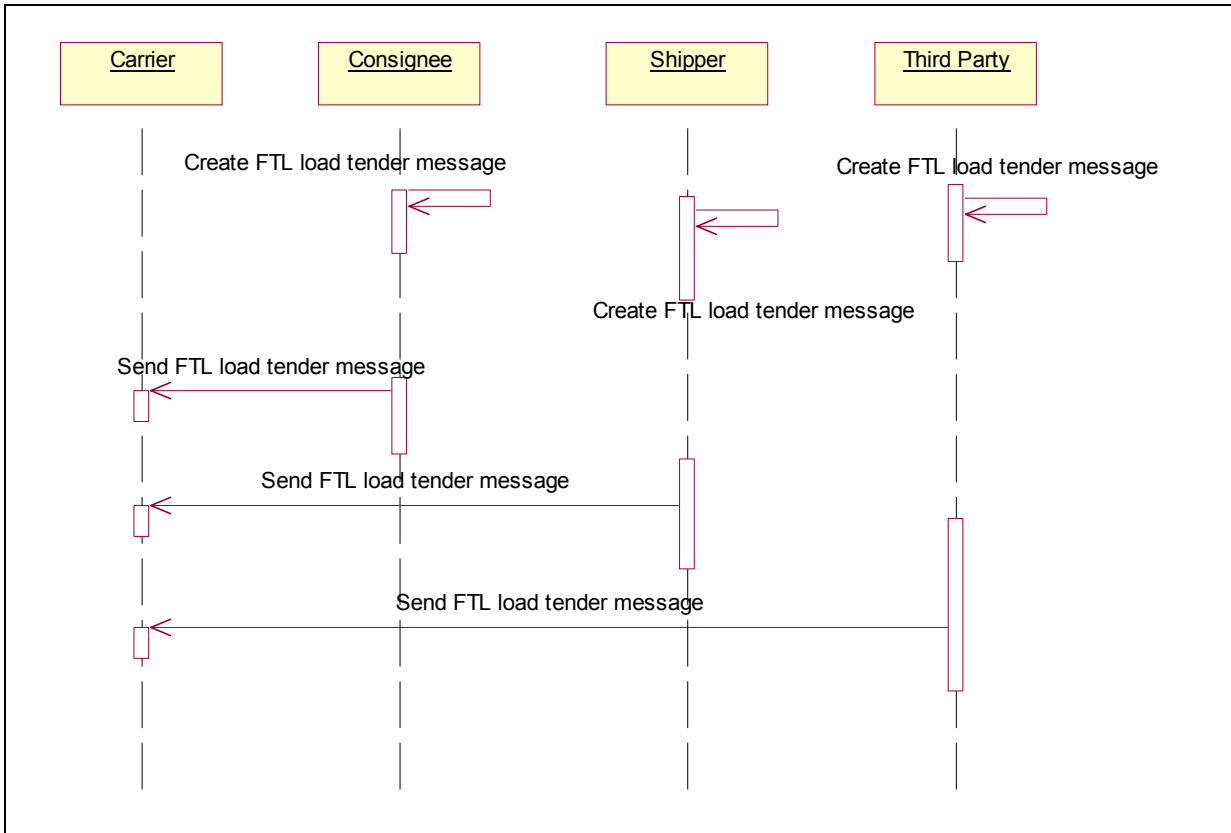
1.4.3 Business Transaction Activity Diagram(s)

1.4.3.1 Full Truckload Load Tender



1.4.4 Business Transaction Sequence Diagram

1.4.4.1 Full Truckload Load Tender



Business Solution Design

1.5 Information Model (including GDD Report)

1.5.1 Data Description:

CLASS (ABIE)	ATTRIBUTE (BBIE)	ASSOCIATION (ASBIE)	SECONDARY CLASS	Related Requirements
CommodityGroup				BRD Full Truckload Load Tender V1.8.0 BRD {BR 10, 11, 12}
	commodityDescription			BRD Full Truckload Load Tender V1.8.0 BRD {BR 10}
	commodityType			BRD Full Truckload Load Tender V1.8.0 BRD {BR 10}
	commodityQuantity			BRD Full Truckload Load Tender V1.8.0 BRD {BR 10}
		commodityDimension	PackageDimension	BRD Full Truckload Load Tender V1.8.0 BRD {BR 12}
		volume	MultiMeasurementValue	BRD Full Truckload Load Tender V1.8.0 BRD {BR 11}
		grossWeight	MultiMeasurementValue	BRD Full Truckload Load Tender V1.8.0 BRD {BR 11}
		netWeight	MultiMeasurementValue	BRD Full Truckload Load Tender V1.8.0 BRD {BR 11}
EquipmentInformation				BRD Full Truckload Load Tender V1.8.0 BRD {BR 6}
	equipmentIdentification			BRD Full Truckload Load Tender V1.8.0 BRD {BR 6}
	equipmentType			BRD Full Truckload Load Tender V1.8.0 BRD {BR 6}
		equipmentLength	MultiMeasurementValue	BRD Full Truckload Load Tender V1.8.0 BRD {BR 6}
FTLShipmentInformation				BRD Full Truckload Load Tender V1.8.0 BRD {BR 5}
	shipmentQuantity			BRD Full Truckload Load Tender V1.8.0 BRD {BR 5}
	shipmentSpecialHandling			BRD Full Truckload Load Tender V1.8.0 BRD {BR 5}

Business Solution Design

CLASS (ABIE)	ATTRIBUTE (BBIE)	ASSOCIATION (ASBIE)	SECONDARY CLASS	Related Requirements
	specialInstruction			BRD Full Truckload Load Tender V1.8.0 BRD {BR 5}
	truckloadSpecialService			BRD Full Truckload Load Tender V1.8.0 BRD {BR 5}
		shipmentGrossWeight	MultiMeasurementValue	BRD Full Truckload Load Tender V1.8.0 BRD {BR 5}
		shipmentNetWeight	MultiMeasurementValue	BRD Full Truckload Load Tender V1.8.0 BRD {BR 5}
		totalVolume	MultiMeasurementValue	BRD Full Truckload Load Tender V1.8.0 BRD {BR 5}
FullTruckloadLoadTender				BRD Full Truckload Load Tender V1.8.0 BRD {BR 1,2,3,4,5,6,7,8}
	tenderPurposeType			BRD Full Truckload Load Tender V1.8.0 BRD {BR 2}
	declaredValue			BRD Full Truckload Load Tender V1.8.0 BRD {BR 6}
	mustRespondByDateTime			BRD Full Truckload Load Tender V1.8.0 BRD {BR 2}
	transportationPaymentMethod			BRD Full Truckload Load Tender V1.8.0 BRD {BR 2}
		billTo	LocationInformation	BRD Full Truckload Load Tender V1.8.0 BRD {BR 7}
		customsBroker	LocationInformation	BRD Full Truckload Load Tender V1.8.0 BRD {BR 7}
		orderedBy	LocationInformation	BRD Full Truckload Load Tender V1.8.0 BRD {BR 7}
		partyFillingShippersOrder	LocationInformation	BRD Full Truckload Load Tender V1.8.0 BRD {BR 7}
		partyToReceiveDeliveryOrder	LocationInformation	BRD Full Truckload Load Tender V1.8.0 BRD {BR 7}
		partyToReceiveFreightBill	LocationInformation	BRD Full Truckload Load Tender V1.8.0 BRD {BR 7}
		carrierIdentification	PartyIdentification	BRD Full Truckload Load Tender V1.8.0 BRD {BR 4}
		fullTruckloadLoadTenderIdentifica-tion	EntityIdentification	BRD Full Truckload Load Tender V1.8.0 BRD {BR 3}
		shipmentDetail	FTLShipmentInformation	BRD Full Truckload Load Tender V1.8.0 BRD {BR 5}

Business Solution Design

CLASS (ABIE)	ATTRIBUTE (BBIE)	ASSOCIATION (ASBIE)	SECONDARY CLASS	Related Requirements
		None	TransportationReference	BRD Full Truckload Load Tender V1.8.0 BRD {BR 6}
		None	HazardousShipmentInformation	BRD Full Truckload Load Tender V1.8.0 BRD {BR 6}
		None	Document	BRD Full Truckload Load Tender V1.8.0 BRD {BR 1}
		None	EquipmentInformation	BRD Full Truckload Load Tender V1.8.0 BRD {BR 6}
		None	ShipmentStopGroup	BRD Full Truckload Load Tender V1.8.0 BRD {BR 8}
Pallet Information				BRD Full Truckload Load Tender V1.8.0 BRD {BR 9}
	palletExchangeCode			BRD Full Truckload Load Tender V1.8.0 BRD {BR 9}
	palletQuantity			BRD Full Truckload Load Tender V1.8.0 BRD {BR 9}
ShipmentStopGroup				BRD Full Truckload Load Tender V1.8.0 BRD {BR 8, 9}
	stopSequence			BRD Full Truckload Load Tender V1.8.0 BRD {BR 8, 9}
	stopTypeCode			BRD Full Truckload Load Tender V1.8.0 BRD {BR 8,9}
		commodityInformation	CommodityGroup	BRD Full Truckload Load Tender V1.8.0 BRD {BR 9}
		shipmentDetail	FTLShipmentInformation	BRD Full Truckload Load Tender V1.8.0 BRD {BR 9}
		shipFrom	LocationInformation	BRD Full Truckload Load Tender V1.8.0 BRD {BR 8}
		shipTo	LocationInformation	BRD Full Truckload Load Tender V1.8.0 BRD {BR 8}
		none	PurchaseOrderInformation	BRD Full Truckload Load Tender V1.8.0 BRD {BR 9}
		none	PalletInformation	BRD Full Truckload Load Tender V1.8.0 BRD {BR 9}
		none	StopInformation	BRD Full Truckload Load Tender V1.8.0 BRD {BR 9}
		none	TransportationReference	BRD Full Truckload Load Tender V1.8.0 BRD {BR 9}

Business Solution Design

CLASS (ABIE)	ATTRIBUTE (BBIE)	ASSOCIATION (ASBIE)	SECONDARY CLASS	Related Requirements
StopInformation				BRD Full Truckload Load Tender V1.8.0 BRD {BR 9}
	stopDateAndTime			BRD Full Truckload Load Tender V1.8.0 BRD {BR 9}
	stopDateAndTimeType			BRD Full Truckload Load Tender V1.8.0 BRD {BR 9}

Business Solution Design

1.5.2 GDD Report :

Full Truckload Load Tender v1.0

Class (ABIE)	Attribute (BBIE)	Association (ASBIE)	Secondary Class	Official Dictionary Entry Name	Definition	Multi- plicity
CommodityGroup				Commodity Group. Details	Commodity Group provides the commodity description, commodity type, commodity weight, and the commodity quantity.	
	commodityDescription			Commodity Group. Commodity Description_ Description. Text	Description of an item as required for rating and billing purposes and customer inventory control expectations.	1..1
	commodityQuantity			Commodity Group. Commodity Quantity_ Quantity. Quantity	The numeric value of the quantity of the commodity and the optional unit of measure.	0..1
	commodityType			Commodity Group. Commodity Type_ Code. Commodity_ Code	Code describing a commodity or group of commodities.	1..1
		grossWeight	MultiMeasurementValue	Commodity Group. Gross Weight_ Association. Multi-unit Measure	The numeric value of gross weight of the commodity and the associated unit of measure. Gross weight is defined as weight or mass of goods including packaging, but excluding the carrier's equipment. This value may be converted into multi measurement formats.	0..1
		netWeight	MultiMeasurementValue	Commodity Group. Net Weight_ Association. Multi-unit Measure	The numeric value of net weight of the commodity and the associated unit of measure. This value may be converted into multi measurement formats.	0..1
		volume	MultiMeasurementValue	Commodity Group. Volume_ Association. Multi-unit Measure	The numeric value of volume of the commodity and the associated unit of measure. It is a volumetric measurement. This value may be converted into multi measurement formats.	0..1
		commodityDimension	PackageDimension	Commodity Group. Commodity Dimension_ Association. Package Dimension	Provides the length, width, and height of a commodity with their associated unit of measure. The unit of measure may be represented in multiple formats.	0..1

Business Solution Design

Class (ABIE)	Attribute (BBIE)	Association (ASBIE)	Secondary Class	Official Dictionary Entry Name	Definition	Multiplicity
EquipmentInformation				Equipment. Details	Equipment Information provides the type of equipment requested for the Full Truckload Load Tender. There may be identification of the equipment and the length of the equipment.	
	equipmentIdentification			Equipment. Equipment Identification_ Equipment Number. Text	The identification of the equipment unit represented as an alphanumeric data.	0..1
	equipmentType			Equipment. Type. Equipment Type Code List_ Code	Code identifying equipment type.	1..1
		equipmentLength	MultiMeasurementValue	Equipment. Equipment Length_ Association. Multi-unit Measure	Length of equipment ordered or used to transport shipment and the associated unit of measure. This value may be converted into multi measurement formats.	0..1
FTLShipmentInformation				FTL Shipment Information. Details	The FTL Shipment Information must provide the shipment information which include the number of units and the shipment weight. In addition there may be shipment special handling code, truckload special service codes, and special instructions.	
	shipmentQuantity			FTL Shipment Information. Shipment Quantity_ Quantity. Quantity	Provide the number of units with the optional unit of measure. It is the total number of pieces for the entire shipment.	0..1
	shipmentSpecialHandling			FTL Shipment Information. Shipment Special Handling_ Code. Shipment Special Handling_ Code	Code specifying special transportation handling instructions.	0..*
	specialInstruction			FTL Shipment Information. Special Instruction_ Description. Text	To transmit information in a free-form format, if necessary, for comment or special instruction and the associated language.	0..*
	truckloadSpecialService			FTL Shipment Information. Truckload Special Service_ Code List. Truckload Special Service_ Code	The truckload special service must be selected from the Truckload Special Service Code List.	0..*
		shipmentGrossWeight	MultiMeasurementValue	FTL Shipment Information. Shipment Gross Weight_ Association. Multi-unit	Provide shipment gross weight with the associated unit of measure. Gross weight is defined as weight or mass of goods including packaging, but excluding the carrier's equipment.	0..1

Business Solution Design

Class (ABIE)	Attribute (BBIE)	Association (ASBIE)	Secondary Class	Official Dictionary Entry Name	Definition	Multiplicity
				Measure		
		shipmentNetWeight	MultiMeasurementValue	FTL Shipment Information. Shipment Net Weight Association. Multi-unit Measure	Provide the shipment net weight with the associated unit of measure.	0..1
		totalVolume	MultiMeasurementValue	FTL Shipment Information. Total Volume Association. Multi-unit Measure	Provide the total volume with the associated unit of measure. It is the total volumetric measurement for the entire shipment.	0..1
FullTruckloadLoadTender				Full Truck Load_ Load Tender. Details	Full Truckload Load Tender is a distinctive EAN.UCC Business Document used to convey shipper's requirements for a Full Truckload Load Tender to a FTL carrier. The Carrier should respond with a FTL Load Tender Response message.	
	declaredValue			Full Truck Load_ Load Tender. Declared Value. Amount	Value of shipment, expressed in the standard monetary denomination for the currency specified.	0..1
	mustRespondBy-DateTime			Full Truck Load_ Load Tender. Must Respond By_ Date Time. Amount	The date and time by which the carrier is expected to respond to the originator of the message as to whether or not the load tender has been accepted or rejected.	0..1
	tenderPurposeType			Full Truck Load_ Load Tender. Tender Purpose Type. Tender Purpose List_ Code	Code identifying purpose of message.	1..1
	transportation-PaymentMethod			Full Truck Load_ Load Tender. Transportation Payment Method. Transportation Payment Method_ Code	Code identifying the method for payment of the movement of the goods.	0..1
		None	Document	Full Truck Load_ Load Tender. Inheritance. Electronic_ Document	This contains the document information of the message.	1..1
		fullTruckloadLoadTenderIdentification	EntityIdentification	Full Truck Load_ Load Tender. Identification. Entity Identification	Identification number assigned by the originator of the tender that uniquely identifies the load from origin to ultimate destination and is not subject to modification	1..1

Business Solution Design

Class (ABIE)	Attribute (BBIE)	Association (ASBIE)	Secondary Class	Official Dictionary Entry Name	Definition	Multiplicity
		None	EquipmentInformation	Full Truck Load_ Load Tender. Association. Equipment	This provides the details of the equipment information contained in the shipment.	0..*
		shipmentDetail	FTLShipmentInformation	Full Truck Load_ Load Tender. Association. FTL Shipment Information	The FTL Shipment Information must provide the shipment information which include the number of units and the shipment weight. In addition there may be shipment special handling code, truckload special service codes, and special instructions.	1..1
		None	HazardousShipmentInformation	Full Truck Load_ Load Tender. Association. Hazardous Goods	This provides the details of the hazardous material information contained in the shipment.	0..1
		billTo	LocationInformation	Full Truck Load_ Load Tender. Bill To_ Association. Deliver_ Location	Identifies the entity to whom the carrier invoice will be sent.	0..1
		customsBroker	LocationInformation	Full Truck Load_ Load Tender. Customs Broker_ Association. Deliver_ Location	Identifies the broker entity handling the import/export customs for the shipment.	0..1
		orderedBy	LocationInformation	Full Truck Load_ Load Tender. Ordered By_ Association. Deliver_ Location	Identifies the entity that ordered the shipment.	0..1
		partyFillingShippersOrder	LocationInformation	Full Truck Load_ Load Tender. Party Filling Shippers Order_ Association. Deliver_ Location	Identifies the entity that is supplying the contents of the shipment.	0..1
		partyToReceiveDeliveryOrder	LocationInformation	Full Truck Load_ Load Tender. Party To Receive Delivery Order_ Association. Deliver_ Location	Identifies the entity that is to receive the delivery order.	0..1
		partyToReceive-FreightBill	LocationInformation	Full Truck Load_ Load Tender. Party To Receive Freight Bill_ Association. Deliver_ Location	Identifies the entity is to receive the freight bill.	0..1

Business Solution Design

Class (ABIE)	Attribute (BBIE)	Association (ASBIE)	Secondary Class	Official Dictionary Entry Name	Definition	Multiplicity
		carrierIdentification	PartyIdentification	Full Truck Load_ Load Tender. Carrier. Party Identification	Identifies the carrier.	1..1
		None	ShipmentStopGroup	Full Truck Load_ Load Tender. Association. Shipment Stop Group	This provides the stop off group details contained in the shipment.	0..*
		None	Transportation-Reference	Full Truck Load_ Load Tender. Association. Transportation_ Entity Reference	This provides the reference identification with the associated deliver identification type.	0..*
PalletInformation				Pallet Information. Details	This provides the pallet information of pallet exchange code and the pallet quantity.	
	palletExchangeCode			Pallet Information. Pallet Exchange_ Code. Pallet Exchange Code List_ Code	Code specifying pallet exchange instructions.	1..1
	palletQuantity			Pallet Information. Pallet_ Quantity. Numeric	Number of pallets.	1..1
ShipmentStopGroup				Shipment Stop Group. Details	All information related to a physical stop location. The stop group will not be used for cancellation scenarios.	
	stopSequence			Shipment Stop Group. Stop_ Sequence. Text	Identifying number for the specific stop and the sequence in which the stop is to be performed within the shipment.	1..1
	stopTypeCode			Shipment Stop Group. Type Code. Stop_ Code	Code specifying the reason for the stop.	1..1
		commodityInformation	Commodity-Group	Shipment Stop Group. Commodity Information_ Association. Commodity Group	Commodity Group provides the commodity description, commodity type, commodity weight, and the commodity quantity.	0..*
		shipmentDetail	FTLShipmentInformation	Shipment Stop Group. Shipment Detail_ Association. FTL Shipment Information	The FTL Shipment Information must provide the shipment information which include the number of units and the shipment weight. In addition there may be shipment special handling code, truckload special service codes, and special instructions.	0..1

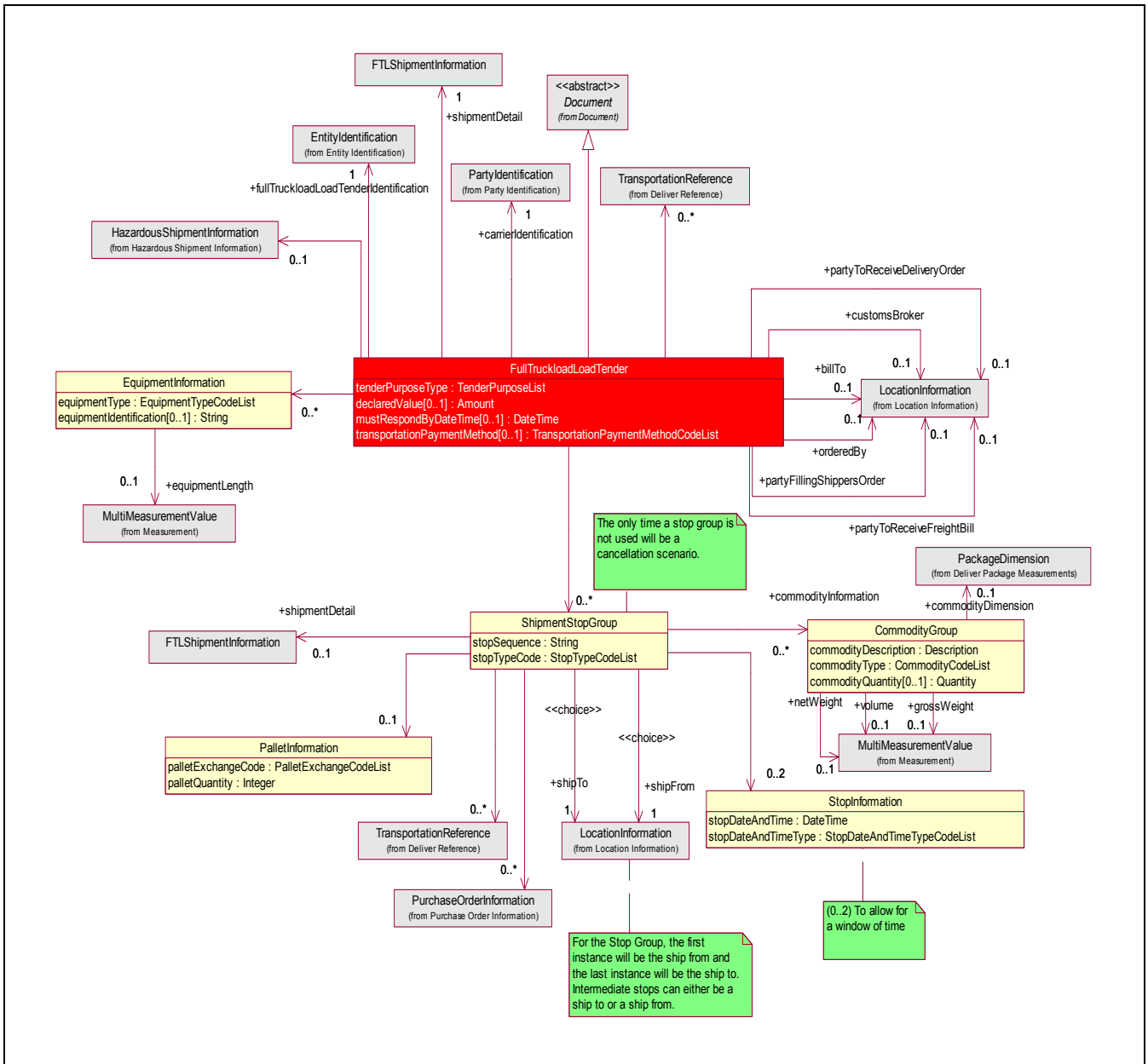
Business Solution Design

Class (ABIE)	Attribute (BBIE)	Association (ASBIE)	Secondary Class	Official Dictionary Entry Name	Definition	Multiplicity
		shipFrom	LocationInformation	Shipment Stop Group. Choice_Ship From_ Association. Deliver_ Location	Identifies the pick-up stop entity. Provides the choice for the stop group. The first instance will be the ship from and the last instance will be the ship to. Intermediate stops can either be a ship to or a ship from.	1..1
		shipTo	LocationInformation	Shipment Stop Group. Choice_Ship To_ Association. Deliver_ Location	Identifies the delivery stop entity. Provides the choice for the stop group. The first instance will be the ship from and the last instance will be the ship to. Intermediate stops can either be a ship to or a ship from.	1..1
		None	PalletInformation	Shipment Stop Group. Association. Pallet Information	This provides the pallet information of pallet exchange code and the pallet quantity.	0..1
		None	PurchaseOrderInformation	Shipment Stop Group. Association. Purchase Order Information	This provides the detail purchase order information.	0..*
		None	StopInformation	Shipment Stop Group. Association. Stop Information	The stop information provides the stop date time and the stop date time qualifier. This can be used to provide a framework of time.	0..2
		None	TransportationReference	Shipment Stop Group. Association. Transportation_ Entity Reference	This provides the reference identification with the associated deliver identification type.	0..*
StopInformation				Stop Information. Details	The stop information provides the stop date time and the stop date time qualifier. This can be used to provide a framework of time.	
	stopDateAndTime			Stop Information. Stop Date And Time_ Date Time. DOTW_ Date Time	Date and / or time as it relates to a particular stop.	1..1
	stopDateAndTimeType			Stop Information. Type. Stop_ Code	Codes specifying the reason for the stop date and time.	1..1

End of Report

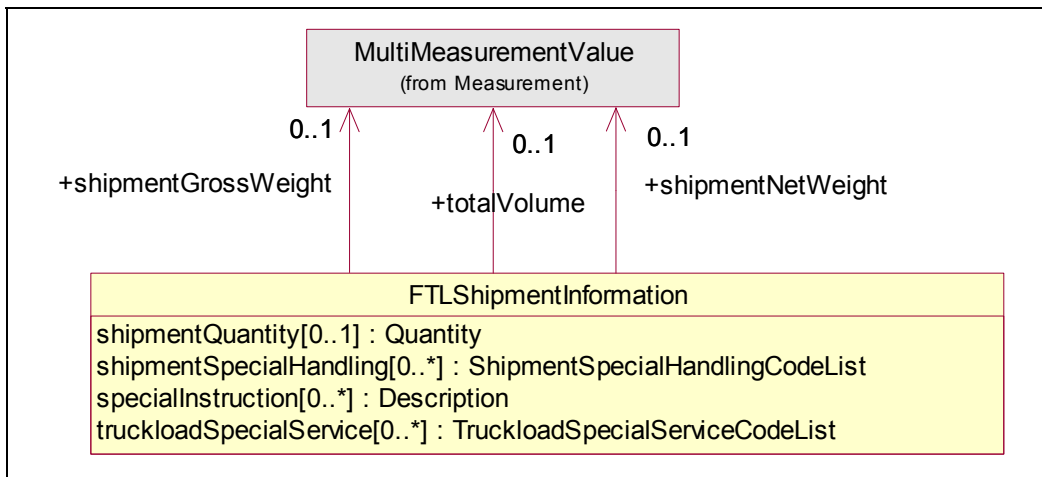
1.5.3 Class Diagrams

1.5.3.1 Class Diagram: Full Truckload Load Tender



1.5.3.2 Class Diagram: FTL Shipment Information

Business Solution Design



1.5.4 Code Lists

(Output from GDD should be pasted in this section.)

Code List Name	Code List Description
Commodity Code List	Codes describing commodities.
Code Name	Code Description
NATIONAL_MOTOR_FREIGHT_CLASSIFICATION	Code describing a commodity or group of commodities as defined by the National Motor Freight Classification (NFMFC).
RECEIVERS_COMMODITY_CODE	The receiver's code describing a commodity.
SENDERS_COMMODITY_CODE	The sender's code describing a commodity.

Code List Name	Code List Description
Equipment Type Code List	Code identifying equipment types.
Code Name	Code Description
CHASIS	A wheeled framework for moving containers.
CONTAINER	Standard equipment, without wheels, that may be used in multi-modal environments (Over the road, Rail, Ocean, etc.)
CONTROLLED_TEMPERATURE_TRAILER REEFER	A trailer equipped with built-in cooling system.
DOUBLE DROP TRAILER	Specialized equipment with double drop interior.
FIXED_RACK_DOUBLE_DROP_TRAILER	Specialized equipment with fixed rack interior.
FIXED_RACK_FLAT_BED_TRAILER	Specialized equipment with rack system.
FIXED_RACK_SINGLE_DROP_TRAILER REEFER	Specialized equipment with rack system and drop trailer interior.
FLAT_BED_TRAILER	Trailer equipment with floor only, no walls no roof.
FLAT_BED_TRAILER_PNEUMATIC	Flatbed trailer with pneumatic lift capability to allow for loading or dumping cargo.
Code Name	Code Description

Business Solution Design

HIGH_CUBE_TRAILER	Trailer equipment with extended height.
OPEN_TOP_VAN	Trailer equipment with floor and walls only, no roof.
REMOVABLE_SIDE_TRAILER	Specialized trailer with removable sides.
SINGLE_DROP_TRAILER	Specialized trailer with single drop interior.
TRACTOR	Vehicle which is set up to pull trailer equipment.
TRAILER_DRY_FREIGHT	Trailer equipment designed to move dry freight; no special equipment attached.
TRAILER_ELECTRIC_HEAT	Trailer equipment with heating system.
TRAILER_HEATED_INSULATED_VENTILATED	Trailer equipment with heating and ventilation systems.
TRAILER_INSULATED	Trailer equipment with insulation.
TRAILER_NOT_OTHERWISE_SPECIFIED	Trailer equipment; no special equipment requested – generic.
TRAILER_PNEUMATIC	Trailer with pneumatic lift capability to allow for loading or dumping cargo.
TRAILER_TANK_CHEMICALS	Special trailer tank used for safely transporting chemical commodities (such as motor fuel).
TRAILER_TANK_FOOD_GRADE_LIQUIDS	Equipment with special criteria for cleansing due to product being ingested.
TRAILER_TANK_GAS	Equipment with open ended truck for gas hauling in individual tanks on a single trailer.
TRUCK_VAN	Equipment where the vehicle has the trailer component attached; the trailer does not detach.

Business Solution Design

Code List Name	Code List Description
Pallet Exchange Code List	Code specifying pallet exchange instructions.
Code Name	Code Description
EXCHANGE_PALLETS	One for one pallet exchange at delivery location.
PALLETS_TO_BE_PURCHASED_BY_CUSTOMER	Delivery location will purchase pallets used in shipment.
RETURN_PALLETS	Pallets used in the shipment will be unloaded and returned to shipper.
THIRD_PARTY_PALLET_EXCHANGE	A third party company (not the delivery nor shipper locations) will handle the pallet exchange logistics.

Code List Name	Code List Description
Shipment Special Handling Code List	Codes specifying special transportation handling instructions.
Code Name	Code Description
AM_DELIVERY_REQUIREMENT	Delivery must be made in the AM (morning) local time.
BLIND_SHIPMENT	Shipment where the true origin is hidden from the receiver.
DISPOSE_OF_RESIDUE_HEEL	Loading of shipment should not commence until residue heel has been properly disposed of. Residue Heel forms from sediment accumulated from previous shipments in the same container.
DEFERRED_DELIVERY	Delivery postponed by either the shipper or receiver.
DO_NOT_BREAK_DOWN	Instructions to not break down unitized freight during the shipping process.
DO_NOT_FREEZE	Shipment contents must not be exposed to freezing temperatures.
DO_NOT_SPLIT_SHIPMENT	Shipment must not be broken or split into multiple shipments.
DO_NOT_STACK	Shipment contents cannot be stacked or piled on top or underneath any other shipment contents.
DROP_OFF_DELIVERY	Delivery location requires equipment to be dropped.
DROP_YARD	A yard location where equipment can be dropped.
EXCLUSIVE_USE_OF_VEHICLE	Use of the equipment is limited only to the specific shipment.
EXPEDITED_SERVICE	Monitored to facilitate quicker service.
EXTRA_DRIVER	Additional driver required to meet service requirements.
FRAGILE_HANDLE_WITH_CARE	Shipment contents are fragile and extra care should be taken during shipping.
GUARANTEED	Delivery of the shipment is guaranteed for a specific date and/or time.
HEAT	Shipment requires heat to maintain contents condition for conveyance and/or delivery.
HEAT_IN_TRANSIT	Shipment will be conveyed using equipment equipped with a heating system.
HEAT_SPECIAL	Special Heating Equipment necessary to maintain shipment temperature or storage and/or delivery.
HEAT_WITH_STEAM	Safety concerns pertaining to a volatile component of the shipment requires steam heating equipment.
INSIDE_PICKUP	Pickup done within a structure.
KEEP_MATERIAL_DRY	Shipment contents cannot be allowed to get wet, must be kept dry.
LOAD_ON_TOP_OF_RESIDUE_HEEL	Motor Fuel shipment is to be loaded on top of a residue heel. Residue Heel forms from sediment accumulated from previous shipments in the same container.
LOADED_TO_FULL_VISIBLE_CAPACITY	Assure equipment is visibly loaded to full capacity.
NEXT_DAY_DELIVERY	Shipment must be delivered within 24 business hours of pickup at the shipper.
NOTIFY_CONSIGNEE_BEFORE_DELIVERY	Carrier must contact delivery location prior to arriving to arrange delivery appointment.
PERISHABLE	Shipment contents are perishable and special care should be used to deliver it.
PM_DELIVERY_REQUIRED	Delivery must be made in the PM (afternoon or evening) local time.
PROTECT_FROM_HEAT	Shipment contents should avoid heat, as defined by shipper, and may require equipment equipped with cooling system.
REFRIGERATED	Shipment must use equipment equipped with cooling system.

Business Solution Design

Code Name	Code Description
RESIDENTIAL_DELIVERY	Delivery is in residential area.
SECURITY_SIGNATURE_SERVICE	Delivery requirements to assure security signature on paperwork.
SECOND_DAY_DELIVERY	Shipment must be delivered within 48 business hours of pickup at the shipper.
SINGLE_SHIPMENT	One shipment tendered to the carrier.
TEMPERATURE_CONTROL	Shipment must use equipment equipped with heating and/or cooling systems to keep the contents within a temperature range as defined by the shipper.
TOP_FREIGHT_ONLY	Shipment contents may be stacked on top of other contents, but may not have any other contents stacked or piled on top of it.

Code List Name	Code List Description
Stop Date and Time Type Code List	Codes specifying type of date and/or time relating to planned shipment events.
Code Name	Code Description
APPOINTMENT_GRANTED	Appointment time is approved and confirmed.
APPOINTMENT_SCHEDULED	Appointment is scheduled and may need confirmation.
DELIVER_BY	Shipment must be delivered by the specified date and/or time.
DELIVER_NO_LATER_THAN	Shipment must be delivered by the date and/or time specified or earlier, but not later.
DELIVER_NOT_BEFORE	Shipment must be delivered by the date and/or time specified or earlier, but not before.
REQUESTED	Request for pick up or delivery date and/or time.
REQUESTED_SCHEDULED	Request for scheduled pick up or delivery and/or time.
SCHEDULED	Scheduled pick up or delivery and/or time
SHIP_NO_LATER_THAN	Shipment must be picked-up by the specified date and/or time or earlier, but not later.
SHIP_NOT_BEFORE	Shipment must be picked-up by the specified date and/or time or later, but not before.

Code List Name	Code List Description
Stop Type Code List	Codes specifying the reason for the stop.
Code Name	Code Description
COMPLETE_LOAD	Shipment will be considered completely loaded at this stop, no other pick-up stops will occur after this stop during the shipment.
COMPLETE_UNLOAD	Shipment will be considered completely unloaded at this stop, no other delivery stops will occur after this stop during the movement of the shipment.
PARTIAL_LOAD	Shipment will be considered partially loaded at this stop, more pick-up stops are expected to occur after this stop during the shipment.
PARTIAL_UNLOAD	Shipment will be considered partially unloaded at this stop, more delivery stops are expected to occur after this stop during the shipment.
REPOSITION	Empty equipment or tractor without trailer re-positioned.

Business Solution Design

Code List Name	Code List Description
Tender Purpose List	Codes identifying purpose of the load tender.
Code Name	Code Description
CANCEL_TO_BE_REISSUED	The load tender has been cancelled, but will be reissued right away under a separate message.
CANCELLATION	The load tender has been cancelled.
CONFIRMATION	Formal approval for pick up and delivery.
FINAL_TRANSMISSION	Last communication from the originator of the tender for a continuous move.
ORIGINAL	This is the first occurrence of this load tender issued to this carrier.
PROPOSED	Suggested load tender, for planning purposes only, and not intended for executing of the tender.
REPLACE	This load tender replaces the previous load tender in it's entirety.

Code List Name	Code List Description
Truckload Special Service Code List	Codes identifying the special service.
Code Name	Code Description
CANADIAN_CUSTOMS_SELF_ASSESSMENT	Shipment which complies with Canadian Customs requirements for the CSA, customs self assessment, program.
CARRIER_LOAD_AND_COUNT	Carrier is responsible for loading the shipment and counting its contents at the shipping location.
CARRIER_UNLOAD	Carrier is responsible for unloading the shipment at the delivery location.
CONSIGNEE_UNLOAD	Consignee is responsible for unloading the shipment at the delivery location.
DELIVERY	Carrier is responsible for transferring custody of the shipment to the consignee and recording a proof of delivery.
DRIVER_ASSISTED_UNLOADING	Carrier driver is responsible to assist with the unloading of the shipment at the delivery location.
DROP_AND_HOOK_RECEIVING	Location requires drop of inbound trailer and hook to outbound trailer.
DROP_DOCK	Carrier will deliver shipment and trailer equipment to dock, then drop and leave the equipment there without unloading the contents at the delivery location.
DROP_YARD	Carrier will deliver shipment and trailer equipment to the delivery location's yard, then drop and leave the equipment there without unloading the contents at the delivery location.
EXPEDITED_SERVICE	Monitored to facilitate quicker service.
INSIDE_DELIVERY	Delivery done within a structure.
INSIDE_PICKUP	Pickup done within a structure.
LIFT_GATE	Equipment used for the shipment must be equipped with a lift gate.
LOADING_SERVICE	Ship from location provides loading service vs hand loading by driver.
PALLETIZING	Shipment contents will need to be loaded into pallets prior to loading in the shipment equipment.
SHIPPER_LOAD_AND_COUNT	Shipper is responsible for loading the shipment and counting its contents at the shipping location.
SHIPPER_LOAD_CARRIER_COUNT	Shipper is responsible for loading the shipment, but carrier is responsible for counting its contents at the shipping location.
SHIPPER_LOAD_CONSIGNEE_UNLOAD	Shipper is responsible for loading the shipment at the shipping location, and Consignee is responsible for unloading the shipment at the delivery location.
SLIP_SHEET_TRUCK	Shipment contents will be loaded using slip sheets.
TANK_WASH_REQUIRED	Tank must be washed prior to picking up shipment contents at the shipment location.
TEMPERATURE_PROTECTION	Equipment used in the shipment must be equipped with heating and/or cooling systems to keep the shipment contents within the temperature range defined by the shipper.
THIRD_PARTY_PALLETS	Pallets are owned by 3 rd party vendor.

1.6 Business Document Example

A sample Full Truckload Load Tender examples is listed below to aid in visualizing the message. This is only a sample and not all components of the messages were used. **Blue Bold** font represents the sample data.

Full Truckload Load Tender Example

Full Truckload Load Tender

Tender Purpose Type: '**FINAL_TRANSMISSION**'

Must Respond By Date Time: '**2004-10-31T08:43:00-05:00**'

Declared Value: '**15000**' Currency '**USD**'

Transportation Payment Method: '**PREPAID_BY_CONSIGNOR**'

Party Identification (carrier Identification)

GLN: '**1234567890123**'

Document

Creation Date Time: '**2004-10-25T10:43:00-05:00**'

Document Status: '**ORIGINAL**'

Entity Identification (Full Truckload Load Tender Identification)

Unique Creator Identification: '**LT-000001**'

Party Identification (Content Owner (GLN)): '**0999999999991**'

FTL Shipment Information

Shipment Information

Shipment Quantity '**150**' Unit of Measure '**Carton**'

Shipment Gross Weight: '**25000**' Unit of Measure '**Pounds**' (1st Instance)

Shipment Gross Weight: '**11339**' Unit of Measure '**Kilograms**' (2nd Instance)

Shipment Special Handling: '**AM_DELIVERY_REQUIREMENT**' (1st instance)

Shipment Special Handling: '**FRAGILE_HANDLE_WITH_CARE**' (2nd instance)

Shipment Special Handling: '**EXTRA_DRIVER**' (3rd Instance)

Truckload Special Service: '**DRIVER_ASSISTED_UNLOADING**'

Transportation Reference

Transportation Reference Identification: '**3391**'

Transportation Reference Type: '**MASTER_BILL_OF_LADING**'

Transportation Reference Identification: '**64824**'

Transportation Reference Type: '**BOOKING_NUMBER**'

Equipment Information (1st instance)

Equipment Type: '**CONTAINER**'

Equipment Length: Value '**53**' Unit Of Measure '**FOOT**'

Business Solution Design

Equipment Information (2nd Instance)
Equipment Type: **'TRACTOR'**
Equipment Identification: **'PETERBILT'**

Location Information (ship To)
City: **'SmallCityTowne'**
Country ISO Code: **'US'**
Language of the Party: **'ENG'**
Name: **'Mighty Manufacturer'**
Currency: **'USD'**
Street Address One: **'888 Global Street'**
Street Address Two: **'Suite 444'**
State: **'NE'**

Beginning of Detail Level

Shipment Stop Group
Stop sequence: **'1'**
Stop Type Code: **'COMPLETE_LOAD'**

Location Information (Ship From)
City: **'Metropolis'**
Country ISO Code: **'US'**
Language of the Party: **'ENG'**
Name: **'Bullet Distribution Centre'**
State: **'KS'**
Street Address One: **'333 Halo Avenue'**
Street Address Two: **'Halo Commercial Park'**

FTL Shipment Information (Shipment Detail)
Shipment Quantity **'150'** Unit of Measure **'Carton'**
Shipment Gross Weight: **'25000'** Unit of Measure **'Pounds'** (1st Instance)
Shipment Gross Weight: **'11339'** Unit of Measure **'Kilograms'** (2nd Instance)
Shipment Special Handling: **'AM_DELIVERY_REQUIREMENT'** (1ST instance)
Shipment Special Handling: **'FRAGILE_HANDLE_WITH_CARE'** (2nd instance)
Shipment Special Handling: **'EXTRA_DRIVER'** (3rd Instance)
Truckload Special Service: **'DRIVER_ASSISTED_UNLOADING'**

Pallet Information
Pallet Exchange Code: **'EXCHANGE_PALLETS'**
Pallet Quantity: **'24'**

Purchase Order Information
(1st instance)
Is Purchase Order Quantity On Pallet: **'YES'**
Purchase Order Number: **'20053391'**

Business Solution Design

Purchase Order Weight: Value **'3000'** Unit Of Measure **'Pounds'**

(2nd instance)

Is Purchase Order Quantity On Pallet: **'YES'**

Purchase Order Number: **'20050221'**

Purchase Order Weight: Value **'1000'** Unit Of Measure **'Pounds'**

***end of 1st pickup location and beginning of stop 2 ***

Shipment Stop Group

Stop sequence: **'2'**

Stop Type Code: **'PARITAL_UNLOAD'**

Location Information (Ship To)

City: **'Nashville'**

Country ISO Code: **'US'**

Language of the Party: **'ENG'**

Name: **'Bullet Distribution Centre'**

State: **'TN'**

Street Address One: **'456 Volunteer Avenue'**

FTL Shipment Information

Shipment Quantity **'100'** Unit of Measure **'Carton'**

Shipment Gross Weight: **'1666'** Unit of Measure **'Pounds'**

Shipment Special Handling: **'AM_DELIVERY_REQUIREMENT'** (1ST instance)

Truckload Special Service: **'DRIVER_ASSISTED_UNLOADING'**

Pallet Information

Pallet Exchange Code: **'EXCHANGE_PALLETS'**

Pallet Quantity: **'15'**

Stop Information

Stop Date And Time: **'2004-11-03T07:00:00-05:00'**

Stop Date And Time Type: **'DELIVER_NOT_BEFORE'** Stop Information

Stop Date And Time: **'2004-11-01T12:00:00-05:00'**

Stop Date And Time Type: **'DELIVER_NO_LATER_THAN'**

Transportation Reference

Transportation Reference Identification: **'1205'**

Transportation Reference Type: **'APPOINTMENT_NUMBER'**

Purchase Order Information

Is Purchase Order Quantity On Pallet: **'YES'**

Purchase Order Number: **'20053391'**

Purchase Order Weight: Value **'1000'** Unit Of Measure **'Pounds'**

***end of 2nd stop and beginning of stop 3 ***

Business Solution Design

Shipment Stop Group
Stop sequence: '3'
Stop Type Code: 'COMPLETE_UNLOAD'

Location Information (Ship To)
City: 'Memphis'
Country ISO Code: 'US'
Language of the Party: 'ENG'
Name: 'Blue Suede Shoes Distribution Centre'
State: 'TN'
Street Address One: '333 Memory Drive'

FTL Shipment Information
Shipment Net Weight: '8333' Unit of Measure 'Pounds'
Shipment Special Handling: 'AM_DELIVERY_REQUIREMENT' (1ST instance)
Truckload Special Service: 'DRIVER_ASSISTED_UNLOADING'

Purchase Order Information
Is Purchase Order Quantity On Pallet: 'YES'
Purchase Order Number: '20050221'
Purchase Order Weight: Value '6000' Unit Of Measure 'Pounds'

Pallet Information
Pallet Exchange Code: 'EXCHANGE_PALLETS'
Pallet Quantity: '8'

Stop Information
Stop Date And Time: '2004-11-04T07:00:00-05:00'
Stop Date And Time Type: 'DELIVER_NOT_BEFORE' Stop Information
Stop Date And Time: '2004-11-04T12:00:00-05:00'
Stop Date And Time Type: 'DELIVER_NO_LATER_THAN'

Transportation Reference
Transportation Reference Identification: 'ELVIS'
Transportation Reference Type: 'APPOINTMENT_NUMBER'

1.7 Implementation Considerations

None

Business Solution Design

1.8 Testing

1.8.1 Pass / Fail Criteria

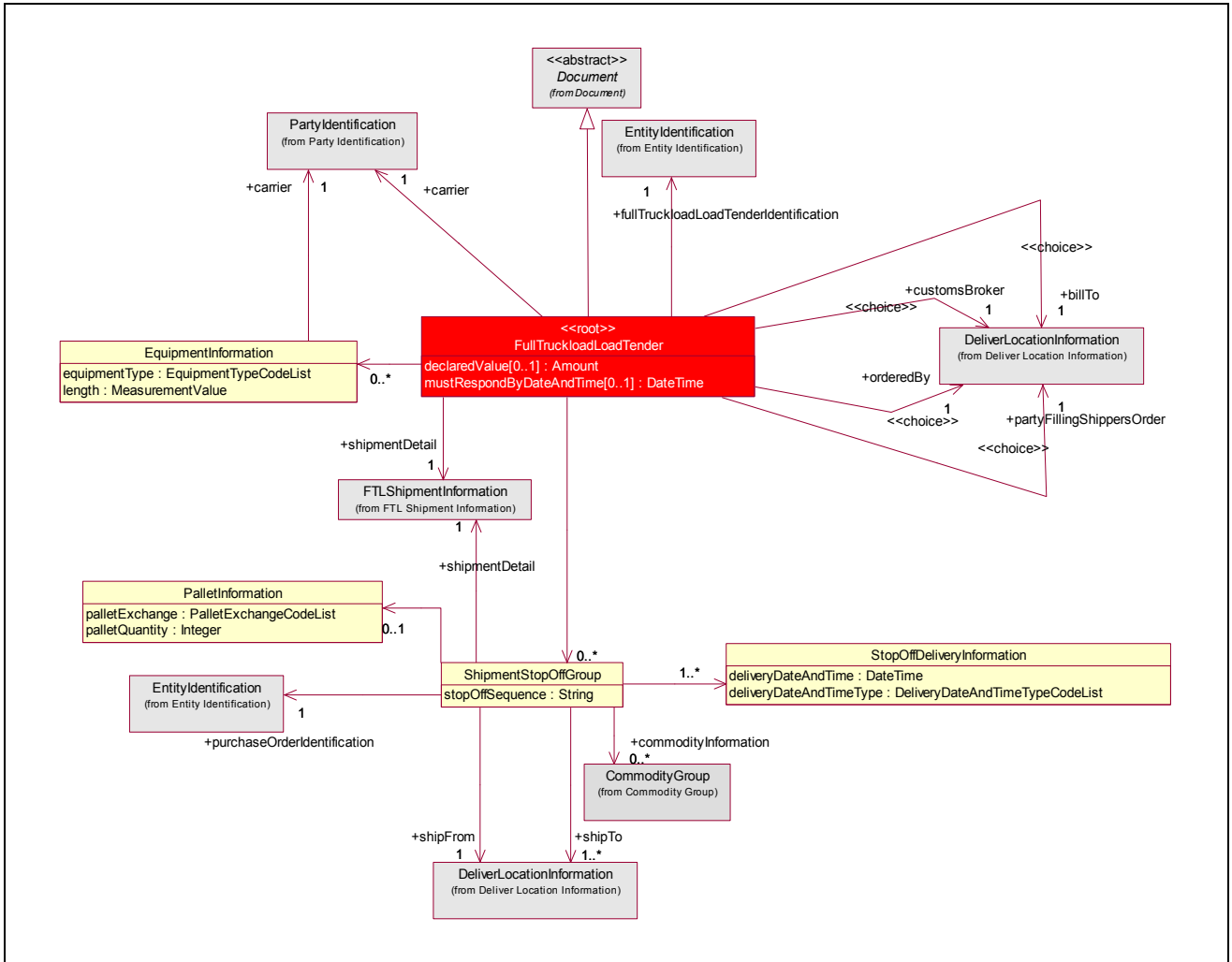
Number	Test Criteria	Related Requirement	Design Element	Pass Criteria	Fail Criteria
1	None				

1.8.2 Test Data

Attribute	Value
None	

1.9 Appendices

1.9.1 Full Truckload Tender BMS Version 2.0.1



1.9.2 Change Summary from 2.1 BMS (After/New) against 2.0.1 BMS (Before).

Description of Change	Change Type	Rationale
1. Added new classes (2.1) <ol style="list-style-type: none"> 1. TransportationReference 2. HazardousShipmentInformation 3. PurchaseOrderInformation 	Added New Classes	Based on 2.1 requirements
2. Renamed <ul style="list-style-type: none"> • Class FROM (2.0.1): DeliverLocationInformation • Class TO (2.1): LocationInformation 	Renamed Classes	Replaced Choice Association with regular associations.
3. Added Attribute in Class FullTruckloadLoadTender <ol style="list-style-type: none"> 1. tenderPurposeType:TenderPurposeList 2. transportationPaymentMethod[0..1]:TransportationPaymentMethodCodeList 	Added Attribute	Based on 2.1 requirements
4. Added Association (2.1) From Class: FullTruckloadLoadTender <ol style="list-style-type: none"> 1. TO: HazardousShipmentInformation(0..1) 2. TO: TransportationReference(0..*) 	Added Associations	Based on 2.1 requirements
5. Replaced association (2.0.1) from EquipmentInformation to PartyIdentification with role of carrier(1..1) TO: added an attribute equipmentIdentification[0..1]:String	Replaced	Based on 2.1 requirements
6. Changed from Mandatory to Optional for the equipmentLength.	Changed Multiplicity	Based on 2.1 requirements
7. Added Attribute in Class ShipmentStopGroup <ol style="list-style-type: none"> 1. stopTypeCode:StopTypeCodeList 	Added Attribute	Based on 2.1 requirements

Business Solution Design

Description of Change	Change Type	Rationale
<p>8. Added Association (2.1) From Class: ShipmentStopGroup</p> <p>1. TO: PurchaseOrderInformation(0..*) 2. TO: TransportationReference(0..*)</p>	Added Associations	Based on 2.1 requirements
<p>9. Changed from Mandatory (1..*) to Optional(0..2) for the association FROM: ShipmentStopGroup TO: StopInformation</p>	Changed Multiplicity	Based on 2.1 requirements
<p>10. Changed from Regular association to Choice Association FROM: ShipmentStopGroup TO: LocationInformation</p>	Changed Multiplicity	Based on 2.1 requirements
<p>11. Deleted Association for (2.1) From: ShipmentStopOffGroup TO: EntityIdentification (+purchaseOrderIdentification1..1)</p>	Deleted and replaced with Change #8	Based on 2.1 requirements
<p>12. Changed from Mandatory (1..1) to Optional(0..1) for the association FROM: ShipmentStopGroup TO: FTLShipmentInformation</p>	Changed Multiplicity	Based on 2.1 requirements
<p>13. Renamed class FROM: ShipmentStopOffGroup (2.0.1) TO: ShipmentStopGroup (2.1)</p>	Renamed Class	Based on 2.1 requirements
<p>14. Added two optional (0..1) association from FullTruckloadLoadTender to LocationInformation</p> <ul style="list-style-type: none"> o Party to receive delivery order o Party to receive freight bill 	Added role names	Based on 2.1 requirements.
<p>15. Added three optional (0..1) association from CommodityGroup to MultiMeasurementValue</p> <ul style="list-style-type: none"> o NetWeight o Volume o Gross weight 	Added role names	Based on 2.1 requirements.
<p>16. Added an optional commodity package dimension.</p>	Addition	Based on 2.1 requirements.

1.10 Summary of Changes

(Details changes to BMS for each version by BMS Section)

Change	BMS Version	Associated CR Number
<ul style="list-style-type: none">• Added section 1.5.1 Data Description Related Requirements.• Added section 1.9 the Change Summary BMS V2.1 vs BMS V2.0.1• Added section 1.6 Sample Data <p><u>GDD Report</u></p> <ul style="list-style-type: none">• Fixed typographical errors in GDD.• Added equipmentInformation and shipmentStopGroup Associated• Changed grossVolume-→volume <p><u>Code List</u></p> <ul style="list-style-type: none">• Commodity Code List: NATIONAL_MOTOR_FREIGHT_CLASSIFICATION RECEIVERS_COMMODITY_CODE corrected to NATIONAL_MOTOR_FREIGHT_CLASSIFICATION• Equipment Type Code List: TRAILER_ELETRIC_HEAT corrected to TRAILER_ELECTRIC_HEAT• ShipmentSpecialHandlingCode List: RESIDENTAIL_DELIVERY corrected to REIDENTIAL_DELIVERY	0.1.2	

2 XML Technical Solution ITRG Packet

This section provides the specifications for the standards content ITRG approves. It is called the Technical Solution Design (TSD).

The Technical Solution Design contains:

- TSD Zip file Table of Contents
- Business Message Standard Section Technical Level GDD Report
- XSD (XML Schema Documents)
- XML Instance File and HTML Form View (XML and HTML files containing sample data specified in Section 1.6)

In the process of approving the Technical Solution Design, the ITRG will be provided the following artefacts:

- Any relevant Business Requirements Analysis Document (BRAD)
- Any relevant Business Requirements Document (BRD)
- Section 1 of Business Message Standard (Business Solution Design)
- Comment Resolution Template from Technical Public Review
- XML Test Report
- Change Request

Other informative or reference documents