

Business Message Standard (BMS)

for

Receiving Advice

**BRG: Deliver
IRT: Upstream Standards**

BMS Release: 2.1

Document Version: 3.2.4

Date: 19.08.2005



Change Request Reference

Refer to Change Request (CR) Number(s):	CR04-000211
CR Submitter(s):	Regenald Kramer
Date of CR Submission to GSMP:	05.11.2004

Business Requirements Document (BRAD) Reference

BRAD Title:	BRAD Upstream Standards – Despatch, Receipt & Consumption
BRAD Date:	29.11.2004
BRAD Version:	0.1.1

BRAD Title:	BRD Receiving Advice – Business Requirement Document
BRAD Date:	10.12.2004
BRAD Version:	2.1.1

Document Summary

Document Number:	3.2.4
Document Title:	Receiving Advice
Owner:	BRG: Deliver IRT: Upstream Standards
Status:	(check one box) <input type="checkbox"/> DRAFT <input checked="" type="checkbox"/> Approved
BMS Template Version:	1.2
Targeted BMS Publication Version	2.1

Document Change History

Note: During development include revisions in history. Upon Approval, eliminate revisions and include only delta from previous version.

Date of Change	Version	Changed By	Reason for Change	Summary of Change	Model Build #
31.12.2004	3.0.0	Rob Toole		Completed BSD by adding GDD information and updated class diagram	Not applicable
01.03.2005	3.1.1	Coen Janssen	UIM	1 st draft including UIM requirements and ebMeat consequences.	Not applicable
04.03.2005	3.1.2	Coen Janssen	RTI Upstream Standards and DTG review	Several changes to chapter 7. Included example in chapter 8.	Not applicable
25.03.2005	3.1.3	Coen Janssen	Comments BRG Deliver (DTG)	Several changes to chapter 7.	Not applicable
21.04.2005	3.2.0	Coen Janssen	Public review and comments made during Vienna meeting	Changed rolenames in use cases: Ship To → Receiver, Ship From → Shipper Functional changes: see chapter 12	Not applicable
02.06.2005	3.2.1	John Ryu	Updated Class Diagrams based on peer review 6700 Updated needed to GDD and text of document per peer review 6700	Aesthetic changes and alphabetized according to Modelling Best Practices.	Model P4CL: 6178 BSD P4CL: 6722
21.07.2005	3.2.2	Coen Janssen	Technical Design Public Review	Several cosmetic changes Fixed requirements references in paragraph 1.5.1	
19.08.2005	3.2.3	Coen Janssen	Technical Design Public Review	Functional changes, see paragraph 1.10. Adjusted the example in paragraph 1.6 accordingly.	
24.04.2007	3.2.4	Giovanni Biffi	Editorial Changes	Minor Editorial Changes to the Document	N/A

Business Message Standard

Table of contents

Chapter	Page
1 Business Solution	1
1.1 Business Domain View	1
1.1.1 Problem Statement / Business Need	1
1.1.2 Objective	1
1.1.3 Audience	1
1.1.4 Artefacts	1
1.1.5 References	2
1.1.6 Acknowledgements	2
1.1.6.1 IRT Members	2
1.1.6.2 BRG Members	3
1.1.6.3 ITRG Members	3
1.1.6.4 Design Team Members	3
1.2 Business Context	4
1.3 Additional Technical Requirements Analysis	4
1.3.1 Technical Requirements (optional)	4
1.4 Business Transaction View	4
1.4.1 Business Transaction RECEIVING ADVICE	4
1.4.2 Business Transaction Use Case Diagram	5
1.4.3 Use Case Description	5
1.4.4 Business Transaction Activity Diagram(s)	6
1.4.5 Business Transaction Sequence Diagram(s) (optional)	6
1.4.6 Business Transaction RECEIPT NOTIFICATION	7
1.4.7 Business Transaction Use Case Diagram	7
1.4.8 Use Case Description	7
1.4.9 Business Transaction Activity Diagram(s)	8
1.4.10 Business Transaction Sequence Diagram(s) (optional)	8
1.5 Information Model	9
1.5.1 Data Description	9
1.5.2 GDD Report	10
1.5.3 Class Diagrams	14

Business Message Standard

Table of contents

1.5.4 Code Lists..... 16

1.6 Business Document Example..... 17

1.7 Implementation Considerations 18

1.8 Testing..... 18

 1.8.1 Pass / Fail Criteria 18

 1.8.2 Test Data 18

1.9 Appendices..... 19

1.10 Summary of Changes..... 19

2 Technical Solution Design..... 20

1 Business Solution

1.1 Business Domain View

1.1.1 Problem Statement / Business Need

(States the business need, establishing the context for the business transactions and information requirements.)

The business process of shipping and receiving requires the actors in this process to share information regarding goods shipped and goods received. The Receiving Advice is developed to provide the receiver of the shipment the capability to inform the shipper of actual goods received, compared to what was advised as being sent. Typical business uses of the receipt information can include – updating of inventory, identifying shipping discrepancies, and adjusting orders and related invoicing.

The Receiving Advice should have the capability to link to the information that makes up a Despatch Advice or Shipping Document, which provides detailed information about the content of a shipment of goods from the Shipper to the Receiver. With the capability of this link comes the ability to compare exactly what was received to what was indicated as sent on the Despatch Advice or Shipping Document. The established link between receipt and despatch information enables the comparison and in turn allows the Receiving Advice to contain a range of comparison information, from general to specific.

1.1.2 Objective

The objective of the Receiving Advice is to satisfy the business need as stated in section 1.1 above as well as to provide a format that is flexible to serve the actors' process goals based on trading partner agreements.

For example, the Receiving Advice can be used in correlation with the Despatch Advice or other shipment documentation to:

- Provide a simple acknowledgment that goods have been received
- Provide a detailed verification of actual goods received
- Provide notification of exceptions between shipment documentation (e.g. Despatch Advice and BOL) and actual receipts

(Above is standards text for the objective.)

1.1.3 Audience

(List of expected internal and external users of the BMS expressed as stakeholder.)

Retailers, manufacturers, warehouses, material suppliers and any other third party such as a logistic service or 3PL provider involved in the despatch and receipt of goods.

1.1.4 Artefacts

(List of the artefacts that are used as either an input to the process or an output from the process, also indicating the different states that the artefact takes during the process.)

Business Solution Design

Artefact name	State	Artefact / State description

1.1.5 References

	Reference Name	Description
[Ref1]	BMS Common Library	The documented design of components that are used in multiple messages.
[Ref2]	BRAD Upstream Standards – Despatch, Receipt & Consumption 0.1.1	
[Ref3]	BRAD Receiving Advice 2.1.1	

1.1.6 Acknowledgements

(List of the individuals—and their companies—who participated in the creation, review and approval of this BMS.)

1.1.6.1 IRT Members

Function	Name	Company / organisation
IRT Chair	Fred Kempkes	Unilever
IRT Participant	Kevin Zeng	Procter & Gamble
IRT Participant	Stephen Bell	CPG Market
IRT Participant	Roland Dachs, Olivier Grienenberger, Don Reed	Crown Cork
IRT Participant	Arthur Doldersum	SCA
IRT Participant	James Kimber	General Mills, Inc.
IRT Participant	Kristen Halwachs	UCCnet
IRT Participant	Nicola Comiotto, Menno Smit	Nestlé
IRT Participant	Pawel Solowinski	Kappa Packaging
IRT Participant	Peter Broend, Johannes Lundgren	Novozymes
IRT Participant	Paul Moodey	Johnson & Johnson
IRT Participant	Wouter Crul	Nspyre
IRT Participant	Thierry Baillif, Gabriel Galeazzi	Firmenich
IRT Participant	Jan Peter Klijn	Royal Sens
IRT Participant	Yasushi Kiyama	Ajinomoto Co.
IRT Participant	Georges Socquet	Givaudan

Business Solution Design

1.1.6.2 BRG Members

Function	Name	Company / organisation
BRG Chair	Sue Donarski (Co-chair)	Schneider
BRG Chair	Debra Noyes (Co-Chair)	Johnsonville Sausages
BRG Member	Mike Osiecki	Best Buy
BRG Member	Kari Melhus	Target
BRG Member	Wayne Gingerich	Werner
BRG Member	Jeff Miller	Kraft
BRG Member	Roman Gural	UPS
BRG Member	Bob Robertson	VCF
BRG Member	Shanda Marvin	Procter & Gamble
BRG Member	Regina De Baker	Watkins Motor Line
BRG Member	David Burns	INTTRA
BRG Member	Apostolos Xiradakis	Unilever
BRG Member	Thorsten Kirschner	GS1 Germany
BRG Member	Aart Koning	Albert Heijn
BRG Member	Jean-François Fusco	Aexxdis
BRG Member	Marco Van Der Lee	GS1 Netherlands
BRG Member	Jeofrey Cubillos	IBC Solutions
BRG Member	Tamari Tashiro	GS1 Japan
BRG Member	Tan Jin Soon	GS1 Singapore
BRG Manager	Bruno Julien (BRG Manager)	GS1 France

1.1.6.3 ITRG Members

Function	Name	Company / organisation
ITRG Chair		
ITRG Member		
ITRG Member		
ITRG Member		
...		

1.1.6.4 Design Team Members

Function	Name	Organisation
Modeller	Coen Janssen	GS1 Netherlands
XML Technical Designer	Dipan Anarkat	GS1

Business Solution Design

EANCOM Technical Designer	Marco Schuyt	GS1 Netherlands
Peer Reviewer	John Ryu	GS1

1.2 Business Context

(Note: The context of the business)

Context Category	Value(s)
Industry	All, Consumer Packaged Goods All
Geopolitical	All, Global, Europe, Unites States, Japan, UK Global
Product	All, Direct Materials, Food, Non-Food, Hard lines, Apparel All
Process	All, Order (Direct To Consumer), Order (Direct Store Delivery), Order, Pay (Self Billing), Deliver (Direct Store Delivery) Deliver
Official Constraints	None, Value Added Tax, Sales Tax None
Roles	Buyer, Seller, Ship From, Ship To, Payer Payee, Data Source, Data Recipient Shipper, Ship From, Receiver, Ship To
System Capabilities	All, EANCOM, XML, AIDC, EPC-network EAN.UCC System EANCOM, XML

If no value use, the default of "All" except for Official Constraints where default is "None".

(Process, Geopolitical, Industry, User Role (Retailer, Supplier, etc.))

If context cannot be specified, select from the context classification code list in the GDD.).

1.3 Additional Technical Requirements Analysis

1.3.1 Technical Requirements (optional)

(User Interface, Security, Performance, Quality, etc.)

Number	Statement	Rationale
1.	No Technical Requirements	

1.4 Business Transaction View

1.4.1 Business Transaction RECEIVING ADVICE

When the Receiver receives a shipment of goods from the Shipper, the Receiver compares the received goods to what was advised as despatched on the despatch advice or shipping documents, and creates and sends a Receiving Advice. The Receiver has the following options to choose from regarding what the Receiving Advice may contain:

- full –details- Includes qualitative and/or quantitative details regarding everything received (all line items) whether or not there were exceptions between what was received and what was advised as being sent.
- exceptions – Includes only qualitative and/or quantitative exceptions between what was received and what was advised as being sent.
- confirmation- The acceptance of the receipt of goods.

1.4.2 Business Transaction Use Case Diagram

Detailed Use Case for generic use of the message. Focuses on commands associated with business solution.

Note: Each Use Case shall be given a consecutive paragraph number (e.g., 2.4.1) and heading.)

Not available

Figure 1 – Use Case Diagram: Business Transaction

1.4.3 Use Case Description

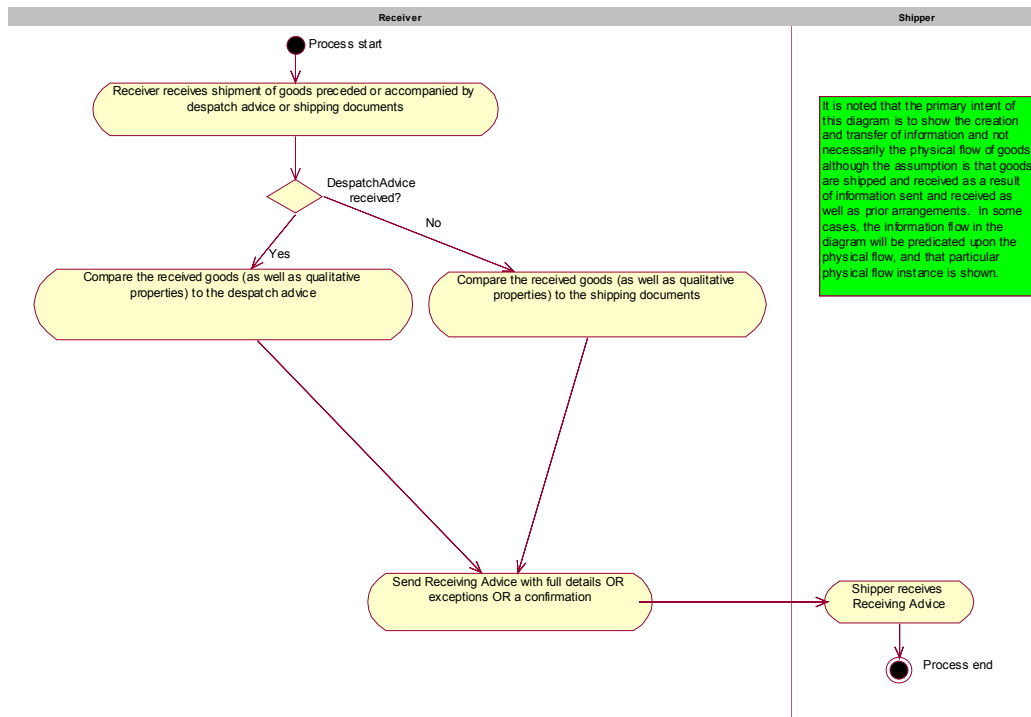
Use Case ID										
Use Case Name	Create and Send Receiving Advice									
Use Case Description	Describes a complete process whereby a Receiver generates a Receiving Advice based on information gained from received goods and physical or electronic documents from a Shipper.									
Actors (Goal)	Receiver and Shipper									
Performance Goals	None									
Preconditions	Master data alignment of locations (GLNs) and products (GTINs).									
Post conditions	Indication of exceptions, full-detailed comparison or confirmation between goods received and goods advised as despatched.									
Scenario	<p>Begins when:</p> <p>The Receiver receives a shipment of goods accompanied or preceded by the Despatch Advice or Shipping Documents.</p> <p>Continues with:</p> <table border="1"> <thead> <tr> <th>Step #</th> <th>Actor</th> <th>Activity Step</th> </tr> </thead> <tbody> <tr> <td>1.</td> <td>Receiver</td> <td>Sends Receiving Advice message to the Shipper</td> </tr> <tr> <td>2.</td> <td>Shipper</td> <td>Receives Receiving Advice Message</td> </tr> </tbody> </table> <p>Ends when:</p> <p>the Receiver compares the received goods (as well as qualitative properties) to what was advised as being sent on the despatch advice or shipping documents.</p>	Step #	Actor	Activity Step	1.	Receiver	Sends Receiving Advice message to the Shipper	2.	Shipper	Receives Receiving Advice Message
Step #	Actor	Activity Step								
1.	Receiver	Sends Receiving Advice message to the Shipper								
2.	Shipper	Receives Receiving Advice Message								

Business Solution Design

Alternative Scenario	<i>(any alternatives to the above scenario)</i>		
	Step #	Actor	Activity Step
	1.		
	2.		
Business Transaction Rules	1.	Receiving Advice will include full details OR exceptions OR a confirmation of the received goods compared to what was advised as being despatched on the despatch advice or shipping documents	

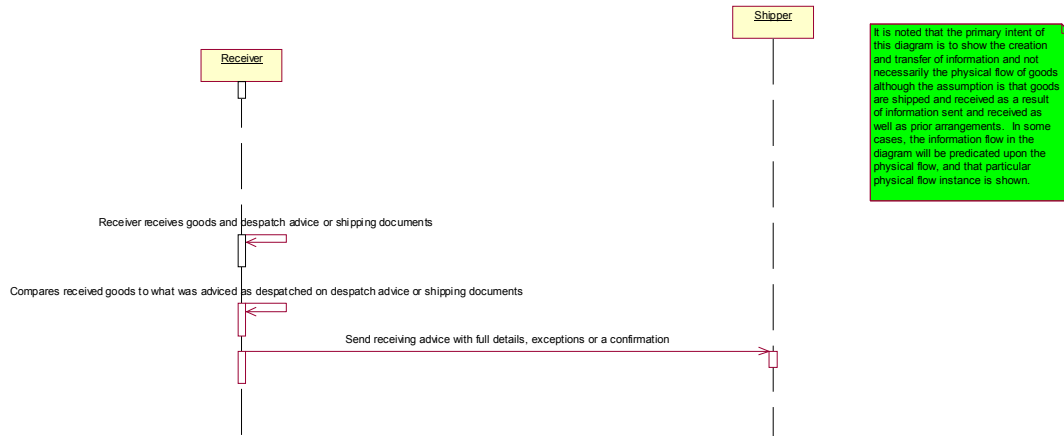
1.4.4 Business Transaction Activity Diagram(s)

(Note: Activity diagrams are optional. The business process modeller shall determine the use and number of activity diagrams included in the BMS. Each activity diagram shall be given a consecutive paragraph number (e.g., 2.4.1) and heading.)



1.4.5 Business Transaction Sequence Diagram(s) (optional)

(Note: Sequence diagrams are optional. The business process modeller shall determine the use and number of sequence diagrams included. Each sequence diagram shall be given a consecutive paragraph number (e.g., 2.5.1) and heading.)



1.4.6 Business Transaction RECEIPT NOTIFICATION

1.4.7 Business Transaction Use Case Diagram

Detailed Use Case for generic use of the message. Focuses on commands associated with business solution.

Note: Each Use Case shall be given a consecutive paragraph number (e.g., 2.4.1) and heading.)

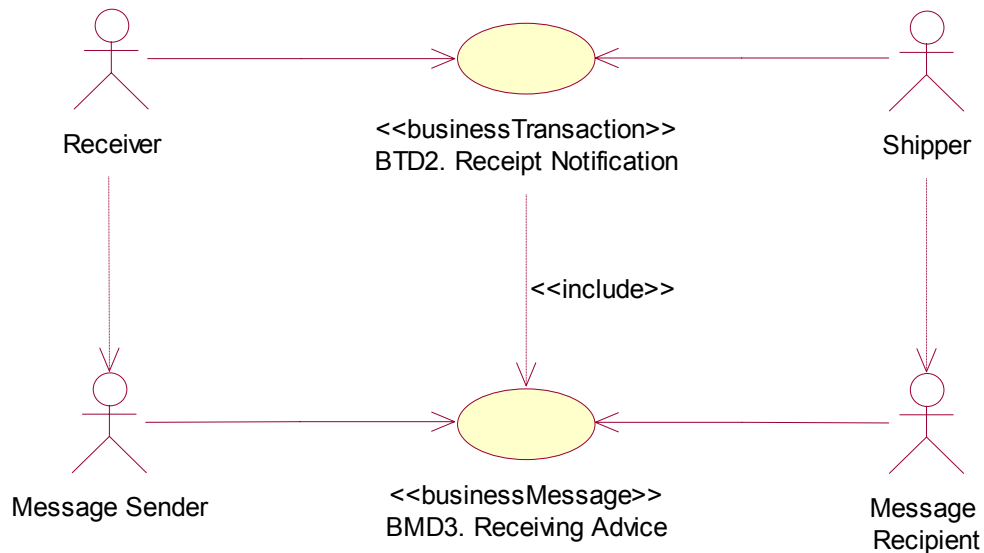


Figure 2 – Use Case Diagram: Business Transaction

1.4.8 Use Case Description

Use Case ID	BTD2
Use Case Name	Receipt Notification

Business Solution Design

Use Case Description										
Actors (Goal)	Receiver: To inform the Shipper about the contents of a received shipment. Shipper: To be informed about the contents and conditions of the shipment at arrival at the destination.									
Performance Goals	The receipt notification must be sent shortly after the receipt of the shipment in order to avoid invoicing errors.									
Preconditions	GOODS: RECEIVED, COUNTED AND CHECKED DISPATCH NOTIFICATION: RECEIVED (BY RECEIVER)									
Post conditions	RECEIPT NOTIFICATION: RECEIVED (BY SHIPPER)									
Scenario	<p>Begins when:</p> <p>Continues with:</p> <table border="1"> <thead> <tr> <th>Step #</th> <th>Actor</th> <th>Activity Step</th> </tr> </thead> <tbody> <tr> <td>1.</td> <td>Re-ceiver</td> <td>Sends Receiving Advice to the Ship From party.</td> </tr> <tr> <td>2.</td> <td>Shipper</td> <td>Receives the Receiving Advice.</td> </tr> </tbody> </table> <p>Ends when:</p>	Step #	Actor	Activity Step	1.	Re-ceiver	Sends Receiving Advice to the Ship From party.	2.	Shipper	Receives the Receiving Advice.
Step #	Actor	Activity Step								
1.	Re-ceiver	Sends Receiving Advice to the Ship From party.								
2.	Shipper	Receives the Receiving Advice.								
Alternative Scenario	<p><i>(any alternatives to the above scenario)</i></p> <table border="1"> <thead> <tr> <th>Step #</th> <th>Actor</th> <th>Activity Step</th> </tr> </thead> <tbody> <tr> <td>1.</td> <td></td> <td></td> </tr> <tr> <td>2.</td> <td></td> <td></td> </tr> </tbody> </table>	Step #	Actor	Activity Step	1.			2.		
Step #	Actor	Activity Step								
1.										
2.										
Business Transaction Rules	<table border="1"> <tbody> <tr> <td>1.</td> <td></td> </tr> <tr> <td>2.</td> <td></td> </tr> </tbody> </table>	1.		2.						
1.										
2.										

1.4.9 Business Transaction Activity Diagram(s)

(Note: Activity diagrams are optional. The business process modeller shall determine the use and number of activity diagrams included in the BMS. Each activity diagram shall be given a consecutive paragraph number (e.g., 2.4.1) and heading.)

1.4.10 Business Transaction Sequence Diagram(s) (optional)

(Note: Sequence diagrams are optional. The business process modeller shall determine the use and number of sequence diagrams included. Each sequence diagram shall be given a consecutive paragraph number (e.g., 2.5.1) and heading.)

Business Solution Design

1.5 Information Model

1.5.1 Data Description

Class (ABIE)	Attribute (BBIE)	Association (ASBIE)	Secondary Class / Data Type	Related Requirement
ReceivingAdvice				
	reportingCode			[ref2] {7.2.1-9}
		<<is a>>	Document	[ref2] {7.2.1-2, 3}
		despatchAdvice	DocumentReference	[ref2] {7.2.1-10}
		receivingAdviceIdentification	EntityIdentification	[ref2] {7.2.1-1}
		carrier	PartyIdentification	[ref3]
		shipper	PartyIdentification	[ref2] {7.2.1-7}
		receiver	PartyIdentification	[ref2] {7.2.1-6}
		shipTo	PartyIdentification	[ref2] {7.2.1-8}
		shipFrom	PartyIdentification	New requirement added during technical public review.
		<<choice>>	ReceivingAdviceLogisticUnitLineItem	
		<<choice>>	ReceivingAdviceItemContainmentLineItem	
		billOfLadingNumber	Reference	[ref2] {7.2.1-11}
		consignmentIdentification	Reference	[ref2] {7.2.1-11}
		none	ReceiptInformation	
ReceivingAdviceLogisticUnitLineItem				
		<<is a>>	LogisticUnits	[ref2] {7.2.1-12, 14, 15}
		none	ReceivingAdviceItemContainmentLineItem	
ReceivingAdviceItemContainmentLineItem				
		<<is a>>	ItemContainment	[ref2] {7.2.1-12, 16, 17, 18, 19}
	quantityAccepted		Quantity	[ref2] {7.2.1-21}
	quantityDespatched		Quantity	[ref2] {7.2.1-22}
	quantityReceived		Quantity	[ref2] {7.2.1-20}
		despatchAdviceLine	DocumentLineReference	[ref2] {7.2.1-10}
		none	ReceivingConditionInformation	

Business Solution Design

Class (ABIE)	Attribute (BBIE)	Association (ASBIE)	Secondary Class / Data Type	Related Requirement
ReceivingConditionInformation				
	receivingCondition			[ref2] {7.2.1-23}
	receivingCondition-Quantity		Quantity	[ref2] {7.2.1-24, 25}
ReceiptInformation				
	despatchAdviceDeliveryDateTime			[ref3]
	receivingDateTime			[ref2] {7.2.1-4}

1.5.2 GDD Report

Class (ABIE)	Attribute (BBIE)	Association (ASBIE)	Secondary Class / Data Type	Official Dictionary Entry Name	Definition	Multiplicity
ReceivingAdvice				Receiving Advice. Details	This is the root class for the Receiving Advice Message.	
	reporting-Code			Receiving Advice. Reporting_ Code. Reporting_ Code	Contains the type of receipt notification that is being communicated: partial or full.	1..1
		<<is a>>	Document	Receiving Advice. Inheritance_ Association. Electronic_ Document	No definition required	1..1
		despatchAdviceReference	DocumentReference	Receiving Advice. Despatch Advice Reference. Document Reference	Contains the reference to the despatch advice message to which the information in the receiving advice refers	0..1
		receivingAdviceIdentification	EntityIdentification	Receiving Advice. Receiving Advice Identification. Entity Identification	Contains the unique identifier of the business document.	1..1
		carrier	PartyIdentification	Receiving Advice. Carrier. Party Identification	Carrier charged with delivery of goods.	0..*
		shipper	PartyIdentification	Receiving Advice. Shipper. Party Identification	A party who engages in shipping goods	1..1
		receiver	PartyIdentification	Receiving Advice. Receiver. Party Identification	A party who engages in receiving goods	1..1
		shipFrom	PartyIdentification	Receiving Advice. Ship	Identification of the location	0..1

Business Solution Design

Class (ABIE)	Attribute (BBIE)	Association (ASBIE)	Secondary Class / Data Type	Official Dictionary Entry Name	Definition	Multi-plicity
			tion	From. Party Identification	from where goods will be or have been shipped.	
		shipTo	PartyIdentification	Receiving Advice. Ship To. Party Identification	Identification of the location to where goods will be or have been shipped.	1..1
		<<choice>>	ReceivingAdvice-LogisticUnitLineItem	Receiving Advice. Choice_Association. Receiving Advice Logistic Unit Line Item	No definition required	0..*
		<<choice>>	ReceivingAdviceItemContainmentLineItem	Receiving Advice.	No definition required	0..*
		billOfLading-Number	Reference	Receiving Advice. Bill Of Lading Number. Reference	Contains a reference to the bill of lading that accompanied the received goods.	0..1
		consignmentIdentification	Reference	Receiving Advice. Consignment Identification. Reference	Number that identifies the consignment. (In case consignment consists of one shipment, it coincides with the shipment number). The Consignment Number, AI (401), is allocated by a freight forwarder, (or a carriers acting as a freight forwarder), or a consignor, but only if the prior agreement of the freight forwarder is given. Consignment: A logical grouping of goods (one or more physical entities) that is intended to be transported as a whole from a Shipper (Consignor) to a Receiver (Consignee) by a carrier or freight forwarder.	0..1
			ReceiptInformation	Receiving Advice. Association. Receipt Information	No definition required	1..1
ReceivingAdvice-LogisticUnitLineItem				Receiving Advice Logistic Unit Line Item. Details	No definition required	
		<<is a>>	LogisticUnits	Receiving Advice Logistic	No definition required	1..1

Business Solution Design

Class (ABIE)	Attribute (BBIE)	Association (ASBIE)	Secondary Class / Data Type	Official Dictionary Entry Name	Definition	Multi-licity
				Unit Line Item. Inheritance_ Association. Logistic Units		
		none	ReceivingAdviceItemContainmentLineItem	Receiving Advice Logistic Unit Line Item. Association. Receiving Advice Item Containment Line Item	No definition required	0..*
ReceivingAdviceItemContainmentLineItem				Receiving Advice Item Containment Line Item. Details	Contains detailed information about the received goods.	
		<<is a>>	ItemContainment	Receiving Advice Item Containment Line Item. Inheritance_ Association. Item Containment	No definition required	
	quantityAccepted		Quantity	Receiving Advice Item Containment Line Item. Quantity Accepted. Quantity	Number of units accepted	1..1
	quantityDespatched		Quantity	Receiving Advice Item Containment Line Item. Quantity Despatched. Quantity	Number of units dispatched	0..1
	quantityReceived		Quantity	Receiving Advice Item Containment Line Item. Quantity Received. Quantity	Number of units received	1..1
		despatchAdviceLineReference	DocumentLineReference	Receiving Advice Item Containment Line Item. Dispatch Advice Line Reference. Document Line Reference	Contains the reference to the despatch advice line to which the information in the receiving advice line item refers	0..1
		none	ReceivingConditionInformation	Receiving Advice Item Containment Line Item. Association. Receiving Condition Information	No definition required	0..*
ReceivingConditionInformation				Receiving Condition Information. Details	Contains information about the state of the received goods, such as discrepancies, quality issues, surpluses,	
	receivingCondition			Receiving Condition Information. Receiving Condition. Receiving Condition	Contains a code that specifies the condition of the received goods.	1..1

Business Solution Design

Class (ABIE)	Attribute (BBIE)	Association (ASBIE)	Secondary Class / Data Type	Official Dictionary Entry Name	Definition	Multi- plicity
				Code List_ Code		
	receivingConditionQuantity		Quantity	Receiving Condition Information. Receiving Condition Quantity. Quantity	Specification of discrepancies between quantity accepted, quantity received, quantity dispatched	1..1
ReceiptInformation				Receipt Information. Details	This class provides for the reporting of the shipment details which includes the receiving date, consignor shipment identification and optional purchase order identification. This class is mandatory. This class has two attributes. - Consignor Shipment	
	despatchAdviceDeliveryDateTime			Receipt Information. Despatch Advice Delivery Date Time. Date Time	Contains the planned delivery date time that was communicated in the despatch advice.	0..1
	receivingDateTime			Receipt Information. Receiving Date Time. Date Time	Contains the date and time the goods were actually received.	1..1

1.5.3 Class Diagrams

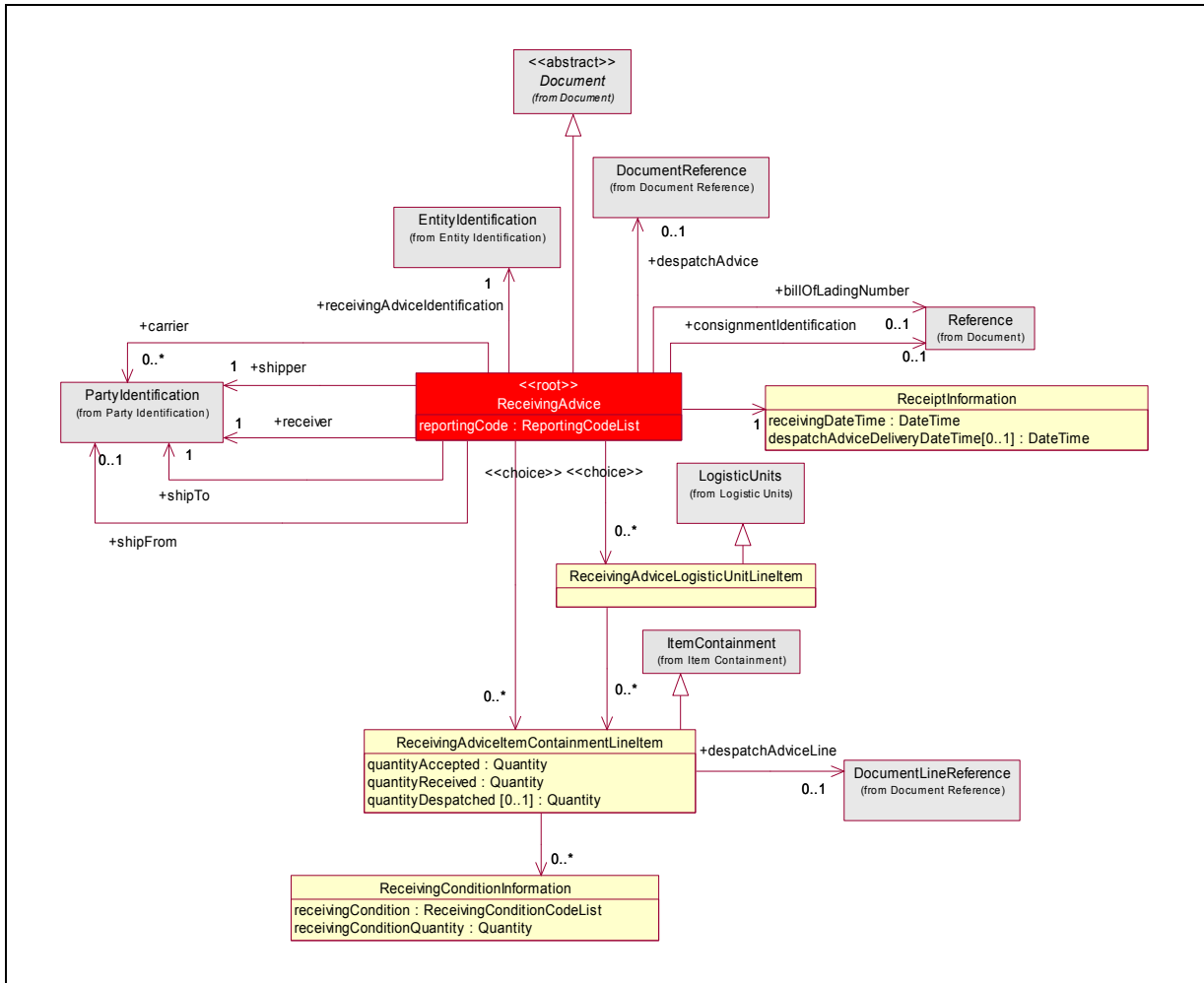


Figure 3 – Class Diagram: Business Document

Business Solution Design

1.5.4 Code Lists

Code List Name	Code List Description
ReportingCodeList	ReceivingAdvice has a ReportingCodeList it uses to select reporting codes. ReportingCodeList contains an enumerated list that allows the ReceivingAdvice class to select the type of content the Receiving Advice will contain.
Code Name	Code Description
CONFIRMATION	N/A
EXCEPTIONS	N/A
FULL_DETAILS	N/A

Code List Name	Code List Description
ReceivingConditionCodeList	ReceivingAdviceTradeItemInformation has a ReceivingConditionCodeList it uses to select receiving condition codes. ReceivingConditionCodeList contains an enumerated list that allows the ReceivingAdviceTradeItemInformation class to select qualitative and/or quantitative descriptive codes to be used in a comparison for ultimate use in the ReceivingAdvice message.
Code Name	Code Description
ACCEPTED_IN_FULL	N/A
DAMAGED_PRODUCT_OR_CONTAINER	N/A
GOOD_CONDITION	N/A
HOLD	N/A
INCORRECT_PRODUCT	N/A
MATERIAL_SCRAPPED	N/A
NON_STANDARD_CONTAINER	N/A
NOT_RECEIVED_SERIAL_NUMBER_REQUIRED	N/A
QUALITY_PROBLEM	N/A
QUANTITY_OVER	N/A
QUANTITY_OVER_RETURN_TO_SUPPLIER	N/A
QUANTITY_RECEIVED_CANNOT_PROCESS_BECAUSE_NO_MATCHING_SERIAL_NUMBER	N/A
QUANTITY_RECEIVED_PROCESSED_WITH_NO_MATCHING_SERIAL_NUMBER	N/A
QUANTITY_SHORT	N/A
REJECTED	N/A

Business Solution Design

1.6 Business Document Example

The following is an example of a receiving advice message. The message is sent out on February 9th at 11 AM. The message is identified with the unique identifier 2005001. The content owner is the sending party, in this case the manufacturer (Receiver 8712345678913).

The receiving advice is sent by the manufacturer (Receiver 8712345678913) to the material supplier (Shipper 8812345678903).

The reported receipt consists of

ReceivingAdvice	
- creationDateTime	2005-02-09T11:00:00
- documentStatus	ORIGINAL
- reportingCode	FULL_DETAILS
EntityIdentification (+receivingAdviceIdentification)	
- uniqueCreatorIdentification	2005001
PartyIdentification (+contentOwner)	
- gLN	8712345678913
PartyIdentification (+shipper)	
- gLN	8812345678903
PartyIdentification (+receiver)	
- gLN	8712345678913
PartyIdentification (+shipTo)	
- gLN	8712345678920
DocumentReference (+despatchAdvice)	
EntityIdentification	
- uniqueCreatorIdentification	2004000012
PartyIdentification (+contentOwner)	
- gLN	8812345678903
ReceivingAdviceLogisticUnitLineItem *1	
- packageType	PE (pallet, modular)
LogisticUnitIdentification	
serialShipmentContainerCode	881234567000010112
ReceivingAdviceItemContainmentLineItem *1.1	
- lineItemNumber	1
- quantityAccepted	50 KGM
- quantityReceived	90.50 KGM
- quantityDespatched	100.50 KGM

Business Solution Design

TradeItemIdentification (+containedItemIdentification)	
- gTIN	08712345678906
DocumentLineReference (+despatchAdviceLine)	
- lineItemNumber	23
ReceivingConditionInformation *1.1.1	
- receivingCondition	DAMAGED_PRODUCT_OR_CONTAINER
- receivingConditionQuantity	40.50 KGM
ReceivingConditionInformation *1.1.2	
- receivingCondition	GOOD_CONDITION
- receivingConditionQuantity	50 KGM
ReceivingConditionInformation *1.1.3	
- receivingCondition	QUANTITY_SHORT
- receivingConditionQuantity	10 KGM

1.7 Implementation Considerations

1.8 Testing

1.8.1 Pass / Fail Criteria

Unit testing criteria for business solution.

Number	Test Criteria	Related Requirement	Design Element	Pass Criteria	Fail Criteria
1	<i>Reflects a specific business requirement from a related BRAD. For example: When goods are ordered, the buyer requires an answer from the suppliers that the order has been received.</i>	<i>BRAD Name.Version. Req #</i>	<i>Message, role, attribute</i>	<i>Result which determines that requirement has been satisfied: For example: Seller is able to create and send an Order Receipt Acknowledgement.</i>	<i>Result which shows that requirement has not been satisfied: For example: Buyer does not receive the Order Receipt Acknowledgement.</i>
2					
3					

1.8.2 Test Data

Business Solution Design

Attribute	Value
<i>Attribute Name. For example "orderQuantity"</i>	<i>Valid value associated with the attribute. For example "5".</i>

1.9 Appendices

1.10 Summary of Changes

(Details changes to BMS for each version by BMS Section)

Change	BMS Ver- sion	Associated CR Number
ReceivingAdvice: - added optional association to PartyIdentification with role name +shipFrom. - changed rolename +despatchAdviceReference into +despatchAdvice ReceivingAdviceItemContainmentLineItem: - changed rolename +despatchAdviceLineReference into +despatchAdviceLine	3.2.3	CR04-000211

2 Technical Solution Design

This section provides the specifications for the standards content ITRG approves. It is called the Technical Solution Design (TSD).

The Technical Solution Design contains:

- TSD Zip file Table of Contents
- Business Message Standard Section Technical Level GDD Report
- XSD (XML Schema Documents)
- XML Instance File and HTML Form View (XML and HTML files containing sample data specified in Section 1.6)

In the process of approving the Technical Solution Design, the ITRG will be provided the following artefacts:

- Any relevant Business Requirements Analysis Document (BRAD)
- Any relevant Business Requirements Document (BRD)
- Section 1 of Business Message Standard (Business Solution Design)
- Comment Resolution Template from Technical Public Review
- XML Test Report
- Change Request
- Other informative or reference documents