



# **Business Message Standard (BMS) Align Item Authorisation**

**BMS Release: 2.3, BRG Name: Align**

***Issue 0.0.5, 14-Oct-2008***

## Document Summary

| Document Item        | Current Value                   |
|----------------------|---------------------------------|
| Document Title       | Business Message Standard (BMS) |
| BMS Name             | Align Item Authorisation        |
| BMS Release          | 2.3                             |
| BRG Name             | Align                           |
| Document Number      | Issue 0.0.5                     |
| Date Last Modified   | 14-Oct-2008                     |
| Status               | Approved                        |
| Owner                | GDSN Task Group                 |
| BMS Template Version | 1.8                             |

## Change Request Reference

| Date of CR Submission to GSMP: | CR Submitter(s): | Refer to Change Request (CR) Number(s): |
|--------------------------------|------------------|---|
|                                |                  |   |

## Business Requirements Document (BRAD) Reference

| BRAD Title:                   | BRD Date:   | BRAD Version |
|-------------------------------|-------------|--------------|
| BRAD Align Item Authorisation | 11-Jan-2005 | 0.0.2        |

## Document Change History

| Date of Change | Version | Changed By | Reason for Change      | Summary of Change  | Model Build # |
|----------------|---------|------------|------------------------|--|---------------|
| 03-Nov-2005    | 0.0.1   | Eric Kauz  | Initial Draft          | Initial Draft  |               |
| 26-Nov-2005    | 0.0.2   | Eric Kauz  | Public Review comments | <ul style="list-style-type: none"> <li>■ Authorise and deauthorise dates made a choice in the Catalogue Item Authorisation document.</li> <li>■ Added the following rule to BSD and BRAD. "ADD and CHANGE_BY_REFRESH are the only Document Commands that are valid for an Item Authorisation/Deauthorisation."</li> <li>■ Added relation to catalogue Item Reference to reflect the item sent on the authorisation.</li> <li>■ Added relation to catalogue Item Authorisation to reflect the item sent on the authorisation.</li> <li>■ Added correct action diagram for UC-1.</li> <li>■ Added definitions for all attributes and relations with named roles.</li> <li>■ Added importer to the parties interested in the document.</li> <li>■ Added a rule that the item authorisation message response is required.</li> </ul> |               |

| Date of Change | Version | Changed By | Reason for Change               | Summary of Change  | Model Build # |
|----------------|---------|------------|---------------------------------|--|---------------|
| 01-Dec-2005    | 0.0.3   | Eric Kauz  | Peer Review                     | <ul style="list-style-type: none"> <li>■ Added role name for association between CatalogueItemAuthorisationResponse and EntityIdentification.</li> <li>■ Changed role name CatalogueItemAuthorisation and EntityIdentification to CatalogueItemAuthorisationResponseIdentification.</li> <li>■ Updated GDD Reports to include references to Document.</li> </ul>                     |               |
| 13-Jan-2006    | 0.0.4   | Eric Kauz  | Comments Based On Review of TSD | <ul style="list-style-type: none"> <li>■ Added flexibility to authorize multiple items at a single location or one item at multiple locations.</li> <li>■ Eliminated reference to entityIdentification on response message for originating Authorisation Message.</li> <li>■ Added rules and alternative scenarios to authorization and authorisation response Use Cases.</li> </ul> |               |
| 14-Oct-2008    | 0.0.5   | Eric Kauz  | Template Update                 |  |               |

## Disclaimer

Whilst every effort has been made to ensure that the guidelines to use the GS1 standards contained in the document are correct, GS1 and any other party involved in the creation of the document HEREBY STATE that the document is provided without warranty, either expressed or implied, of accuracy or fitness for purpose, AND HEREBY DISCLAIM any liability, direct or indirect, for damages or loss relating to the use of the document. The document may be modified, subject to developments in technology, changes to the standards, or new legal requirements. Several products and company names mentioned herein may be trademarks and/or registered trademarks of their respective companies.

# Table of Contents

|   |           |
|---|-----------|
| <b>1. Business Domain View .....</b>  | <b>6</b>  |
| 1.1. Problem Statement / Business Need .....  | 6         |
| 1.2. Objective .....  | 7         |
| 1.3. Audience .....   | 7         |
| 1.4. References .....   | 7         |
| 1.5. Acknowledgements .....   | 7         |
| 1.5.1. ITRG Members .....   | 7         |
| 1.5.2. Task/Project Group Participants ( <i>where applicable</i> ) .....                    | 7         |
| 1.5.3. Design Team Members .....  | 8         |
| <b>2. Business Context .....</b>  | <b>8</b>  |
| <b>3. Additional Technical Requirements Analysis.....</b>                                   | <b>8</b>  |
| <b>4. Business Transaction View .....</b>   | <b>9</b>  |
| 4.1. Business Transaction Use Case Diagram .....  | 9         |
| 4.2. Use Case Description .....   | 9         |
| 4.3. Business Transaction Activity Diagram(s) .....   | 11        |
| 4.4. Business Transaction Sequence Diagram(s) (optional) .....                              | 12        |
| 4.5. Use Case Definition Item De-authorisation.....   | 12        |
| 4.6. Activity Diagram for Item De-authorisation .....                                       | 14        |
| 4.7. Use Case Scenario – Item (De-) Authorisation Response .....                            | 15        |
| 4.8. Use Case Definition Item (De-) Authorisation Response.....                             | 15        |
| 4.9. Activity Diagram Item (De-) Authorisation Response.....                                | 17        |
| <b>5. Information Model (Including GDD Report) .....</b>                                    | <b>18</b> |
| 5.1. Data Description:.....   | 18        |
| 5.1.1. Catalogue Item Authorisation .....   | 18        |
| 5.1.2. Catalogue Item Authorisation Response.....   | 19        |
| 5.2. GDD Report :.....  | 20        |
| 5.2.1. Catalogue Item Authorisation .....   | 20        |
| 5.2.2. Catalogue Item Authorisation Response.....   | 23        |
| 5.3. Class Diagrams .....   | 25        |
| 5.3.1. Catalogue Item Authorisation .....   | 25        |
| 5.3.2. Catalogue Item Authorisation Response.....   | 26        |
| 5.3.3. Party In Role.....   | 27        |
| 5.3.4. Multiple and Single Item Authorisation .....   | 27        |
| 5.3.5. Code Lists.....  | 27        |
| <b>6. Business Document Example .....</b>   | <b>28</b> |
| <b>7. Implementation Considerations.....</b>  | <b>28</b> |
| 7.1. Use of Catalogue Item Authorisation for Store Openings and New Item Introductions..... | 28        |



- 7.2. Use of Catalogue Item Authorisation Response for Store Openings and New Item Introductions . 28
- 7.3. Reference between Catalogue Item Authorisation Response and the Catalogue Item Authorisation 28
- 8. Testing.....29**
  - 8.1. Pass / Fail Criteria..... 29
  - 8.2. Sample Data..... 29
    - 8.2.1. Catalogue Item Authorisation ..... 29
    - 8.2.2. Catalogue Item Authorisation Response..... 30
- 9. Summary of Changes.....32**

# 1. Business Domain View

## 1.1. Problem Statement / Business Need

In order to realise supply chain efficiencies and reduce back office inefficiencies (discrepancies) within the DSD business model, it is necessary to develop a process and transaction(s) that will facilitate the electronic communication of item authorisation (including acceptance and rejection) between trading partners. The current Catalogue Item Notification (CIN) message, as defined in GDSN, facilitates the process of item synchronisation but the acceptance of the notification message (Catalogue Item Confirmation – CIC) is not an acceptance to sell an item within the store. Currently, manual processes link items to stores and distributors and the CIN message does not facilitate this link.

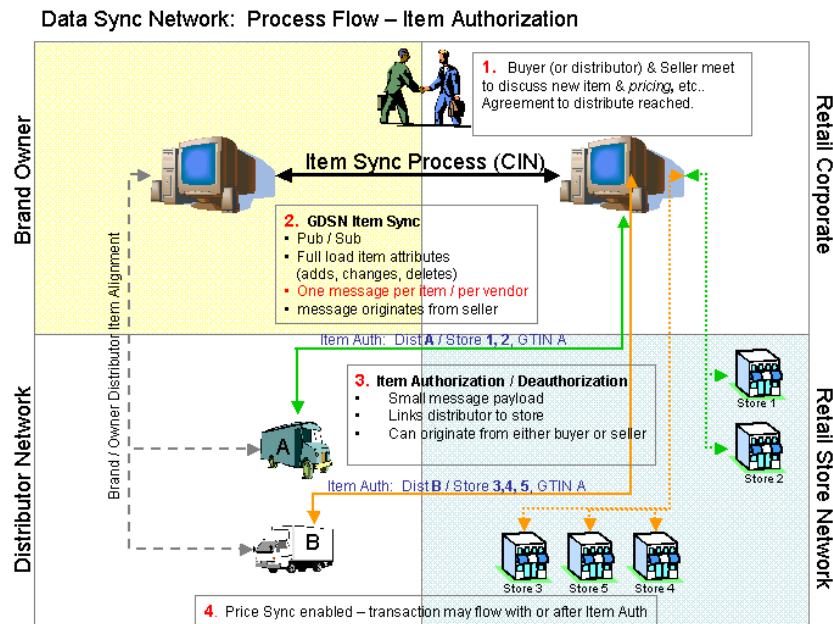
The GCI DSD defines Item Authorisation as:

*The act of granting permission to sell (or deliver) an item at a specific location or groups of locations where the authorisation could be triggered by either trading partner depending on the buying and selling relationship. This process will facilitate the linkage of who can deliver a product to a store and who will be paid for the product.*

This Item Authorisation process can be used either in the GDSN or in a Peer to Peer network. The adoption of this Item Authorisation process is optional. It will identify items the trading partners desire to conduct commerce at any level in a retailer's hierarchy (corporate or store). The "players" that may engage in the Item Authorisation process may be: suppliers and retailers, brand owners, franchise owners and distributors, etc.

An example of how the item authorisation message relates to the item synchronisation message is shown below:

**Figure 1-1** Item Authorisation Message Related to Item Synchronisation Message



## 1.2. Objective

To supply the detail design of the (specific) business transaction needed to meet the re-quirements of the referenced BRAD. This includes the:

- documentation of item authorisation process and choreography
- development of all messages required for item authorisation.

## 1.3. Audience

All manufacturers, retailers, distributors and importers of warehouse or direct store deliv-ery (DSD) distributed items could utilise this Item Authorisation (De-authorisation) Proc-ess standard as it allows trading partners to distinguish the traded items among various distribution and sales channels (warehouse, 2-tier or 3-tier) with retailers. The process and the defined messages can be utilised by the identified parties within and outside the GDSN network.

## 1.4. References

| Reference Name                                      | Description  |
|---|--|
| {Ref1} BRAD Align Item Authorisation Ver-sion 0.0.2 | Requirements Documentation for Item Authorisation. |

## 1.5. Acknowledgements

The following is a list of individuals (and their companies) who participated in the creation, review and approval of this BMS.

### 1.5.1. ITRG Members

Not Applicable

### 1.5.2. Task/Project Group Participants (*where applicable*)

| Function    | Name            | Company / organisation |
|-------------|-----------------|------------------------|
| Participant | Deanne Eskridge | 7-11                   |
| Participant | Talvis Hilley   | Ahold                  |
| Participant | Rich Reinwart   | Anheuser-Busch         |
| Participant | Rob Johnson     | Cadbury Schweppes      |
| Participant | Ann Dozier      | Coca Cola              |
| Participant | Rebecca Quigley | Coca-Cola Bottlers     |
| Participant | Rich Welling    | Dean Foods             |
| Participant | Carolyn Hager   | Food Lion              |
| Participant | Gina Tomassi    | Pepsi Co.              |
| Participant | Susan Moore     | Safeway                |
| Participant | Mark Ingram     | Sara Lee Bakery Group  |
| Participant | Steve Benson    | Target                 |
| Participant | Carolyn Weyrich | Transora               |

| Function    | Name          | Company / organisation |
|-------------|---------------|------------------------|
| Participant | Bruce Hawkins | Wal*Mart               |
| Participant | Mahesh Iyer   | WWRE                   |

### 1.5.3. Design Team Members

| Function                  | Name          | Organisation |
|---------------------------|---------------|--------------|
| Modeller                  | Eric Kauz     | GS1          |
| XML Technical Designer    | Dipan Anarkat | GS1          |
| EANCOM Technical Designer |               |              |
| Peer Reviewer             | John Ryu      | GS1          |

## 2. Business Context

| Context Category     | Value(s)   |
|----------------------|------------|
| Industry             | All        |
| Geopolitical         | All        |
| Product              | All        |
| Process              | Align_GDSN |
| System Capabilities  | EAN.UCC    |
| Official Constraints | None       |

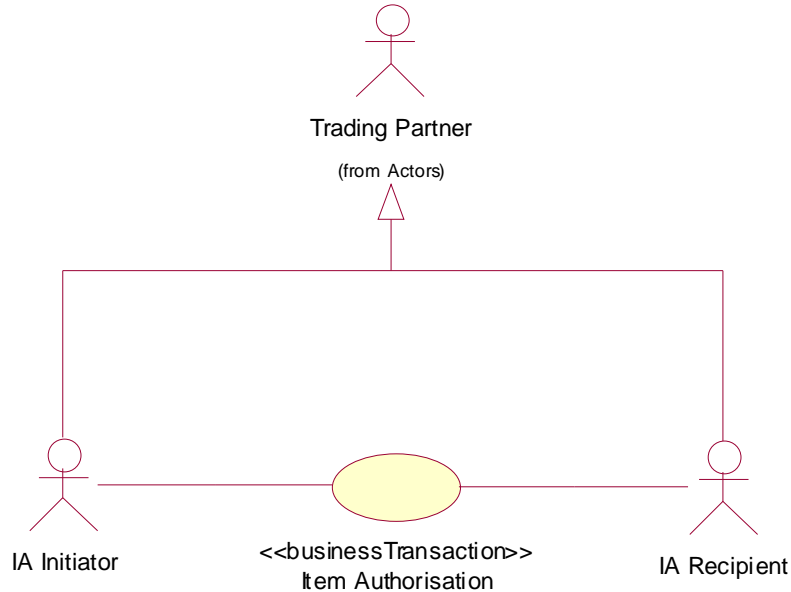
## 3. Additional Technical Requirements Analysis

Not Applicable



## 4. Business Transaction View

### 4.1. Business Transaction Use Case Diagram



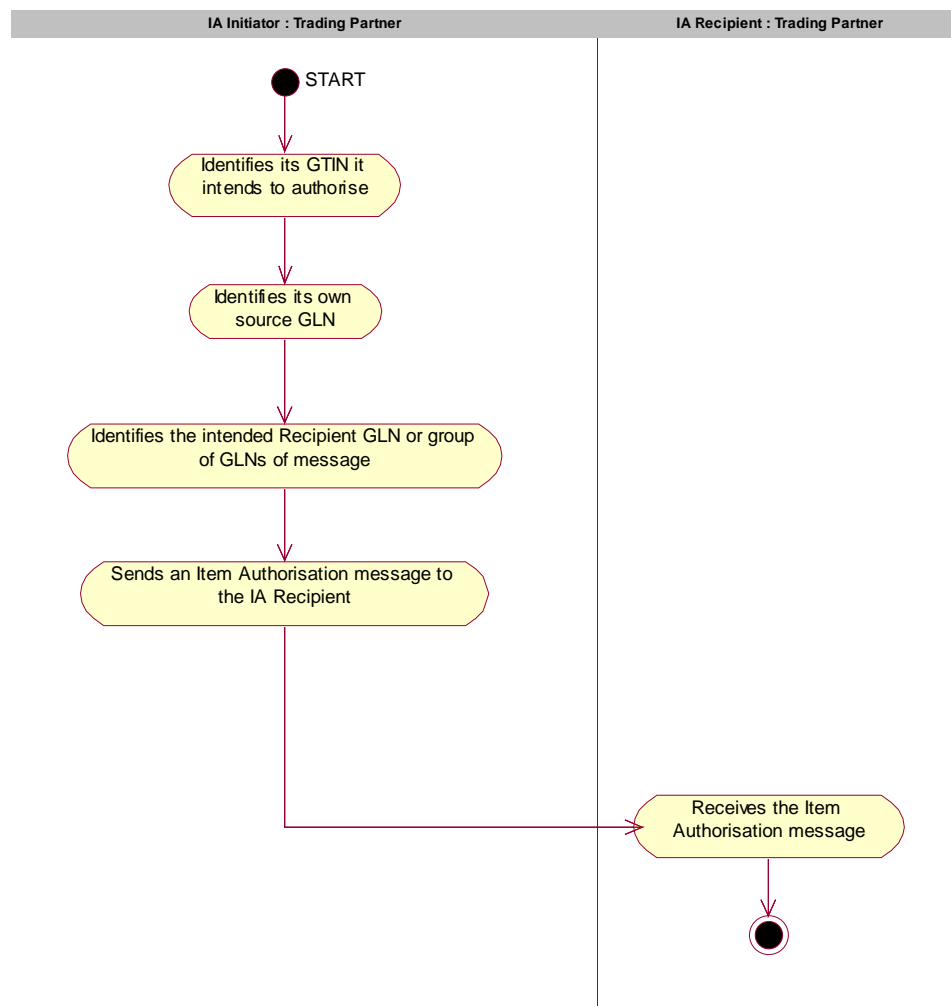
### 4.2. Use Case Description

| Use Case ID          | UC-1   |
|----------------------|--|
| Use Case Name        | Item Authorisation   |
| Use Case Description | <p>The act of granting permission to sell (or deliver) one or many items at a specific location or groups of locations, where the authorisation could be triggered by either trading partner depending on the buying and selling relationship. This process will facilitate the linkage of who can deliver a product to a store and who will be paid for the product.</p> <p>This use case supports the following scenarios:</p> <ul style="list-style-type: none"> <li>■ The distributor of a product is changing in one to many stores or a new store is opening and an authorisation of product must occur.</li> <li>■ Trading partner wants to introduce a new item and phase it in to all locations based on a rollout schedule. Product may or may not be in all locations at same point in time. Product is manufactured by one to many suppliers.</li> <li>■ Item is authorised at a store within a store. Payment for product may originate from different buying departments within retail hierarchy. A GLN may or may not be assigned to the "store within a store".</li> </ul> |
| Actors (Goal)        | IA Initiator (a Trading Partner)<br>IA Recipient (a Trading Partner)   |
| Performance Goals    | To grant permission to sell (or deliver) one or many items at a specific location or groups of locations.  |

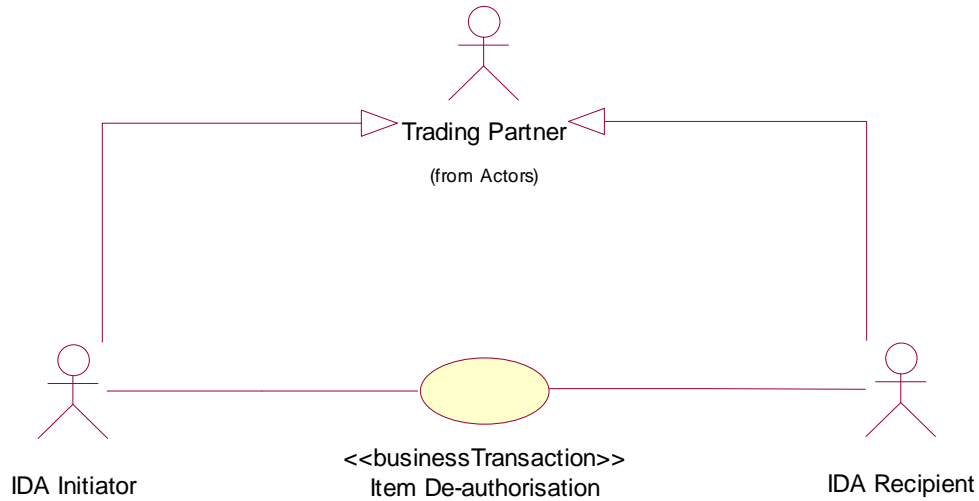
| Use Case ID                 | UC-1   |  |   |               |  |              |  |   |  |  |   |
|-----------------------------|--|--|---|---------------|--|--------------|--|---|--|--|---|
| <b>Preconditions</b>        | <ul style="list-style-type: none"> <li>■ ITEM = NOT AUTHORISED or ITEM = DE-AUTHORISED</li> <li>■ GDSN: Item Data synchronisation and Party Alignment has been performed.</li> <li>■ PEER-TO-PEER: Upfront master data alignment (Trade Item and Party)) has been performed.</li> <li>■ GDSN: Trading partner Catalogue Items and GLNs registered; not necessary for peer-to-peer.</li> </ul>  |  |   |               |  |              |  |   |  |  |   |
| <b>Post conditions</b>      | ITEM = REQUESTED FOR AUTHORISATION   |  |   |               |  |              |  |   |  |  |   |
| <b>Scenario</b>             | <p><u>New Item Introduction</u><br/>                     Begins when... the IA Initiator (a Trading Partner) identifies the trade item it intends to authorise.<br/>                     Continues with...</p> <table border="1" style="width: 100%; border-collapse: collapse;"> <thead> <tr style="background-color: #d3d3d3;"> <th>Step #</th> <th>Actor</th> <th>Activity Step</th> </tr> </thead> <tbody> <tr> <td style="text-align: center;">1</td> <td>IA Initiator</td> <td>IA Initiator identifies its own source GLN and that of the intended recipient GLN or group of GLNs of message.</td> </tr> <tr> <td style="text-align: center;">2</td> <td>IA Initiator</td> <td>IA Initiator sends an Item Authorisation message to the IA Recipients.</td> </tr> </tbody> </table> <p>Ends when... the IA Recipients receive the Item Authorisation message.</p>   | Step #   | Actor   | Activity Step | 1  | IA Initiator | IA Initiator identifies its own source GLN and that of the intended recipient GLN or group of GLNs of message.                   | 2 | IA Initiator   | IA Initiator sends an Item Authorisation message to the IA Recipients. |   |
| Step #                      | Actor  | Activity Step  |   |               |  |              |  |   |  |  |   |
| 1                           | IA Initiator   | IA Initiator identifies its own source GLN and that of the intended recipient GLN or group of GLNs of message. |   |               |  |              |  |   |  |  |   |
| 2                           | IA Initiator   | IA Initiator sends an Item Authorisation message to the IA Recipients.   |   |               |  |              |  |   |  |  |   |
| <b>Alternative Scenario</b> | <p><u>Store Openings</u><br/>                     Begins when... the IA Initiator (a Trading Partner) identifies the trade items it intends to authorise.<br/>                     Continues with...</p> <table border="1" style="width: 100%; border-collapse: collapse;"> <thead> <tr style="background-color: #d3d3d3;"> <th>Step #</th> <th>Actor</th> <th>Activity Step</th> </tr> </thead> <tbody> <tr> <td style="text-align: center;">1</td> <td>IA Initiator</td> <td>IA Initiator identifies its own source GLN and that of the intended recipient GLN of message.</td> </tr> <tr> <td style="text-align: center;">2</td> <td>IA Initiator</td> <td>IA Initiator sends an Item Authorisation message to the IA Recipient.</td> </tr> </tbody> </table> <p>Ends when... the IA Recipient receives the Item Authorisation message.</p>   | Step #   | Actor   | Activity Step | 1  | IA Initiator | IA Initiator identifies its own source GLN and that of the intended recipient GLN of message.                                    | 2 | IA Initiator   | IA Initiator sends an Item Authorisation message to the IA Recipient.  |   |
| Step #                      | Actor  | Activity Step  |   |               |  |              |  |   |  |  |   |
| 1                           | IA Initiator   | IA Initiator identifies its own source GLN and that of the intended recipient GLN of message.                  |   |               |  |              |  |   |  |  |   |
| 2                           | IA Initiator   | IA Initiator sends an Item Authorisation message to the IA Recipient.  |   |               |  |              |  |   |  |  |   |
| <b>Related Requirements</b> | See related data requirements in associated BRAD   |  |   |               |  |              |  |   |  |  |   |
| <b>Related Rules</b>        | <table border="1" style="width: 100%; border-collapse: collapse;"> <tbody> <tr> <td style="text-align: center;">1</td> <td>For peer-to-peer: master data alignment (Item and Party) must occur before the Item Authorisation process can be initiated.</td> </tr> <tr> <td style="text-align: center;">2</td> <td>For GDSN: Item Synchronisation and Party Alignment must occur before the Item Authorisation process can be initiated</td> </tr> <tr> <td style="text-align: center;">3</td> <td>The Item Authorisation can be initiated by any trading partner (buyer, seller or third party) involved in the trade of the item.</td> </tr> <tr> <td style="text-align: center;">4</td> <td>Any non GLN identifiers for party e.g. Store Number, DUNS or internal identifier need to be communicated through the Additional Party Identifier (optional).</td> </tr> <tr> <td style="text-align: center;">5</td> <td>Any non GTIN identifiers for items e.g. UPC, EAN-8 need to be communicated through the Additional Item Identifier (optional).</td> </tr> </tbody> </table> | 1  | For peer-to-peer: master data alignment (Item and Party) must occur before the Item Authorisation process can be initiated. | 2             | For GDSN: Item Synchronisation and Party Alignment must occur before the Item Authorisation process can be initiated | 3            | The Item Authorisation can be initiated by any trading partner (buyer, seller or third party) involved in the trade of the item. | 4 | Any non GLN identifiers for party e.g. Store Number, DUNS or internal identifier need to be communicated through the Additional Party Identifier (optional). | 5  | Any non GTIN identifiers for items e.g. UPC, EAN-8 need to be communicated through the Additional Item Identifier (optional). |
| 1                           | For peer-to-peer: master data alignment (Item and Party) must occur before the Item Authorisation process can be initiated.  |  |   |               |  |              |  |   |  |  |   |
| 2                           | For GDSN: Item Synchronisation and Party Alignment must occur before the Item Authorisation process can be initiated   |  |   |               |  |              |  |   |  |  |   |
| 3                           | The Item Authorisation can be initiated by any trading partner (buyer, seller or third party) involved in the trade of the item.   |  |   |               |  |              |  |   |  |  |   |
| 4                           | Any non GLN identifiers for party e.g. Store Number, DUNS or internal identifier need to be communicated through the Additional Party Identifier (optional).   |  |   |               |  |              |  |   |  |  |   |
| 5                           | Any non GTIN identifiers for items e.g. UPC, EAN-8 need to be communicated through the Additional Item Identifier (optional).  |  |   |               |  |              |  |   |  |  |   |

| Use Case ID | UC-1 |  |
|-------------|------|--|
|             | 6    | There is no cross validation between the IA message and the item sync message. There is no impact on the global registry.      |
|             | 7    | ADD and CHANGE_BY_REFRESH are the only Document Commands that are valid for an Item Authorisation/Deauthorisation.             |
|             | 8    | The Item (De-) Authorisation must to be confirmed with a Catalogue Item Authorisation Response.                                |
|             | 9    | An item authorization message authorises/de-authorises all items in the message and all items bellow it in the item hierarchy. |

### 4.3. Business Transaction Activity Diagram(s)



## 4.4. Business Transaction Sequence Diagram(s) (optional)

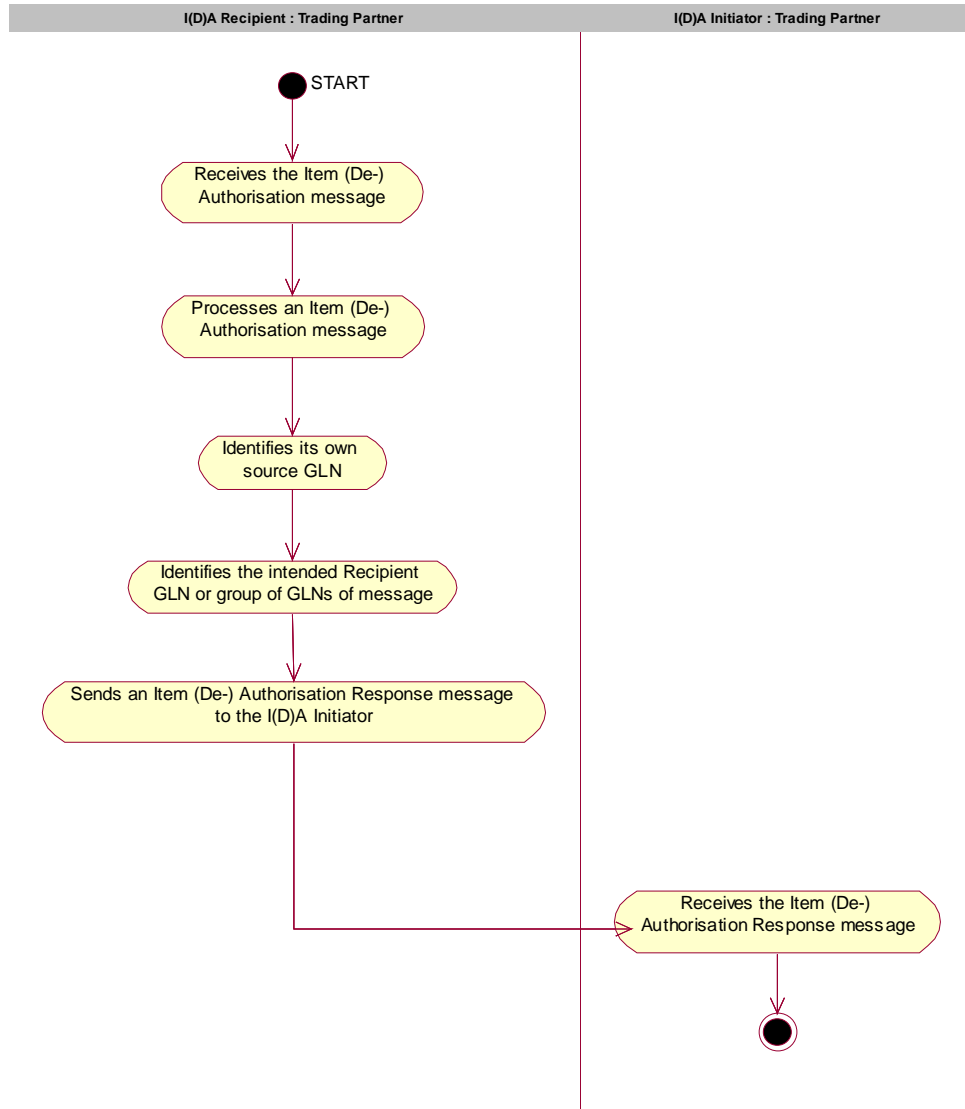


## 4.5. Use Case Definition Item De-authorisation

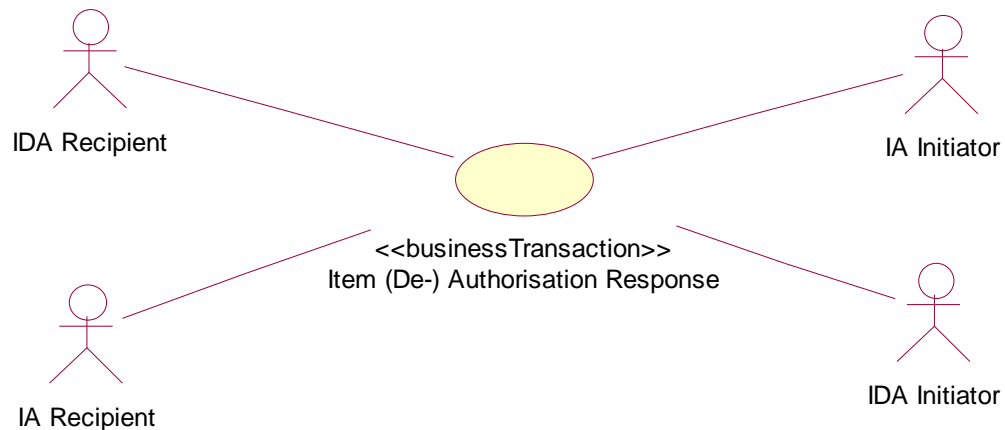
| Use Case ID          | UC-2  |
|----------------------|---|
| Use Case Name        | Item De-authorisation   |
| Use Case Description | The act of removing from a GLN the permission to sell (or deliver) one or many items at a specific location or groups of locations, where the item de-authorisation could be triggered by either trading partner depending on the buying and selling relationship. This process will facilitate the unlinking of who can deliver a product to a store or who will be paid for the product.  |
| Actors (Goal)        | IDA Initiator (a Trading Partner)<br>IDA Recipient (an IA Initiator or IA Recipient)  |
| Performance Goals    | <ul style="list-style-type: none"> <li>■ A manufacturer or distributor has items authorised in some or all stores, but wants to de-authorise the products in some or all stores.</li> <li>■ A retailer de-authorises a private label item a supplier manufactures and distributes to a retailer on a store-by-store basis. This can change based on pricing or service levels on a weekly or monthly basis. Multiple manufacturers may distribute the same Trade Item within a retailer's hierarchy.</li> </ul> |
| Preconditions        | Item Authorisation has occurred, i.e. ITEM = AUTHORISED   |
| Post conditions      | ITEM = REQUESTED FOR DE-AUTHORISATION   |

| Use Case ID                 | UC-2  |  |   |               |  |   |  |   |  |  |   |   |   |   |  |
|-----------------------------|---|--|---|---------------|--|---|--|---|--|--|---|---|---|---|--|
| <b>Scenario</b>             | <p>Deauthorisation of Many Items at One Business Location</p> <p>Begins when... an IDA Initiator or IDA Recipient identifies the trade items it intends to de-authorise.</p> <p>Continues with...</p> <table border="1" style="width: 100%; border-collapse: collapse;"> <thead> <tr> <th style="width: 10%;">Step #</th> <th style="width: 30%;">Actor</th> <th style="width: 60%;">Activity Step</th> </tr> </thead> <tbody> <tr> <td style="text-align: center;">1</td> <td>IDA Initiator or IDA Recipient(IDA Initiator)</td> <td>IDA Initiator or IDA Recipient identifies its own source GLN and that of the intended recipient GLN.</td> </tr> <tr> <td style="text-align: center;">2</td> <td>IDA Initiator or IDA Recipient(IDA Initiator)</td> <td>IDA Initiator or IDA Recipient sends an Item De-authorisation message to the IDA Recipient.</td> </tr> </tbody> </table> <p>Ends when... the IDA Recipient receives the Item De-authorisation message.</p>   | Step #   | Actor   | Activity Step | 1  | IDA Initiator or IDA Recipient(IDA Initiator) | IDA Initiator or IDA Recipient identifies its own source GLN and that of the intended recipient GLN.                             | 2 | IDA Initiator or IDA Recipient(IDA Initiator)  | IDA Initiator or IDA Recipient sends an Item De-authorisation message to the IDA Recipient.  |   |   |   |   |  |
| Step #                      | Actor   | Activity Step  |   |               |  |   |  |   |  |  |   |   |   |   |  |
| 1                           | IDA Initiator or IDA Recipient(IDA Initiator)   | IDA Initiator or IDA Recipient identifies its own source GLN and that of the intended recipient GLN.                             |   |               |  |   |  |   |  |  |   |   |   |   |  |
| 2                           | IDA Initiator or IDA Recipient(IDA Initiator)   | IDA Initiator or IDA Recipient sends an Item De-authorisation message to the IDA Recipient.                                      |   |               |  |   |  |   |  |  |   |   |   |   |  |
| <b>Alternative Scenario</b> | <p>Deauthorisation of One Item at Many Business Locations</p> <p>Begins when... an IDA Initiator or IDA Recipient identifies the trade item it intends to de-authorise.</p> <p>Continues with...</p> <table border="1" style="width: 100%; border-collapse: collapse;"> <thead> <tr> <th style="width: 10%;">Step #</th> <th style="width: 30%;">Actor</th> <th style="width: 60%;">Activity Step</th> </tr> </thead> <tbody> <tr> <td style="text-align: center;">1</td> <td>IDA Initiator or IA Recipient(IDA Initiator)</td> <td>IDA Initiator or IDA Recipient identifies its own source GLN and that of the intended recipient GLN or group of GLNs of message.</td> </tr> <tr> <td style="text-align: center;">2</td> <td>IDA Initiator or IA Recipient(IDA Initiator)</td> <td>IDA Initiator or IDA Recipient sends an Item De-authorisation message to the IDA Recipients.</td> </tr> </tbody> </table> <p>Ends when... the IDA Recipients receive the Item De-authorisation message.</p>   | Step #   | Actor   | Activity Step | 1  | IDA Initiator or IA Recipient(IDA Initiator)  | IDA Initiator or IDA Recipient identifies its own source GLN and that of the intended recipient GLN or group of GLNs of message. | 2 | IDA Initiator or IA Recipient(IDA Initiator)   | IDA Initiator or IDA Recipient sends an Item De-authorisation message to the IDA Recipients. |   |   |   |   |  |
| Step #                      | Actor   | Activity Step  |   |               |  |   |  |   |  |  |   |   |   |   |  |
| 1                           | IDA Initiator or IA Recipient(IDA Initiator)  | IDA Initiator or IDA Recipient identifies its own source GLN and that of the intended recipient GLN or group of GLNs of message. |   |               |  |   |  |   |  |  |   |   |   |   |  |
| 2                           | IDA Initiator or IA Recipient(IDA Initiator)  | IDA Initiator or IDA Recipient sends an Item De-authorisation message to the IDA Recipients.                                     |   |               |  |   |  |   |  |  |   |   |   |   |  |
| <b>Related Requirements</b> | See related data requirements in associated BRAD  |  |   |               |  |   |  |   |  |  |   |   |   |   |  |
| Related Rules               | <table border="1" style="width: 100%; border-collapse: collapse;"> <tbody> <tr> <td style="width: 5%; text-align: center;">1</td> <td>De-authorisations are limited to the initiator or recipient of the Item Authorisation</td> </tr> <tr> <td style="text-align: center;">2</td> <td>Any non GLN identifiers for party e.g. Store Number, DUNS or internal identifier need to be communicated through the Additional Party Identifier (optional).</td> </tr> <tr> <td style="text-align: center;">3</td> <td>Any non GTIN identifiers for items e.g. UPC, EAN-8 need to be communicated through the Additional Item Identifier (optional).</td> </tr> <tr> <td style="text-align: center;">4</td> <td>ADD and CHANGE_BY_REFRESH are the only Document Commands that are valid for an Item Authorisation/Deauthorisation.</td> </tr> <tr> <td style="text-align: center;">5</td> <td>The Item (De-) Authorisation must to be confirmed with a Catalogue Item Authorisation Response.</td> </tr> <tr> <td style="text-align: center;">6</td> <td>There is no cross validation between the IA message and the item sync message. There is no impact on the global registry.</td> </tr> <tr> <td style="text-align: center;">7</td> <td>An item authorization message authorises/de-authorises all items in the message and all items bellow it in the item hierarchy.</td> </tr> </tbody> </table> | 1  | De-authorisations are limited to the initiator or recipient of the Item Authorisation | 2             | Any non GLN identifiers for party e.g. Store Number, DUNS or internal identifier need to be communicated through the Additional Party Identifier (optional). | 3   | Any non GTIN identifiers for items e.g. UPC, EAN-8 need to be communicated through the Additional Item Identifier (optional).    | 4 | ADD and CHANGE_BY_REFRESH are the only Document Commands that are valid for an Item Authorisation/Deauthorisation. | 5  | The Item (De-) Authorisation must to be confirmed with a Catalogue Item Authorisation Response. | 6 | There is no cross validation between the IA message and the item sync message. There is no impact on the global registry. | 7 | An item authorization message authorises/de-authorises all items in the message and all items bellow it in the item hierarchy. |
| 1                           | De-authorisations are limited to the initiator or recipient of the Item Authorisation   |  |   |               |  |   |  |   |  |  |   |   |   |   |  |
| 2                           | Any non GLN identifiers for party e.g. Store Number, DUNS or internal identifier need to be communicated through the Additional Party Identifier (optional).  |  |   |               |  |   |  |   |  |  |   |   |   |   |  |
| 3                           | Any non GTIN identifiers for items e.g. UPC, EAN-8 need to be communicated through the Additional Item Identifier (optional).   |  |   |               |  |   |  |   |  |  |   |   |   |   |  |
| 4                           | ADD and CHANGE_BY_REFRESH are the only Document Commands that are valid for an Item Authorisation/Deauthorisation.  |  |   |               |  |   |  |   |  |  |   |   |   |   |  |
| 5                           | The Item (De-) Authorisation must to be confirmed with a Catalogue Item Authorisation Response.   |  |   |               |  |   |  |   |  |  |   |   |   |   |  |
| 6                           | There is no cross validation between the IA message and the item sync message. There is no impact on the global registry.   |  |   |               |  |   |  |   |  |  |   |   |   |   |  |
| 7                           | An item authorization message authorises/de-authorises all items in the message and all items bellow it in the item hierarchy.  |  |   |               |  |   |  |   |  |  |   |   |   |   |  |

## 4.6. Activity Diagram for Item De-authorisation



## 4.7. Use Case Scenario – Item (De-) Authorisation Response



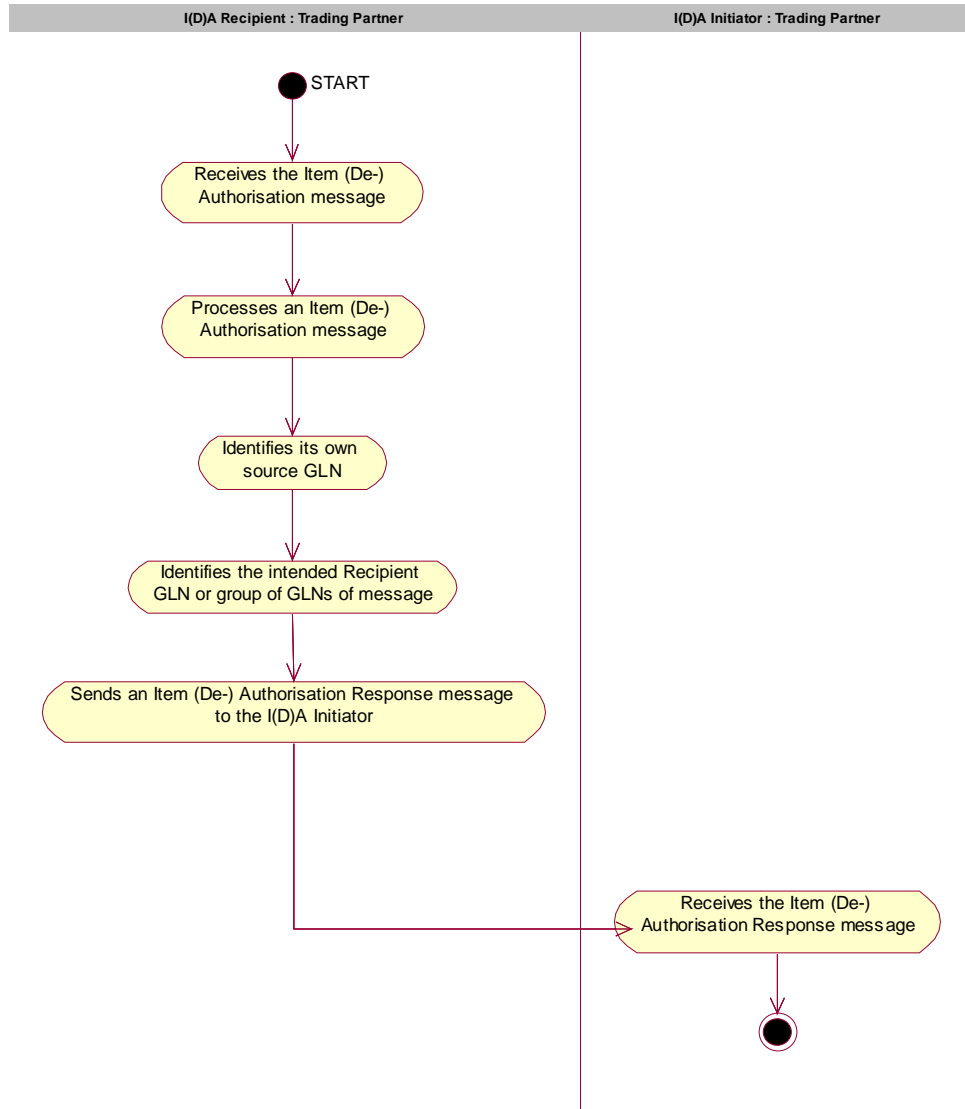
## 4.8. Use Case Definition Item (De-) Authorisation Response

| Use Case ID                 | UC-3   |
|-----------------------------|--|
| <b>Use Case Name</b>        | Item (De-) Authorisation Response  |
| <b>Use Case Description</b> | The act of accepting or rejecting either an item authorisation or de-authorisation by the message recipient.   |
| <b>Actors (Goal)</b>        | <ul style="list-style-type: none"> <li>■ IA Recipient (i.e. a Trading Partner)</li> <li>■ IDA Recipient (i.e. an IA Initiator or an IA Recipient)</li> <li>■ IA Initiator (i.e. a Trading Partner)</li> <li>■ IDA Initiator (i.e. an IA Initiator or an IA Recipient)</li> </ul>   |
| <b>Performance Goals</b>    | To accept or reject Item Authorisation or De-Authorisation.  |
| <b>Preconditions</b>        | <ul style="list-style-type: none"> <li>■ Item Authorisation or Item De-authorisation message has been received, (i.e. ITEM = REQUESTED FOR AUTHORISATION or ITEM = REQUESTED FOR DE-AUTHORISATION).</li> <li>■ GDSN: Item Data synchronisation and Party Alignment is required.</li> <li>■ PEER-TO-PEER: Upfront master data alignment (Trade Item and Party)) is required.</li> <li>■ GDSN: Trading partner Catalogue Items and GLNs registered; not necessary for peer-to-peer.</li> </ul> |
| <b>Post conditions</b>      | For Authorisation: ITEM = AUTHORISED<br>For De-Authorisation: ITEM = DE-AUTHORISED   |

| Use Case ID                 | UC-3   |  |   |
|-----------------------------|--|--|---|
| <b>Scenario</b>             | Begins when... the IA Recipient or IDA Recipient processes an Item (De-) Authorisation message within their internal systems.<br>Continues with... |  |   |
|                             | Step #   | Actor  | Activity Step   |
|                             | 1  | I(D)A Recipient  | I(D)A Recipient identifies its own source GLN and that of the intended recipient GLN or group of GLNs of message.       |
|                             | 2  | I(D)A Recipient  | I(D)A Recipient accepts or rejects the item authorisation/deauthorisation on the buyer-seller-(distributor)-item level. |
|                             | 3  | I(D)A Recipient  | I(D)A Recipient sends an Item (De-) Authorisation Response message to the I(D)A Initiator.                              |
|                             | Ends when...the I(D)A Initiator receives the Item (De-) Authorisation Response message.  |  |   |
| <b>Alternative Scenario</b> | Step #   | Actor  | Activity Step   |
|                             |  |  |   |
|                             |  |  |   |
| <b>Related Requirements</b> |  |  |   |
| <b>Related Rules</b>        | 1  | If the Distributor is not present on the Item Authorisation Message, it becomes mandatory on the IA Response.  |   |
|                             | 2  | Only the statuses of Accepted and Rejected can be sent in the Catalogue Item Authorisation Response.   |   |
|                             | 3  | The Item (De-) Authorisation must to be confirmed with a Catalogue Item Authorisation Response.  |   |
|                             | 4  | Any non GLN identifiers for party e.g. Store Number, DUNS or internal identifier need to be communicated through the Additional Party Identifier (optional). |   |
|                             | 5  | Any non GTIN identifiers for items e.g. UPC, EAN-8 need to be communicated through the Additional Item Identifier (optional).                                |   |
|                             | 6  | A recipient must respond to every Item on an Item Authorisation or Item De-Authorisation..   |   |
|                             | 7  | The absence of a response does not mean that the authorization/de-authorisation has been accepted by the recipient.  |   |
|                             | 8  | Response messages must be in the same format as the originating authorisation or deauthorisation.  |   |



## 4.9. Activity Diagram Item (De-) Authorisation Response



## 5. Information Model (Including GDD Report)

### 5.1. Data Description:

#### 5.1.1. Catalogue Item Authorisation

| CLASS (ABIE)                    | ATTRIBUTE (BBIE)               | ASSOCIATION (ASBIE)                      | SECONDARY CLASS                 | RELATED REQUIREMENT |
|---------------------------------|--------------------------------|--|---------------------------------|---------------------|
| AuthorisationTarget             |                                |  |                                 |                     |
|                                 |                                |  | MultipleItemAuthorisation       | {Ref1}              |
|                                 |                                |  | Single Item Authorisation       | {Ref1}              |
| CatalogueItemAuthorisation      |                                |  |                                 |                     |
|                                 |                                | None                                     | Document                        | {Ref1}              |
|                                 | itemAuthorisationStatus Reason |  |                                 | {Ref1}              |
|                                 | itemAuthorisationStatus        |  |                                 | {Ref1} 10           |
|                                 |                                | catalogueItemAuthorisationIdentification | EntityIdentification            | {Ref1} 15,17        |
|                                 |                                |  | AuthorisationTarget             |                     |
|                                 |                                |  | ItemAuthorisationStatusDateTime | {Ref1} 11, 12       |
|                                 |                                | brandOwner                               | PartyIdentification             | {Ref1} 14           |
|                                 |                                | distributor                              | PartyIdentification             | {Ref1} 9            |
|                                 |                                | manufacturer                             | PartyIdentification             | {Ref1} 18           |
|                                 |                                | orderFrom                                | PartyIdentification             | {Ref1} 19           |
|                                 |                                | receiver                                 | PartyInRole                     | {Ref1} 20           |
|                                 |                                | sender                                   | PartyInRole                     | {Ref1}              |
| ItemAuthorisationStatusDateTime |                                |  |                                 |                     |

| CLASS (ABIE)              | ATTRIBUTE (BBIE)        | ASSOCIATION (ASBIE) | SECONDARY CLASS        | RELATED REQUIREMENT |
|---------------------------|-------------------------|---------------------|------------------------|---------------------|
|                           | authorisationDateTime   |                     | <<Choice>>             | {Ref1} 11           |
|                           | deauthorisationDateTime |                     | <<Choice>>             | {Ref1} 12           |
| MultipleItemAuthorisation |                         |                     |                        |                     |
|                           |                         | businessLocation    | PartyInRole            | {Ref1} 20           |
|                           |                         |                     | CatalogueItemReference | {Ref1} 12           |
| PartyInRole               |                         |                     |                        |                     |
|                           | partyRole               |                     |                        | {Ref1}              |
|                           |                         |                     | PartyIdentification    | {Ref1}              |
| SingleItemAuthorisation   |                         |                     |                        |                     |
|                           |                         | businessLocation    | PartyInRole            | {Ref1} 20           |
|                           |                         |                     | CatalogueItemReference | {Ref1} 12           |

### 5.1.2. Catalogue Item Authorisation Response

| CLASS (ABIE)                       | ATTRIBUTE (BBIE) | ASSOCIATION (ASBIE)                              | SECONDARY CLASS           | RELATED REQUIREMENT |
|------------------------------------|------------------|--|---------------------------|---------------------|
| CatalogueItemAuthorisationResponse |                  |  |                           |                     |
|                                    |                  | None   | Document                  | {Ref1}              |
|                                    |                  | catalogueItemAuthorisationResponseIdentification | EntityIdentification      | {Ref1} 2            |
|                                    |                  |  | AuthorisationResponse     | {Ref1} 4,5          |
|                                    |                  | distributor                                      | PartyIdentification       | {Ref1} 9            |
|                                    |                  | receiver   | PartyInRole               | {Ref1}              |
|                                    |                  | sender   | PartyInRole               | {Ref1}              |
| AuthorisationResponse              |                  |  |                           |                     |
|                                    | responseStatus   |  |                           | {Ref1} 5            |
|                                    |                  |  | SingleItemAuthorisation   | {Ref1} 5            |
|                                    |                  |  | MultipleItemAuthorisation | {Ref1} 5            |

| CLASS (ABIE)              | ATTRIBUTE (BBIE) | ASSOCIATION (ASBIE) | SECONDARY CLASS        | RELATED REQUIREMENT |
|---------------------------|------------------|---------------------|------------------------|---------------------|
| MultipleItemAuthorisation |                  |                     |                        |                     |
|                           |                  | businessLocation    | PartyInRole            | {Ref1} 20           |
|                           |                  |                     | CatalogueItemReference | {Ref1} 12           |
| PartyInRole               |                  |                     |                        |                     |
|                           | partyRole        |                     |                        | {Ref1}              |
|                           |                  |                     | PartyIdentification    | {Ref1}              |
| SingleItemAuthorisation   |                  |                     |                        |                     |
|                           |                  | businessLocation    | PartyInRole            | {Ref1} 20           |
|                           |                  |                     | CatalogueItemReference | {Ref1} 12           |

## 5.2. GDD Report :

### 5.2.1. Catalogue Item Authorisation

| CLASS (ABIE)               | ATTRIBUTE (BBIE) | ASSOCIATION (ASBIE) | SECONDARY CLASS           | Official Dictionary Entry Name  | Definition  | Multiplicity |
|----------------------------|------------------|---------------------|---------------------------|---|---|--------------|
| AuthorisationTarget        |                  |                     |                           | Authorisation Target.Details  | The trade items being authorised or deauthorised at one or many business locations.             |              |
|                            |                  |                     | MultipleItemAuthorisation | Authorisation Target. Choice_Association. Multiple Item Authorisation | Not Available.  | 1..1         |
|                            |                  |                     | Single Item Authorisation | Authorisation Target. Choice_Association. Single Item Authorisation   | Not Available.  | 1..1         |
| CatalogueItemAuthorisation |                  |                     |                           | Catalogue Item Authorisation.Detail                                   | A document used to authorise or deauthorise an item for sale to one or many business locations. |              |

| CLASS (ABIE) | ATTRIBUTE (BBIE)              | ASSOCIATION (ASBIE)                      | SECONDARY CLASS                 | Official Dictionary Entry Name   | Definition   | Multiplicity |
|--------------|-------------------------------|--|---------------------------------|--|--|--------------|
|              |                               | None                                     | Document                        | Catalogue Item Authorisation. Inheritance_ Association. Electronic_ Document | Not Available  | 1..1         |
|              | itemAuthorisationStatusReason |  |                                 | Catalogue Item Authorisation. Item Authorisation Status Reason.Text          | Additional details associated with the item authorisation status.  | 0..1         |
|              | itemAuthorisationStatus       |  |                                 | Catalogue Item Authorisation. Item Authorisation Status.Code                 | Code identifying the authorisation status within a specific location. Item Authorisation Statuses are Authorise and Deauthorise.   | 1..1         |
|              |                               | catalogueItemAuthorisationIdentification | EntityIdentification            | Catalogue Item Authorisation.Association. Entity Identification              | Unique message identifier for the Catalogue Item Authorisation message.  | 1..1         |
|              |                               |  | AuthorisationTarget             | Catalogue Item Authorisation.Association. Authorisation Target               | Not available.   | 1..1         |
|              |                               |  | ItemAuthorisationStatusDateTime | Catalogue Item Authorisation.Association. Item Authorisation Date Time       | Not available.   | 1..1         |
|              |                               | brandOwner                               | PartyIdentification             | Catalogue Item Authorisation. Brand Owner. Party Identification              | Unique location number identifying the brand owner. May or may not be the same entity as the information provider, which actually enters and maintains data in data pools. | 0..1         |
|              |                               | distributor                              | PartyIdentification             | Catalogue Item Authorisation. Distributor. Party Identification              | An entity which purchases and takes title to goods which are then resold / redistributed elsewhere.  | 0..1         |
|              |                               | manufacturer                             | PartyIdentification             | Catalogue Item Authorisation. Manufacturer. Party Identification             | The party who manufactures the item.   | 0..1         |
|              |                               | orderFrom                                | PartyIdentification             | Catalogue Item Authorisation. Order From. Party Identification               | The location that the item can be ordered from.  | 0..1         |
|              |                               | receiver                                 | PartyInRole                     | Catalogue Item Authorisation. Receiver. Party In Role                        | Party who receives the item authorisation message.   | 1..1         |

| CLASS (ABIE)                    | ATTRIBUTE (BBIE)        | ASSOCIATION (ASBIE) | SECONDARY CLASS        | Official Dictionary Entry Name   | Definition   | Multiplcity |
|---------------------------------|-------------------------|---------------------|------------------------|--|--|-------------|
|                                 |                         | sender              | PartyInRole            | Catalogue Item Authorisation.Sender. Party In Role                       | Party who sends the item authorisation message.  | 1..1        |
| ItemAuthorisationStatusDateTime |                         |                     |                        | Item Authorisation Status Date Time                                      | Not Available  |             |
|                                 | authorisationDateTime   |                     | <<Choice>>             | Item Authorisation Status Date Time. Authorisation Date Time.Date Time   | First day on which the item will be authorised for sale to a location.   | 1..1        |
|                                 | deauthorisationDateTime |                     | <<Choice>>             | Item Authorisation Status Date Time. Deauthorisation Date Time.Date Time | Last date on which the item will be authorised for sale to a location.   | 1..1        |
| MultipleItemAuthorisation       |                         |                     |                        | Multiple Item Authorisation.Detail                                       | The authorisation of a multiple items at single business location.   |             |
|                                 |                         | businessLocation    | PartyInRole            | Multiple Item Authorisation. Business Location.Party In Role             | Unique location number identifying the business to which the item will be authorised for sale. Examples of Business Locations include stores and distribution centers. | 1..1        |
|                                 |                         |                     | CatalogueItemReference | Multiple Item Authorisation. Business Location.Party In Role             | Not Available  | 1..*        |
| PartyInRole                     |                         |                     |                        | Party In Role. Detail  | The identification of a party in a specific party role.  |             |
|                                 | partyRole               |                     |                        | Party In Role.Party Role.Code  | Not Available  | 0..1        |
|                                 |                         |                     | PartyIdentification    | Party In Role.Association.Party Identification                           | Not Available  | 1..1        |
| SingleItemAuthorisation         |                         |                     |                        | Single Item Authorisation.Detail   | The authorisation of a single item at multiple business locations.   |             |
|                                 |                         | businessLocation    | PartyInRole            | Single Item Authorisation. Business Location.Party In Role               | Unique location number identifying the business to which the item will be authorised for sale. Examples of Business Locations include stores and distribution centers. | 1..*        |

| CLASS (ABIE) | ATTRIBUTE (BBIE) | ASSOCIATION (ASBIE) | SECONDARY CLASS        | Official Dictionary Entry Name                             | Definition    | Multiplcity |
|--------------|------------------|---------------------|------------------------|--|---------------|-------------|
|              |                  |                     | CatalogueItemReference | Single Item Authorisation. Business Location.Party In Role | Not Available | 1..1        |

### 5.2.2. Catalogue Item Authorisation Response

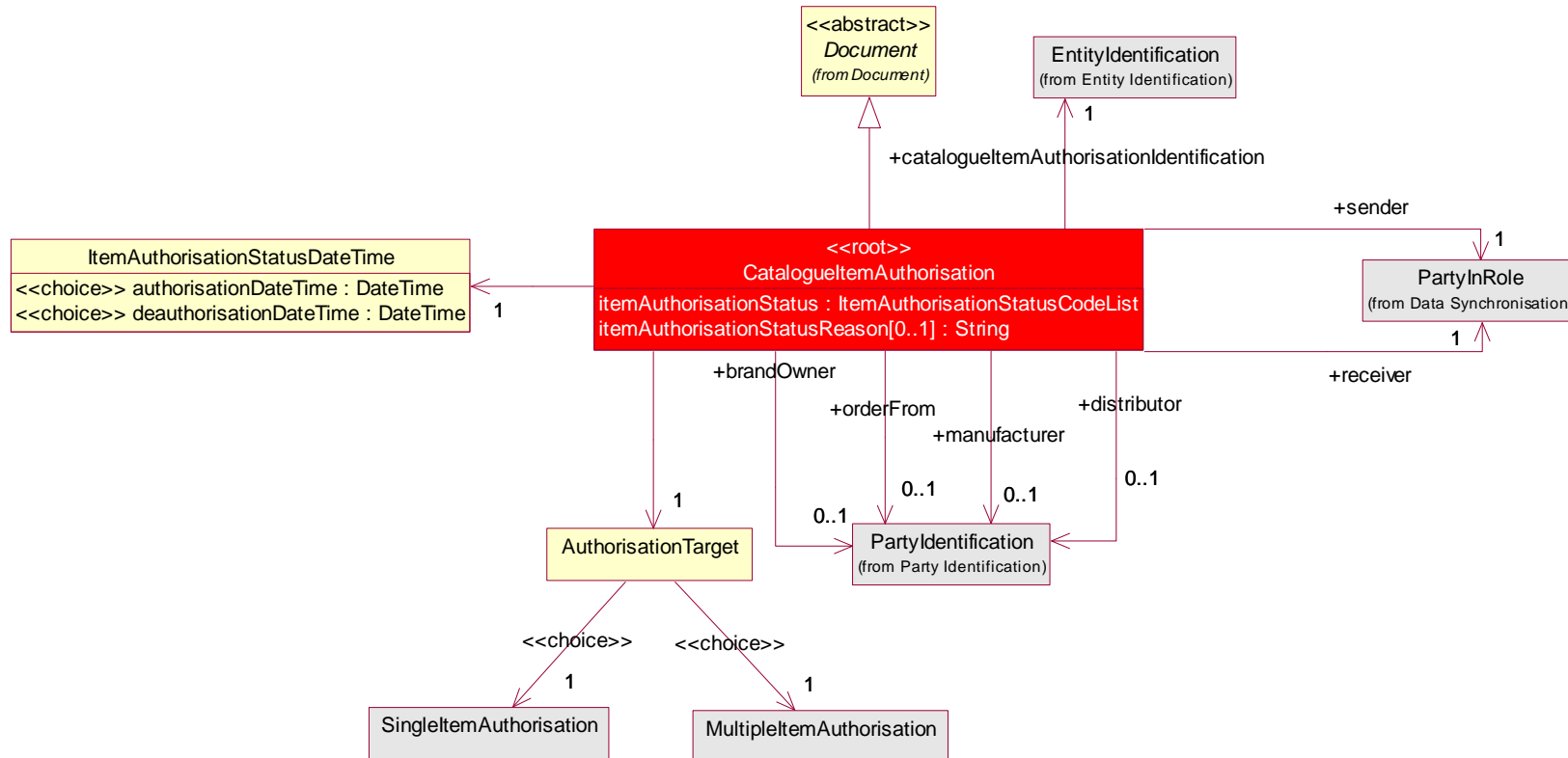
| CLASS (ABIE)                       | ATTRIBUTE (BBIE) | ASSOCIATION (ASBIE)                              | SECONDARY CLASS       | Official Dictionary Entry Name   | Definition  | Multiplcity |
|------------------------------------|------------------|--|-----------------------|--|---|-------------|
| CatalogueItemAuthorisationResponse |                  |  |                       | Catalogue Item Authorisation Response.Details  | Response Document used to Accept or Reject a Catalogue Item Authorisation.                          |             |
|                                    |                  | None   | Document              | Catalogue Item Authorisation Response. Inheritance_Association. Electronic_Document                              | Not Available   | 1..1        |
|                                    |                  | catalogueItemAuthorisationResponseIdentification | EntityIdentification  | Catalogue Item Authorisation Response.Catalogue Item Authorisation Response Identification.Entity Identification | Not Available   | 1..1        |
|                                    |                  |  | AuthorisationResponse | Catalogue Item Authorisation Response. Association.Authorisation Response  | An acceptance or rejection of a Catalogue Item Authorisation at the business location level.        | 1..*        |
|                                    |                  | distributor                                      | PartyIdentification   | Catalogue Item Authorisation Response. Distributor. Party Identification   | An entity which purchases and takes title to goods which are then resold / redistributed elsewhere. | 0..1        |
|                                    |                  | receiver   | PartyInRole           | Catalogue Item Authorisation Response. Receiver. Party In Role   | Party who sends the item authorisation message.   | 1..1        |
|                                    |                  | sender   | PartyInRole           | Catalogue Item Authorisation Response. Sender. Party In Role   | Party who sends the item authorisation message.   | 1..1        |
| AuthorisationResponse              |                  |  |                       | Authorisation Response.Detail  | Not Available   |             |

| CLASS (ABIE)              | ATTRIBUTE (BBIE) | ASSOCIATION (ASBIE) | SECONDARY CLASS           | Official Dictionary Entry Name   | Definition   | Multiplicity |
|---------------------------|------------------|---------------------|---------------------------|--|--|--------------|
|                           | responseStatus   |                     |                           | Authorisation Response.Response Status.Code                            | The 3 states are: Accepted, Modified, Rejected.  | 1..1         |
|                           |                  |                     | SingleItemAuthorisation   | Authorisation Response.Choice_Association. Single Item Authorisation   | Not Available  | 1..1         |
|                           |                  |                     | MultipleItemAuthorisation | Authorisation Response.Choice_Association. Multiple Item Authorisation | Not available.   | 1..1         |
| MultipleItemAuthorisation |                  |                     |                           | Multiple Item Authorisation.Detail                                     | The authorisation of a multiple items at single business location.   |              |
|                           |                  | businessLocation    | PartyInRole               | Multiple Item Authorisation. Business Location.Party In Role           | Unique location number identifying the business to which the item will be authorised for sale. Examples of Business Locations include stores and distribution centers. | 1..1         |
|                           |                  |                     | CatalogueItemReference    | Multiple Item Authorisation. Business Location.Party In Role           | Not Available  | 1..*         |
| PartyInRole               |                  |                     |                           | Party In Role. Detail  | The identification of a party in a specific party role.  |              |
|                           | partyRole        |                     |                           | Party In Role.Party Role.Code  | Not Available  | 0..1         |
|                           |                  |                     | PartyIdentification       | Party In Role.Association.Party Identification                         | Not Available  | 1..1         |
| SingleItemAuthorisation   |                  |                     |                           | Single Item Authorisation.Detail                                       | The authorisation of a single item at multiple business locations.   |              |
|                           |                  | businessLocation    | PartyInRole               | Single Item Authorisation. Business Location.Party In Role             | Unique location number identifying the business to which the item will be authorised for sale. Examples of Business Locations include stores and distribution centers. | 1..*         |
|                           |                  |                     | CatalogueItemReference    | Single Item Authorisation. Business Location.Party In Role             | Not Available  | 1..1         |

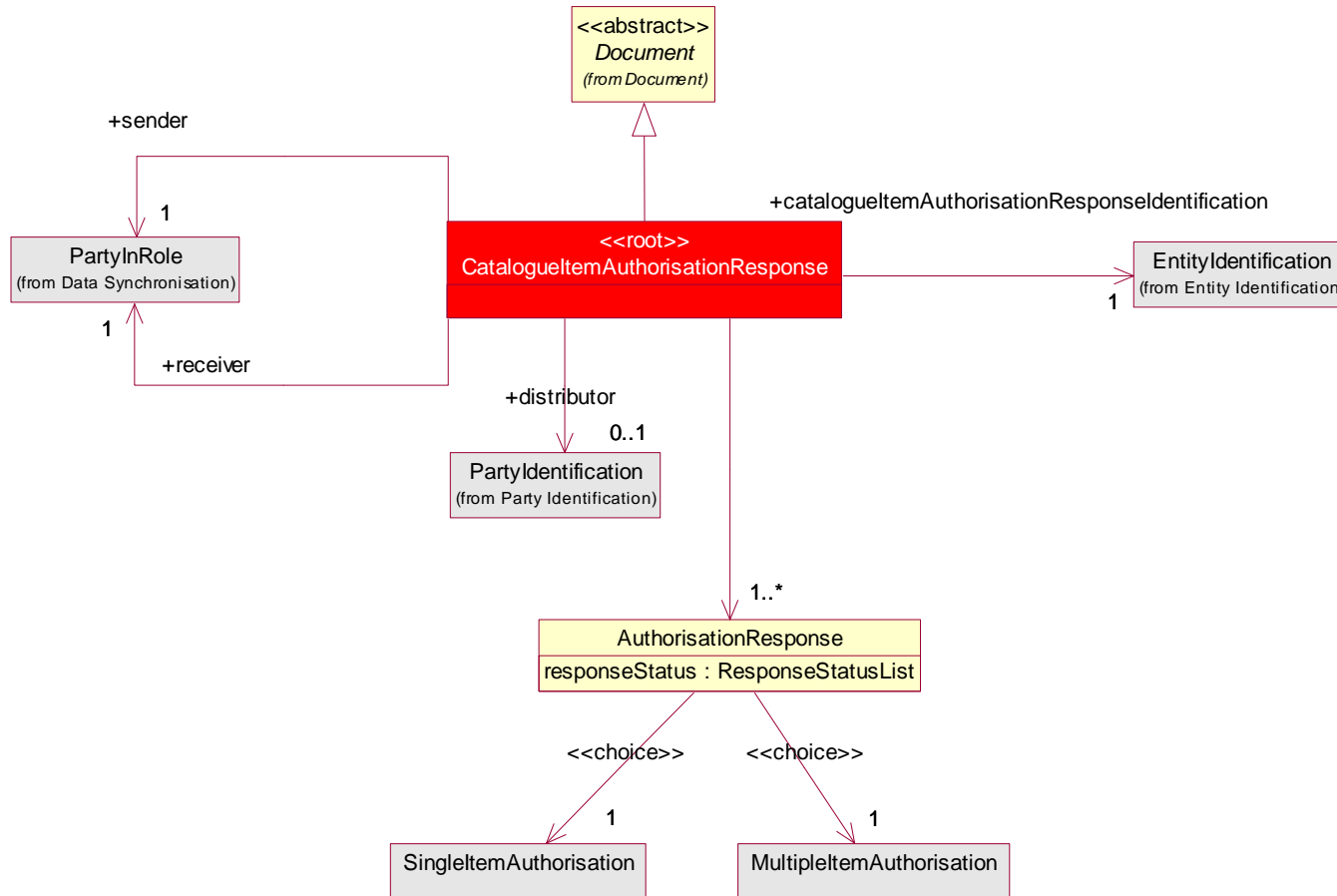


## 5.3. Class Diagrams

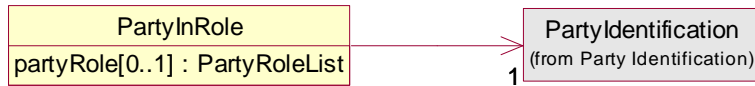
### 5.3.1. Catalogue Item Authorisation



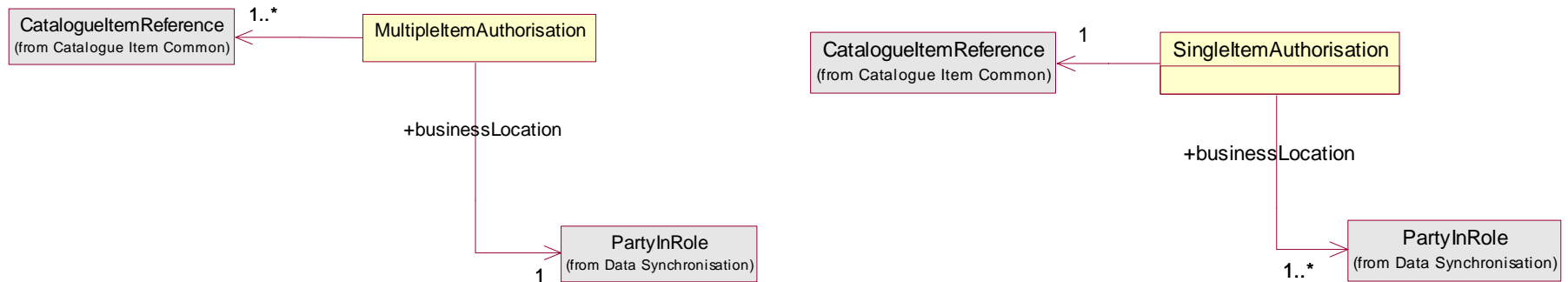
### 5.3.2. Catalogue Item Authorisation Response



### 5.3.3. Party In Role



### 5.3.4. Multiple and Single Item Authorisation



### 5.3.5. Code Lists

| Code List Name                      | Code List Description  |
|-------------------------------------|--|
| Item Authorisation Status Code List | Code list identifying the authorisation status within a specific location. |
| Code Name                           | Code Description   |
| AUTHORISE                           | Item is authorised for sale to a location.                                 |
| DEAUTHORISE                         | Item is deauthorised for sale to a location.                               |

## 6. Business Document Example

Not Applicable

## 7. Implementation Considerations

### 7.1. Use of Catalogue Item Authorisation for Store Openings and New Item Introductions

The Catalogue Item Authorisation Message supports both the store opening and new item introduction scenarios by allowing the sending of either many trade items to a single business location or one trade item to a multiple locations. In the message, these two scenarios are implemented as a choice. In the case of a store opening, it is recommended to use the “MultipleItemAuthorisation” construct. For the new item scenario, it is recommended to use the “SingleItemAuthorisation” construct (see class diagram). Note: the structure by design does not support multiple items to multiple business locations.

### 7.2. Use of Catalogue Item Authorisation Response for Store Openings and New Item Introductions

As a rule, the Catalogue Item Authorisation Response should resemble the structure of the originating Catalogue Item Authorisation. For example, if a Catalogue Item Authorisation was sent for one trade item to multiple business locations, the response should only contain one trade item. If a Catalogue Item Authorisation was sent for many trade items to a single business location, the response should only contain one business location. The Catalogue Item Authorisation Response supports both scenarios through the AuthorisationResponse class.

### 7.3. Reference between Catalogue Item Authorisation Response and the Catalogue Item Authorisation

During requirements gathering, it was decided that Item Authorisations are performed for individual items and there is no blanket acceptance or rejection of an entire Item Authorisation message. Because of this decision, there is no reference to the message identification of the originating Catalogue Item Authorisation in the Catalogue Item Authorisation Response.

## 8. Testing

### 8.1. Pass / Fail Criteria

Not Applicable

### 8.2. Sample Data

#### 8.2.1. Catalogue Item Authorisation

##### Single GTIN Multiple GLNs:

| Attribute               | Value                   |
|-------------------------|-------------------------|
| itemAuthorisationStatus | AUTHORISED              |
| authorisationDateTime   | 2004-01-10T12:00:01.000 |
| sender                  |                         |
| partyRole               | SELLER                  |
| Party Identification    | 0012345000359           |
| brandOwner              |                         |
| distributor             | 0012345000555           |
| manufacturer            | 0012345000111           |
| orderFrom               | 0012345000222           |
| receiver                |                         |
| partyRole               | BUYER                   |
| Party Identification    | 0012345005459           |
| CatalogueItemReference  |                         |
| gTIN                    | 14141414141414          |
| dataSource              | 11111111111111          |
| targetMarketCountryCode | US                      |
| businessLocation        |                         |
| partyRole               | WAREHOUSE_AND_OR_DEPOT  |
| Party Identification    | 0013345000333           |
| businessLocation        |                         |
| partyRole               | WAREHOUSE_AND_OR_DEPOT  |
| Party Identification    | 0012345000339           |

**Single GLN, Multiple GTINs:**

| Attribute               | Value                   |
|-------------------------|-------------------------|
| itemAuthorisationStatus | AUTHORISED              |
| authorisationDateTime   | 2004-01-10T12:00:01.000 |
| sender                  |                         |
| partyRole               | SELLER                  |
| Party Identification    | 0012345000359           |
| brandOwner              |                         |
| distributor             | 0012345000555           |
| manufacturer            | 0012345000111           |
| orderFrom               | 0012345000222           |
| receiver                |                         |
| partyRole               | BUYER                   |
| Party Identification    | 0012345005459           |
| businessLocation        |                         |
| partyRole               | WAREHOUSE_AND_OR_DEPOT  |
| Party Identification    | 0013345000333           |
| CatalogueItemReference  |                         |
| gTIN                    | 14141414343434          |
| dataSource              | 11111111111111          |
| targetMarketCountryCode | US                      |
| CatalogueItemReference  |                         |
| gTIN                    | 14141414141414          |
| dataSource              | 11111111111111          |
| targetMarketCountryCode | US                      |

**8.2.2. Catalogue Item Authorisation Response**
**Single GTIN Multiple GLNs:**

| Attribute                | Value         |
|--------------------------|---------------|
| sender                   |               |
| partyRole                | BUYER         |
| Party Identification     | 0012345005459 |
| distributor              | 0012345000555 |
| receiver                 |               |
| partyRole                | SELLER        |
| Party Identification     | 0012345000359 |
| businessLocationResponse |               |

| Attribute               | Value                  |
|-------------------------|------------------------|
| PartyIdentification     | 0012345000339          |
| partyRole               | STORE                  |
| responseStatus          | ACCEPTED               |
| CatalogueItemReference  |                        |
| gTIN                    | 14141414141414         |
| dataSource              | 11111111111111         |
| targetMarketCountryCode | US                     |
| businessLocation        |                        |
| PartyIdentification     | WAREHOUSE_AND_OR_DEPOT |
| partyRole               | 0013345000333          |
| businessLocation        |                        |
| PartyIdentification     | WAREHOUSE_AND_OR_DEPOT |
| partyRole               | 0012345000339          |

**Single GLN, Multiple GTINs:**

| Attribute                | Value                  |
|--------------------------|------------------------|
| sender                   |                        |
| partyRole                | BUYER                  |
| Party Identification     | 0012345005459          |
| distributor              | 0012345000555          |
| receiver                 |                        |
| partyRole                | SELLER                 |
| Party Identification     | 0012345000359          |
| businessLocationResponse |                        |
| PartyIdentification      | 0012345000339          |
| partyRole                | STORE                  |
| responseStatus           | ACCEPTED               |
| businessLocation         |                        |
| PartyIdentification      | WAREHOUSE_AND_OR_DEPOT |
| partyRole                | 0013345000333          |
| CatalogueItemReference   |                        |
| gTIN                     | 14141414343434         |
| dataSource               | 11111111111111         |
| targetMarketCountryCode  | US                     |
| CatalogueItemReference   |                        |
| gTIN                     | 14141414141414         |
| dataSource               | 11111111111111         |
| targetMarketCountryCode  | US                     |

## 9. Summary of Changes

| Change           | BMS Version | Associated CR Number |
|------------------|-------------|----------------------|
| Initial creation |             |                      |