



Business Message Standard (BMS) Despatch Advice

BMS Release: 2.4.0, BRG Name: eCom

Issue 3.1.3, 25-Sep-2007

Document Summary

| Document Item | Current Value |
|----------------------|---------------------------------|
| Document Title | Business Message Standard (BMS) |
| BMS Name | Despatch Advice |
| BMS Release | 2.4.0 |
| BRG Name | eCom |
| Document Number | Issue 3.1.3 |
| Date Last Modified | 25-Sep-2007 |
| Status | Approved |
| Owner | eCom BRG |
| BMS Template Version | 1.8 |

Change Request Reference

| Date of CR Submission to GSMP: | CR Submitter(s): | Refer to Change Request (CR) Number(s): |
|--------------------------------|--------------------------------|---|
| 20070703 | John RYU, GS1 Global Office | 07-000271 |
| 20070321 | Stef SPAAN, GS1 Netherlands | 07-000103 |
| 20041130 | GS1 | 04-000224 |
| 20041009 | GS1 France | 04-000178 |

Business Requirements Document (BRAD) Reference

| BRAD Title: | BRAD Date: | BRAD Version |
|--|------------|--------------|
| BRAD Despatch Advice Country of Processing and Origin | 20070606 | 0.0.4 |
| BRD Despatch Advice – Business Requirement Document | 20041111 | 1.0.9.3 |
| BRAD Upstream Standards – Despatch, Receipt and Consumption | 20041129 | 0.1.1 |
| BRD Exchange Traceability and Processing History Data of Beef Products (Slaughter to Retail) | 20051102 | 2.50 |

Document Change History

| Date of Change | Version | Changed By | Reason for Change | Summary of Change | Model Build # |
|----------------|---------|------------|-------------------|---|----------------|
| 20041231 | 2.0.0 | Eric Kauz | | Migration of BRD to standard BMS/BSD format | Not Applicable |

| Date of Change | Version | Changed By | Reason for Change | Summary of Change | Model Build # |
|----------------|---------|--------------|---|---|--|
| 20041231 | 2.0.0 | Rob Toole | | Completed BSD by adding GDD information and updated class diagram | Not Applicable |
| 20050103 | 2.1.1 | Coen Janssen | UIM + ebMeat | | Not Applicable |
| 20050304 | 2.1.2 | Coen Janssen | Review comments DTG and IRT | Several changes to chapter 7. Included example in chapter 8. | Not Applicable |
| 20050325 | 2.1.3 | Coen Janssen | Review comments DTG | Several changes to chapters 7 and 8. | Not Applicable |
| 20050421 | 2.2.0 | Coen Janssen | Public review comments including comments made in Vienna meeting. | Changed role names in use cases: Ship To → Receiver, Ship From → Shipper Functional changes: see chapter 12 | Not Applicable |
| 20050502 | 2.2.1 | John Ryu | Incorporated Peer Review (6699) model changes Textual and GDD updated still needed based on peer review (6699) | Replaced class diagram in chapter 7.2 Alphabetized attributes per Modelling Best Practices. Aesthetic changes to model. | Model P4CL: 6718 BSD P4CL: 6720 |
| 20050531 | 2.2.1 | John Ryu | Peer Review | | |
| 20050617 | 2.2.2 | Eric Kauz | Change to data types for measurementUnitCodeList Change of cardinality of carrier to 0..1 as per requirements. | | |
| 20050721 | 2.2.3 | Coen Janssen | Technical Design Public Review | Several cosmetic changes. Fixed references to requirements in paragraph 1.5.1. | |
| 20070627 | 3.0.0 | John Ryu | Initial Creation for BMS Release Version 2.4 Based on eCom BRG Teleconference 20070620 | Changes noted in Summary of changes | BSD P4CL: MDL P4CL: 9570 |
| 20070703 | 3.1.0 | John Ryu | Based on eCom BRG 20070703 Received motion for TSD Development and Peer Review. | Changes noted in Summary of changes | BSD p4CL: 9587 MDL P4CL: 9586 |
| 20070706 | 3.1.1 | John Ryu | Errata changes Based on peer review | Changes noted in Summary of changes | BSD P4CL: 9661 |

| Date of Change | Version | Changed By | Reason for Change | Summary of Change | Model Build # |
|----------------|---------|------------|----------------------|------------------------|-----------------------|
| 20070824 | 3.1.2 | John Ryu | Public Review | Public Review | BSD P4CL: 9806 |
| 20070925 | 3.1.3 | John Ryu | eCom BRG Approved | Update BMS to approved | BSD P4CL: 10006 |

Disclaimer

Whilst every effort has been made to ensure that the guidelines to use the GS1 standards contained in the document are correct, GS1 and any other party involved in the creation of the document HEREBY STATE that the document is provided without warranty, either expressed or implied, of accuracy or fitness for purpose, AND HEREBY DISCLAIM any liability, direct or indirect, for damages or loss relating to the use of the document. The document may be modified, subject to developments in technology, changes to the standards, or new legal requirements. Several products and company names mentioned herein may be trademarks and/or registered trademarks of their respective companies.

Table of Contents

| | |
|---|-----------|
| 1. Business Domain View | 6 |
| 1.1. Problem Statement / Business Need | 6 |
| 1.2. Objective..... | 6 |
| 1.3. Audience..... | 6 |
| 1.4. References | 6 |
| 1.5. Acknowledgements | 7 |
| 1.5.1. BRG Group..... | 7 |
| 1.5.2. Design Team Members | 8 |
| 2. Business Context | 8 |
| 3. Additional Technical Requirements Analysis..... | 8 |
| 3.1. Technical Requirements (optional)..... | 8 |
| 4. Business Transaction View | 9 |
| 4.1. Business Transaction Generate Despatch Advice Use Case Diagram | 9 |
| 4.1.1. Use Case Description..... | 9 |
| 4.1.2. Business Transaction Activity Diagram..... | 10 |
| 4.1.3. Business Transaction Sequence Diagram(s)..... | 10 |
| 4.2. Business Transaction Dispatch Notification Use Case Diagram | 11 |
| 4.2.1. Use Case Description..... | 11 |
| 5. Information Model (Including GDD Report) | 12 |
| 5.1. GDD Report..... | 12 |
| 5.1.1. Despatch Advice | 12 |
| 5.2. Class Diagrams | 23 |
| 5.3. Code Lists..... | 25 |
| 5.3.1. Change Reason Code List | 25 |
| 5.3.2. Incoterm Code List | 25 |
| 5.3.3. Transportation Method Type Code List..... | 26 |
| 6. Business Document Example | 28 |
| 7. Implementation Considerations..... | 29 |
| 8. Testing..... | 29 |
| 8.1. Pass / Fail Criteria | 29 |
| 8.2. Test Data | 29 |
| 9. Appendices | 30 |
| 10. Summary of Changes..... | 31 |

1. Business Domain View

1.1. Problem Statement / Business Need

Generally, the Despatch Advice enables one Shipper to provide information about the content of a shipment to one Receiver. Specifically, the Despatch Advice serves as a link to a prior agreement between Shipper and Receiver and is applicable to one or many Receiver destination points from one Shipper launch point. Furthermore, the Despatch Advice may be used to indicate the despatch of goods being returned by the Receiver. The Despatch Advice may be utilized downstream between retailers, suppliers, 3PLs, carriers and manufacturers as well as upstream between manufacturers, 3PLs and material suppliers.

1.2. Objective

The objective of the Despatch Advice is:

- To facilitate the receipt of goods
- To make the despatch advice applicable to a replenishment scenario where there is no link to an order but to a contract or other kind of agreement.
- To make the despatch advice applicable to multiple destination points
- To provide more detailed information about the shipment as well as the content of a shipment from a shipper and if applicable the shipper's warehouse to the receiver and his warehouse
- To make the despatch advice applicable for the despatch of goods being returned

1.3. Audience

Retailers, manufacturers, warehouses, material suppliers, carriers and any other third party such as a logistic service or 3PL provider involved in the despatch and receipt of goods.

1.4. References

| Reference # | Reference Name | Description |
|-------------|---|---|
| [Ref 1] | BRD Exchange Traceability and Processing History Data of Beef Products (Slaughter to Retail) Version 2.50 | |
| [Ref 2] | BRAD Upstream Standards – Despatch, Receipt & Consumption Version 0.1.1 | |
| [Ref3] | BRD Despatch Advice Version 1.0.9.3 | |
| [Ref4] | BMS Common Library Release Version 2.1 | The documented design of components that are used in multiple messages. |
| [Ref 5] | BRAD Despatch Advice Country of Processing and Origin Version 4 | Details the country of processing and origin requirements. |
| [Ref 6] | BMS Common Library Release Version 2.4 | The documented design of components that are used in multiple messages. |

1.5. Acknowledgements

The following is a list of individuals (and their companies) who participated in the creation, review and approval of this BMS.

1.5.1. BRG Group

| Function | Name | Company / organisation |
|-------------|-------------------|------------------------|
| BRG Chair | Carol EDISON | General Mills |
| BRG Manager | Jean Luc CHAMPION | GS1 Global Office |
| BRG Member | Ryohei ARIGA | Procter & Gamble |
| BRG Member | Rick BATTISTA | Roadway |
| BRG Member | Maureen BONITO | ISI Mars |
| BRG Member | Richard CHRESTA | GS1 Switzerland |
| BRG Member | Marilyn DODD | 3M |
| BRG Member | Sue DONARSKI | Schneider |
| BRG Member | Karina DUVINGER | GS1 Sweden |
| BRG Member | Chris EMMENT | Compass Services |
| BRG Member | Suzanne FASSLER | JC Penney |
| BRG Member | Don FLINT | CHEP |
| BRG Member | Klaus FORDERER | GS1 Germany |
| BRG Member | Wayne GINGERICH | Werner |
| BRG Member | Anders GRANGARD | GS1 Global Office |
| BRG Member | Steve HAMMOND | Compass |
| BRG Member | Rob HEATHER | GS1 UK |
| BRG Member | Tom HEIST | GS1 Global Office |
| BRG Member | Doug HILL | GS1 Denmark |
| BRG Member | Sandra HURD | CIT |
| BRG Member | James JENNINGS | Procter & Gamble |
| BRG Member | Fred KEMPKE | Unilever |
| BRG Member | Rita LAUR | GS1 Canada |
| BRG Member | Bill LOHSE | Data Tronics |
| BRG Member | Ana Paula MANIERO | GS1 Brazil |
| BRG Member | Eric MAREE | Accenture |
| BRG Member | Shanda MARVIN | Procter & Gamble |
| BRG Member | James MORRISON | Whirlpool |
| BRG Member | Dana MORTON | Fedex |
| BRG Member | Frank NAPOLI | LMI |
| BRG Member | Debby NOYES | Johnsonville |
| BRG Member | Steven PEREIRA | GS1 Australia |
| BRG Member | Marie PERRY | Coca Cola |

| Function | Name | Company / organisation |
|------------|------------------|------------------------|
| BRG Member | Natascha POTTIER | GS1 France |
| BRG Member | Steve ROSENBERG | GS1 US |
| BRG Member | John RYU | GS1 Global Office |
| BRG Member | Kazuya SATO | GS1 Japan |
| BRG Member | Jon SHARRATT | Target |
| BRG Member | Andy SLOW | GS1 Singapore |
| BRG Member | Matthew SMITH | Bunnings |
| BRG Member | Tan Jin SOON | GS1 Singapore |
| BRG Member | Ste SPAAN | GS1 Netherlands |
| BRG Member | Chi YANG | UPS |

1.5.2. Design Team Members

| Function | Name | Organisation |
|---------------------------|----------------|-------------------|
| Modeler | John RYU | GS1 Global Office |
| XML Technical Designer | Dipan ANARKAT | GS1 Global Office |
| EANCOM Technical Designer | Not Applicable | |
| Peer Reviewer | Giovanni BIFFI | GS1 Global Office |

2. Business Context

| Context Category | Value(s) |
|----------------------|------------|
| Industry | All |
| Geopolitical | Global |
| Product | All |
| Process | Deliver |
| System Capabilities | GS1 System |
| Official Constraints | None |

3. Additional Technical Requirements Analysis

Not Applicable

3.1. Technical Requirements (optional)

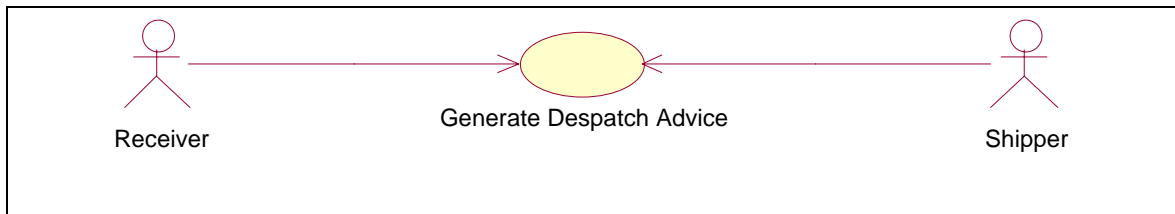
| Number | Statement | Rationale |
|--------|-----------|-----------|
| | | |

4. Business Transaction View

4.1. Business Transaction Generate Despatch Advice Use Case Diagram

The Despatch Advice must contain certain information, in line item format, to convey comparative information to the Receiver. The Despatch Advice therefore will provide for the identification of the individual lines within the Despatch Advice by line sequence number. The Despatch Advice may provide for a reference to other related documents, such as the Order, Delivery Note and Consignment. The Despatch Advice may also include a reference to a contract and may include the line sequence numbers from the documents Order, Delivery Note, Consignment and Contract

Figure 4-1 Use Case Generate Despatch Advice

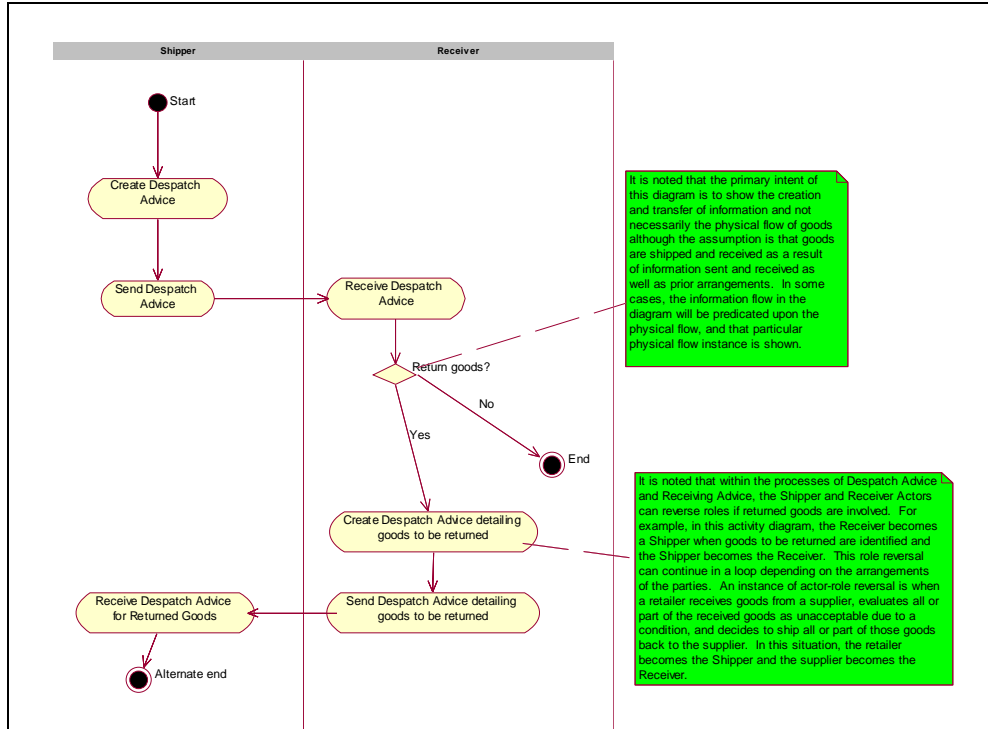


4.1.1. Use Case Description

| Use Case ID | GDA | | | | | | | | | |
|-----------------------------|---|--|-------|---------------|---|---------|--|---|----------|------------------------------------|
| Use Case Name | Generate Despatch Advice | | | | | | | | | |
| Use Case Description | Describes a complete process whereby a Shipper generates a Despatch Advice based on information about the order and the product. | | | | | | | | | |
| Actors (Goal) | Receiver and Shipper | | | | | | | | | |
| Performance Goals | None | | | | | | | | | |
| Preconditions | Master data alignment of locations (GLNs) and products (GTINs). | | | | | | | | | |
| Post conditions | Check of the received physical goods with the information of the Despatch Advice and the check of the state of the goods themselves. | | | | | | | | | |
| Scenario | <p>Begins when... The Receiver receives a shipment of goods accompanied or preceded by the Despatch Advice or Shipping Documents.</p> <p>Continues with...</p> <table border="1"> <thead> <tr> <th>Step #</th> <th>Actor</th> <th>Activity Step</th> </tr> </thead> <tbody> <tr> <td>1</td> <td>Shipper</td> <td>Shipper issues the Despatch Advice containing the information of the actual physical shipment.</td> </tr> <tr> <td>2</td> <td>Receiver</td> <td>Receiver receives Despatch Advice.</td> </tr> </tbody> </table> <p>Ends when... If necessary, Receiver creates and sends Despatch Advice to Shipper indicating returned goods. *See role reversal note in activity and sequence diagrams.</p> | Step # | Actor | Activity Step | 1 | Shipper | Shipper issues the Despatch Advice containing the information of the actual physical shipment. | 2 | Receiver | Receiver receives Despatch Advice. |
| Step # | Actor | Activity Step | | | | | | | | |
| 1 | Shipper | Shipper issues the Despatch Advice containing the information of the actual physical shipment. | | | | | | | | |
| 2 | Receiver | Receiver receives Despatch Advice. | | | | | | | | |
| Alternative Scenario | Not Applicable | | | | | | | | | |
| Related Requirements | Not Applicable | | | | | | | | | |
| Related Rules | Not Applicable | | | | | | | | | |

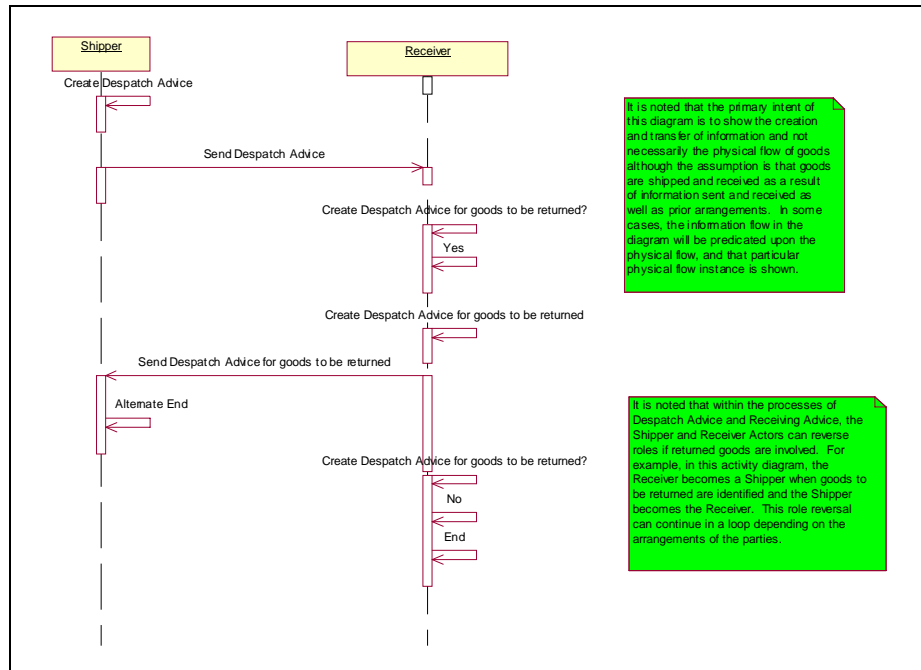
4.1.2. Business Transaction Activity Diagram

Figure 4-2 Activity Diagram Generate Despatch Advice



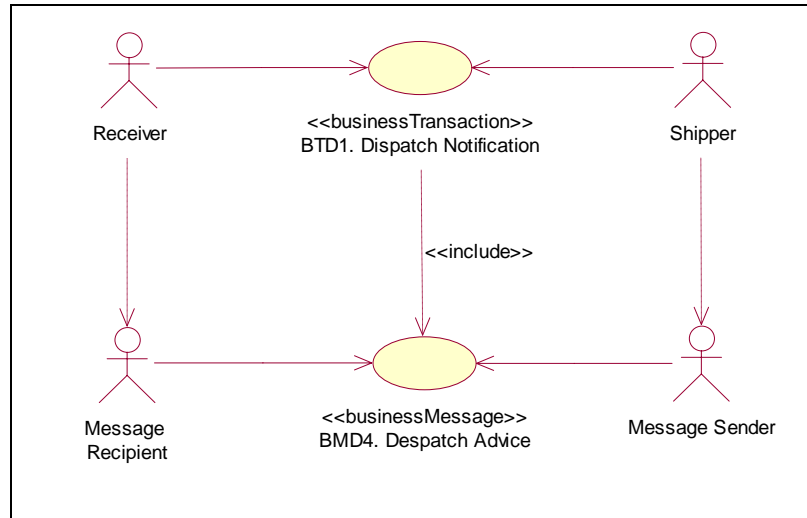
4.1.3. Business Transaction Sequence Diagram(s)

Figure 4-3 Sequence Diagram Generate Despatch Advice



4.2. Business Transaction Dispatch Notification Use Case Diagram

Figure 4-4 Business Transaction Dispatch Notification



4.2.1. Use Case Description

| Use Case ID | BTD1 | | | | | | |
|-----------------------------|---|---|-------|---------------|----|-----------|---|
| Use Case Name | Dispatch Notification | | | | | | |
| Use Case Description | <p>The Dispatch Notification enables the supplier / carrier to provide detailed information about the content of a shipment and enables a buyer to reconcile or confirm the physical shipment against the order; it provides a mirror of the shipment that is to be made in terms of package details and in terms of structure of the delivery.</p> <p>The Dispatch Notification is sent by the Ship From party to the Ship To party when the goods are sent - goods being sent being considered as in transit.</p> | | | | | | |
| Actors (Goal) | <p>Shipper: To notify the receiver in advance of the contents of a shipment.</p> <p>Receiver: To be informed in advance about the contents of a shipment.</p> | | | | | | |
| Performance Goals | The information must be received prior to the arrival of the actual shipment. | | | | | | |
| Preconditions | Dispatch Notification to be sent | | | | | | |
| Post conditions | Dispatch Notification received | | | | | | |
| Scenario | <p>Begins when:</p> <p>After the shipment has been picked, packed, labelled and loaded in order to guarantee that the information sent is correct.</p> <p>Continues with:</p> <table border="1"> <thead> <tr> <th>Step #</th> <th>Actor</th> <th>Activity Step</th> </tr> </thead> <tbody> <tr> <td>1.</td> <td>Ship From</td> <td>Sends Despatch Advice to the Ship To party.</td> </tr> </tbody> </table> <p>Ends when: Ship to receives the despatch advice.</p> | Step # | Actor | Activity Step | 1. | Ship From | Sends Despatch Advice to the Ship To party. |
| Step # | Actor | Activity Step | | | | | |
| 1. | Ship From | Sends Despatch Advice to the Ship To party. | | | | | |
| Alternative Scenario | Not Applicable | | | | | | |
| Related Requirements | Not Applicable | | | | | | |
| Related Rules | Not Applicable | | | | | | |

5. Information Model (Including GDD Report)

5.1. GDD Report

5.1.1. Despatch Advice

| Class (ABIE) | Attribute (BBIE) | Association (ASBIE) | Secondary Class | Definition | Multiplicity | Data Type Components | Related Requirements |
|------------------------|------------------|---------------------|-------------------------|--|--------------|----------------------|---|
| ConsignedItemWeight | | | | Total weight of a trade item within a consignment (across logistic units). | | | [BRD Exchange Traceability and Processing History Data of Beef Products (Slaughter to Retail) Version 2.50] |
| | | | TradeItemIdentification | This information on TradeItemIdentification for ConsignedItemWeight. | 1..1 | | [BRD Exchange Traceability and Processing History Data of Beef Products (Slaughter to Retail) Version 2.50] |
| | | | UnitMeasurement | This information on UnitMeasurement for ConsignedItemWeight. | 1..* | | [BRD Exchange Traceability and Processing History Data of Beef Products (Slaughter to Retail) Version 2.50] |
| ConsignmentInformation | | | | Information on goods that will be paid for when they are sold or consumed. | | | [BRD Exchange Traceability and Processing History Data of Beef Products (Slaughter to Retail) Version 2.50] |

| Class (ABIE) | Attribute (BBIE) | Association (ASBIE) | Secondary Class | Definition | Multiplicity | Data Type Components | Related Requirements |
|--------------|------------------|---------------------------|---------------------|---|--------------|----------------------|---|
| | | | ConsignedItemWeight | This information on ConsignedItemWeight for ConsignmentInformation. | 0..* | | [BRD Exchange Traceability and Processing History Data of Beef Products (Slaughter to Retail) Version 2.50] |
| | | | PackageInformation | This information on PackageInformation for ConsignmentInformation. | 1..1 | | [BRD Exchange Traceability and Processing History Data of Beef Products (Slaughter to Retail) Version 2.50] |
| | | consignmentIdentification | Reference | Number that identifies the consignment. (In case consignment consists of one shipment; it coincides with the shipment number).The Consignment Number; AI (401); is allocated by a freight forwarder; (or a carriers acting as a freight forwarder); or a consignor; but only if the prior agreement of the freight forwarder is given. Consignment: A logical grouping of goods (one or more physical entities) that is intended to be transported as a whole from a Shipper (Consignor) to a Receiver (Consignee) by a carrier or freight forwarder. | 0..1 | | [BRD Exchange Traceability and Processing History Data of Beef Products (Slaughter to Retail) Version 2.50] |
| | | | UnitMeasurement | This information on UnitMeasurement for ConsignmentInformation. | 0..* | | [BRD Exchange Traceability and Processing History Data of Beef Products (Slaughter to Retail) Version 2.50] |

| Class (ABIE) | Attribute (BBIE) | Association (ASBIE) | Secondary Class | Definition | Multiplicity | Data Type Components | Related Requirements |
|---------------------------------|--------------------------|---------------------|-----------------|---|--------------|----------------------|---|
| DeliveryAndTransportInformation | | | | Information with regards to the transportation and delivery of goods. | | | BRD Exchange Traceability and Processing History Data of Beef Products (Slaughter to Retail) Version 2.50 |
| | deliveryOfTransportTerms | | | Code specifying the terms of delivery or transport. | 0..1 | Code. Content | [BRAD Upstream Standards – Despatch; Receipt & Consumption Version 0.1.1] {7.1.1-13} |
| | licensePlate | | | Vehicle license plate/Aircraft number identifying a means of transport. | 0..1 | Text. Content | [BRD Exchange Traceability and Processing History Data of Beef Products (Slaughter to Retail) Version 2.50] |
| | modeOfTransport | | | Code specifying the name of a mode of transport. | 0..1 | Code. Content | [BRD Exchange Traceability and Processing History Data of Beef Products (Slaughter to Retail) Version 2.50] |
| | | billOfLadingNumber | Reference | Bill of lading: A document which evidences a contract of carriage and the taking over or loading of goods by the carrier; and by which the carrier undertakes to deliver the goods against surrender of the document. | 0..1 | | [BRAD Upstream Standards – Despatch; Receipt & Consumption Version 0.1.1] {7.1.1-12} |

| Class (ABIE) | Attribute (BBIE) | Association (ASBIE) | Secondary Class | Definition | Multiplicity | Data Type Components | Related Requirements |
|----------------|------------------|---------------------|---------------------------------------|--|--------------|----------------------|---|
| DespatchAdvice | | | | The DespatchAdvice class is the data class that creates the advice message that the Shipper sends to the Receiver. This class inherits data directly from the class called document; which means it inherits the attributes contentVersion; creation-Date; documentStructureVersion and lastUpdateDate. DespatchAdvice has relationships with other classes as well; that allow the DespatchAdvice message to have meaning when sent to the Receiver. It is important to note that every class serves the root class DespatchAdvice. The classes that DespatchAdvice directly “touches” are in turn served by other classes that provide intelligence through direct and indirect relationships to the root class. | | | [BRAD Upstream Standards – Despatch; Receipt & Consumption Version 0.1.1] |
| | | | Consignment Information | This information on ConsignmentInformation for DespatchAdvice. | 0..1 | | [BRD Exchange Traceability and Processing History Data of Beef Products (Slaughter to Retail) Version 2.50] |
| | | | DeliveryAnd TransportInformation | This information on DeliveryAndTransportInformation for DespatchAdvice. | 0..1 | | [BRAD Upstream Standards – Despatch; Receipt & Consumption Version 0.1.1][7.1.1-10; 11] |
| | | | DespatchAdviceItemContainmentLineItem | This information on DespatchAdviceItemContainmentLineItem for DespatchAdvice. | 1..* | | [BRD Despatch Advice Version 1.0.9.3] |

| Class (ABIE) | Attribute (BBIE) | Association (ASBIE) | Secondary Class | Definition | Multiplicity | Data Type Components | Related Requirements |
|--------------|------------------|------------------------------|------------------------------------|--|--------------|----------------------|--|
| | | | DespatchAdviceLogisticUnitLineItem | This information on DespatchAdviceLogisticUnitLineItem for DespatchAdvice. | 1..* | | [BRD Despatch Advice Version 1.0.9.3] |
| | | | DespatchInformation | This information on DespatchInformation for DespatchAdvice. | 1..1 | | [BRD Despatch Advice Version 1.0.9.3] |
| | | | Document | Used to specify basic information about the content of the message including version number; creation date and time. | 1..1 | | [BRD Despatch Advice Version 1.0.9.3] |
| | | purchaseConditions | DocumentOrDocumentLineReference | Reference to the business document that describes the commercial conditions under which the goods are delivered. | 0..1 | | [BRD Despatch Advice Version 1.0.9.3] |
| | | purchaseOrder | DocumentOrDocumentLineReference | The identification for the order assigned by the buyer. | 0..1 | | [BRD Despatch Advice Version 1.0.9.3] |
| | | despatchAdviceIdentification | EntityIdentification | Unique identifier for the Despatch Advice Message. | 1..1 | | [BRD Despatch Advice Version 1.0.9.3] |
| | | carrier | PartyIdentification | Uniquely identifies the entity that transports the shipment. | 0..1 | | [BRAD Upstream Standards – Despatch; Receipt & Consumption Version 0.1.1] {7.1.1-9 (opt) } |
| | | inventoryLocation | PartyIdentification | Identification of the location where the goods will be or have been stored. | 0..1 | | [BRAD Upstream Standards – Despatch; Receipt & Consumption Version 0.1.1] {7.1.1-8} |
| | | pickUpLocation | PartyIdentification | Party where goods are collected or taken over by the carrier (i.e. if other than consignor). | 0..1 | | [BRD Despatch Advice Version 1.0.9.3] |

| Class (ABIE) | Attribute (BBIE) | Association (ASBIE) | Secondary Class | Definition | Multiplicity | Data Type Components | Related Requirements |
|--------------|------------------|---------------------------|---------------------|---|--------------|----------------------|---|
| | | receiver | PartyIdentification | A party who engages in receiving goods. | 1..1 | | [BRAD Upstream Standards – Despatch; Receipt & Consumption Version 0.1.1]{7.1.1-4} |
| | | shipFrom | PartyIdentification | Identification of the location from where goods will be or have been shipped. | 0..1 | | [BRAD Upstream Standards – Despatch; Receipt & Consumption Version 0.1.1]{7.1.1-7} |
| | | shipper | PartyIdentification | A party who engages in shipping goods. | 1..1 | | [BRAD Upstream Standards – Despatch; Receipt & Consumption Version 0.1.1]{7.1.1-5} |
| | | shipTo | PartyIdentification | Identification of the location to where goods will be or have been shipped. | 1..1 | | [BRAD Upstream Standards – Despatch; Receipt & Consumption Version 0.1.1]{7.1.1-6} |
| | | contract | Reference | The specific contract referenced by the Despatch Advice. | 0..1 | | [BRD Exchange Traceability and Processing History Data of Beef Products (Slaughter to Retail) Version 2.50] |
| | | declarantsCustomsIdentity | Reference | Reference to the party whose posted bond or security is being declared in order to accept responsibility for a goods declaration and the applicable duties and taxes. | 0..1 | | [BRD Exchange Traceability and Processing History Data of Beef Products (Slaughter to Retail) Version 2.50] |

| Class (ABIE) | Attribute (BBIE) | Association (ASBIE) | Secondary Class | Definition | Multiplicity | Data Type Components | Related Requirements |
|---------------------------------------|------------------|----------------------|-----------------|--|--------------|----------------------|---|
| | | deliveryNote | Reference | The delivery note accompanying the despatch advice. | 0..1 | | [BRD Exchange Traceability and Processing History Data of Beef Products (Slaughter to Retail) Version 2.50] |
| | | productCertification | Reference | Number assigned by a governing body (or their agents) to a product which certifies compliance with a standard. | 0..1 | | [BRD Exchange Traceability and Processing History Data of Beef Products (Slaughter to Retail) Version 2.50] |
| | | specification | Reference | An essential technical requirement for items; materials; or services; including the procedures to be used to determine whether the requirement has been met. Specifications may also include requirements for preservation; packaging; packing; and marking. | 0..1 | | [BRD Exchange Traceability and Processing History Data of Beef Products (Slaughter to Retail) Version 2.50] |
| DespatchAdviceItemContainmentLineItem | | | | Information at the line item level contained within an item on a despatch advice. | | | [BRD Exchange Traceability and Processing History Data of Beef Products (Slaughter to Retail) Version 2.50] and [BRAD Upstream Standards – Despatch; Receipt & Consumption Version 0.1.1] and BRAD Despatch Advice Country of Processing and Origin Version 4 |

| Class (ABIE) | Attribute (BBIE) | Association (ASBIE) | Secondary Class | Definition | Multiplicity | Data Type Components | Related Requirements |
|--------------|-------------------------|---------------------|-----------------|---|--------------|---|---|
| | countryOfLastProcessing | | | Indication of the country in which the trade item was processed, transformed, or proven last before its import. | 0..1 | ISO_3166_1Code | [BRAD Despatch Advice Country of Processing and Origin Version 4] {BR1} |
| | countryOfOrigin | | | The country code in which the goods have been produced or manufactured, according to criteria laid down for the purposes of application of the Customs tariff, of quantitative restrictions, or of any other measure related to trade | 0..1 | ISO_3166_1Code | [BRAD Despatch Advice Country of Processing and Origin Version 4] {BR2} |
| | freeGoodsQuantity | | | Quantity of goods which are free of charge. | 0..1 | Quantity. Content; Quantity Unit. Code; Quantity Unit. Code List Agency. Identifier | [BRD Exchange Traceability and Processing History Data of Beef Products (Slaughter to Retail) Version 2.50] |
| | quantityContained | | | The number of units shipped of the order unit or associated item. The unit of measure for the quantity is assumed to be the same as for the associated item. Thus the quantity must be specified in the same unit of measure as the item; e.g. case; each; etc... | 1..1 | Quantity. Content; Quantity Unit. Code; Quantity Unit. Code List Agency. Identifier | [BRAD Upstream Standards – Despatch; Receipt & Consumption Version 0.1.1]{7.1.1-27; 28} |

| Class (ABIE) | Attribute (BBIE) | Association (ASBIE) | Secondary Class | Definition | Multiplicity | Data Type Components | Related Requirements |
|--------------|-------------------|--------------------------|---------------------|--|--------------|---|---|
| | requestedQuantity | | | The quantity that was ordered or planned to be delivered. | 0..1 | Quantity. Content; Quantity Unit. Code; Quantity Unit. Code List Agency. Identifier | [BRD Exchange Traceability and Processing History Data of Beef Products (Slaughter to Retail) Version 2.50] |
| | | | ItemContainment | This information on ItemContainment for DespatchAdviceItemContainmentLineItem. | 1..1 | | [BRD Exchange Traceability and Processing History Data of Beef Products (Slaughter to Retail) Version 2.50] |
| | | locationOfLastProcessing | LocationInformation | The name and address of the last processing location in which the trade item was processed or transformed. | 0..1 | | [BRAD Despatch Advice Country of Processing and Origin Version 4] {BR1} |
| | | locationOfOrigin | LocationInformation | The name and address of location of origin in which the goods have been produced or manufactured, according to criteria laid down for the purposes of application of the Customs tariff, of quantitative restrictions, or of any other measure related to trade. | 0..1 | | [BRAD Despatch Advice Country of Processing and Origin Version 4] {BR2} |
| | | | QuantityVariance | This information on QuantityVariance for DespatchAdviceItemContainmentLineItem. | 0..* | | [BRD Exchange Traceability and Processing History Data of Beef Products (Slaughter to Retail) Version 2.50] |

| Class (ABIE) | Attribute (BBIE) | Association (ASBIE) | Secondary Class | Definition | Multiplicity | Data Type Components | Related Requirements |
|------------------------------------|------------------|---------------------|---------------------------------------|---|--------------|----------------------|---|
| DespatchAdviceLogisticUnitLineItem | | | | Information on the line item contents of a single despatch unit; within the context of the despatch Advice. | | | [BRAD Upstream Standards – Despatch; Receipt & Consumption Version 0.1.1] |
| | | | DespatchAdviceItemContainmentLineItem | This information on DespatchAdviceItemContainmentLineItem for DespatchAdviceLogisticUnitLineItem. | 0..* | | [BRAD Upstream Standards – Despatch; Receipt & Consumption Version 0.1.1]{7.1.1-20; 22; 23} |
| | | | LogisticUnits | This information on LogisticUnits for DespatchAdviceLogisticUnitLineItem. | 1..1 | | [BRAD Upstream Standards – Despatch; Receipt & Consumption Version 0.1.1]{7.1.1-20; 22; 23} |
| PackageInformation | | | | To specify amount and type of logistic unit(s). | | | [BRD Exchange Traceability and Processing History Data of Beef Products (Slaughter to Retail) Version 2.50] |
| | numberOfUnits | | | Indicates the quantity contained within a package. | 1..1 | Numeric. Content | [BRD Exchange Traceability and Processing History Data of Beef Products (Slaughter to Retail) Version 2.50] |
| | packageType | | | Identifies the means of grouping of products within a shipment. | 0..1 | Code. Content | [BRD Exchange Traceability and Processing History Data of Beef Products (Slaughter to Retail) Version 2.50] |

| Class (ABIE) | Attribute (BBIE) | Association (ASBIE) | Secondary Class | Definition | Multiplicity | Data Type Components | Related Requirements |
|------------------|------------------|---------------------|-----------------|---|--------------|--|---|
| QuantityVariance | | | | Information with regards to any difference between what was ordered and what is ready for or has been despatched. | | | [BRD Exchange Traceability and Processing History Data of Beef Products (Slaughter to Retail) Version 2.50] |
| | changeReason | | | To specify the reason for a change of the quantity. | 1..1 | Code. Content | [BRD Exchange Traceability and Processing History Data of Beef Products (Slaughter to Retail) Version 2.50] |
| | varianceQuantity | | | To specify any variances between what was ordered and what is ready for or has been despatched. | 1..1 | Quantity. Content;Quantity Unit. Code;Quantity Unit. Code List Agency. Identifier | [BRD Exchange Traceability and Processing History Data of Beef Products (Slaughter to Retail) Version 2.50] |

5.2. Class Diagrams

Figure 5-1 Despatch Advice Class Diagram

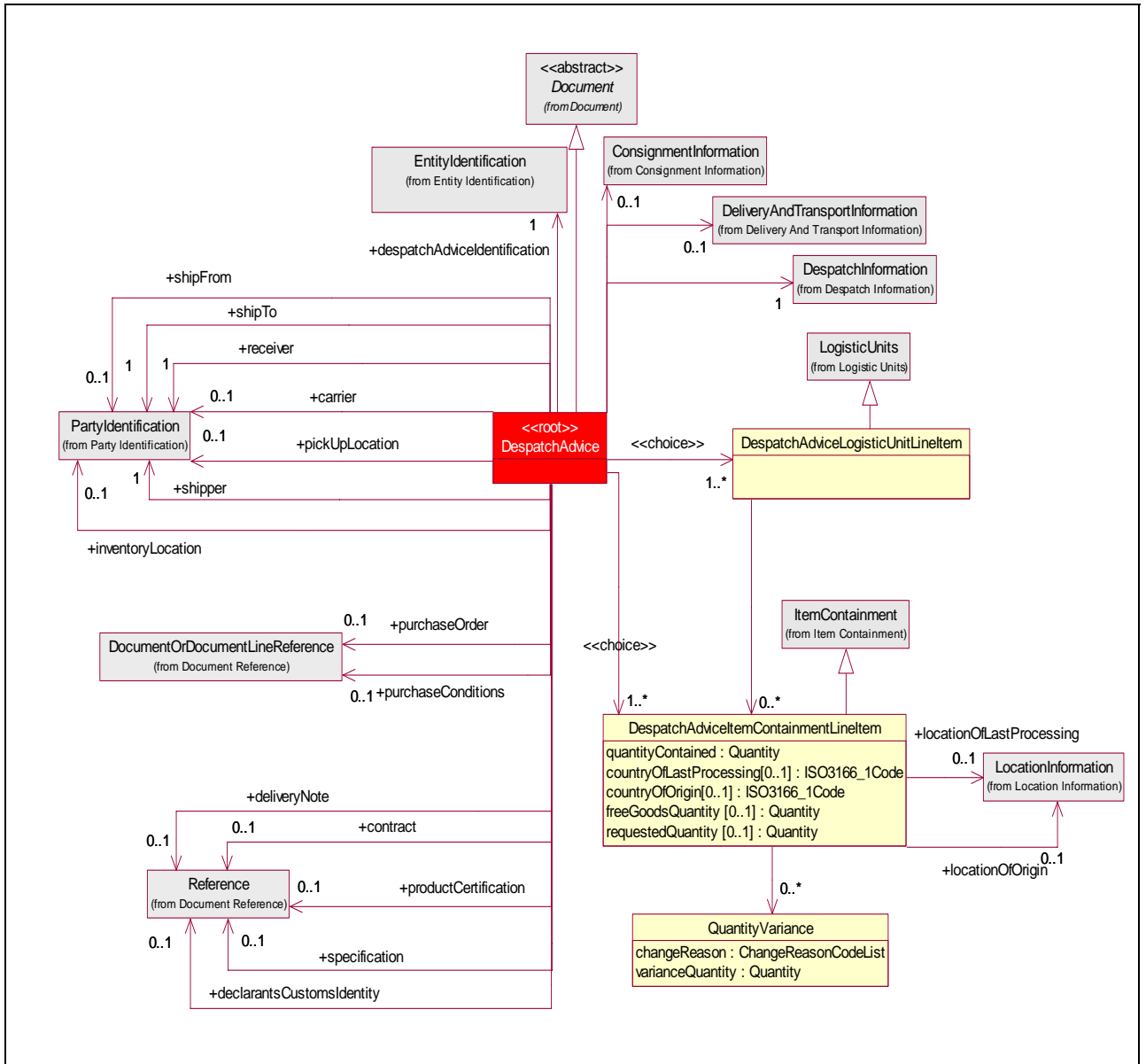
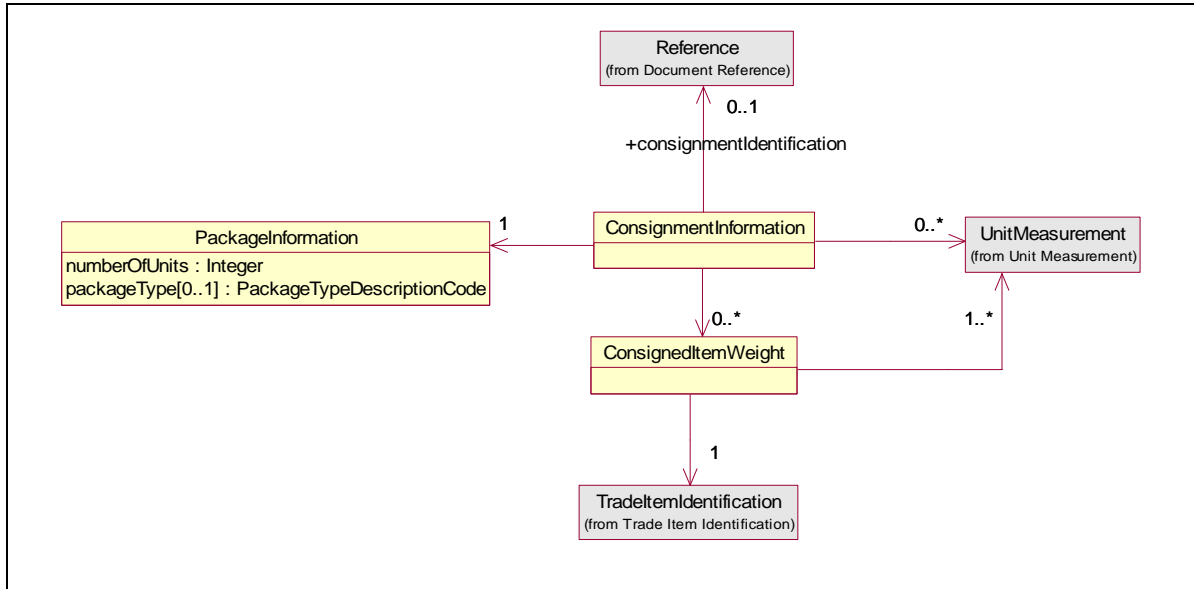
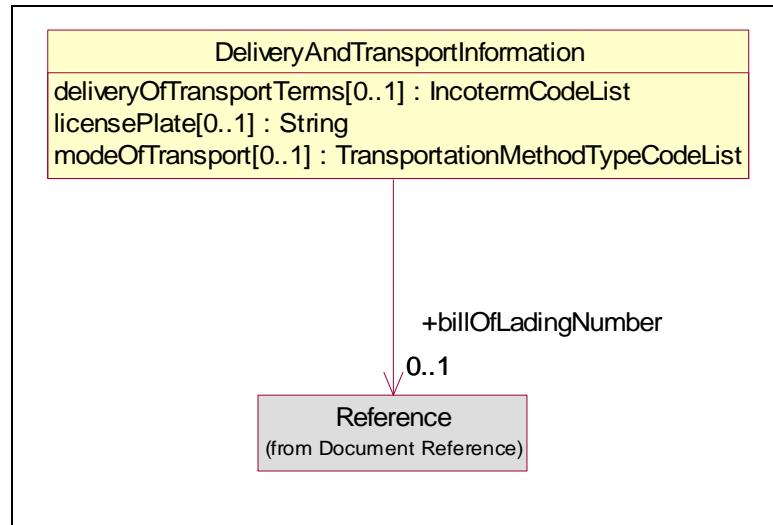


Figure 5-2 Consignment Information Class Diagram

Figure 5-3 Delivery and Transport Information Class Diagram


5.3. Code Lists

Following Code Lists are implemented in the Despatch Advice:

- Change Reason Code List (Updated missing definitions for BMS Release 2.4)
- Incoterm Code List
- Transportation Method Type Code List (Updated missing definitions for BMS Release 2.4)

5.3.1. Change Reason Code List

| Code Value | Code Definition |
|----------------------|--|
| ARTICLE_CODE_UNKNOWN | The article code is not known. |
| DAMAGED | If a shipment or any part thereof, is lost or damaged in transit and so received, the person making such receipt is responsible for securing proper notation of damage or shortage from the delivering carrier, on the bill of lading, so proper claims may be filed with the carrier. |
| ITEM_NOT_ORDERED | Item was not requested. |
| OUT_OF_INVENTORY | Not available for sale or use. |
| PACK_DIFFERENCE | There is a pack deviation from the standard or norm. |

5.3.2. Incoterm Code List

| Code Value | Code Definition |
|------------|--------------------------------|
| CFR | Cost and Freight |
| CIF | Cost, Insurance and Freight |
| CIP | Carriage and Insurance Paid To |
| CPT | Carriage Paid To |
| DAF | Delivered at Frontier |
| DDP | Delivered Duty Paid |
| DDU | Delivered Duty Unpaid |
| DEQ | Delivered Ex Quay |
| DES | Delivered Ex Ship |
| EXW | Ex Works |
| FAS | Free Alongside Ship |
| FCA | Free Carrier |
| FOB | Free On Board |

5.3.3. Transportation Method Type Code List

| Code Value | Code Definition |
|--------------------------------------|---|
| AIR | A movement of material by air |
| AIR_CHARTER | A movement of material by chartered aircraft. |
| AIR_EXPRESS | A movement of material by air express service. |
| AIR_FREIGHT | A movement of material by freight air |
| BEST_WAY_SHIPPERS_OPTION | A movement the best way, choice is left to the shipper. |
| BOOK_POSTAL | A movement of material by postal of or relating to the system for delivering mail |
| BUS | To specify that the means of transportation is a bus. |
| CAB | To specify that the means of transport is a taxi |
| CONSOLIDATION | A movement of multiple shipments to a single destination. |
| CONTRACT_CARRIER | An agreement between two or more parties, especially one that is written or spoken and enforceable by law. |
| CUSTOMER_PICKUP | Cargo will be picked up by the customer |
| CUSTOMER_PICKUP_OR_CUSTOMERS_EXPENSE | Cargo will be picked up by the customer, or else it will be picked up at his expense |
| EXPEDITED_TRUCK | A movement of material by expedited truck. |
| GEOGRAPHIC_RECEIVING | A collection of shipments that involve a single origin, multiple destinations, and a single trailer, and are paid under a single freight bill. |
| GEOGRAPHIC_RECEIVING_SHIPPING | A collection of shipments that involve a single origin, multiple destinations, and a single trailer, and are paid under a single freight bill. |
| GEOGRAPHIC_SHIPPING | A collection of shipments that involve a single origin, multiple destinations, and a single trailer, and are paid under a single freight bill. |
| INLAND_WATERWAY | Transport by which goods are moved via an inland body of water. |
| INTERMODAL_PIGGYBACK | A tractor trailer is placed (usually without the tractor) on a flat car or specially-designed rail car. |
| LESS_THAN_TRUCK_LOAD | The transportation of relatively small freight. The alternatives to LTL carriers are parcel carriers or full truckload carriers |
| MOTOR | A movement of material by motor carrier means a contract carrier, a common carrier or a private carrier of property or passengers by motor vehicle. |
| MOTOR_COMMON_CARRIER | Any person who or which undertakes, whether directly or by a lease or any other arrangement, to transport passengers or household goods. |
| MOTOR_FLATBED | Trailer or container without raised sides or ends. |

| Code Value | Code Definition |
|------------------------|---|
| MOTOR_PACKAGE_CARRIER | A movement of material by motor package carrier. |
| MOTOR_TRUCKLOAD | A movement of material by motor truckload. |
| MOTOR_VAN | A movement of material by motor van. |
| MUTUALLY_DEFINED | Mutually defined transport |
| OCEAN | Transport by sea/ocean |
| PARCEL_POST | Transport by parcel postal service that handles packages. |
| PIPELINE | Transport by pipeline. |
| POOL_TO_POOL | Transport by pool to pool. |
| POOLED_AIR | A consolidated air shipment with other shipments into full air shipments bound for the same destination, or by pooling your shipments on one air shipment headed in a general line to all your delivery points. Either way, it means your shipments are not handled again until they arrive, which minimizes damage and loss claims and expedites transit times. |
| POOLED_PIGGYBACK | A consolidated movement of material by a trailer on a railcar. |
| POOLED_RAIL | A consolidated rail shipment with other shipments into full rail shipments bound for the same destination, or by pooling your shipments on one rail shipment headed in a general line to all your delivery points. Either way, it means your shipments are not handled again until they arrive, which minimizes damage and loss claims and expedites transit times. |
| POOLED_TRUCK | A consolidated shipment with other shipments into full truckloads bound for the same destination, or by pooling your shipments on one truck headed in a general line to all your delivery points. Either way, it means your shipments are not handled again until they arrive, which minimizes damage and loss claims and expedites transit times. |
| PRIVATE_CARRIER | A code indicating privately owned transport. |
| PRIVATE_PARCEL_SERVICE | A code indicating privately owned parcel service. |
| PRIVATE_VESSEL | A code indicating privately owned ship. |
| RAIL | A movement of material to the consignee via rail. |
| ROADRAILER | In railroad terminology a roadrailer is a highway trailer that is specially equipped for use in railroad intermodal service. The advantage of using roadrailers is that due to their construction, the trailers can be pulled directly behind other freight equipment without the use of trailer flatcars. |
| SEA_AIR | The cargo is being moved by more than one transport means in succession: first by ship then by plane. |

| Code Value | Code Definition |
|----------------|--|
| STEAM_SHIP | A steamboat or steamship, sometimes called a steamer, is a boat or vessel that is propelled by steam power driving a propeller or paddlewheel. The term steamboat is usually used to refer to smaller steam-powered boats working on lakes and rivers, particularly riverboats in the USA; steamship generally refers to steam powered ships capable of carrying a (ship's) boat. Nuclear powered ships and submarines use steam to drive turbines, but are not referred to as steamships or steamboats. |
| SUPPLIER_TRUCK | A code indicating transport by a truck owned by the supplier |

6. Business Document Example

The following is an example of a despatch advice message. The message is sent out on July 31, 2007 11 AM. The message is identified with the unique identifier KC.

Parties

- Material Supplier (Shipper and Content Owner 8812345678903)
- Manufacturer (Receiver 8712345678913)
- Manufacturer Ship To (8712345678921)

Referenced Purchase Order

Purchase Order 933, from Manufacturer (8712345678913) Date 2004-04-12, Line Item 25

Despatch Information

Actual Ship Date Time: July 4, 2007 300 PM

Despatch Advice Logistic Line Item

Package Type: PE (Pallet, Modular)

Logistics Unit Identification SSCC 881234567000010112

Despatch Advice Item Containment Line Item

Country of Origin: Costa Rica

Item GTIN: 08712345678906

Quantity: 700

Delivery Note References

Referenced Date Time: April 24, 2007 T 900 AM

Referenced Identification: DN

Line Item Number: 1

7. Implementation Considerations

The Despatch Advice should also include the line sequence numbers from the documents (Purchase Order and Purchase Conditions) that can be referenced to. These line sequence numbers for referenced documents are optional.

The idea behind this is that if a despatch advice refers to one order or contract or despatch note or consignment note the reference is identified at the header level and that then applies to all item lines.

If a despatch advice is referring to more than one order or contract or despatch note or consignment note then the reference is identified at the detail level through the DetailLevelReference.

Table below illustrates references.

| Despatch Advice Line Number | Reference Identification and Date | Referenced Line Number |
|-----------------------------|-------------------------------------|------------------------|
| 1 | Purchase Order 933, Date 2007-04-12 | 25 |
| 2 | Purchase Order 934, Date 2007-05-12 | 9 |
| 3 | Purchase Order 990, Date 2007-06-12 | 1 |

8. Testing

8.1. Pass / Fail Criteria

Not Applicable

8.2. Test Data

| DespatchAdvice | |
|--|---------------------|
| - creationDateTime | 2007-07-31T11:00:00 |
| - documentStatus | ORIGINAL |
| EntityIdentification (+despatchAdviceIdentification) | |
| - uniqueCreatorIdentification | KC |
| PartyIdentification (+contentOwner) | |
| - gLN | 8812345678903 |
| PartyIdentification (+shipper) | |
| - gLN | 8812345678903 |
| PartyIdentification (+receiver) | |
| - gLN | 8712345678913 |
| PartyIdentification (+shipTo) | |
| - gLN | 8712345678921 |
| DocumentOrDocumentReference (+purchaseOrder) | |
| DocumentLineReference | |
| lineNumber | 25 |
| DocumentReference | |

| DespatchAdvice | |
|--|----------------------|
| creationDateTime | 2007-07-31T00:00:00 |
| EntityIdentification | |
| - uniqueCreatorIdentification | 933 |
| PartyIdentification (+contentOwner) | |
| - gLN | 8712345678913 |
| DespatchInformation | |
| ActualShipping | |
| - actualShipDateTime | 2007-07-04T15:00:00 |
| DespatchAdviceLogisticUnitLineItem *1 | |
| - packageType | PE (pallet, modular) |
| LogisticUnitIdentification | |
| serialShipmentContainerCode | 881234567000010112 |
| DespatchAdviceItemContainmentLineItem *1.1 | |
| - quantityContained (value, unitOfMeasure) | 700 |
| - countryOfOrigin | Costa Rica |
| Item Containment | |
| - lineItemNumber | 1 |
| TradeItemIdentification (+containedItemIdentification) | |
| - gTIN | 08712345678906 |
| DetailLevelReference (+deliveryNote) | |
| - lineItemNumber | 001 |
| Reference | |
| - referenceDateTime | 2007-04-24T09:00:00 |
| - referenceIdentification | DN |

9. Appendices

Not Applicable

10. Summary of Changes

| Change | BSD Version | Associated CR Number |
|--|-------------|----------------------|
| DespatchAdvice → DocumentReference: <ul style="list-style-type: none"> ■ Changed role name orderReference into purchaseOrder ■ Changed role name purchaseConditionReference into purchaseConditions | 0.2.2 | |
| <ul style="list-style-type: none"> ■ Change to data types for measurementUnitCodeList in class diagrams ■ Change of cardinality of carrier to 0..1 as per requirements in Dispatch Advice Class Diagram and GDD Report. | 2.2.2 | |
| Change to class diagram and GDD. Class: DespatchAdviceItemContainmentLineItem added attributes <ul style="list-style-type: none"> ■ countryOfLastProcessing[0..1]:ISO3166_1Code ■ countryOfOrigin[0..1]:ISO3166_1Code Class: DespatchAdviceItemContainmentLineItem added association to LocationInformation <ul style="list-style-type: none"> ■ +locationOfLastProcessing[0..1] ■ +locationOfOrigin[0..1] GDD Added Related Requirements in the GDD. Defined missing definitions in the GDD. specification | 3.0.0 | 07-000103 |
| Code Lists Defined missing code values for ChangeReasonCodeList Defined missing code values for TransportationMethodTypeCodeList <ul style="list-style-type: none"> ■ Replaced POOLED_PIGGYPACK code value with POOLED_PIGGYBACK. | | |
| Class Diagram Remove DespatchAdvice association to DocumentReference. And replace with DespatchAdvice association to DocumentOrDocumentLineReference. <ul style="list-style-type: none"> ■ purchaseOrder ■ purchaseConditions This provides the ability to reference purchase order and purchase conditions to the referenced line item in the despatch advice header level. | 3.1.0 | 07-000271 |
| Updated based on Peer Review 9601 Applied template fonts and headers. | 3.1.1 | None |
| Public Review | 3.1.2 | None |
| eCom BRG eBallot Approved Update BMS to Approved | 3.1.3 | None |