



Business Message Standard (BMS) Despatch Advice

BMS Release: 2.5.0, BRG Name: eCom

Issue 4.1.0, 06-Feb-2009



Document Summary

Document Item	Current Value
Document Title	Business Message Standard (BMS)
BMS Name	Despatch Advice
BMS Release	2.5.0
BRG Name	eCom
Document Number	Issue 4.1.0
Date Last Modified	06-Feb-2009
Status	Approved
Owner	eCom BRG
BMS Template Version	1.9

Change Request Reference

Date of CR Submission to GSMP:	CR Submitter(s):	Refer to Change Request (CR) Number(s):
20 – Aug- 2008	John Ryu, GS1	08-000209
14- Mar- 2008	Troy Denyer, GS1 Australia	08-000054
29 – Feb- 2008	Esther Peelen, GS1 Netherlands	08-000039
16- Nov - 2007	Eric Maree, Accenture	07-000426
03 – Jul – 2007	John RYU, GS1 Global Office	07-000271
21 – Mar – 2007	Stef SPAAN, GS1 Netherlands	07-000103
30 – Nov- 2004	GS1	04-000224
09 – Oct- 2004	GS1 France	04-000178

Business Requirements Document (BRAD) Reference

BRAD Title:	BRAD Date:	BRAD Version
BRAD Despatch Advice Country of Processing and Origin	20070606	0.0.4
BRD Despatch Advice – Business Requirement Document	20041111	1.0.9.3
BRAD Upstream Standards – Despatch, Receipt and Consumption	20041129	0.1.1
BRD Exchange Traceability and Processing History Data of Beef Products (Slaughter to Retail)	20051102	2.50

Document Change History

Date of Change	Version	Changed By	Reason for Change	Summary of Change	Model Build #
31 – Dec-2004	2.0.0	Rob Toole		Completed BSD by adding GDD information and updated class diagram	Not Applicable
01- Mar – 2005	2.1.1	Coen Janssen	UIM + ebMeat		Not Applicable
04 – Mar-2005	2.1.2	Coen Janssen	Review comments DTG and IRT	Several changes to chapter 7. Included example in chapter 8.	Not Applicable
25- Mar-2005	2.1.3	Coen Janssen	Review comments DTG	Several changes to chapters 7 and 8.	Not Applicable
21 – Apr-2005	2.2.0	Coen Janssen	Public review comments including comments made in Vienna meeting.	Changed role names in use cases: Ship To → Receiver, Ship From → Shipper Functional changes: see chapter 12	Not Applicable
02 – May-2005	2.2.1	John Ryu	Incorporated Peer Review (6699) model changes Textual and GDD updated still needed based on peer review (6699)	Replaced class diagram in chapter 7.2 Alphabetized attributes per Modelling Best Practices. Aesthetic changes to model.	Model P4CL: 6718 BSD P4CL: 6720
31 –May-2005	2.2.1	John Ryu	Peer Review		
17- Jun-2005	2.2.2	Eric Kauz	Change to data types for measurementUnitCodeList Change of cardinality of carrier to 0..1 as per requirements.		
21-Jul-2005	2.2.3	Coen Janssen	Technical Design Public Review	Several cosmetic changes. Fixed references to requirements in paragraph 1.5.1.	
27-Jun-2007	3.0.0	John Ryu	Initial Creation for BMS Release Version 2.4 Based on eCom BRG Teleconference 20070620	Changes noted in Summary of changes	BSD P4CL: MDL P4CL: 9570
03-Jul-2007	3.1.0	John Ryu	Based on eCom BRG 20070703 Received motion for TSD Development and Peer Review.	Changes noted in Summary of changes	BSD p4CL: 9587 MDL P4CL: 9586

Date of Change	Version	Changed By	Reason for Change	Summary of Change	Model Build #
06-Jul-2007	3.1.1	John Ryu	Errata changes Based on peer review	Changes noted in Summary of changes	BSD P4CL: 9661
24-Aug-2007	3.1.2	John Ryu	Public Review	Public Review	BSD P4CL: 9806
25-Sep-2007	3.1.3	John Ryu	eCom BRG eBallot Approved	Update BMS to approved	BSD P4CL: 10006
29-Aug-2008	4.0.0	John Ryu	BMS Release 2.5.0	Noted in summary of changes	Not Applicable
1-Dec-2008	4.1.0	John Ryu	BMS Release 2.5.0 Final public Review	Noted in summary of changes	Not Applicable
6-Feb-2009	Issue4.1.0	John Ryu	BMS Release 2.5.0 eBallot Approved	Noted in summary of changes	Not Applicable

Disclaimer

Whilst every effort has been made to ensure that the guidelines to use the GS1 standards contained in the document are correct, GS1 and any other party involved in the creation of the document HEREBY STATE that the document is provided without warranty, either expressed or implied, of accuracy or fitness for purpose, AND HEREBY DISCLAIM any liability, direct or indirect, for damages or loss relating to the use of the document. The document may be modified, subject to developments in technology, changes to the standards, or new legal requirements. Several products and company names mentioned herein may be trademarks and/or registered trademarks of their respective companies.

Table of Contents

1. Business Domain View	6
1.1. Problem Statement / Business Need	6
1.2. Objective.....	6
1.3. Audience.....	6
1.4. References	6
1.5. Acknowledgements	7
1.5.1. BRG.....	7
1.5.2. Design Team Members	10
2. Business Context	10
3. Additional Technical Requirements Analysis.....	10
3.1. Technical Requirements.....	11
4. Business Transaction View	11
4.1. Business Transaction Generate Despatch Advice Use Case Diagram	11
4.1.1. Use Case Description.....	11
4.1.2. Business Transaction Activity Diagram.....	12
4.1.3. Business Transaction Sequence Diagram.....	13
4.2. Business Transaction Dispatch Notification Use Case Diagram	13
4.2.1. Use Case Description.....	13
5. Information Model (Including GDD Report)	15
5.1. GDD Despatch Advice	15
5.2. Class Diagram.....	26
5.3. Code Lists.....	27
6. Business Document Example	27
7. Implementation Considerations.....	28
8. Testing.....	28
8.1. Pass / Fail Criteria	28
8.2. Test Data	28
9. Appendices	30
10. Summary of Changes.....	30

1. Business Domain View

1.1. Problem Statement / Business Need

Generally, the Despatch Advice enables one Shipper to provide information about the content of a shipment to one Receiver. Specifically, the Despatch Advice serves as a link to a prior agreement between Shipper and Receiver and is applicable to one or many Receiver destination points from one Shipper launch point. Furthermore, the Despatch Advice may be used to indicate the despatch of goods being returned by the Receiver. The Despatch Advice may be utilized downstream between retailers, suppliers, 3PLs, carriers and manufacturers as well as upstream between manufacturers, 3PLs and material suppliers.

1.2. Objective

The objective of the Despatch Advice is:

- To facilitate the receipt of goods
- To make the despatch advice applicable to a replenishment scenario where there is no link to an order but to a contract or other kind of agreement.
- To make the despatch advice applicable to multiple destination points
- To provide more detailed information about the shipment as well as the content of a shipment from a shipper and if applicable the shipper's warehouse to the receiver and his warehouse
- To make the despatch advice applicable for the despatch of goods being returned

1.3. Audience

Retailers, manufacturers, warehouses, material suppliers, carriers and any other third party such as a logistic service or 3PL provider involved in the despatch and receipt of goods.

1.4. References

Reference #	Reference Name	Description
[Ref 1]	BRD Exchange Traceability and Processing History Data of Beef Products (Slaughter to Retail) Version 2.50	
[Ref 2]	BRAD Upstream Standards – Despatch, Receipt & Consumption Version 0.1.1	
[Ref3]	BRD Despatch Advice Version 1.0.9.3	
[Ref4]	BMS Common Library Release Version 2.1	The documented design of components that are used in multiple messages.
[Ref 5]	BRAD Despatch Advice Country of Processing and Origin Version 4	Details the country of processing and origin requirements.
[Ref 6]	BMS Common Library Release Version 2.4	The documented design of components that are used in multiple messages.
[Ref 7]	BMS Common Library Release Version 2.5.0	The documented design of components that are used in multiple messages.

1.5. Acknowledgements

1.5.1. BRG

First Name	Last Name	Company
Ryohei	Ariga	Procter & Gamble Co. (Japan)
Alison	Bartlet	Commport Communications Int'l Inc.
Lorraine	Bartrop	Whitbread Group, PLC
Martin	Beno	GS1 Slovakia
Mike	Blank	3663 First for Foodservice
Kyra	Blankenstein	GS1 Netherlands
Zsolt	Bócsi	GS1 Hungary
Shaun	Bosson	GS1 New Zealand
Dave	Botherway	Melbourne PC User Group
Miriam	Burke	Procter & Gamble Co.
Jean-Luc	Champion	GS1 Global Office
Richard	Chresta	GS1 Switzerland
Fatou	COULIBALY	GS1 France
Troy	Denyer	GS1 Australia
Arne	Dicks	GS1 Germany
Marilyn	Dodd	3M Company
Sue	Donarski	Schneider National
John	Duker	Procter & Gamble Co.
Karina	Duvinger	GS1 Sweden
Carol	Edison	General Mills, Inc.
Hussam	El-Leithy	RosettaNet
Chris	Emment	Brakes Food Service
Karen	Feiling	GS1 South Africa
Brian	Finale	UPS
Klaus	Foerderer	GS1 Germany
David	Freedman	Inovis Inc. (US)
Wayne	Gingerich	Werner Enterprises
Joel	Goldberg	Rosenthal & Rosenthal, Inc.
Sara	Halfmann	Best Buy Co., Inc.
Bill	Hamilton	Kavi
John	Hervey	NACS/PCATS

First Name	Last Name	Company
Douglas	Hill	GS1 Denmark
Rob	Hoffman	Hershey Company (The)
Norbert	Horst	GS1 Germany
Sandra	Hurd	CIT Group (The)
Mark	Ingram	Anheuser Busch
Coen	Janssen	GS1 Netherlands
Jim	Jennings	Procter & Gamble Co.
Tan	Jin Soon	GS1 Singapore
Fred	Kempkes	Unilever N.V.
Brendan	Kernan	GS1 Ireland
Atsushi	Koizumi	Ajinomoto Co., Inc.
Vladimir	Kozovic	GS1 Serbia
Anne-Claire	Krid	GS1 France
Carolyn	Kroll	1SYNC
Frank	Kuhlmann	GS1 Germany
Priya	Kunthasami	GS1 New Zealand
CHRISTIAN	LAPORTE	GAZ DE FRANCE
Rita	Laur	GS1 Canada
Sophie	Le Pallec	GS1 France
Guillaume	Lecomte	Firmenich
Sean	Lockhead	GS1 Global Office
Bill	Lohse	Data-Tronics Corporation
Ana Paula	Maniero	GS1 Brasil
Eric	Maree	Accenture Supply Chain Services
Michal	Martinko	Hewlett-Packard
Robert	McHugh	Menlo Worldwide
John	Meier	Giant Food Stores, Inc.
Jeff	Melcher	Army & Air Force Exchange Service
Juan	Mengide	GS1 Argentina
Cyndi	Metallo	Gladson Interactive
Carol	Miklusak	1SYNC
James	Morrison	Whirlpool Corporation
Dana	Morton	FedEx
Hirokazu	Nagai	Japan Pallet Rental Corporation

First Name	Last Name	Company
Frank	Napoli	LMI
Corinne	Narbaïts-Jauréguy	GS1 France
Eileen	Naused	McCormick & Company, Inc.
Debra	Noyes	Johnsonville Sausage, Inc
Hideaki	Ohata	Nomura Research Institute, Ltd
Mike	Osiecki	Best Buy Co., Inc.
Phil	Oxley	Compass Group, UK and Ireland Ltd
Ju Young	Park	GS1 Korea
Esther	Peelen	GS1 Netherlands
Steven	Pereira	GS1 Australia
Uxio	Perez Rodriguez	TLR Soft
Marie	Perry	Coca-Cola Enterprises
Leon	Plaksin	GS1 Australia
Valerie	Post	Link Snacks Inc, Jack Links Beef Jerky
Natascha	Pottier	GS1 France
Joerg	Pretzel	GS1 Germany
Glenn	Pride	1SYNC
Rich	Richardson	GS1 US
Steven	Robba	Johnson & Johnson
Pere	Rosell	GS1 Spain
Steven	Rosenberg	GS1 US
Steve	Rowland	GS1 New Zealand
John	Ryu	GS1 Global Office
Hugo	Sabogal	GS1 Colombia
Tracy	Satcho	Eaton Electrical
Akikazu	Sato	Kao Corporation
Sue	Schmid	GS1 Australia
Christian	Schneider	GS1 Switzerland
Jon	Sharratt	Target Corporation
Jeanne	Shavlik-Bork	Kimberly-Clark Corporation
Mary	Shaw	IDEA (Canada)
Emilie	SION	GS1 France
Matthew	Smith	Bunnings Group Limited
Gabriel	Sobrino	GS1 Netherlands

First Name	Last Name	Company
Stef	Spaan	GS1 Netherlands
Roman	Strand	GS1 Germany
Gina	Tomassi	PepsiCo
Dale	Turner	MediaLibrary Pty Ltd
Monica	Van Haren	Mars, Inc.
Krisztina	Vatai	GS1 Hungary
Claude	Viman	Johnson & Johnson
Akihiro	Watanabe	Izumiya Co., LTD
Shan	Welch	GS1 UK
Jan	Westerkamp	GS1 Netherlands
Bekki	Windsperger	Best Buy Co., Inc.
Chi-Wei	Yang	UPS
Marc	Yarbrough	Cadbury plc - North America
Greg	Zwanziger	SUPERVALU

1.5.2. Design Team Members

Function	Name	Organisation
Modeler	John Ryu	GS1
XML Technical Designer	Dipan Anarkat	GS1
EANCOM Technical Designer	Not Applicable	
Peer Reviewer	Brian Bennett	GS1

2. Business Context

Context Category	Value(s)
Industry	All
Geopolitical	Global
Product	All
Process	Deliver
System Capabilities	GS1 System
Official Constraints	None

3. Additional Technical Requirements Analysis

Not Applicable

3.1. Technical Requirements

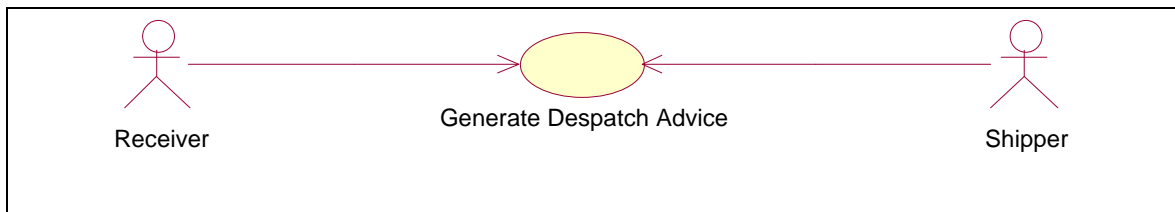
Not Applicable

4. Business Transaction View

4.1. Business Transaction Generate Despatch Advice Use Case Diagram

The Despatch Advice must contain certain information, in line item format, to convey comparative information to the Receiver. The Despatch Advice therefore will provide for the identification of the individual lines within the Despatch Advice by line sequence number. The Despatch Advice may provide for a reference to other related documents, such as the Order, Delivery Note and Consignment. The Despatch Advice may also include a reference to a contract and may include the line sequence numbers from the documents Order, Delivery Note, Consignment and Contract

Figure 4-1 Use Case Generate Despatch Advice



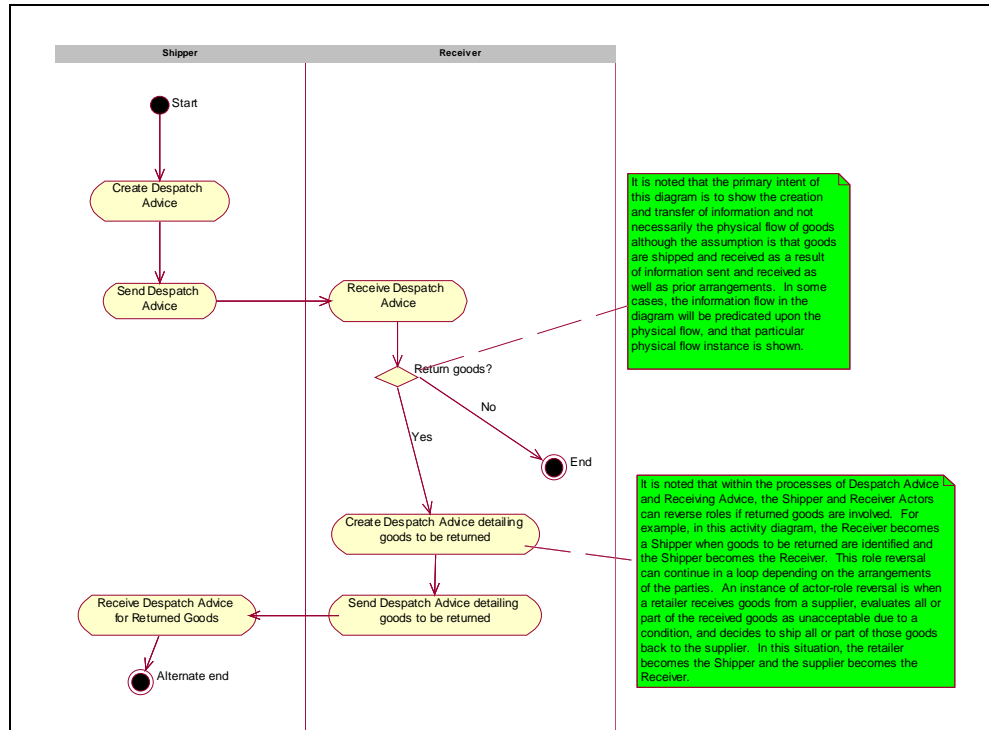
4.1.1. Use Case Description

Use Case ID	GDA										
Use Case Name	Generate Despatch Advice										
Use Case Description	Describes a complete process whereby a Shipper generates a Despatch Advice based on information about the order and the product.										
Actors (Goal)	Receiver and Shipper										
Performance Goals	None										
Preconditions	Master data alignment of locations (GLNs) and products (GTINs).										
Post conditions	Check of the received physical goods with the information of the Despatch Advice and the check of the state of the goods themselves.										
Scenario	<p>Begins when... The Receiver receives a shipment of goods accompanied or preceded by the Despatch Advice or Shipping Documents.</p> <p>Continues with...</p> <table border="1"> <thead> <tr> <th>Step #</th> <th>Actor</th> <th>Activity Step</th> </tr> </thead> <tbody> <tr> <td>1</td> <td>Shipper</td> <td>Shipper issues the Despatch Advice containing the information of the actual physical shipment.</td> </tr> <tr> <td>2</td> <td>Receiver</td> <td>Receiver receives Despatch Advice.</td> </tr> </tbody> </table> <p>Ends when... If necessary, Receiver creates and sends Despatch Advice to Shipper indicating returned goods. *See role reversal note in activity and sequence diagrams.</p>		Step #	Actor	Activity Step	1	Shipper	Shipper issues the Despatch Advice containing the information of the actual physical shipment.	2	Receiver	Receiver receives Despatch Advice.
Step #	Actor	Activity Step									
1	Shipper	Shipper issues the Despatch Advice containing the information of the actual physical shipment.									
2	Receiver	Receiver receives Despatch Advice.									

Alternative Scenario	Not Applicable
Related Requirements	Not Applicable
Related Rules	Not Applicable

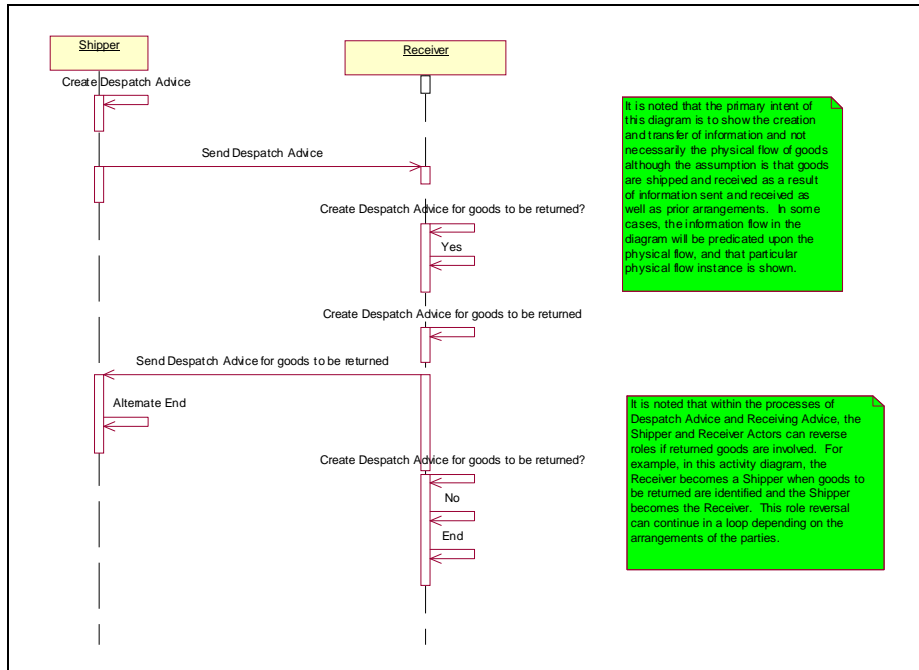
4.1.2. Business Transaction Activity Diagram

Figure 4-2 Activity Diagram Generate Despatch Advice



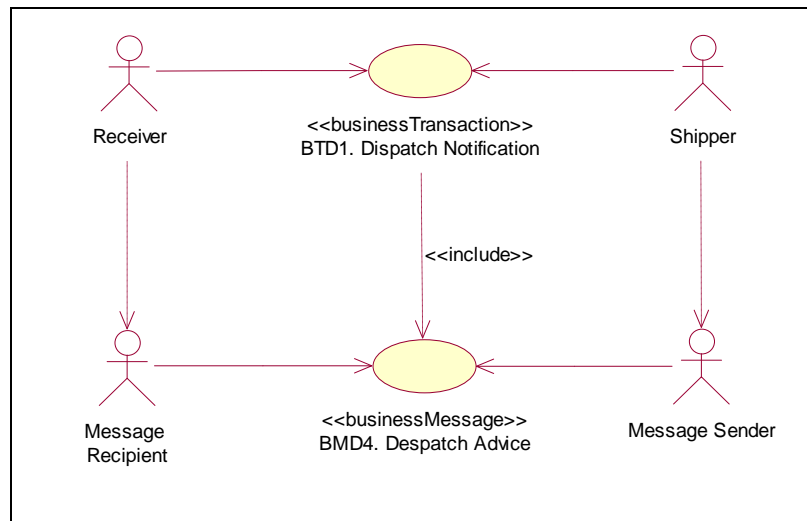
4.1.3. Business Transaction Sequence Diagram

Figure 4-3 Sequence Diagram Generate Despatch Advice



4.2. Business Transaction Dispatch Notification Use Case Diagram

Figure 4-4 Business Transaction Dispatch Notification



4.2.1. Use Case Description

Use Case ID	BTD1
Use Case Name	Dispatch Notification
Use Case Description	The Dispatch Notification enables the supplier / carrier to provide detailed information about the content of a shipment and enables a buyer to reconcile or confirm the physical

	<p>shipment against the order; it provides a mirror of the shipment that is to be made in terms of package details and in terms of structure of the delivery.</p> <p>The Dispatch Notification is sent by the Ship From party to the Ship To party when the goods are sent - goods being sent being considered as in transit.</p>						
Actors (Goal)	<p>Shipper: To notify the receiver in advance of the contents of a shipment.</p> <p>Receiver: To be informed in advance about the contents of a shipment.</p>						
Performance Goals	The information must be received prior to the arrival of the actual shipment.						
Preconditions	Dispatch Notification to be sent						
Post conditions	Dispatch Notification received						
Scenario	<p>Begins when:</p> <p>After the shipment has been picked, packed, labelled and loaded in order to guarantee that the information sent is correct.</p> <p>Continues with:</p> <table border="1" data-bbox="560 667 1474 783"> <thead> <tr> <th>Step #</th> <th>Actor</th> <th>Activity Step</th> </tr> </thead> <tbody> <tr> <td>1.</td> <td>Ship From</td> <td>Sends Despatch Advice to the Ship To party.</td> </tr> </tbody> </table> <p>Ends when: Ship to receives the despatch advice.</p>	Step #	Actor	Activity Step	1.	Ship From	Sends Despatch Advice to the Ship To party.
Step #	Actor	Activity Step					
1.	Ship From	Sends Despatch Advice to the Ship To party.					
Alternative Scenario	Not Applicable						
Related Requirements	Not Applicable						
Related Rules	Not Applicable						

5. Information Model (Including GDD Report)

5.1. GDD Dispatch Advice

Class (ABIE)	Attribute (BBIE)	Association (ASBIE)	Secondary Class	Official Dictionary Entry Name	Definition	Multiplicity	Data Type Components	Related Requirements	Facets
ConsignedItemWeight				Consigned Item Weight. Details	Total weight of a trade item within a consignment (across logistic units).			[BRD Exchange Traceability and Processing History Data of Beef Products (Slaughter to Retail) Version 2.50]	
			TradeItemIdentification	Consigned Item Weight. Association. Trade Item Identification	This information on TradeItemIdentification for ConsignedItemWeight.	1..1		[BRD Exchange Traceability and Processing History Data of Beef Products (Slaughter to Retail) Version 2.50]	
			UnitMeasurement	Consigned Item Weight. Association. Unit Measurement	This information on UnitMeasurement for ConsignedItemWeight.	1..*		[BRD Exchange Traceability and Processing History Data of Beef Products (Slaughter to Retail) Version 2.50]	
ConsignmentInformation				Consignment Information. Details	Information on goods that will be paid for when they are sold or consumed.			[BRD Exchange Traceability and Processing History Data of Beef Products (Slaughter to Retail) Version 2.50]	
			ConsignedItemWeight	Consignment Information. Association. Consigned Item Weight	This information on ConsignedItemWeight for ConsignmentInformation.	0..*		[BRD Exchange Traceability and Processing History Data of Beef Products (Slaughter to Retail) Version 2.50]	
			PackageInformation	Consignment Information. Association. Package Information	This information on PackageInformation for ConsignmentInformation.	1..1		[BRD Exchange Traceability and Processing History Data of Beef Products (Slaughter to Retail) Version 2.50]	

Class (ABIE)	Attribute (BBIE)	Association (ASBIE)	Secondary Class	Official Dictionary Entry Name	Definition	Multiplicity	Data Type Components	Related Requirements	Facets
		consignmentIdentification	Reference	Consignment Information. Consignment Identification. Reference	Number that identifies the consignment. (In case consignment consists of one shipment, it coincides with the shipment number).The Consignment Number, AI (401), is allocated by a freight forwarder, (or a carriers acting as a freight forwarder), or a consignor, but only if the prior agreement of the freight forwarder is given. Consignment: A logical grouping of goods (one or more physical entities) that is intended to be transported as a whole from a Shipper (Consignor) to a Receiver (Consignee) by a carrier or freight forwarder.	0..1		[BRD Exchange Traceability and Processing History Data of Beef Products (Slaughter to Retail) Version 2.50]	
			UnitMeasurement	Consignment Information. Association. Unit Measurement	This information on UnitMeasurement for ConsignmentInformation.	0..*		[BRD Exchange Traceability and Processing History Data of Beef Products (Slaughter to Retail) Version 2.50]	
Delivery AndTransportInformation				Delivery And Transport Information. Details	Information with regards to the transportation and delivery of goods.			BRD Exchange Traceability and Processing History Data of Beef Products (Slaughter to Retail) Version 2.50	
	additionalDeliveryOrTransportTerms			Delivery And Transport Information.Additional Delivery Or Transport Terms.Language_Text	Delivery of Transport Terms Location is used in conjunction with Delivery of Transport Terms Incoterm. The Delivery of Transport Terms Location is a free text field to represent the location where the delivery of transport terms apply	0..1	Language. Identifier Language. Locale. Identifier Text. Content	CR 7-426 Requirements Queue	Unbounded

Class (ABIE)	Attribute (BBIE)	Association (ASBIE)	Secondary Class	Official Dictionary Entry Name	Definition	Multiplicity	Data Type Components	Related Requirements	Facets
	deliveryOfTransportTerms			Delivery And Transport Information. Delivery Of Transport Terms. Incoterm_ Code	Code specifying the terms of delivery or transport.	0..1	Code. Content	[BRAD Upstream Standards – Despatch; Receipt & Consumption Version 0.1.1] {7.1.1-13}	Facets constrained by code list values
	deliveryOrTransportTerms			Delivery And Transport Information. Delivery Or Transport Terms. Incoterm_ Code	Code specifying the terms of delivery or transport.	0..1	Code. Content	[BRAD Upstream Standards – Despatch; Receipt & Consumption Version 0.1.1] {7.1.1-13}	
	licensePlate			Delivery And Transport Information. License Plate. Text	Vehicle license plate/Aircraft number identifying a means of transport.	0..1	Text. Content	[BRD Exchange Traceability and Processing History Data of Beef Products (Slaughter to Retail) Version 2.50]	Unbounded
	modeOfTransport			Delivery And Transport Information. Mode Of Transport. Transportation Method Type_ Code	Code specifying the name of a mode of transport.	0..1	Code. Content	[BRD Exchange Traceability and Processing History Data of Beef Products (Slaughter to Retail) Version 2.50]	Facets constrained by code list values
		billOfLadingNumber	Reference	Delivery And Transport Information. Bill Of Lading Number. Reference	Bill of lading: A document which evidences a contract of carriage and the taking over or loading of goods by the carrier, and by which the carrier undertakes to deliver the goods against surrender of the document.	0..1		[BRAD Upstream Standards – Despatch; Receipt & Consumption Version 0.1.1] {7.1.1-12}	

Class (ABIE)	Attribute (BBIE)	Association (ASBIE)	Secondary Class	Official Dictionary Entry Name	Definition	Multiplicity	Data Type Components	Related Requirements	Facets
DespatchAdvice				Despatch Advice. Details	The DespatchAdvice class is the data class that creates the advice message that the Shipper sends to the Receiver. This class inherits data directly from the class called document, which means it inherits the attributes contentVersion, creation-Date, documentStructureVersion and lastUpdateDate. DespatchAdvice has relationships with other classes as well, that allow the DespatchAdvice message to have meaning when sent to the Receiver. It is important to note that every class serves the root class DespatchAdvice. The classes that DespatchAdvice directly "touches" are in turn served by other classes that provide intelligence through direct and indirect relationships to the root class.			[BRAD Upstream Standards – Despatch; Receipt & Consumption Version 0.1.1]	
			ConsignmentInformation	Despatch Advice. Association. Consignment Information	This information on ConsignmentInformation for DespatchAdvice.	0..1		[BRD Exchange Traceability and Processing History Data of Beef Products (Slaughter to Retail) Version 2.50]	
			DeliveryAndTransportInformation	Despatch Advice. Association. Delivery And Transport Information	This information on DeliveryAndTransportInformation for DespatchAdvice.	0..1		[BRAD Upstream Standards – Despatch; Receipt & Consumption Version 0.1.1]{7.1.1-10; 11}	

Class (ABIE)	Attribute (BBIE)	Association (ASBIE)	Secondary Class	Official Dictionary Entry Name	Definition	Multiplicity	Data Type Components	Related Requirements	Facets
			DespatchAdviceItemContainmentLineItemDetail	Despatch Advice. Choice_Association. Despatch Advice Item Containment Line Item	This information on DespatchAdviceItemContainmentLineItem for DespatchAdvice.	1..*		[BRD Despatch Advice Version 1.0.9.3]	
			DespatchAdviceLogisticUnitLineItem	Despatch Advice. Choice_Association. Despatch Advice Logistic Unit Line Item	This information on DespatchAdviceLogisticUnitLineItem for DespatchAdvice.	1..*		[BRD Despatch Advice Version 1.0.9.3]	
			DespatchInformation	Despatch Advice. Association. Despatch Information	This information on DespatchInformation for DespatchAdvice.	1..1		[BRD Despatch Advice Version 1.0.9.3]	
			Document	Despatch Advice. Inheritance_Association. Electronic_Document	Used to specify basic information about the content of the message including version number, creation date and time.	1..1		[BRD Despatch Advice Version 1.0.9.3]	
		purchaseConditionsDocumentOrDocumentLineReference	Document Or Document Line Reference	Despatch Advice. Purchase Conditions. Document Or Document Line Reference	Provides the header or detail purchase conditions reference.	0..1		[BRD Despatch Advice Version 1.0.9.3]	
		purchaseOrderDocumentOrDocumentLineReference	Document Or Document Line Reference	Despatch Advice. Purchase Order Document Or Document Line Reference. Document Or Document Line Reference	Provides the header or detail purchase order reference.	0..1		[BRD Despatch Advice Version 1.0.9.3]	
		purchaseConditions	Document Reference	Despatch Advice. Purchase Conditions. Document Reference	Reference to the business document that describes the commercial conditions under which the goods are delivered.	0..1		[BRD Despatch Advice Version 1.0.9.3]	

Class (ABIE)	Attribute (BBIE)	Association (ASBIE)	Secondary Class	Official Dictionary Entry Name	Definition	Multiplicity	Data Type Components	Related Requirements	Facets
		purchaseOrder	Document Reference	Despatch Advice. Purchase Order. Document Reference	The identification for the order assigned by the buyer.	0..1		[BRD Despatch Advice Version 1.0.9.3]	
		despatchAdviceIdentification	EntityIdentification	Despatch Advice. Identification. Entity Identification	Unique identifier for the Despatch Advice Message.	1..1		[BRD Despatch Advice Version 1.0.9.3]	
		shipToNameAndAddresses	NameAndAddress	Despatch Advice. Ship To. Name And Address	Provides the ship to name and address detail information such as the street address, postal code.	0..1		CR 8-39	
		carrier	PartyIdentification	Despatch Advice. Carrier. Party Identification	Uniquely identifies the entity that transports the shipment.	0..1		[BRAD Upstream Standards – Despatch; Receipt & Consumption Version 0.1.1] {7.1.1-9 (opt) }	
		inventoryLocation	PartyIdentification	Despatch Advice. Inventory Location. Party Identification	Identification of the location where the goods will be or have been stored.	0..1		[BRAD Upstream Standards – Despatch; Receipt & Consumption Version 0.1.1] {7.1.1-8}	
		pickUpLocation	PartyIdentification	Despatch Advice. Pick Up Location. Party Identification	Party where goods are collected or taken over by the carrier (i.e. if other than consignor).	0..1		[BRD Despatch Advice Version 1.0.9.3]	
		receiver	PartyIdentification	Despatch Advice. Receiver. Party Identification	A party who engages in receiving goods.	1..1		[BRAD Upstream Standards – Despatch; Receipt & Consumption Version 0.1.1]{7.1.1-4}	
		shipFrom	PartyIdentification	Despatch Advice. Ship From. Party Identification	Identification of the location from where goods will be or have been shipped.	0..1		[BRAD Upstream Standards – Despatch; Receipt & Consumption Version 0.1.1]{7.1.1-7}	
		shipper	PartyIdentification	Despatch Advice. Shipper. Party Identification	A party who engages in shipping goods.	1..1		[BRAD Upstream Standards – Despatch; Receipt & Consumption Version 0.1.1]{7.1.1-5}	

Class (ABIE)	Attribute (BBIE)	Association (ASBIE)	Secondary Class	Official Dictionary Entry Name	Definition	Multiplicity	Data Type Components	Related Requirements	Facets
		shipTo	PartyIdentification	Despatch Advice. Ship To. Party Identification	Identification of the location to where goods will be or have been shipped.	1..1		[BRAD Upstream Standards – Despatch; Receipt & Consumption Version 0.1.1]{7.1.1-6}	
		contract	Reference	Despatch Advice. Contract. Reference	The specific contract referenced by the Despatch Advice.	0..1		[BRD Exchange Traceability and Processing History Data of Beef Products (Slaughter to Retail) Version 2.50]	
		declarantsCustomsIdentity	Reference	Despatch Advice. Declarants Customs Identity. Reference	Reference to the party whose posted bond or security is being declared in order to accept responsibility for a goods declaration and the applicable duties and taxes.	0..1		[BRD Exchange Traceability and Processing History Data of Beef Products (Slaughter to Retail) Version 2.50]	
		deliveryNote	Reference	Despatch Advice. Delivery Note. Entity Reference	The delivery note accompanying the despatch advice.	0..1		[BRD Exchange Traceability and Processing History Data of Beef Products (Slaughter to Retail) Version 2.50]	
		productCertification	Reference	Despatch Advice. Product Certification. Reference	Number assigned by a governing body (or their agents) to a product which certifies compliance with a standard.	0..1		[BRD Exchange Traceability and Processing History Data of Beef Products (Slaughter to Retail) Version 2.50]	
		specification	Reference	Despatch Advice. Specification. Reference	An essential technical requirement for items; materials; or services; including the procedures to be used to determine whether the requirement has been met. Specifications may also include requirements for preservation; packaging; packing; and marking.	0..1		[BRD Exchange Traceability and Processing History Data of Beef Products (Slaughter to Retail) Version 2.50]	

Class (ABIE)	Attribute (BBIE)	Association (ASBIE)	Secondary Class	Official Dictionary Entry Name	Definition	Multiplicity	Data Type Components	Related Requirements	Facets
DespatchAdviceLineItemDetail				Despatch Advice Line Item. Details	Information at the line item level contained within an item on a despatch advice.			[BRD Exchange Traceability and Processing History Data of Beef Products (Slaughter to Retail) Version 2.50] and [BRAD Upstream Standards – Despatch; Receipt & Consumption Version 0.1.1] and BRAD Despatch Advice Country of Processing and Origin Version 4	
	countryOfLastProcessing			Despatch Advice Line Item.Country Of Last Processing.ISO3166_1_Code	Indication of the country in which the trade item was processed, transformed, or proven last before its import.	0..1	Code. Content	[BRAD Despatch Advice Country of Processing and Origin Version 4] {BR1}	
	countryOfOrigin			Despatch Advice Line Item.Country Of Origin.ISO3166_1_Code	The country code in which the goods have been produced or manufactured, according to criteria laid down for the purposes of application of the Customs tariff, of quantitative restrictions, or of any other measure related to trade	0..1	Code. Content	[BRAD Despatch Advice Country of Processing and Origin Version 4] {BR2}	Constrained by Code List Values
	freeGoodsQuantity			Despatch Advice Line Item. Free Goods Quantity.	Quantity of goods which are free of charge.	0..1	Quantity. Content Quantity Unit. Code Quantity Unit. Code List Agency. Identifier	[BRD Exchange Traceability and Processing History Data of Beef Products (Slaughter to Retail) Version 2.50]	No Restrictions

Class (ABIE)	Attribute (BBIE)	Association (ASBIE)	Secondary Class	Official Dictionary Entry Name	Definition	Multiplicity	Data Type Components	Related Requirements	Facets
	quantityContained			Despatch Advice Item Containment Line Item. Quantity Contained. Quantity	The number of units shipped of the order unit or associated item. The unit of measure for the quantity is assumed to be the same as for the associated item. Thus the quantity must be specified in the same unit of measure as the item, e.g. case, each, etc...	1..1	Quantity. Content Quantity Unit. Code Quantity Unit. Code List Agency. Identifier	[BRAD Upstream Standards – Despatch; Receipt & Consumption Version 0.1.1]{7.1.1-27; 28}	No Restrictions
	requestedQuantity			Despatch Advice Item Containment Line Item. Requested Quantity. Quantity	The quantity that was ordered or planned to be delivered.	0..1	Quantity. Content Quantity Unit. Code Quantity Unit. Code List Agency. Identifier	[BRD Exchange Traceability and Processing History Data of Beef Products (Slaughter to Retail) Version 2.50]	No Restrictions
			ItemContainment	Despatch Advice Item Containment Line Item. Inheritance. Item Containment	This information on ItemContainment for DespatchAdviceItemContainmentLineItem.	1..1		[BRD Exchange Traceability and Processing History Data of Beef Products (Slaughter to Retail) Version 2.50]	
		locationOfLastProcessing	LocationInformation	Despatch Advice Item Containment Line Item. Location of Last Processing. Location Information	The name and address of the last processing location in which the trade item was processed or transformed.	0..1		[BRAD Despatch Advice Country of Processing and Origin Version 4] {BR1}	
		locationOfOrigin	LocationInformation	Despatch Advice Item Containment Line Item. Location of Origin. Location Information	The name and address of location of origin in which the goods have been produced or manufactured, according to criteria laid down for the purposes of application of the Customs tariff, of quantitative restrictions, or of any other measure related to trade.	0..1		[BRAD Despatch Advice Country of Processing and Origin Version 4] {BR2}	

Class (ABIE)	Attribute (BBIE)	Association (ASBIE)	Secondary Class	Official Dictionary Entry Name	Definition	Multiplicity	Data Type Components	Related Requirements	Facets
			QuantityVariance	Despatch Advice Item Containment Line Item. Association. Quantity Variance	This information on QuantityVariance for DespatchAdviceItemContainmentLineItem.	0..*		[BRD Exchange Traceability and Processing History Data of Beef Products (Slaughter to Retail) Version 2.50]	
DespatchAdviceLogisticUnitLineItem				Despatch Advice Logistic Unit Line Item. Details	Information on the line item contents of a single despatch unit, within the context of the despatch Advice.			[BRAD Upstream Standards – Despatch; Receipt & Consumption Version 0.1.1]	
			DespatchAdviceItemContainmentLineItemDetail	Despatch Advice Logistic Unit Line Item. Association. Despatch Advice Item Containment Line Item	This information on DespatchAdviceItemContainmentLineItem for DespatchAdviceLogisticUnitLineItem.	0..*		[BRAD Upstream Standards – Despatch; Receipt & Consumption Version 0.1.1]{7.1.1-20; 22; 23}	
			LogisticUnits	Despatch Advice Logistic Unit Line Item. Inheritance. Logistic Unit	This information on LogisticUnits for DespatchAdviceLogisticUnitLineItem.	1..1		[BRAD Upstream Standards – Despatch; Receipt & Consumption Version 0.1.1]{7.1.1-20; 22; 23}	
PackageInformation				Package Information. Details	To specify amount and type of logistic unit(s).			[BRD Exchange Traceability and Processing History Data of Beef Products (Slaughter to Retail) Version 2.50]	
	numberOfUnits			Package Information. Number Of Units. Integer_Numeric	Indicates the quantity contained within a package.	1..1	Numeric. Content	[BRD Exchange Traceability and Processing History Data of Beef Products (Slaughter to Retail) Version 2.50]	Unbounded
	packageType			Package Information. Package Type. Packaging Type_Code	Identifies the means of grouping of products within a shipment.	0..1	Code. Content	[BRD Exchange Traceability and Processing History Data of Beef Products (Slaughter to Retail) Version 2.50]	Facets constrained by code list values
QuantityVariance				Quantity Variance. Details	Information with regards to any difference between what was ordered and what is ready for or has been despatched.			[BRD Exchange Traceability and Processing History Data of Beef Products (Slaughter to Retail) Version 2.50]	

Class (ABIE)	Attribute (BBIE)	Association (ASBIE)	Secondary Class	Official Dictionary Entry Name	Definition	Multiplicity	Data Type Components	Related Requirements	Facets
	changeReason			Quantity Variance. Change Reason. Change Reason Code List_ Code	To specify the reason for a change of the quantity.	1..1	Code. Content	[BRD Exchange Traceability and Processing History Data of Beef Products (Slaughter to Retail) Version 2.50]	Facets constrained by code list values
	deliveryDateVariance			Quantity Variance. Delivery Date Variance. Date_ Date Time	Delivery Date Variance "The estimated Delivery Date for the goods that have been put on Back Order (the Variance Quantity)	0..1	Date Time. Content	CR8-54	
	varianceQuantity			Quantity Variance. Variance Quantity. Quantity	To specify any variances between what was ordered and what is ready for or has been despatched.	1..1	Quantity. Content Quantity Unit. Code Quantity Unit. Code List Agency. Identifier	[BRD Exchange Traceability and Processing History Data of Beef Products (Slaughter to Retail) Version 2.50]	No Restrictions

5.2. Class Diagram

Figure 5-1 Despatch Advice Class Diagram

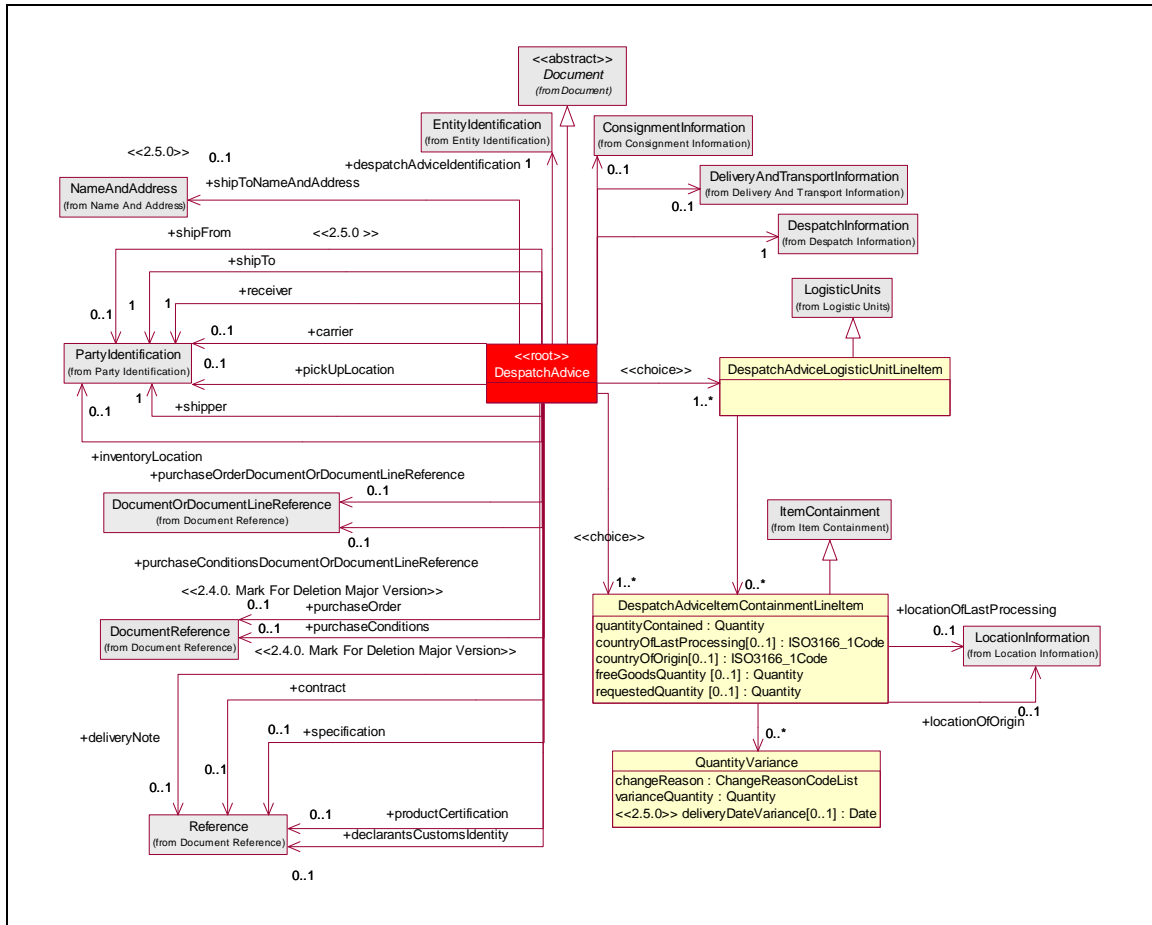


Figure 5-2 Consignment Information Class Diagram

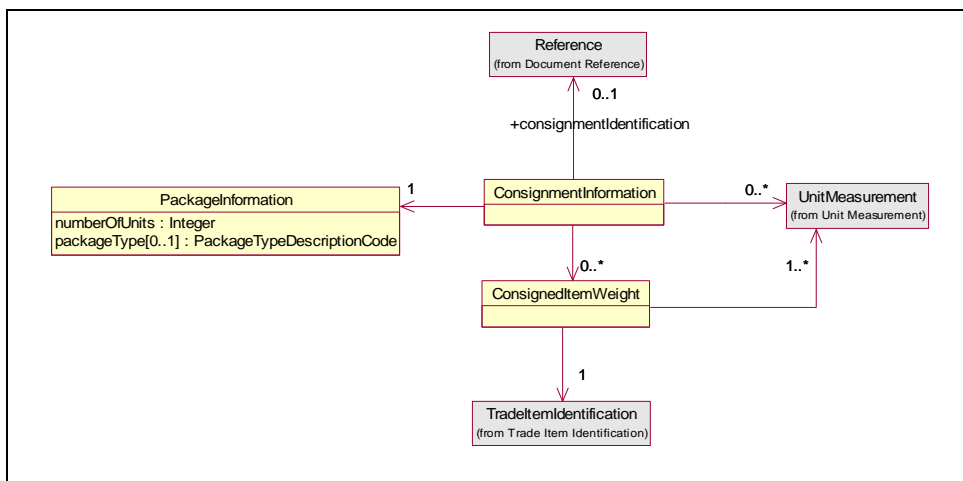
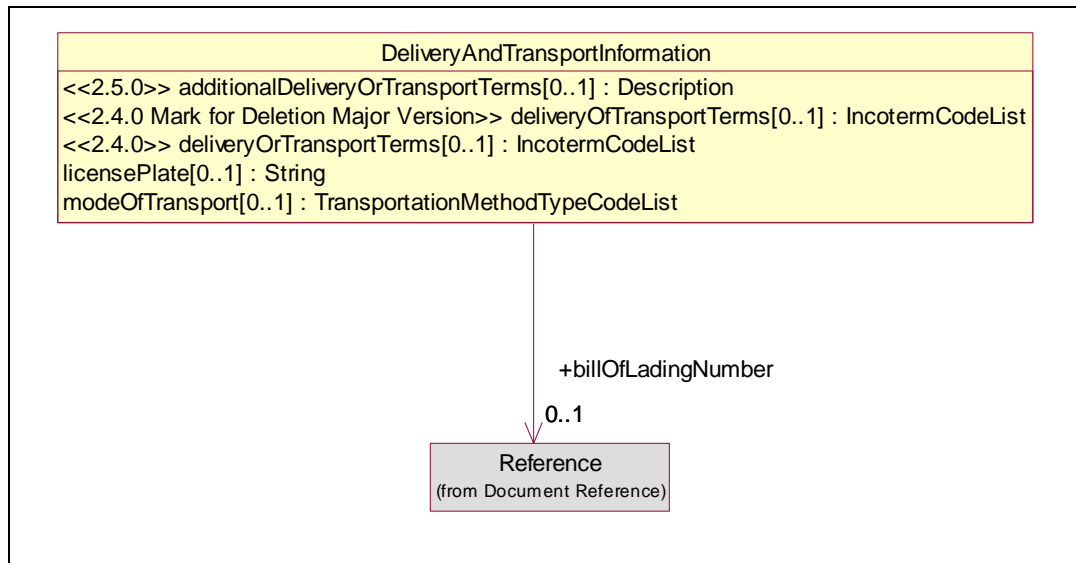


Figure 5-3 Delivery and Transport Information Class Diagram


- ✔ **Note:** Reference Common Library Business Message (BMS) Release 2.5.0 for all common information.

5.3. Code Lists

- ✔ **Note:** Reference Common Library Business Message Release 2.5.0 for all Code Lists

6. Business Document Example

The following is an example of a despatch advice message. The message is sent out on July 31, 2007 11 AM. The message is identified with the unique identifier KC.

Parties

- Material Supplier (Shipper and Content Owner 8812345678903)
- Manufacturer (Receiver 8712345678913)
- Manufacturer Ship To (8712345678921)

Referenced Purchase Order

Purchase Order 933, from Manufacturer (8712345678913) Date 2004-04-12, Line Item 25

Despatch Information

Actual Ship Date Time: July 4, 2007 300 PM

Despatch Advice Logistic Line Item

Package Type: PE (Pallet, Modular)

Logistics Unit Identification SSCC 881234567000010112

Despatch Advice Item Containment Line Item

Country of Origin: Costa Rica

Item GTIN: 08712345678906

Quantity: 700

Delivery Note References

Referenced Date Time: April 24, 2007 T 900 AM

Referenced Identification: DN

Line Item Number: 1

7. Implementation Considerations

The Despatch Advice should also include the line sequence numbers from the documents (Purchase Order and Purchase Conditions) that can be referenced to. These line sequence numbers for referenced documents are optional.

The idea behind this is that if a despatch advice refers to one order or contract or despatch note or consignment note the reference is identified at the header level and that then applies to all item lines.

If a despatch advice is referring to more than one order or contract or despatch note or consignment note then the reference is identified at the detail level through the DetailLevelReference.

Table below illustrates references.

Despatch Advice Line Number	Reference Identification and Date	Referenced Line Number
1	Purchase Order 933, Date 2007-04-12	25
2	Purchase Order 934, Date 2007-05-12	9
3	Purchase Order 990, Date 2007-06-12	1

8. Testing

8.1. Pass / Fail Criteria

Not Applicable

8.2. Test Data

DespatchAdvice	
- creationDateTime	2007-07-31T11:00:00
- documentStatus	ORIGINAL
EntityIdentification (+despatchAdviceIdentification)	
- uniqueCreatorIdentification	KC
PartyIdentification (+contentOwner)	
- gLN	8812345678903

DespatchAdvice	
PartyIdentification (+shipper)	
- gLN	8812345678903
PartyIdentification (+receiver)	
- gLN	8712345678913
PartyIdentification (+shipTo)	
- gLN	8712345678921
DocumentOrDocumentReference (+purchaseOrder)	
DocumentLineReference	
lineNumber	25
DocumentReference	
creationDateTime	2007-07-31T00:00:00
EntityIdentification	
- uniqueCreatorIdentification	933
PartyIdentification (+contentOwner)	
- gLN	8712345678913
DespatchInformation	
ActualShipping	
- actualShipDateTime	2007-07-04T15:00:00
DespatchAdviceLogisticUnitLineItem *1	
- packageType	PE (pallet, modular)
LogisticUnitIdentification	
serialShipmentContainerCode	881234567000010112
DespatchAdviceItemContainmentLineItem *1.1	
- quantityContained (value, unitOfMeasure)	700
- countryOfOrigin	Costa Rica
Item Containment	
- lineItemNumber	1
TradeItemIdentification (+containedItemIdentification)	
- gTIN	08712345678906
DetailLevelReference (+deliveryNote)	
- lineItemNumber	001
Reference	
- referenceDateTime	2007-04-24T09:00:00
- referenceIdentification	DN

9. Appendices

Not Applicable

10. Summary of Changes

Change	BSD Version	Associated CR Number
DespatchAdvice → DocumentReference: <ul style="list-style-type: none"> ■ Changed role name orderReference into purchaseOrder ■ Changed role name purchaseConditionReference into purchaseConditions 	0.2.2	
<ul style="list-style-type: none"> ■ Change to data types for measurementUnitCodeList in class diagrams ■ Change of cardinality of carrier to 0..1 as per requirements in Dispatch Advice Class Diagram and GDD Report. 	2.2.2	
Change to class diagram and GDD. Class: DespatchAdviceItemContainmentLineItem added attributes <ul style="list-style-type: none"> ■ countryOfLastProcessing[0..1]:ISO3166_1Code ■ countryOfOrigin[0..1]:ISO3166_1Code Class: DespatchAdviceItemContainmentLineItem added association to LocationInformation <ul style="list-style-type: none"> ■ +locationOfLastProcessing[0..1] ■ +locationOfOrigin[0..1] GDD Added Related Requirements in the GDD. Defined missing definitions in the GDD. specification	3.0.0	07-000103
Code Lists Defined missing code values for ChangeReasonCodeList Defined missing code values for TransportationMethodTypeCodeList <ul style="list-style-type: none"> ■ Replaced POOLED_PIGGYBACK code value with POOLED_PIGGYBACK. 		
Class Diagram Remove DespatchAdvice association to DocumentReference. And replace with DespatchAdvice association to DocumentOrDocumentLineReference. <ul style="list-style-type: none"> ■ purchaseOrder ■ purchaseConditions This provides the ability to reference purchase order and purchase conditions to the referenced line item in the despatch advice header level.	3.1.0	07-000271
Updated based on Peer Review 9601 Applied template fonts and headers.	3.1.1	None
Public Review	3.1.2	None
eCom BRG eBallot Approved Update BMS to Approved	3.1.3	None

Change	BSD Version	Associated CR Number
<p>BMS Release 2.5.0</p> <p>Change to Class Diagram and GDD</p> <p>7-426</p> <p>Class DeliveryAndTransportInformation added attribute additionalDeliveryOrTransportTerms[0..1]:Description</p> <p>8-54</p> <p>Class QuantityVariance added attribute deliveryDateVariance[0..1]:Date</p> <p>8-39</p> <p>Added Association</p> <p>DespatchAdvice+shipToNameAndAddress(0..1) to NameAndAddress</p>	4.0.0	7-426 8-54 8-39
<p>Made modification for backward compatibility correction</p> <p>TransportationMethodTypeCodeList added code value POOLED_PIGGBYPACK</p> <p>Added Association</p> <p>DespatchAdvice+purchaseOrder(0..1) to DocumentReference</p> <p>DespatchAdvice+purchaseConditions(0..1) to DocumentReference</p> <p>Renamed Association to have unique role names</p> <p>DespatchAdvice+purchaseConditionsDocumentOrDocumentLineReference(0..1) To DocumentOrDocumentLineReference</p> <p>DespatchAdvice+purchaseOrderDocumentOrDocumentLineReference(0..1) To DocumentOrDocumentLineReference</p> <p>Class: DeliveryAndTransportInformation added attribute deliveryOfTransportTerms[0..1] : IncotermCodeList</p>	4.0.0	8-209
<p>For BMS Release 2.5.0</p> <ul style="list-style-type: none"> • Prep document for public review on 01-Dec-2008 • Remove Code Lists & Add notes to reference Common Library BMS for Code Lists and Common Information. 	4.1.0	
<p>Updated BMS to Approved Status</p> <p>eBallot Approved Release 2.5.0</p>	Issue 4.1.0	