



Business Message Standard (BMS) Replenishment Request

BMS Release: 2.5.0, BRG Name: eCom

Issue 2.0.1, 06-Feb-2009



Document Summary

Document Item	Current Value
Document Title	Business Message Standard (BMS)
BMS Name	Replenishment Request
BMS Release	2.5.0
BRG Name	eCom
Document Number	Issue 2.0.1
Date Last Modified	06-Feb-2009
Status	Approved
Owner	eCom BRG
BMS Template Version	1.9

Change Request Reference

Date of CR Submission to GSMP:	CR Submitter(s):	Refer to Change Request (CR) Number(s):
20-Aug-2008	John Ryu, GS1	08-000209
27-Jul-2007	Eric Maree, Accenture	07-000309
05-Nov-2004	GS1	04-000211

Business Requirements Document (BRAD) Reference

BRAD Title:	BRD Date:	BRAD Version
BRAD Upstream Standards – Demand & Supply Signals	01-Nov-2004	0.1.0
Replenishment – Business Requirement Document	30-Mar-2004	1.0.0
BMS Common Library		BMS Release 2.5.0

Document Change History

Date of Change	Version	Changed By	Reason for Change	Summary of Change	Model Build #
31 – Dec -2004	1.0.0	Eric Kauz	Initial Version in BMS/BSD template	Migration of BRD to standard BMS/BSD format	Not Applicable
12- Jan- 2005	1.1.0	Coen Janssen	UIM project	Draft version	Not Applicable
20- Jan-2005	1.1.1	Coen Janssen	review		Not Applicable
14-Feb-2005	1.1.2	Coen Janssen	Motion to public review	Some corrections	
07- Apr-2005	1.2.0	Coen Janssen	Plan BRG February 21 – March 1 2005	Typo in paragraph 6.1.2. Functionality changes, see chapter 12.	

Date of Change	Version	Changed By	Reason for Change	Summary of Change	Model Build #
20 –May-2005	1.2.1	Coen Janssen	XML development	Chapter 7 still contained a class diagram with anticipated changes to the inventory status line, this has been removed.	
30- May-2005	1.2.2	Coen Janssen	Peer review comments	Added example to chapter 8. Fixed errors in GDD report. Corrected Use Case description. Corrected Context. Updated footer text.	
09 –Jun-2005	1.2.3	Coen Janssen	Updated GDD official names		
14- Jun-2005	1.2.4	Coen Janssen	XML development	Moved GoodsRequirementsLineItem to Common Library.	
21- Jul- .2005	1.2.5	Coen Janssen	Technical Design Public Review	Several cosmetic changes. Functional change (see paragraph 1.10)	
13.10.2005	1.2.6	John Ryu	Build Master Update	Change depicted in section 1.10	BSD P4CL: 7574 MDL P4CL: 7570
25- Apr- 2007	1.2.7	Giovanni Biffi	Editorial Changes	Minor Editorial Changes to the Document	Not Applicable
29-Aug-2008	2.0.0	John Ryu	BMS Release for 2.5.0	Refer to summary of changes	Not Applicable
01-Dec -2008	2.0.1	Lisa Herrick	BMS Release 2.5.0 Final Public Review	Noted in summary of changes	Not Applicable
06-Feb-2009	Issue 2.0.1	Lisa Herrick	BMS Release 2.5.0 eBallot Approved	Noted in summary of changes	Not Applicable

Disclaimer

Whilst every effort has been made to ensure that the guidelines to use the GS1 standards contained in the document are correct, GS1 and any other party involved in the creation of the document HEREBY STATE that the document is provided without warranty, either expressed or implied, of accuracy or fitness for purpose, AND HEREBY DISCLAIM any liability, direct or indirect, for damages or loss relating to the use of the document. The document may be modified, subject to developments in technology, changes to the standards, or new legal requirements. Several products and company names mentioned herein may be trademarks and/or registered trademarks of their respective companies.

Table of Contents

1. Business Domain View	5
1.1. Problem Statement / Business Need	5
1.2. Objective	5
1.3. Audience	5
1.4. References	5
1.5. Acknowledgements	6
1.5.1. BRG Work Group	6
1.5.2. Design Team Members	9
2. Business Context	10
3. Additional Technical Requirements Analysis	10
3.1. Technical Requirements (optional)	10
4. Business Transaction View	10
4.1. Business Transaction Use Case Diagram	10
4.2. Use Case Description	11
4.3. Business Transaction Activity Diagram(s)	11
4.4. Business Transaction Sequence Diagram(s) (optional)	11
5. Information Model (Including GDD Report)	12
5.1. GDD Report Replenishment Request	12
5.2. Class Diagrams	17
5.3. Code Lists	17
6. Business Document Example	18
7. Implementation Considerations	21
8. Testing	21
8.1. Pass / Fail Criteria	21
8.2. Test Data	21
9. Appendices	21
10. Summary of Changes	22

1. Business Domain View

1.1. Problem Statement / Business Need

The replenishment process in broader sense addresses the business practice to exchange data between a buying party (e.g. buyer) and a supplying party (e.g. seller/supplier) related to the future demand of finished or semi-finished products, ingredients, packaging and raw materials.

Between retailer and manufacturer (the downstream supply chain) the data is basically based on future demand based on finished products and time series but it can also be restricted to actual sales date for a certain period of time. Feed-back from the manufacturer on his availability to deliver is required, where available inventories (of both sides) are taken in account.

Between manufacturer and material supplier (the upstream supply chain) the data is basically based on material requirements for production and the timing for it. And also the feedback from the material supplier on his availability to deliver and the schedule for de-livery. Inventories (on both sides) are taken in account for the actual delivery schedule.

Based on the delivery schedule (replenishment proposal), a transport and shipping planning can be derived.

1.2. Objective

To supply the detail design of the (specific) business transaction needed to meet the requirements of the referenced BRAD(s) and change requests.

1.3. Audience

Anyone involved in the replenishment process with another party in the (extended) supply chain process. These parties basically are retailers, manufactures and suppliers of ingredients, packaging and raw materials. But can also be parties in between like wholesalers or logistic service providers managing warehouses.

1.4. References

Reference Name	Description
BMS Common Library Release 2.5.0	The documented design of components that are used in multiple messages.
BRAD Upstream Standards - Demand & Supply Signals 0.1.0	
Replenishment – Business Requirement Document 1.0.0	

1.5. Acknowledgements

1.5.1. BRG Work Group

First Name	Last Name	Company
Kerry	Angelo	RosettaNet
Ryohei	Ariga	Procter & Gamble Co. (Japan)
Alison	Bartlet	Commport Communications Int'l Inc.
Lorraine	Bartrop	Whitbread Group, PLC
Martin	Beno	GS1 Slovakia
Mike	Blank	3663 First for Foodservice
Kyra	Blankenstein	GS1 Netherlands
Zsolt	Bócsi	GS1 Hungary
Shaun	Bosson	GS1 New Zealand
Dave	Botherway	Melbourne PC User Group
Miriam	Burke	Procter & Gamble Co.
Jean-Luc	Champion	GS1 Global Office
Jasmine	Chew	RosettaNet
Richard	Chresta	GS1 Switzerland
Fatou	COULIBALY	GS1 France
Troy	Denyer	GS1 Australia
Arne	Dicks	GS1 Germany
Marilyn	Dodd	3M Company
Sue	Donarski	Schneider National
John	Duker	Procter & Gamble Co.
Karina	Duvinger	GS1 Sweden
Carol	Edison	General Mills, Inc.
Hussam	El-Leithy	RosettaNet
Chris	Emment	Brakes Food Service
Karen	Feiling	GS1 South Africa
Brian	Finale	UPS
Klaus	Foerderer	GS1 Germany
David	Freedman	Inovis Inc. (US)
Wayne	Gingerich	Werner Enterprises
Joel	Goldberg	Rosenthal & Rosenthal, Inc.
Anders	Grangard	GS1 Global Office

First Name	Last Name	Company
Sara	Halfmann	Best Buy Co., Inc.
Bill	Hamilton	Kavi
Tom	Heist	GS1 Global Office
John	Hervey	NACS/PCATS
Douglas	Hill	GS1 Denmark
Rob	Hoffman	Hershey Company (The)
Norbert	Horst	GS1 Germany
Sandra	Hurd	CIT Group (The)
Mark	Ingram	Anheuser Busch
Coen	Janssen	GS1 Netherlands
Jim	Jennings	Procter & Gamble Co.
Tan	Jin Soon	GS1 Singapore
Fred	Kempkes	Unilever N.V.
Brendan	Kernan	GS1 Ireland
Atsushi	Koizumi	Ajinomoto Co., Inc.
Vladimir	Kozovic	GS1 Serbia
Anne-Claire	Krid	GS1 France
Carolyn	Kroll	1SYNC
Frank	Kuhlmann	GS1 Germany
Priya	Kunthasami	GS1 New Zealand
CHRISTIAN	LAPORTE	GAZ DE FRANCE
Rita	Laur	GS1 Canada
Sophie	Le Pallec	GS1 France
Guillaume	Lecomte	Firmenich
Sean	Lockhead	GS1 Global Office
Bill	Lohse	Data-Tronics Corporation
Ana Paula	Maniero	GS1 Brasil
Eric	Maree	Accenture Supply Chain Services
Michal	Martinko	Hewlett-Packard
Robert	McHugh	Menlo Worldwide
John	Meier	Giant Food Stores, Inc.
Jeff	Melcher	Army & Air Force Exchange Service
Juan	Mengide	GS1 Argentina
Cyndi	Metallo	Gladson Interactive

First Name	Last Name	Company
Carol	Miklusak	1SYNC
James	Morrison	Whirlpool Corporation
Dana	Morton	FedEx
Hirokazu	Nagai	Japan Pallet Rental Corporation
Frank	Napoli	LMI
Corinne	Narbaïts-Jauréguy	GS1 France
Eileen	Naused	McCormick & Company, Inc.
Debra	Noyes	Johnsonville Sausage, Inc
Hideaki	Ohata	Nomura Research Institute, Ltd
Mike	Osiecki	Best Buy Co., Inc.
Phil	Oxley	Compass Group, UK and Ireland Ltd
Ju Young	Park	GS1 Korea
Esther	Peelen	GS1 Netherlands
Steven	Pereira	GS1 Australia
Uxio	Perez Rodriguez	TLR Soft
Marie	Perry	Coca-Cola Enterprises
Joao	Picoito	GS1 Portugal
Leon	Plaksin	GS1 Australia
Laurie	Policastro	GS1 Community Room Staff
Valerie	Post	Link Snacks Inc, Jack Links Beef Jerky
Natascha	Pottier	GS1 France
Joerg	Pretzel	GS1 Germany
Glenn	Pride	1SYNC
Rich	Richardson	GS1 US
Steven	Robba	Johnson & Johnson
Pere	Rosell	GS1 Spain
Steven	Rosenberg	GS1 US
Steve	Rowland	GS1 New Zealand
John	Ryu	GS1 Global Office
Hugo	Sabogal	GS1 Colombia
Tracy	Satcho	Eaton Electrical
Akikazu	Sato	Kao Corporation
Kazuya	Sato	GS1 Japan

First Name	Last Name	Company
Sue	Schmid	GS1 Australia
Christian	Schneider	GS1 Switzerland
Jon	Sharratt	Target Corporation
Jeanne	Shavlik-Bork	Kimberly-Clark Corporation
Mary	Shaw	IDEA (Canada)
Emilie	SION	GS1 France
Matthew	Smith	Bunnings Group Limited
Gabriel	Sobrino	GS1 Netherlands
Stef	Spaan	GS1 Netherlands
Roman	Strand	GS1 Germany
Gina	Tomassi	PepsiCo
Dale	Turner	MediaLibrary Pty Ltd
Monica	Van Haren	Mars, Inc.
Krisztina	Vatai	GS1 Hungary
Philippe	Vervaet	GS1 Global Office
Claude	Viman	Johnson & Johnson
Akihiro	Watanabe	Izumiya Co., LTD
Sylvia	Webb	GEFEG US
Shan	Welch	GS1 UK
Jan	Westerkamp	GS1 Netherlands
Mary	Wilson	GS1 US
Bekki	Windsperger	Best Buy Co., Inc.
Chi-Wei	Yang	UPS
Marc	Yarbrough	Cadbury plc - North America
Greg	Zwanziger	SUPERVALU

1.5.2. Design Team Members

Function	Name	Organisation
Modeller	John Ryu	GS1
XML Technical Designer	Dipan Anarkat	GS1
EANCOM Technical Designer	Not Applicable	
Peer Reviewer	Eric Kauz	GS1

2. Business Context

Context Category	Value(s)
Industry	All
Geopolitical	All
Product	All
Process	Plan
Official Constraints	None
Roles	Buyer, Seller
System Capabilities	EANCOM, XML

3. Additional Technical Requirements Analysis

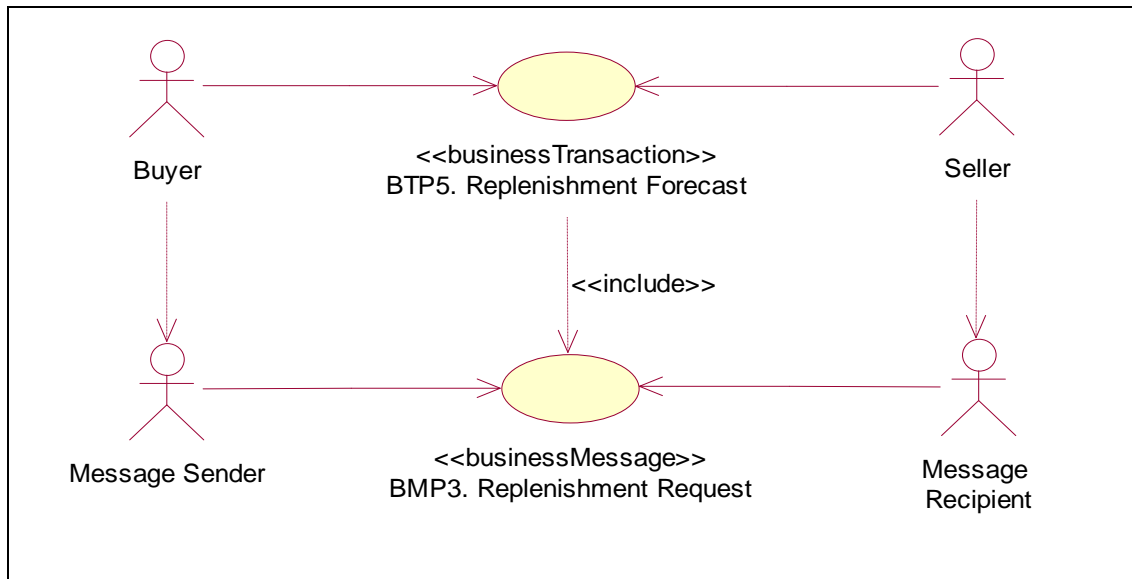
3.1. Technical Requirements (optional)

Number	Statement	Rationale
1	A bulk data message format of the replenishment request and the replenishment proposal is necessary.	

4. Business Transaction View

4.1. Business Transaction Use Case Diagram

Figure 4-1 Use Case Diagram: Business Transaction



4.2. Use Case Description

Use Case ID	BTP5										
Use Case Name	Replenishment Forecast										
Use Case Description	The Replenishment Forecast is sent by the manufacturer to the supplier and communicates at prescribed intervals the forecast for material consumption for given location(s) and/or material(s) for a specific interval as well as the inventory levels of items in these locations to enable production and replenishment planning through the supplier. The forecast figures communicated represent the gross requirements of the manufacturer.										
Actors (Goal)											
Performance Goals											
Preconditions	Gross Requirements: CALCULATED Inventory Status: CALCULATED										
Post conditions	Gross Requirements: COMMUNICATED Inventory Status: COMMUNICATED										
Scenario	<p>Begins when: Buyer has calculated his replenishment forecast.</p> <p>Continues with:</p> <table border="1"> <thead> <tr> <th>Step #</th> <th>Actor</th> <th>Activity Step</th> </tr> </thead> <tbody> <tr> <td>1.</td> <td>Buyer</td> <td>Sends Replenishment Request message to the Seller.</td> </tr> <tr> <td>2.</td> <td>Seller</td> <td>Receives Replenishment Request message</td> </tr> </tbody> </table> <p>Ends when: seller receives Replenishment Request message</p>		Step #	Actor	Activity Step	1.	Buyer	Sends Replenishment Request message to the Seller.	2.	Seller	Receives Replenishment Request message
Step #	Actor	Activity Step									
1.	Buyer	Sends Replenishment Request message to the Seller.									
2.	Seller	Receives Replenishment Request message									
Alternative Scenario	<p><i>(any alternatives to the above scenario)</i></p> <table border="1"> <thead> <tr> <th>Step #</th> <th>Actor</th> <th>Activity Step</th> </tr> </thead> <tbody> <tr> <td>1.</td> <td></td> <td></td> </tr> <tr> <td>2.</td> <td></td> <td></td> </tr> </tbody> </table>		Step #	Actor	Activity Step	1.			2.		
Step #	Actor	Activity Step									
1.											
2.											
Guidelines	<table border="1"> <tbody> <tr> <td>1.</td> <td></td> </tr> <tr> <td></td> <td></td> </tr> <tr> <td></td> <td></td> </tr> <tr> <td></td> <td></td> </tr> </tbody> </table>		1.								
1.											

4.3. Business Transaction Activity Diagram(s)

Not Applicable

4.4. Business Transaction Sequence Diagram(s) (optional)

Not Applicable

5. Information Model (Including GDD Report)

5.1. GDD Report Replenishment Request

Class (ABIE)	Attribute (BBIE)	Association (ASBIE)	Secondary Class	Official Dictionary Entry Name	Definition	Multiplicity	Data Type Components	Related Requirements	Facets
ReplenishmentCondition				Replenishment Condition. Details	Specification of type of request per period, firm committed (committed) by the buyer or just a proposal (planned). Condition:, committed, planned				
	replenishmentRequestStatus			Replenishment Condition. Replenishment Request Status. Replenishment Request Status_ Code	Contains the status of the commitment: committed or planned.	1..1	Code. Content	Replenishment – Business Requirement Document 1.0.0	Facets constrained by code list values
	replenishmentRequestType			Replenishment Condition. Replenishment Request Type. Text	Kind of requirement. Also see Replenishment Request List.	1..1	Text. Content	Replenishment – Business Requirement Document 1.0.0	Unbounded
ReplenishmentRequest				Replenishment Request. Details	Contains the material requirements and inventory status information from the buyer to the seller for given trade items and locations for specific time periods.				

Class (ABIE)	Attribute (BBIE)	Association (ASBIE)	Secondary Class	Official Dictionary Entry Name	Definition	Multiplicity	Data Type Components	Related Requirements	Facets
	replenishmentRequestDocumentType			Replenishment Request. Replenishment Request Document Type. Replenishment Request Type_ Code	Contains the type of material requirements, gross or net.	1..1	Code. Content	Replenishment – Business Requirement Document 1.0.0	Facets constrained by code list values
	structureType			Replenishment Request. Structure Type. Structure Type List_ Code	Contains the type of grouping and sequence of the business document.	1..1	Code. Content	BRAD Upstream Standards - Demand & Supply Signals 0.1.0{7.7.1-4}	Facets constrained by code list values
		materialRequirementsPlanner	Contact	Replenishment Request. Material Requirements Planner. Contact	Contains the name or ID of the person or department responsible for the planning.	0..1		BRAD Upstream Standards - Demand & Supply Signals 0.1.0{7.7.1-4}	
			Document	Replenishment Request. Generalization. Document	This information on Document for ReplenishmentRequest.	1..1		BRAD Upstream Standards - Demand & Supply Signals 0.1.0{7.7.1-2+3}	
		replenishmentRequestIdentification	EntityIdentification	Replenishment Request. Replenishment Request Identification. Entity Identification	Unique replenishment request number assigned by buying party.	1..1		BRAD Upstream Standards - Demand & Supply Signals 0.1.0{7.7.1-1}	

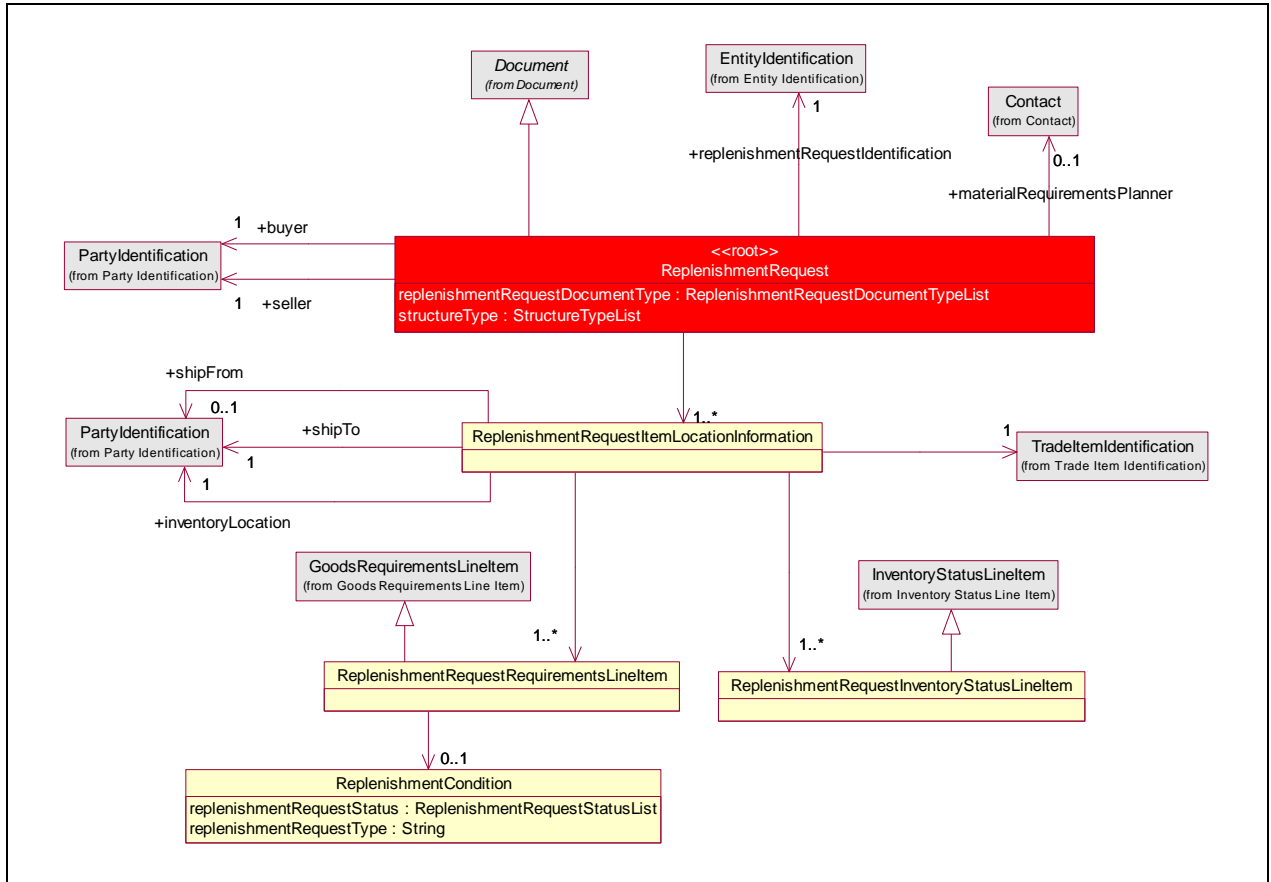
Class (ABIE)	Attribute (BBIE)	Association (ASBIE)	Secondary Class	Official Dictionary Entry Name	Definition	Multiplicity	Data Type Components	Related Requirements	Facets
		buyer	PartyIdentification	Replenishment Request. Buyer_Association. Party Identification	Contains the identification of the party that is buying the goods.	1..1		BRAD Upstream Standards - Demand & Supply Signals 0.1.0{7.7.1-4} Replenishment – Business Requirement Document 1.0.0	
		seller	PartyIdentification	Replenishment Request. Seller_Association. Party Identification	Contains the identification of the party that is selling the goods.	1..1		BRAD Upstream Standards - Demand & Supply Signals 0.1.0{7.7.1-4} Replenishment – Business Requirement Document 1.0.0	
			ReplenishmentRequestItemLocationInformation	Replenishment Request. Association. Replenishment Request Item Location Information	This information on ReplenishmentRequestItemLocationInformation for ReplenishmentRequest	1..*			
ReplenishmentRequestInventoryStatusLineItem.				Replenishment Request Inventory Status Line Item. Details	Provides the details for Replenishment Request Inventory Status Line Item.				

Class (ABIE)	Attribute (BBIE)	Association (ASBIE)	Secondary Class	Official Dictionary Entry Name	Definition	Multiplicity	Data Type Components	Related Requirements	Facets
			InventoryStatusLineItem	Replenishment Request Inventory Status Line Item. Generalization. Location_ Inventory Status Line	This information on LocationInventoryStatusInformation for ReplenishmentRequestInventoryStatusLineItem.	1..1		BRAD Upstream Standards - Demand & Supply Signals 0.1.0{7.7.1-4}	
ReplenishmentRequestItemLocationInformation				Replenishment Request Item Location Information. Details	Contains the material requirements for given trade items and locations for specific time periods.				
		inventoryLocation	PartyIdentification	Replenishment Request Item Location Information. Inventory Location. Party Identification	Identification of the physical place at the receiving side where the items are to be stored.	1..1		BRAD Upstream Standards - Demand & Supply Signals 0.1.0{7.7.1-4}	
		shipFrom	PartyIdentification	Replenishment Request Item Location Information. shipFrom_ Ship From. Party Identification	Contains the identification of the location wherefrom the required goods will be delivered.	0..1		BRAD Upstream Standards - Demand & Supply Signals 0.1.0{7.7.1-4}	
		shipTo	PartyIdentification	Replenishment Request Item Location Information. shipTo_ Ship To. Party Identification	Contains the identification of the location whereto the required goods will be delivered.	1..1		BRAD Upstream Standards - Demand & Supply Signals 0.1.0{7.7.1-4}	
			ReplenishmentRequestInventoryStatusLineItem	Replenishment Request Item Location Information. Association. Replenishment Request Inventory Status Line Item	This information on ReplenishmentRequestInventoryStatusLineItem for ReplenishmentRequestItemLocationInformation	1..*			

Class (ABIE)	Attribute (BBIE)	Association (ASBIE)	Secondary Class	Official Dictionary Entry Name	Definition	Multiplicity	Data Type Components	Related Requirements	Facets
			ReplenishmentRequestRequirementsLineItem	Replenishment Request Item Location Information. Association. Replenishment Request Requirements Line Item	This information on ReplenishmentRequestRequirementsLineItem for ReplenishmentRequestItemLocationInformation	1..*			
			TradeItemIdentification	Replenishment Request Item Location Information. Association. Trade Item Identification	Contains the identification of the item for which the replenishment request is specified.	1..1		BRAD Upstream Standards - Demand & Supply Signals 0.1.0{7.7.1-4} Replenishment – Business Requirement Document 1.0.0	
ReplenishmentRequestRequirementsLineItem				Replenishment Request Requirements Line Item. Details	Contains the required quantities per time bucket.				
			GoodsRequirementsLineItem	Replenishment Request Requirements Line Item. Generalization. Goods Requirements Line Item	This information on GoodsRequirementsLineItem for ReplenishmentRequestRequirementsLineItem	1..1			
			ReplenishmentCondition	Replenishment Request Requirements Line Item. Association. Replenishment Condition	This information on ReplenishmentCondition for ReplenishmentRequestRequirementsLineItem	0..1			

5.2. Class Diagrams

Figure 5-1 Class Diagram: Replenishment Request



- ✓ **Note:** Reference Common Library Business Message (BMS) Release 2.5.0 for all common information.

5.3. Code Lists

- ✓ **Note:** Reference Common Library Business Message Release 2.5.0 for all Code Lists

6. Business Document Example

The following is an example of a gross requirements and inventory message. The message is sent out on February 9th at 11 AM. The message is identified with the unique identifier 2005001. The content owner is the sending party, in this case the manufacturer (Buyer 8712345678913).

The gross requirements are sent by the manufacturer (Buyer 8712345678913) to the material supplier (Seller 8812345678903).

For informational purposes the manufacturer includes the name of his material requirements planner (Mr. Kramer). The gross requirements are for two delivery sites, X (Ship To 8712345670009) and Y (Ship To 8712345678951).

The gross requirements are for one item, A (GTIN 08712345678906).

For item A and delivery site X the gross requirements are:

- Week February 11-17: 1000 units, of which 500 units have already been received.
- Week February 18-25: 200 units.

The inventory for item A on site X is 100 units (available for sale) and 15 (expired).

The contract to be used for the requirements in week February 11-17 (2004000012) was issued by the business unit of the material supplier (content owner 8712345678999). Within the contract line 23 refers to this item.

For the requirements in week February 18-25 no contract has been specified.

For item A and delivery site Y the gross requirements are:

- Week February 11-17: 300 units.
- Week February 18-25: 1200 units.

The inventory for item A on site Y is 50 units (available for sale).

The contract used for the requirements in week February 11-17 (2004000012) is the same as for delivery site X.

For the requirements in week February 18-25 no contract has been specified.

ReplenishmentRequest	
- creationDateTime	2005-02-09T11.00.00
- documentStatus	ORIGINAL
- replenishmentRequestType	GROSS_REQUIREMENTS_AND_INVENTORY
- structureType	ITEM_BY_LOCATION
EntityIdentification (+replenishmentRequestIdentification)	
- uniqueCreatorIdentification	2005001
PartyIdentification (+contentOwner)	
- gLN	8712345678913
PartyIdentification (+seller)	
- gLN	8812345678903
PartyIdentification (+buyer)	

ReplenishmentRequest	
- gLN	8712345678913
Contact (+materialRequirementsPlanner)	
MultiDescription (+personOrDepartmentName)	
- description (language, text)	EN, Kramer
ReplenishmentRequestItemLocationInformation *1	
PartyIdentification (+shipTo)	
- gLN	8712345670009
TradeItemIdentification	
- gTIN	08712345678906
ReplenishmentRequestRequirementsLineItem *1.1	
- lineItemNumber	1
- timeBucketSize	WEEK
- requiredQuantity (value, unitOfMeasure)	1000
TimeOrDateTimePeriod (+requirementsPeriod)	
TimePeriod	
- startDate	2005-02-11
- endDate	2005-02-17
DocumentOrDocumentLineReference (+purchaseConditions)	
DocumentLineReference	
- lineItemNumber	23
DocumentReference	
TypedEntityIdentification	
- entityType	PURCHASE_CONDITIONS
EntityIdentification	
- uniqueCreatorIdentification	2004000012
PartyIdentification (+contentOwner)	
- gLN	8712345678999
RequiredQuantitySpecification	
- quantitySpecificationType	CUMULATIVE_QUANTITY_RECEIVED
- specificQuantity (value, unitOfMeasure)	500
ReplenishmentRequestRequirementsLineItem *1.2	
- lineItemNumber	2
- timeBucketSize	WEEK
- requiredQuantity (value, unitOfMeasure)	1200
TimeOrDateTimePeriod (+requirementsPeriod)	

ReplenishmentRequest	
TimePeriod	
- startDate	2005-02-18
- endDate	2005-02-25
ReplenishmentRequestInventoryStatusLineItem *1.3	
- lineItemNumber	3
InventoryStatusQuantitySpecification	
- inventoryStatusType	AVAILABLE_FOR_SALE
- quantityOfUnits (value, unitOfMeasure)	100
InventoryStatusQuantitySpecification	
- inventoryStatusType	EXPIRED
- quantityOfUnits (value, unitOfMeasure)	10
GoodsRequirementsItemLocationInformation *2	
PartyIdentification (+shipTo)	
- gLN	8712345678951
TradeItemIdentification	
- gTIN	08712345678906
ReplenishmentRequestRequirementsLineItem *2.1	
- lineItemNumber	4
- timeBucketSize	WEEK
- requiredQuantity (value, unitOfMeasure)	300
TimeOrDateTimePeriod (+requirementsPeriod)	
TimePeriod	
- startDate	2005-02-11
- endDate	2005-02-17
DocumentOrDocumentLineReference (+purchaseConditions)	
DocumentLineReference	
- lineItemNumber	23
DocumentReference	
TypedEntityIdentification	
- entityType	PURCHASE_CONDITIONS
EntityIdentification	
- uniqueCreatorIdentification	2004000012
PartyIdentification (+contentOwner)	
- gLN	8712345678999
ReplenishmentRequestRequirementsLineItem *2.2	
- lineItemNumber	5

ReplenishmentRequest	
- timeBucketSize	WEEK
- requiredQuantity (value, unitOfMeasure)	1200
TimeOrDateTimePeriod (+requirementsPeriod)	
TimePeriod	
- startDate	2005-02-18
- endDate	2005-02-25
ReplenishmentRequestInventoryStatusLineItem *2.1	
- lineItemNumber	6
InventoryStatusQuantitySpecification	
- inventoryStatusType	AVAILABLE_FOR_SALE
- quantityOfUnits (value, unitOfMeasure)	50

7. Implementation Considerations

Not Applicable

8. Testing

This section describes the testing criteria for business solutions.

8.1. Pass / Fail Criteria

No.	Test Criteria	Related Requirement	Design Element	Pass Criteria	Fail Criteria
1					
2					
3					

8.2. Test Data

Not Applicable

9. Appendices

Not Applicable

10. Summary of Changes

Change	BMS Version	Associated CR Number
Section 7.3: Changed code value MATERIAL_REQUIREMENTS_AND_INVENTORY into GROSS_REQUIREMENTS_AND_INVENTORY'	1.2.0	Not Applicable
GoodsRequirementsLineItem (Common Library): Association to DocumentReference (+purchaseConditions) was changed into DocumentOrDocumentLineReference (+purchaseConditions).	1.2.5	
Updated class diagram to be compliant to Modelling Best Practice. Generalized classes are above the child class. Unique ID number (P4CL: 7574) included for Configuration Management	1.2.6	
BMS updated for Release 2.5.0 Note: ReplenishmentRequestDocumentTypeList have two new code values. <ul style="list-style-type: none"> ■ MATERIAL_REQUIREMENTS ■ MATERIAL_REQUIREMENTS_AND_INVENTORY Note: In the common library Inventory Status List has been modified based on CR 07-309. Changes are noted in common library 2.5.0.	2.0.0	CR 07-000309 CR 08-000209
For BMS Release 2.5.0 <ul style="list-style-type: none"> ■ Prep document for public review on 01-Dec-2008 ■ Remove Code Lists & Add notes to reference Common Library BMS for Code Lists and Common Information. 	2.0.1	Not Applicable
For BMS Release 2.5.0 <ul style="list-style-type: none"> ■ eBallot Approved, Updated BMS to 'Approved' Status ■ Update version to 'Issue' 	Issue 2.0.1	Not Applicable